



SolarMax Pro Energy Storage Systems

How many ah does a storage battery usually have





Overview

While amperes (A) measure current flow, Ah specifically quantifies energy storage capacity. For example, a 12V lithium battery rated at 80Ah can theoretically supply 20 amps for 4 hours, 40 amps for 2 hours, or 80 amps for 1 hour under ideal conditions. How does Ah determine battery capacity & usage time?

How Ah determines battery capacity and usage time. Ampere-hour, or Ah, measures how much electricity a battery can store. It shows capacity. For example, a battery with 10 Ah can supply 10 amps for one hour or 1 amp for ten hours. This helps in understanding how long a battery will last for devices.

How much energy does a battery hold?

To calculate how much energy a battery holds in watt-hours, use: If your battery capacity is in mAh (milliamps), convert it to Ah first: You have a 12V battery rated at 100Ah. So it stores 1200 watt-hours of energy. If you're powering a 100-watt device:.

What does a higher Ah battery mean?

Essentially, amp-hours show you how long the battery will last under a specific electrical load. A higher Ah battery will be able to supply your home with power for longer. Remember that a battery's amp hour rating only tells you part of the story. To understand the full picture of battery capacity, you'll need to consider volts as well.

What is battery capacity?

Battery capacity tells you how much energy a battery can store and deliver over time. It's usually expressed in: To calculate how much energy a battery holds in watt-hours, use: If your battery capacity is in mAh (milliamps), convert it to Ah first: You have a 12V battery rated at 100Ah. So it stores 1200 watt-hours of energy.

What is a 10 Ah battery?



Ampere-hour (Ah) measures the amount of electric charge a battery can deliver over time. For example, a 10Ah battery can supply 1 ampere for 10 hours or 2 amperes for 5 hours. Ah helps predict how long a device will run before recharging, making it essential for energy planning and selection. Wholesale lithium golf cart batteries with 10-year life?

.

Does battery capacity matter?

The larger the battery's capacity (mAh or Ah), the longer the battery can power a device before it needs recharging. Just as a larger fuel tank can keep your car running longer, a higher mAh or Ah rating means the battery can supply more power. But remember, a battery's capacity isn't the only thing that matters.



How many ah does a storage battery usually have

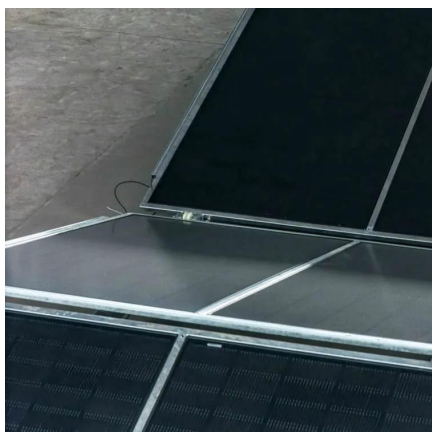


How Many Kwh Does A Car Battery Hold?

Understanding Car Battery Capacity Car batteries are typically rated in **ampere-hours (Ah)****, which represent the amount of current the battery can deliver for a specific ...

Ebike Battery Capacity Explained: Choosing the Right ...

It is usually measured in two main units: watt-hours (Wh) and ampere-hours (Ah). Watt-hours tell you how much energy a battery can store, ...



What Does Ah Mean on a Battery: Amp Hours (Ah) and Watt ...

While amperes (A) measure current flow, Ah specifically quantifies energy storage capacity. For example, a 12V lithium battery rated at 80Ah can theoretically supply 20 amps ...

How many ah is the energy storage battery , NenPower

The concept of ampere-hours (Ah) serves as a critical metric for gauging a battery's energy



storage capability. Ampere-hours quantify the total charge a battery can deliver over a ...



Understanding Battery Capacity: Ah and Voltage Explained

Most batteries list Ah and voltage on their casing or datasheet. Example: "12V 100Ah" means 12 volts output with 100 ampere-hours capacity. Labels may also indicate ...

Battery capacity explained

Amp hours (Ah) is a measure of how many amps a battery can supply for how many hours. Watt hours (Wh) is the TOTAL amount of energy that a battery can hold. Seems ...



How Many Amp Hours Do I Need for My RV (Calculate it Here)

The rating for a battery's capacity is often expressed in amp-hours (AH), which is the amount of power it can store for a certain period of time before running out.



Amp Hour rating of typical AA Alkaline batteries

Usually battery packs of this type are in series. You have 8 AA batteries, which deliver 2800 ma/h at 1.5 V each. If you connect them in ...



Battery Capacity Explained

Battery capacity, typically measured in milliampere-hours (mAh) or ampere-hours (Ah), indicates the total energy storage capacity of a battery. It largely determines your device's operation ...

Understanding Ampere-Hours (Ah) in Batteries: A Complete Guide

The capacity of a battery is often measured in ampere-hours (Ah). But what does this rating actually tell you about the battery's capacity? How many amp-hours do you need for ...



How many ah is the energy storage battery , NenPower

The concept of ampere-hours (Ah) serves as a critical metric for gauging a battery's energy storage capability. Ampere-hours quantify the total ...



Demystifying Amps: Unraveling the Power Within Your 12-Volt Battery

FAQs: Q: How can I tell how many amps my car battery has? A: Check your car's owner's manual or look for the label on the battery itself. It will usually specify the amp-hour ...



[What Does Ah Mean For A Battery? Explained Simply!](#)

Have you ever wondered what the letters "Ah" mean when looking at batteries? It might sound simple, but it holds an important secret. The "Ah" stands for ampere-hours, a key ...

How many ah does the energy storage battery use , NenPower

When considering how many ampere-hours an energy storage battery utilizes, various factors influence the appropriate Ah rating for particular situations. The specific ...



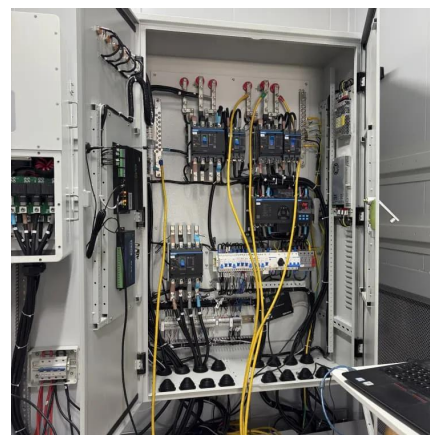


What Is Battery Storage Capacity?

Battery storage capacity is usually measured in watt-hours (Wh)/kilowatt hours (kWh) or milli-amp hours (mAh) /amp-hours (Ah). You can always compare ...

How Many Amp Hours Are in a Group 27 Battery? A ...

Short Answer: Group 27 batteries typically provide 85-110 amp hours (Ah) depending on chemistry. Flooded lead-acid versions average 90-105 Ah, AGM 95-110 Ah, ...

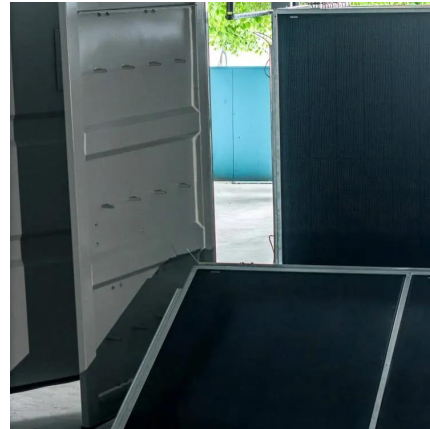


What Is Battery Storage Capacity?

Battery storage capacity is usually measured in watt-hours (Wh)/kilowatt hours (kWh) or milli-amp hours (mAh) /amp-hours (Ah). You can always compare the storage capacity of two batteries ...

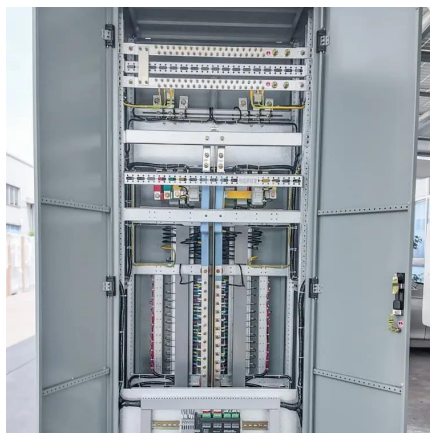
How Many Amp Hours Does a Group 27 Battery Typically Have

Capacity and Performance Group 27 Battery: Has a lower capacity, ranging from 66 Ah to 100 Ah, with a reserve capacity of 140 to 200 minutes.



[Understanding the Amp Hours in a Group 27 Battery: A ...](#)

A Group 27 battery typically provides 80-110 amp hours (Ah) of capacity, depending on its chemistry and design. These batteries are widely used in marine, RV, and ...



How to Calculate Battery Capacity (Ah, mAh, and Watt-hours)

This guide will explain what battery capacity means, how to calculate it, and how to convert between units like Ah, mAh, and Wh -- with a calculator to make it all easy.



[How Many Amps \(Amp Hours\) is a Car Battery?](#)

If you're in a pinch and don't have a marine or deep-cycle battery around, you might find yourself wondering just how many amps (amp hours) a car battery has to power something. Small car ...





What Does Ah Mean on a Battery? Understanding Battery Capacity

Learn what amp hours (Ah) mean on a battery, how they affect capacity, runtime, and applications like cars, solar systems, and electronics.



Contact Us

For catalog requests, pricing, or partnerships, please visit:
<https://bringmethehorizon.eu>