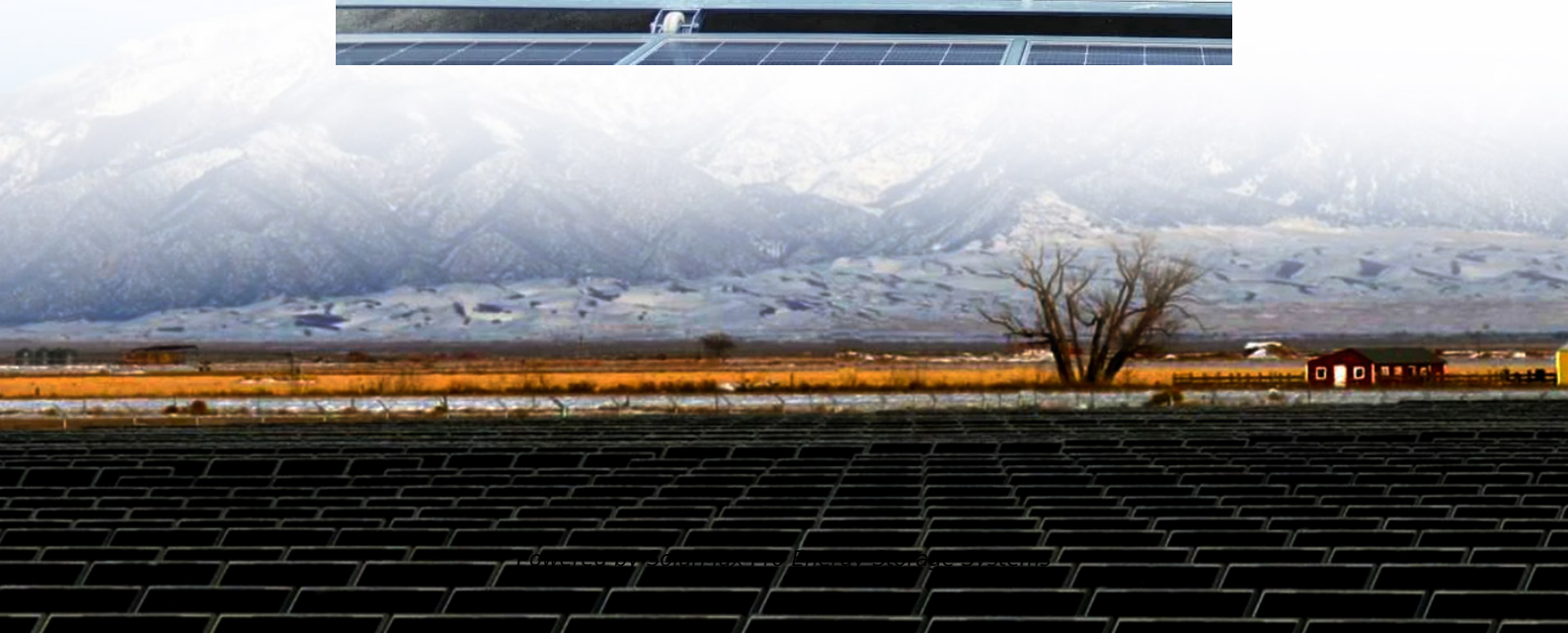




SolarMax Pro Energy Storage Systems

How is the German base station communication equipment





Overview

For communication, SIGNIT, Electronic Warfare and ELOCAT, Bundeswehr using wired and fiber optic systems, fixed and mobile radio stations and satellite communications.

The communications systems of the (Bundeswehr) include the , information systems for the of combined arms forces. It also covers military.

HF communicationThe Bundeswehr is using different HF-radio systems. Elbit System HRM-7000, SEM 93 and the.

The Bundeswehr has used a number of different means of communication since it was founded. Some of the first wireless systems were bought from the US-army. The wired field.

Head of all information-technology and electronic is the Command

What are the communication systems of the German Armed Forces (Bundeswehr)?

The communications systems of the German armed forces (Bundeswehr) include the strategic communication, information systems for the command and control of combined arms forces. It also covers military intelligence, weather forecasting, and aviation of all branches of the German armed forces.

What radio system did the Bundeswehr use?

The main System of Bundeswehr is the SEM 80/90 analog UHF radio, introduced in the early 80this and rebuild in 2021. At the Afghanistan ISAF deployment of Bundeswehr, platoons often used the US AN/PRC-117. It is a universally-used software defined radio of US Harris Corporation widely used by the US army.

How did radio equipment develop in Germany?

Development of radio equipment in Germany at first went along the same lines as in other countries. Components were mounted on wooden baseboards



and behind a front panel of Bakelite or similar material. More expensive sets featured a cabinet, also made of wood. Electrical shielding was hardly used and coils were of the open ('air cored') type.

How can a tap-proof satellite network help the German Armed Forces?

Providing stable and secure communications for the missions of the German Armed Forces (Bundeswehr) abroad is key, particularly in regions where the infrastructure for communications between deployment sites and the home base is unreliable. In these scenarios, tap-proof satellite-based networks can be deployed quickly and reliably.

How does a base station work?

It usually connects the device to other networks or devices through a dedicated high bandwidth wire of fiber optic connection. Base stations typically have a transceiver, capable of sending and receiving wireless signals; Otherwise if they only send the trailer it will be considered a transmitter or broadcast point only.

Does the Bundeswehr use BOS radio?

In addition to the police, fire brigade and rescue services, the Bundeswehr also used the digital trunked radio of the so-called "authorities and organizations with security tasks" (BOS) from 2019. The Bundestag passed a corresponding amendment to the law in April 2019. Individual branches of the Bundeswehr were already participants in BOS radio.



How is the German base station communication equipment

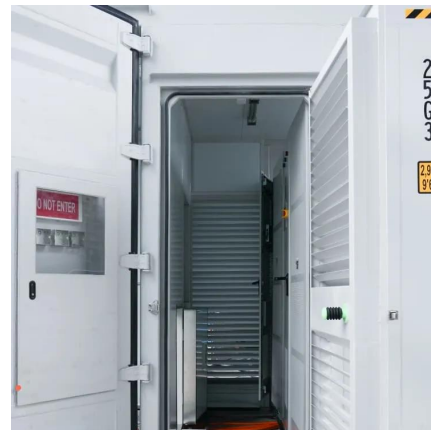


What is Base Station?

Nowadays, networking has become a crucial part of our daily lives. To implement network services for users, base station plays an essential role to constitute a complete network ...

Rohde & Schwarz supplies combat net radio for Bundeswehr

It includes various interoperable form factors, such as vehicle and handheld radios, fixed stations, backpack radios, and a tactical radio for airborne platforms.



[A Comprehensive Guide to German Military Satellite ...](#)

Explore the evolution of German military satellite communications, from strategic partnerships to cybersecurity measures, and discover the crucial role satellites play in modern ...

A Comprehensive Guide to German Military Satellite Communications

Explore the evolution of German military satellite communications, from strategic partnerships to



cybersecurity measures, and discover the crucial role satellites play in modern ...



huawei base station

Huawei Base Station Overview: A base station, also known as an eNodeB (for 4G LTE) or gNodeB (for 5G NR) in Huawei's terminology, is a piece of equipment that facilitates ...



CB and Ham Radio Base Station Components

Explore a variety of CB and Ham radio base station components for enhanced communication, including antennas, mounts, cables, and other essential ...



AIS base stations

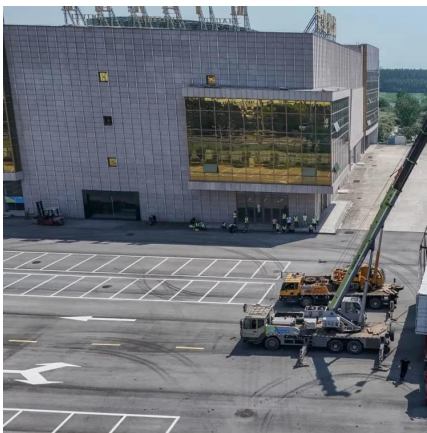
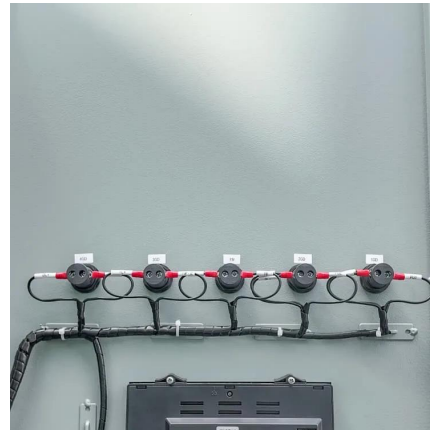
An AIS base station is an essential part of the Automatic Identification System (AIS) infrastructure, primarily used by coastal authorities and vessel traffic services (VTS) to monitor and manage ...





The Signal Corps - a Branch of the German Army

Static communication services install and operate fixed telecommunications installations and connect them to make up networks. For that purpose, the ...



Communication systems of the Bundeswehr

For communication, SIGNIT, Electronic Warfare and ELOCAT, Bundeswehr using wired and fiber optic systems, fixed and mobile radio stations and satellite communications.

Wireless Communications of the German Army in World War II

From 1936 the German forces started deploying a range of communication links using UHF frequencies to form a point-to-point mesh communication network. During the war this was ...



The Signal Corps - a Branch of the German Army

Static communication services install and operate fixed telecommunications installations and connect them to make up networks. For that purpose, the soldiers rely on a great variety of ...



Germany Communication Base Station Equipment Flex PCB ...

The Germany Communication Base Station Equipment Flex PCB market is poised for significant growth, driven by advancements in technology and a shift towards sustainable ...



[10 Best Ham Radio Base Station For Long Range ...](#)

In this article, we have described details of different Ham radio base station that will help you to select the best one based on your needs.

CHX-200

At the heart of the system is the CHX-200 RX/TX unit, which consists of a receiver with a built-in exiter. By adding an external HF power amplifier (PA), the station can be configured for short ...



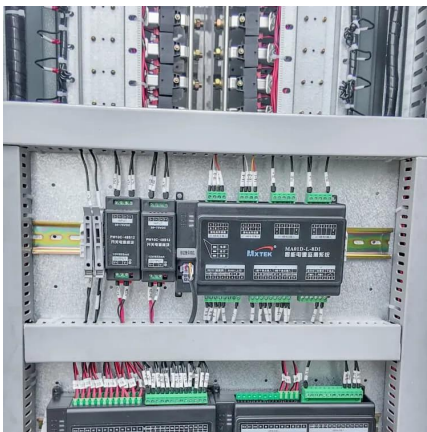


Base Stations

Backhaul Connection: The backhaul connection links the base station to the core network in the mobile communication system. It provides for the interchange of data between ...

About WWII RADIO SETS

The German air force, army and navy were trying to standardise their components as much as possible. A problem was the large number of different valves used in communications equipment.



[IoT Glossary: Base Station Controller Explained](#)

The base station is responsible for maintaining communication between the network and the users, and also among users. The equipment works with a mobile switching ...

[Rohde & Schwarz supplies combat net radio for ...](#)

It includes various interoperable form factors, such as vehicle and handheld radios, fixed stations, backpack radios, and a tactical radio for ...



German Intercept Station Operations during World War II

German Intercept Station Operations were intercept operations that were undertaken by the German Army forces in Europe during World War II. Interception is the gathering of radio ...



5G RAN Architecture: Nodes And Components

4. Base Station Base Station (BS) is a key component of the 5G Radio Access Network (RAN) architecture that serves as an access point for wireless connections between ...



The Base Station in Wireless Communications: The ...

Base station, also known as BTS (Base Transceiver Station), is a key device in wireless communication systems such as GSM. Equipped with ...





chapter 9 Flashcards , Quizlet

A (n) _____ handoff is when a cellular communication is conditionally handed off from one base station to another and the mobile equipment is simultaneously communicating with ...



What is a base station and how are 4G/5G base stations different?

Base station is a stationary trans-receiver that serves as the primary hub for connectivity of wireless device communication.

Contact Us

For catalog requests, pricing, or partnerships, please visit:
<https://bringmethehorizon.eu>