



SolarMax Pro Energy Storage Systems

How big of an inverter do I need for 100kw





Overview

Before we go any further, we highly recommend that you choose a pure sine wave inverter. This type of inverter delivers high-quality electricity, similar to your utility company. This way, none of your appliances run the risk of being damaged. Now, when it comes to sizing your inverter, you always need to check.

We have summarized the appliances that inverters from 300W to 3000W can run depending on their rated maximum power. Note to our readers: Use the above formula to determine.

In this case, you would need an inverter with a capacity of at least 750 watts to handle the load. It's important to consider both the continuous power rating and the surge power rating of the inverter. What size inverter do I Need?

Inverters come in different sizes starting from as little as 125 watts. The typical inverter sizes used for residential and commercial applications are between 1 and 10kW with 3 and 5kW sizes being the most common. With such an array of options, how do you find the right size for you?

An inverter works best when close to its capacity.

What are the different solar inverter sizes?

Solar generators range in size from small generators for short camping trips to large off-grid power systems for a boat or house. Consequently, inverter sizes vary greatly. During our research, we discovered that most inverters range in size from 300 watts up to over 3000 watts. In this article, we guide you through the different inverter sizes.

How to calculate inverter size?

Using the Inverter Size Calculator is quick and easy. You'll need three inputs: Total Wattage (W): This is the total power consumption of all the appliances or devices you plan to run through the inverter. Safety Factor: A multiplier to ensure some buffer above your actual power requirement. Typically ranges from 1.1 to 1.5.



How much power does an inverter need?

The continuous power requirement is actually 2250 but when sizing an inverter, you have to plan for the start up so the inverter can handle it. Third, you need to decide how long you want to run 2250 watts. Let's say you would like to power these items for an eight-hour period.

How to size a 1500 watt power inverter?

A rule-of-thumb for sizing your 1500-watt power inverter is to combine the wattage of all the devices you are planning to use at the same time (don't forget basic necessities, like lights) and give yourself 20% headroom.

What can a 1000 watt power inverter power?

You can use a 1000-watt power inverter to power small appliances like a microwave to some power tools that will not require more than this amount when used at the same time. They are generally used in Recreational Vehicles (RVs), campers, trucks, boats, and as a part of a small solar setup.



How big of an inverter do I need for 100kw

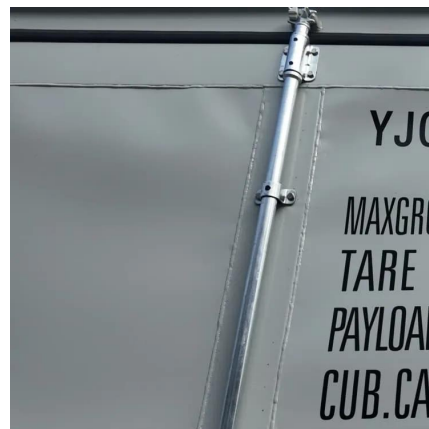


[What Size Inverter do I Need? \[with Examples\]](#)

Sizing an inverter is very simple, as long as you know how much power do you exactly need. If you think that at some point you will be plugging in more ...

Understanding the 10000W Inverter - Power, Performance, and ...

Explore the power of a 10000W inverter, learn the difference between kilowatt vs kVA, and find the best setup for your home or solar system.



[How To Size A Solar Inverter in 3 Easy Steps](#)

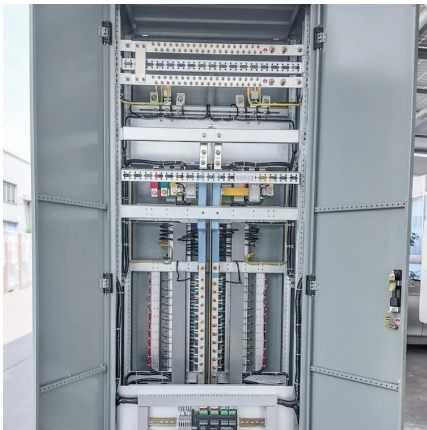
The size of the inverter you need depends on the total wattage requirements of the devices or appliances you want to power. To determine the appropriate size, you can calculate ...

Inverter Size Calculator

Inverter Size (W) = (Total Wattage × Safety Factor) ÷ Inverter Efficiency. This ensures that the inverter can handle both the load and the



efficiency losses. Let's walk through a simple ...



What Size Solar Inverter Do I Need? Experts Break It ...

What Size Solar Inverter Do I Need? A solar inverter should closely match your solar system's output in kW--typically within 80% to 120% of your ...

How to Determine the Right Inverter Sizes for Your Needs

Choosing the correct inverter sizes is crucial. Discover how to calculate your power needs, understand the consequences of improper sizing, and find the perfect VoltX inverter.



How to Choose the Right Size Solar Inverter: Step-by-Step with ...

This guide walks you through calculating inverter size based on panel capacity, power usage, and safety margins. We use real examples from installations in Texas and ...



[How To Size A Solar Inverter in 3 Easy Steps](#)

In this guide, we share 3 easy steps on how to size a solar inverter correctly. We explain the key concepts that determine solar inverter sizing including your power needs, the type and number ...



Microsoft Word

3 phase supply can take the following configurations: a. Use a 3 phase 380 Volt inverter and supply all 3 phases b. Use 3 x single phase inverters that can work together to produce 380V ...

What size inverter do I require?

We have three households on the property and I would like to find out what size inverter would be recommended to be able to handle the peak consumption during load ...



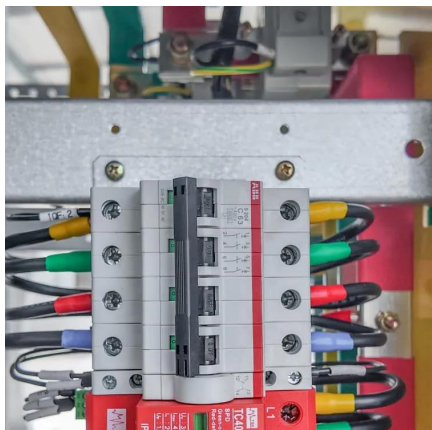
[How To Size an Inverter: Solar Inverter Sizing Explained](#)

When sizing an inverter, calculate the total wattage needed and understand surge vs. continuous power. Choose the right size with a 20% safety margin. Factor in simultaneous ...



[How to Determine the Right Inverter Sizes for Your ...](#)

Choosing the correct inverter sizes is crucial. Discover how to calculate your power needs, understand the consequences of improper sizing, ...



What Size Power Inverter Is Needed for a House [Full Guide]

Don't know what size power inverter is needed for your house? Check out this guide, and figure out how to determine the size of the inverter you need.

[What Size Inverter do I Need? \[with Examples\]](#)

Sizing an inverter is very simple, as long as you know how much power do you exactly need. If you think that at some point you will be plugging in more devices, consider that as well and ...



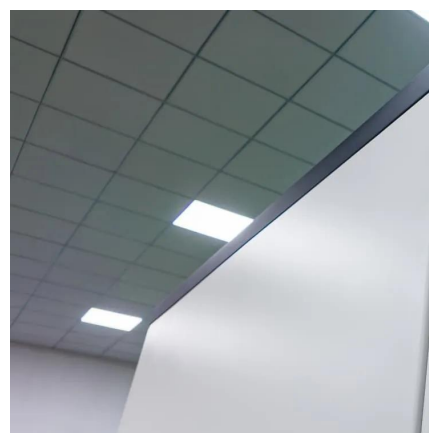


What Size Inverter Do I Need for My Power Needs

What Size Inverter Do I Need?1. The world's largest inverter was built in 2019 and could convert up to 800 megawatts of direct current (DC) from solar panels to alternating ...

What Size Inverter Do I Need to Run a House?

Many people ask: "What size inverter do I need to run my whole house?" The answer depends on several factors - from your peak power demand to whether you're using ...



What Size Solar Inverter Do I Need? Experts Break It Down

What Size Solar Inverter Do I Need? A solar inverter should closely match your solar system's output in kW--typically within 80% to 120% of your total panel capacity.

How do you properly size an inverter for a house? : r/solar

The average system size is well below 40A of backfeeding - that's about 30-35 panels depending on size and inverter configuration. Even in areas with heating loads, I rarely see houses that ...



What Size Solar Inverter Do You Need for Solar Panels? Explained

How Solar Inverter Sizing Works The size of the solar inverter you need is directly related to the output of your solar panel array. The inverter's capacity should ideally match the ...



How to Choose the Right Size Solar Inverter: Step-by-Step with ...

Wondering what size solar inverter do I need for your solar system? This guide walks you through calculating inverter size based on panel capacity, power usage, and safety ...



Size your solar system

Talk to your solar retailer or installer about the inverter specifications for inverter to panel size requirements. If the system size (total rated solar panel output) is more than the inverter ...



Choosing the Right Inverter: What Size Inverter Do I Need?

The size of the inverter you need depends on the total wattage requirements of the devices or appliances you want to power. To determine the appropriate size, you can calculate ...



[Inverter Size Chat: What Size Inverter Do I Need?](#)

What Size Inverter Do I Need? It's actually very easy to work out what size inverter you need. It all comes back to when appliances and electronics you ...

[How To Size an Inverter: Solar Inverter Sizing Explained](#)

When sizing an inverter, calculate the total wattage needed and understand surge vs. continuous power. Choose the right size with a 20% ...



Contact Us

For catalog requests, pricing, or partnerships, please visit:
<https://bringmethehorizon.eu>