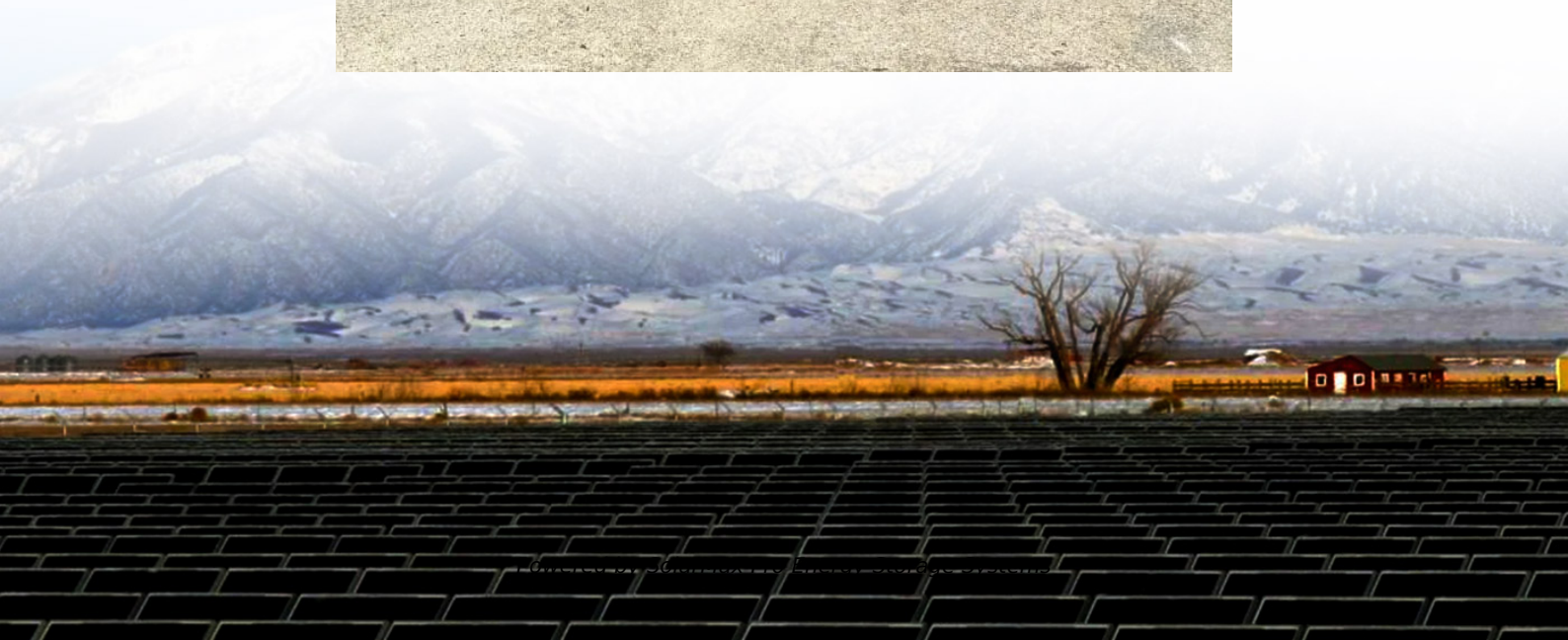


## **How big is the typical outdoor power supply**





## Overview

---

What size power supplies are available?

These power supplies offer DC output choices of 5, 12, 15, 24, and 48V in 80. 960 W sizes. Our Bulletin 1606-XLE Essential Switched Mode Power Supplies are available in 12, 24, and 48V DC output from 80. 960 W with 120% power boost. Our Bulletin 1606-XLP Compact Switched Mode Power Supplies are an excellent choice when you need to save space.

Why do you need an outdoor outlet?

An outdoor outlet is more than just a power source; it can transform your outdoor space, making it more livable and entertaining. With outdoor outlets, you can power up string lights for ambient evening light, set up an outdoor cinema, keep your outdoor kitchen appliances running, and more.

What type of outdoor outlet should I Choose?

The power requirement of the devices you plan to use also determines the type of outdoor outlet you should choose. If you're planning on operating high-wattage appliances, a higher amp outdoor outlet would be required. In dealing with outdoor electricity, safety is paramount. Here are some safety measures to consider:.

Can you plug a power tool into an outdoor outlet?

Just like an indoor outlet, you can plug any device or appliance into an outdoor outlet as long as the outlet can provide sufficient power for the device. However, remember to consider the weather and other outdoor factors before leaving or operating the device. Can outdoor outlets power larger devices like power tools or grills?

Yes.

Are electric outlets designed for outdoor use a good idea?



Electric outlets designed for outdoor use are growing increasingly desired by homeowners wanting to create the perfect outdoor living environment. Installing outdoor outlets is essential for those who want to safely and conveniently use electric appliances, lighting, and entertainment systems in their backyards, gardens, etc.

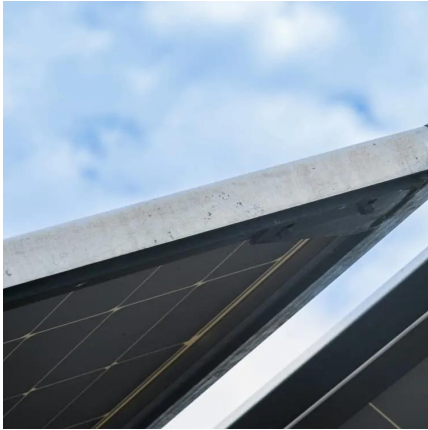
Do Outdoor outlets need a cover?

All outdoor outlets should have weatherproof covers, ideally "in-use" or "extra-duty" types, which protect against moisture even when plugs are inserted into the outlets. It's also a good idea to unplug and cover the outlets when they are not in use or during extreme weather conditions.



## How big is the typical outdoor power supply

---



### [What size outdoor power supply do I need for camping?](#)

One of the most important pieces of equipment is an outdoor power supply that can provide power for your camping needs. In this article, we'll discuss how to size the outdoor power supply you ...

### [Electrical Wiring and Power Supply for AC Installation](#)

Also, the power supply for an AC unit must comply with local codes and regulations. Power circuits should be dedicated to the air conditioning system, ...



### [Right Outdoor Power Configuration: Choose the Best Setup](#)

Find the right outdoor power configuration for your needs. Learn about amperage, voltage, and safety to ensure efficient power distribution.



### [How to power outdoor mounted TV? - ZeboZap](#)

4. Solar Power Solutions For the environmentally conscious, solar power can be an innovative and





green way to power your outdoor TV. While ...



### [How Big Of A Generator Do I Need To Run My Whole House?](#)

To determine what size generator you need to run your whole house, you first need to calculate the wattage of everything you want to power. Click through to learn how to do that.

### **Calculating LED Sign Power Consumption and Electricity Cost**

In the following table you can find an estimation of electricity consumption of indoor and outdoor LED signage. Please note that this table is an estimation of power consumption and depends ...



### [How to choose an outdoor power supply?](#)

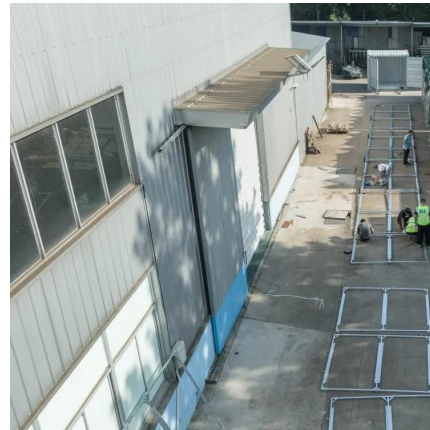
Outdoor portable power stations are very popular now. 500W or 1000W outdoor power supplies, which is more suitable? To be honest, the high-power ones are very cool to ...





### [How much electricity can an outdoor power supply store](#)

To identify the necessary capacity for an outdoor power supply, consider the aspect of devices you plan to use. Begin by calculating the combined wattage of your devices, ...

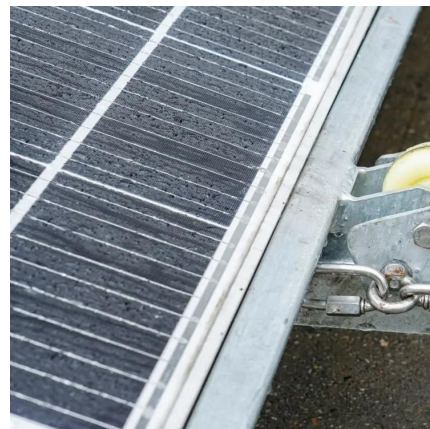


### [What Size Generator Do I Need For My House Chart](#)

What Size Generator Do I Need - A guide to typical loads with their running/starting watts, sizing procedure, for full, partial, air conditioning ...

### [Wiring a Barn or Shed: Everything You Need to Know](#)

Learn what size of wire you need to run to your shed or barn. Our guide provides helpful information to ensure you have safe and efficient ...



### [Generator Sizing Chart , Find the Right Generator](#)

Find the right generator size for your needs with Thompson Power's guide. Explore kVA requirements for various applications & factors to consider.



### [How to Choose an LED Power Supply » Easy ...](#)

For operation of 12V LED lamps and spotlights on the mains a power supply or transformer is needed. How can you find the right transformer within all offered ...



### [What Size Generator Do I Need for Camping: The ...](#)

Once you've identified all the essential devices, the next step is to figure out how much power they need. Check the power ratings of each device. This is ...

### [What Size Portable Power Station Do I Need](#)

A typical small power station weighs anywhere from 3 to 8 pounds, making it highly portable and ideal for short trips or to throw in a car for emergency use. Medium-sized power ...





## [How to choose an outdoor power supply?](#)

How to choose an outdoor power supply? The only purpose of this article is to save your time with the data I have compiled and to provide you with a comprehensive ...

## **What Size of a Portable Power Station Do I Need for Camping?**

Discover how to choose the perfect portable power station size for your camping needs. From basic overnight trips to weeklong off-grid adventures, find the ideal capacity and ...



## **How to Choose the Best Charging Method for an Outdoor Power Supply**

Below, we will introduce several common outdoor power supply methods and their typical application scenarios to help you make an informed decision for your next camping trip, ...

## [Standard outlet dimensions \[Explained in details\]](#)

Standard outlet dimensions play a crucial role in our everyday lives, although they often go unnoticed. These seemingly ordinary fixtures ...





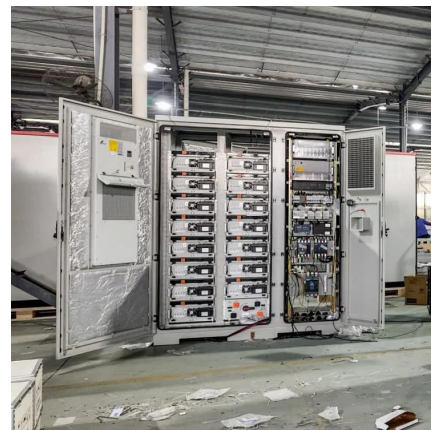
### [Layout of Substations , Types, Advantages and ...](#)

Introduction A substation is a crucial part of an electrical supply system that helps transfer high-voltage electricity from power plants to local ...



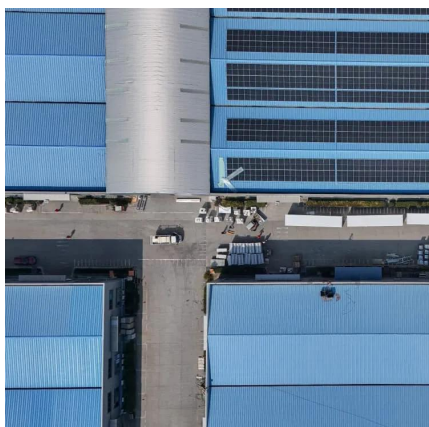
### [Everything You Need to Know About Outdoor Outlets](#)

In this article, we'll discuss what outdoor outlets are, how to choose the right outlet for your needs, safety considerations, and more. An outdoor outlet, also called a receptacle, is ...



### **What Size Generator Do I Need for Camping: The Right Power Supply**

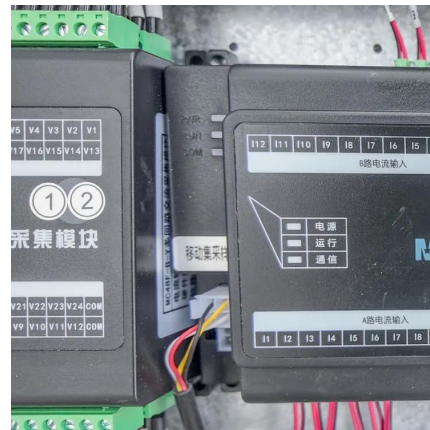
Once you've identified all the essential devices, the next step is to figure out how much power they need. Check the power ratings of each device. This is usually indicated in watts (W) and ...





## Hot Tub Power & Installation Requirements , Frye Electric

The normal power supply for a hot tub or spa is 220/240 volts and somewhere in the range of 30-60 amps. There are smaller spas and tubs that operate on 110/120 volts, but ...



## How much solar outdoor power supply is needed , NenPower

To determine the necessary solar outdoor power supply, several factors must be evaluated, including 1. energy consumption requirements, 2. location and sun exposure, 3. ...

## Contact Us

For catalog requests, pricing, or partnerships, please visit:  
<https://bringmethehorizon.eu>