



**SolarMax Pro Energy Storage Systems**

## **How big is a 13v 100W solar panel**





## Overview

---

A typical 100-watt solar panel is 41.8 inches long and 20.9 inches wide. It takes up 6.07 sq ft of area. If you have a 1000 sq ft roof, and you can use 75% of that roof area for solar panels, you can theoretically put 123 100-watt solar panels on a 1000 sq ft roof.



## How big is a 13v 100W solar panel

---



### What Size Battery Will a 100W Solar Panel Charge?

A 100W solar panel can charge a variety of battery sizes, from small 12V batteries to large 24V batteries. The size of the battery will determine how long it takes to charge.

### What Size Charge Controller Do I Need For A 100W Solar Panel

Choosing the right size charge controller for your 100-watt solar panel is crucial. Here's how to pick the perfect one and why you need it.



### 100w solar panel size chart

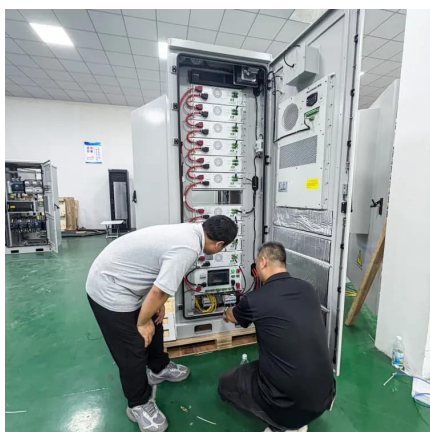
A comprehensive size chart detailing the dimensions and specifications of 100W solar panels, perfect for efficient and accurate planning of solar installations.

### Understanding Solar Panel Dimensions In 2025: A Complete Size ...

Explore the most common solar panel



dimensions in 2025, including residential and commercial sizes. Learn how solar panel size dimensions affect power, installation, and ...

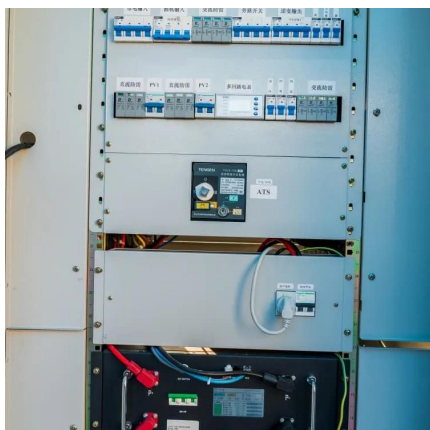


### Solar Panel Sizes and Wattage Explained

To calculate the required system size, multiply the number of panels by the output. For example, a 6.6 kW solar system typically consists of 20 panels each delivering 330W of ...

### **What Charge Controller Size Do I Need For a 100W Solar Panel?**

A charge controller is necessary to keep batteries from overcharging when connected to solar panels. When a 100W solar panel stores energy in a battery, the controller ensures everything ...



### STANDARD SOLAR PANEL SIZES AND WATTAGES 100W

Photovoltaic panel size standard 100w A typical 100-watt solar panel is 41.8 inches long and 20.9 inches wide. It takes up 6.07 sq ft of area.. A typical 100-watt solar panel is 41.8 inches long ...



## [Solar Panel Sizes: Choosing the Right Dimensions for ...](#)

Choosing the right solar panel size can make or break your system's performance. In this guide, we break down how to match your ...



### **100w solar panel size chart**

A comprehensive size chart detailing the dimensions and specifications of 100W solar panels, perfect for efficient and accurate planning of solar installations. This size chart provides a ...



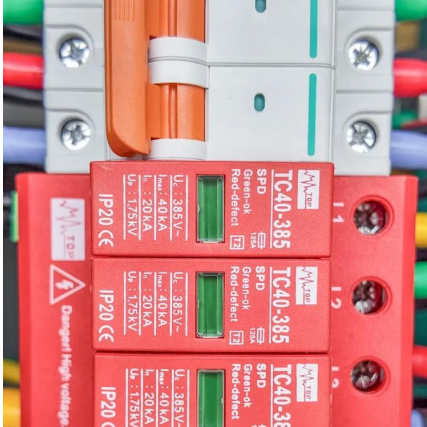
## [The Complete Off Grid Solar System Sizing Calculator](#)

An off-grid solar system's size depends on factors such as your daily energy consumption, local sunlight availability, chosen equipment, the ...



## [Solar Panel Size & Weight Guide \[+ Charts\] - Solartap](#)

Standard residential solar panels measure 66 inches by 40 inches, or a little over 5 feet long and 3 feet wide. Each panel therefore takes up around 18 square feet. Commercial ...



## 100 Watt Solar Panel Specifications

The main specifications that you want to look out for when purchasing a 100-watt solar panel would be the weight, the dimensions, cell type maximum power, maximum power voltage, ...



## [Solar Panel Size & Weight Guide \[+ Charts\] - Solartap](#)

Standard residential solar panels measure 66 inches by 40 inches, or a little over 5 feet long and 3 feet wide. Each panel therefore takes up ...

## Solar Panel Size To Charge A 12V Battery (50Ah, 80, 100, 120, ...)

For most setups, solar panels with wattage between 100 and 120 provide enough wattage to charge a 12V battery. Technically, you can use any size solar panel to charge your ...





## Solar Panel Sizes: Choosing the Right Dimensions for Any Project

Choosing the right solar panel size can make or break your system's performance. In this guide, we break down how to match your energy needs, roof space, and budget with ...

### [Standard Solar Panel Sizes And Wattages \(100W-500W ...\)](#)

To bridge that gap of very useful knowledge needed, we have compared and averaged the sizes of 100-watt to 500-watt solar panels available on the market. The goal here is to get to the ...

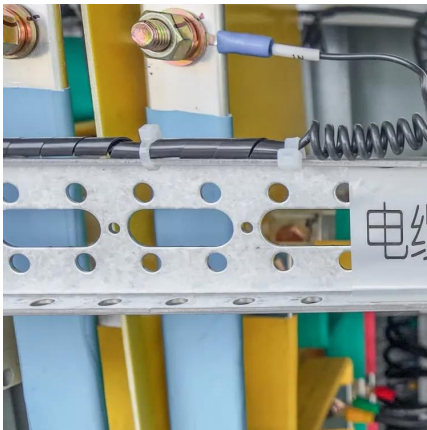


### [Solar Panel Size Chart - SizeChartly](#)

Answer: For residential use, the best solar panel size generally falls around 65 x 39 inches. These dimensions are designed to fit typical roof spaces while providing a good balance of efficiency ...

### [Solar Panel kWh Calculator: kWh Production Per Day, ...](#)

Here you can simply input what size solar panel you have (100W, 200W, 300W, and so on) and how many peak sun hours you get (average is about 5 hours). ...



### [100 Watt Solar Panel \(Everything you need to know\)](#)

What Size Is A 100 Watt Solar Panel? The dimensions of a 100-watt solar panel typically measure about 40 x 20 x 3 inches. Still, shorter ones ...

### [100 Watt Monocrystalline Solar Panel](#)

Product Overview Portable and easy to set up, this reliable, durable solar panel delivers 100 watts of free, clean, and quiet energy. Ideal for RVs, cabins, ...



## Contact Us

---

For catalog requests, pricing, or partnerships, please visit:  
<https://bringmethehorizon.eu>