



SolarMax Pro Energy Storage Systems

How big are the specifications of home photovoltaic panels





Overview

A typical residential solar panel measures about 65 inches by 39 inches (roughly 5.4 feet by 3.25 feet), though slight variations exist between manufacturers. These standard dimensions provide approximately 15 square feet of surface area per panel. How big are residential solar panels?

Today's residential solar panels come in remarkably consistent sizes, making it easier for homeowners to plan their solar installations. A typical residential solar panel measures about 65 inches by 39 inches (roughly 5.4 feet by 3.25 feet), though slight variations exist between manufacturers.

What are the different sizes of solar panels?

There are 3 standardized sizes of solar panels, namely: 60-cell solar panels size. The dimensions of 60-cell solar panels are as follows: 66 inches long, and 39 inches wide. That's basically a 66×39 solar panel. But what is the wattage?

That is unfortunately not listed at all. 72-cell solar panel size.

What are the characteristics of a solar panel?

Solar Panel Structure: The solar panel dimension, composition, and photovoltaic (PV) technology. Average Solar Panel Size: Available roof space, solar panels size, and the load your roof can support. Solar Irradiance: Earth has many places with different sunlight hours and sums of solar energy.

How does solar panel size affect a home?

Solar panel size directly affects: Choosing the right dimensions ensures that your system fits your space while generating enough electricity to meet your needs. Let's explore the most common solar panel size dimensions available today: 1. Residential Solar Panels These are the most popular panels for homes. 2. Commercial Solar Panels.

How much does a residential solar panel weigh?



In general, a residential solar panel is around 65-by-39 inches, weighing on average 40 pounds,” says Taylor. However, if your roof needs patches, repairs, or replacement, it is best to tackle that before installing solar equipment. Otherwise, addressing those issues later could be much trickier.

How big is a 60 cell solar panel?

The area of a residential 60 cell solar panel is 17.62 square feet, and the area of a commercial 72 cell solar panel is 21.13 square feet. Solar panel installation companies will measure the area of your roof to determine how many panels can be installed safely. Compare Quotes From Top-rated Solar Panel Installers



How big are the specifications of home photovoltaic panels

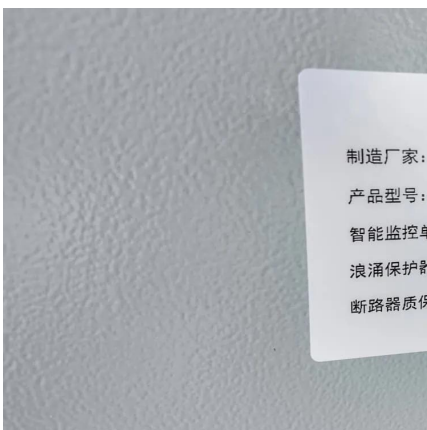
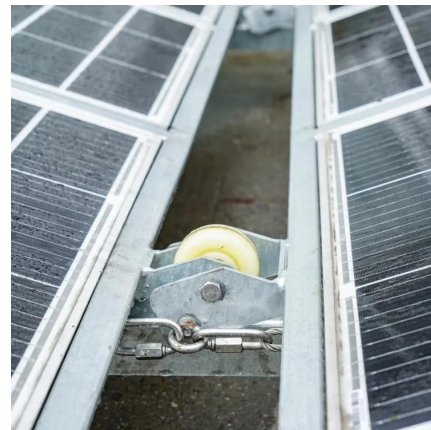


Solar Panel Dimensions and Weight: A Complete Guide , Angi

Most homes use 60-cell panels that are roughly 65-by-39 inches. Depending on the brand you buy, you'll find a couple of inches of variation on either dimension. For 60-cell ...

Understanding Solar Panel Dimensions In 2025: A Complete Size ...

Q1: What are the standard dimensions of a solar panel in 2025? A1: For homes, it's about 1.7m x 1.0m. For commercial projects, around 2.0m x 1.0m. Portable panels vary widely. ...



[What's the Average Solar Panel Size and Weight?](#)

Most residential solar panels contain about 60 cells in a 6-by-10 grid configuration. The frame and space between cells add a few extra inches, ...

[400 Watt Solar Panels: Specifications, Features & Costs](#)

Discover the specifications, features, and costs of 400-watt solar panels, and Learn how these



high-capacity panels can maximize energy generation for your renewable energy needs.

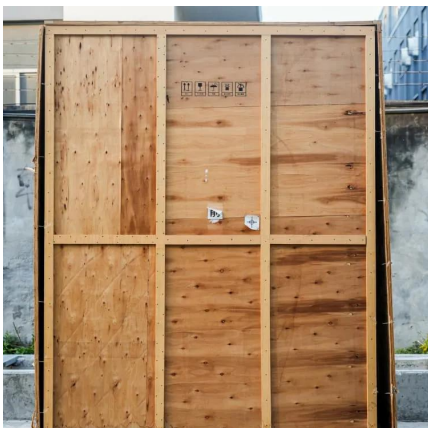


[How Much Do Solar Panels Cost? - Forbes Home](#)

Solar panel costs can be affected by many factors, including system size, type of panel and home electricity needs. We break down these and other factors in ...

Complete Guide to Solar Panel Size

Most home solar panels are about 5.5 feet x 3 feet and weigh roughly 40 pounds each. Most of the time, you won't see the size of solar panels expressed in feet. Instead, you'll see it's listed ...



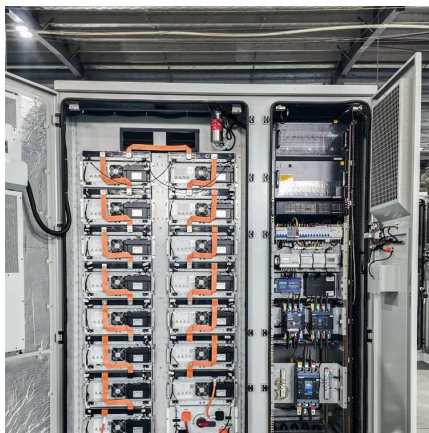
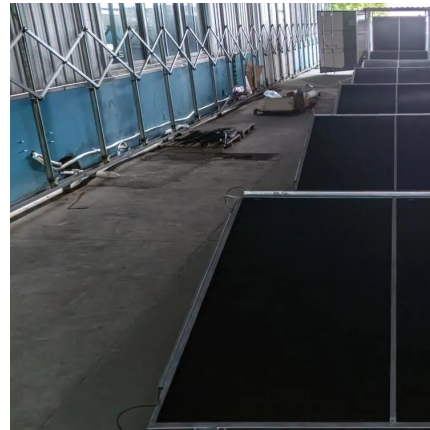
2025 Solar Panel Costs: Ultimate Guide to Pricing and ...

Is the price of solar panels falling? The price of solar panels has declined substantially over the last decade as the industry has matured and ...



[Solar Panel Datasheet Specifications Explained](#)

The article covers the key specifications of solar panels, including power output, efficiency, voltage, current, and temperature coefficient, as presented in solar panel datasheets, and ...



[Solar Panel Size and Weight: How Big Are Solar Panels?](#)

Residential solar panels consist of around 60 solar cells and are roughly 5.5 feet long and 3 feet wide. Solar panels usually weigh about 40 to ...

[Best Solar Panels for Your Home in 2025: Efficiency ...](#)

The best rooftop solar panels have high efficiency ratings and great warranties. Take a look at CNET's expert picks for the best home solar panels.



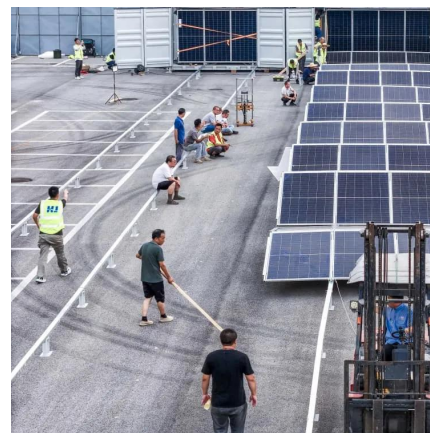
[Solar Panel Wiring Basics: Complete Guide & Tips to ...](#)

Photovoltaic (PV) systems are one of the most important renewable energy sources worldwide. Learning the basics of solar panel ...



Understanding Solar Panel Dimensions In 2025: A ...

Q1: What are the standard dimensions of a solar panel in 2025? A1: For homes, it's about 1.7m x 1.0m. For commercial projects, around 2.0m ...



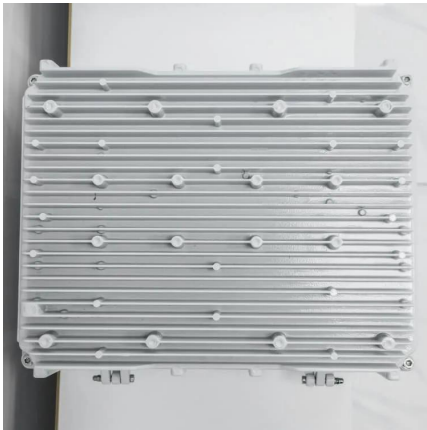
Solar Panel Dimensions and Weight: A Complete ...

Most homes use 60-cell panels that are roughly 65-by-39 inches. Depending on the brand you buy, you'll find a couple of inches of variation on ...

Solar Panel Dimensions and Sizes: Complete Guide

There are three main sizes of solar panels to know: 60-cell, 72-cell, and 96-cell. For commercial and residential solar panels, the 60-cell and 72-cell solar panels size are most commonly used ...





[Standard Solar Panel Sizes And Wattages \(100W-500W ...](#)

The goal here is to get to the average solar panel size by wattage. You can find typical dimensions of 100W, 150W, 170W, 200W, 200W, 220W, 300W, 350W, 400W, and 500W solar ...

[Standard Solar Panel Sizes and Dimensions](#)

What are the standard solar panel sizes in Canada? Solar panels are vital in harnessing the sun's power and converting it into usable energy. These innovative devices, ...



[Solar panel size and weight: everything you need to know](#)

Residential panels are usually made up of 60 PV solar cells, arranged in a 10 by 6 grid pattern. Although exact dimensions vary by manufacturer, home solar panels usually ...

Perfect Solar Panel Sizes for Your Home (Expert Sizing Guide)

A typical residential solar panel measures about 65 inches by 39 inches (roughly 5.4 feet by 3.25 feet), though slight variations exist between manufacturers. These standard ...



[Solar panel size and weight: everything you need to ...](#)

Residential panels are usually made up of 60 PV solar cells, arranged in a 10 by 6 grid pattern. Although exact dimensions vary by ...



Complete Guide to Solar Panel Size

An average solar panel system requires between 15 to 19 solar panels and takes up 260 to 340 square feet of space. Solar panel efficiency, output, a good warranty, and a trusted brand are ...



[What's the Average Solar Panel Size and Weight?](#)

Most residential solar panels contain about 60 cells in a 6-by-10 grid configuration. The frame and space between cells add a few extra inches, making the average residential ...





[Solar Panel Dimensions and Sizes: Complete Guide](#)

There are three main sizes of solar panels to know: 60-cell, 72-cell, and 96-cell. For commercial and residential solar panels, the 60-cell and 72-cell solar ...



[Solar Panel Size and Weight: How Big Are Solar Panels?](#)

Residential solar panels consist of around 60 solar cells and are roughly 5.5 feet long and 3 feet wide. Solar panels usually weigh about 40 to 50 pounds. Commercial solar panels ...

[Solar Panel Size And Weight: A Comprehensive Guide](#)

A typical residential solar panel measures about 65 inches by 39 inches (roughly 5.4 feet by 3.25 feet), though slight variations exist between manufacturers. These standard ...



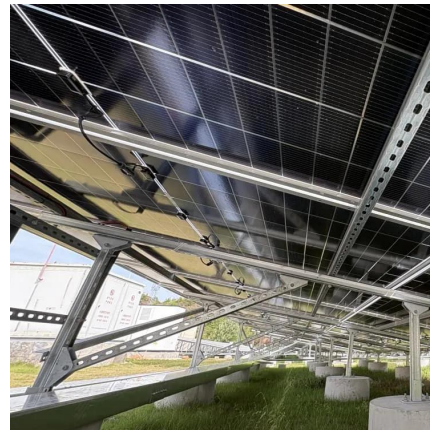
[Solar Panel Size And Weight: A Comprehensive Guide](#)

When considering residential solar panels, typical configurations consist of 60 cells measuring approximately 3.25 feet by 5.5 feet. These panels cover an area of 17.62 square ...



We Analyzed 100 Solar Panels: Dimensions, ...

The most common depth is 1.38 inches. Panel dimensions are influenced by wattage, cell technology, and panel design, which means sizes will always ...



How Big Are Solar Panels? Solar Panel Size and Weight

In short, solar panel size and weight shape how a system is planned, installed, and maintained. They influence everything from roof fit and structural support to the efficiency ...

Contact Us

For catalog requests, pricing, or partnerships, please visit:
<https://bringmethehorizon.eu>