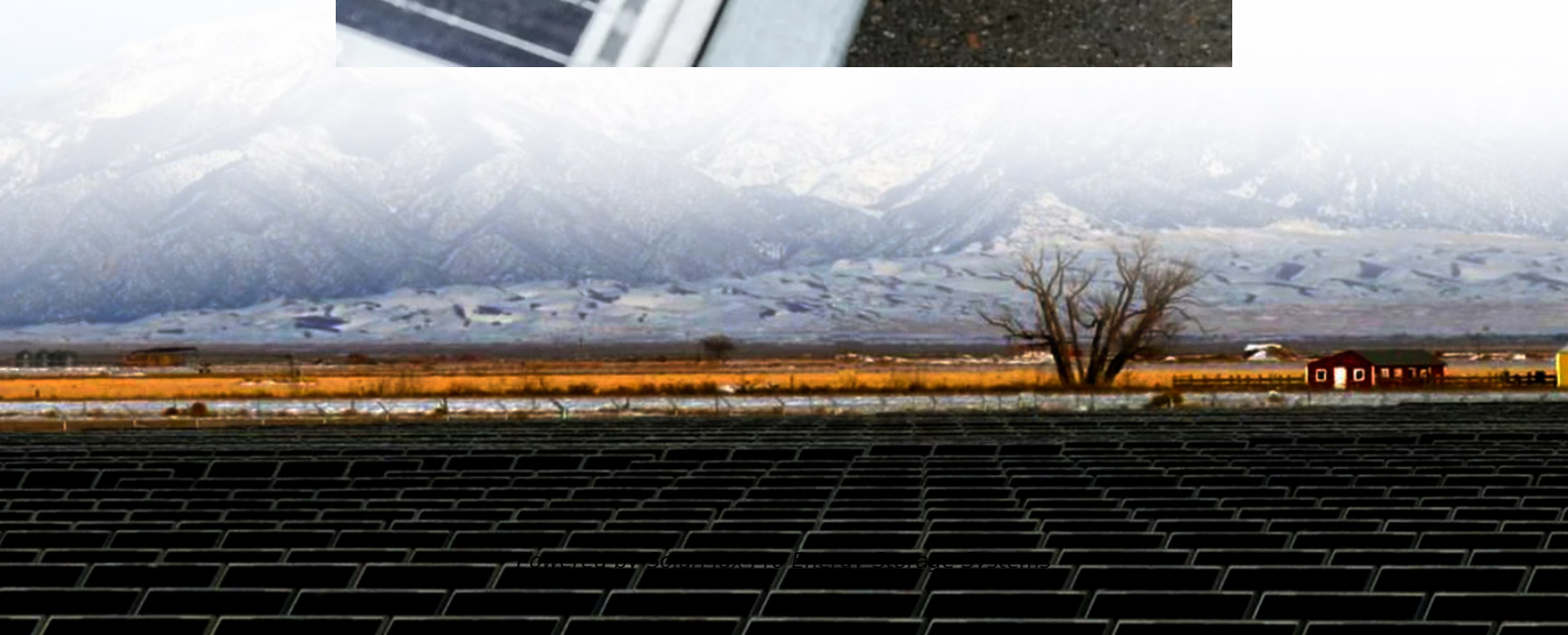
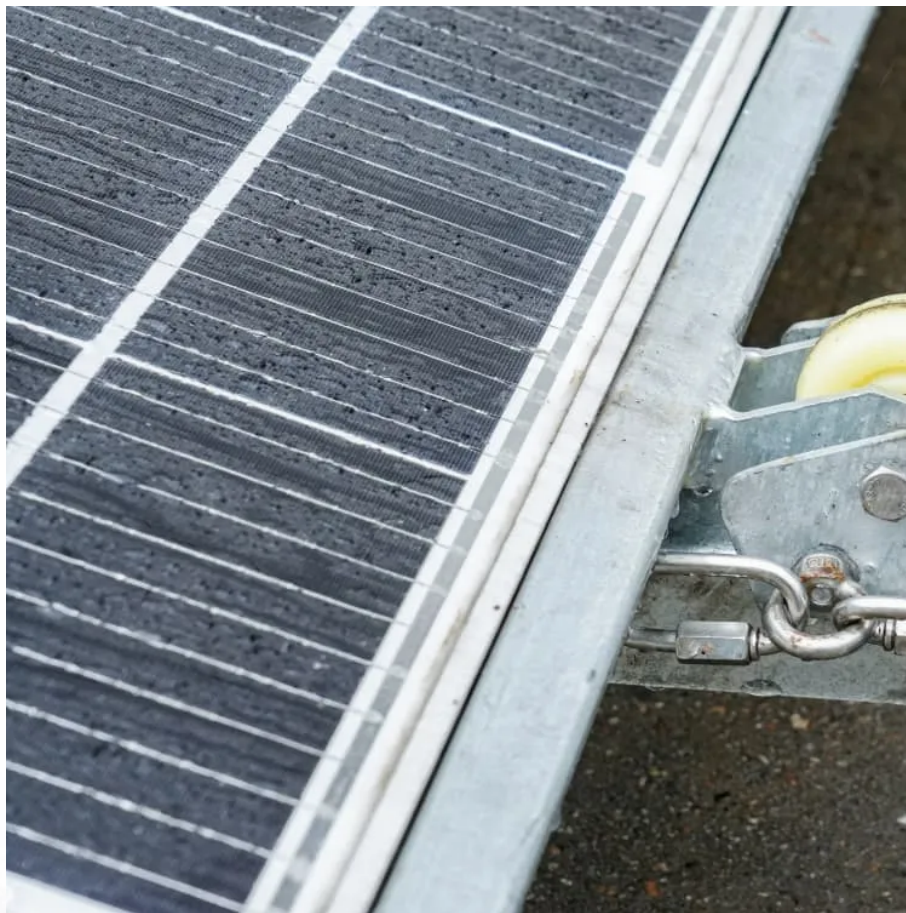




**SolarMax Pro Energy Storage Systems**

## **How big an inverter should I use for a 30kw generator**





## Overview

---

Before we go any further, we highly recommend that you choose a pure sine wave inverter. This type of inverter delivers high-quality electricity, similar to your utility company.

We have summarized the appliances that inverters from 300W to 3000W can run depending on their rated maximum power. Note to our readers: Use the above formula to determine.

The calculation for the required inverter size is done using the following formula:  $\text{Inverter Size (W)} = (\text{Total Wattage} \times \text{Safety Factor}) \div \text{Inverter Efficiency}$  This ensures that the inverter can handle both the load and the efficiency losses. Do I need an inverter size chart?

The need for an inverter size chart first became apparent when researching our DIY solar generator build. Solar generators range in size from small generators for short camping trips to large off-grid power systems for a boat or house. Consequently, inverter sizes vary greatly.

What size solar inverter do I Need?

A 4.5 kW array (or ten 450-watt solar panels) would just about cover your consumption. The type of solar panels you choose can also impact the size of the inverter you need. Different types of solar panels have different wattage ratings and efficiency levels. The three main types of solar panels are monocrystalline, polycrystalline, and thin film.

How to calculate inverter size?

Using the Inverter Size Calculator is quick and easy. You'll need three inputs: Total Wattage (W): This is the total power consumption of all the appliances or devices you plan to run through the inverter. Safety Factor: A multiplier to ensure some buffer above your actual power requirement. Typically ranges from 1.1 to 1.5.

How much power does an inverter need?

The continuous power requirement is actually 2250 but when sizing an



inverter, you have to plan for the start up so the inverter can handle it. Third, you need to decide how long you want to run 2250 watts. Let's say you would like to power these items for an eight-hour period.

What size generator do I Need?

If you want to run more power-hungry items such as a water heater or air conditioning unit, you will need to look at a 10,000-watt model. In general, if you want to power a whole house, you will need a diesel, gasoline, or dual fuel generator; we have reviewed the best options in each category; click the links below to read more.

What size cable do I need for a 3500W inverter?

For inverters rated up to 3500W, the cable size should be 1/0 AWG, sufficient to handle the startup and continuous current required. Another consideration is the inline fuse, as this will protect both sides of the system in the event of a shortage in the system. To ascertain the fuse you need, divide the AC wattage by the DC Voltage.



## How big an inverter should I use for a 30kw generator

---



### What Size Power Inverter Is Needed for a House [Full Guide]

In general, a 3000W to 5000W inverter works well for most homes, but the exact size depends on factors like household appliances, total power consumption, and battery ...

### kW to Cable Size Chart & Electrical Cable Size Chart Amps

Table of motor kW to cable size chart is prepared based on the direct online start and star-delta starting. 3.7kW for 7.5Amps 5.5kW for 9.56 Amps for that 4Sqmm copper Cable



### [how big an inverter do i need for 10kw solar](#)

How Big of an Inverter Do I Need for a 10 kW Solar System? Introduction When installing a 10 kW solar system, it is essential to choose the right size inverter to optimize its performance and ...

### What Size Solar Inverter Do I Need?

The exact impact of your solar battery on inverter size depends on factors like battery capacity, inverter compatibility, and your specific





energy ...



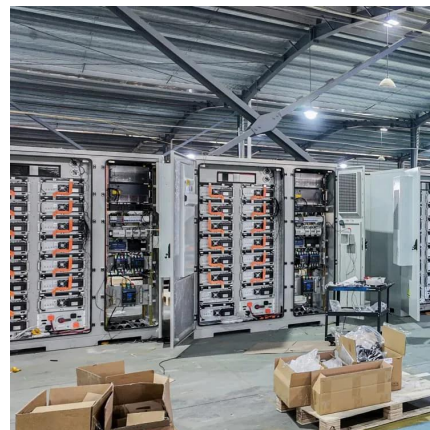
### Size of generator to charge batteries

I am having a 10kw victron solar system installed part of this system is 2 x 5kw inverter chargers. Type Multiplus 48/5000/70-100, I already have a 6kw back-up auto start generator, I am ...



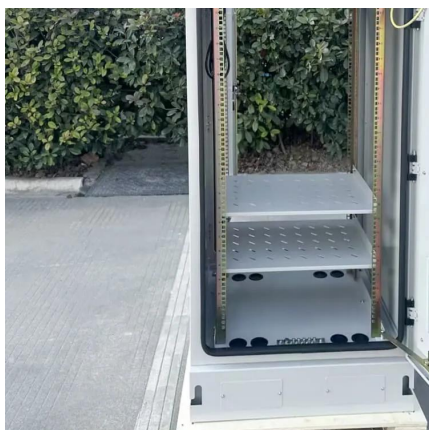
### **Inverter Wire Size Calculator**

Noting the size of inverter that you're using is the first step in finding safe cables. Whether you need to know what size cables for a 2000-watt inverter or what ...



### **Inverter Size Calculator**

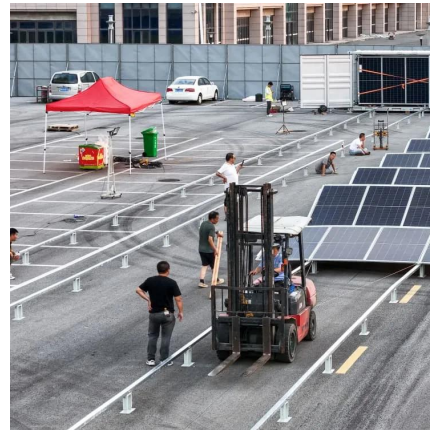
Learn how to calculate the required size of an inverter with our in-depth guide. We provide a handy formula, examples, and answers to common questions to help you make the right ...





## [How To Size A Solar Inverter in 3 Easy Steps](#)

In this guide, we share 3 easy steps on how to size a solar inverter correctly. We explain the key concepts that determine solar inverter sizing including your power needs, the type and number ...



## [The Only Inverter Size Chart You'll Ever Need](#)

We created a comprehensive inverter size chart to help you select the correct inverter to power your appliances. The need for an inverter size chart first became apparent ...

## [Can You Add an Inverter to a Generator?](#)

What is an inverter for generator The functions of a generator and an inverter are different. A generator is a device that produces electricity from ...



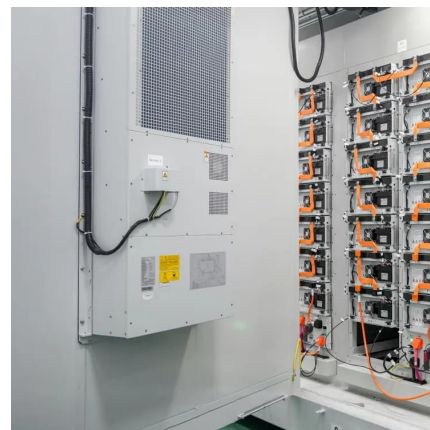
## [What Size Inverter You Need \(Calculations + Battery\)](#)

Should I Choose An Inverter Or A Generator? The answer to this depends on the load levels you want to run and how much noise you (and ...



## What Size Solar Inverter Do I Need? Experts Break It ...

Picking the right solar inverter isn't rocket science, but it's not a wild guess either. Match your inverter size to your solar panel output, leave a little ...



## [How To Size A Solar Inverter in 3 Easy Steps](#)

In this guide, we share 3 easy steps on how to size a solar inverter correctly. We explain the key concepts that determine solar inverter sizing including your ...

## [What Size Power Inverter Is Needed for a House \[Full ...](#)

In general, a 3000W to 5000W inverter works well for most homes, but the exact size depends on factors like household appliances, total power ...







### [What Size Inverter You Need \(Calculations + Battery\)](#)

Should I Choose An Inverter Or A Generator? The answer to this depends on the load levels you want to run and how much noise you (and your neighbors) are prepared to put ...

### **What Size Solar Inverter Do I Need? Experts Break It Down**

Picking the right solar inverter isn't rocket science, but it's not a wild guess either. Match your inverter size to your solar panel output, leave a little headroom, and don't cheap ...



### [What Size Inverter Generator for 30 Amp Rv?](#)

Find out the best size inverter generator for your 30 Amp RV with our detailed guide. Learn how to choose the right generator based on your ...

### [What Size Inverter You Need \(Calculations + Battery\)](#)

Fuse and cable sizes Inverter Vs. Generator If you're genuinely sick and tired of dealing with power outages, it's time to find out what size inverter ...





### [How To Size an Inverter: Solar Inverter Sizing Explained](#)

When sizing an inverter, calculate the total wattage needed and understand surge vs. continuous power. Choose the right size with a 20% ...



### **How do you properly size an inverter for a house? : r/solar**

The AC output will always be at most the size of the inverter, not the DC input to the inverter. But that's just power -- power over time is energy which is what you use. I very very strongly ...



### **Generator Gas Pipe Sizing Chart for Natural Gas or Propane (LP)**

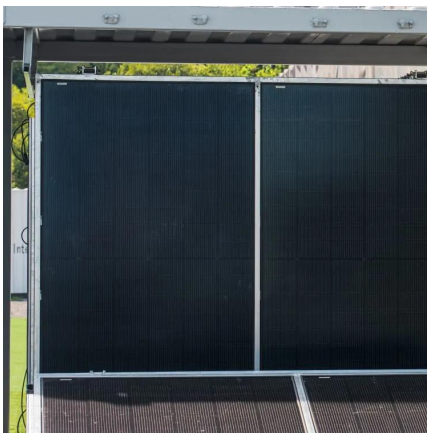
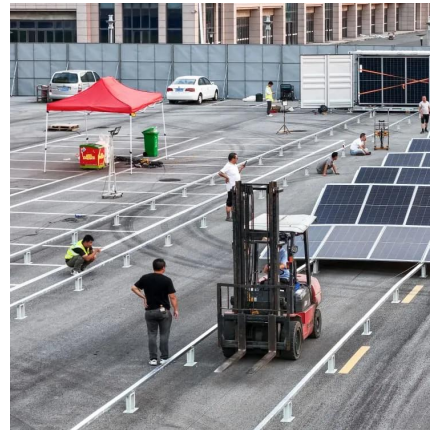
Use this generator gas line sizing guide to calculate maximum pipe run for natural gas and LP gas lines. These charts and equations are provided by Elliott Electric Supply, distributor of ...





### [What Size Generator Do I Need? \(With Easy To Use ...](#)

To figure this out, you need to add up the wattage of all the appliances you want it to power simultaneously, plus the highest-powered ...

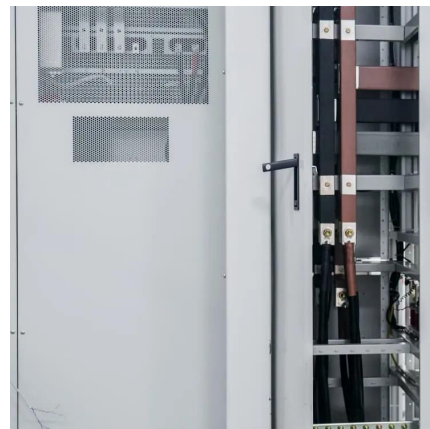


### [The Complete Off Grid Solar System Sizing Calculator](#)

Below is a combination of multiple calculators that consider these variables and allow you to size the essential components for your off-grid solar ...

### **What size inverter do I require?**

We have three households on the property and I would like to find out what size inverter would be recommended to be able to handle the peak consumption during load ...



### [The Complete Off Grid Solar System Sizing Calculator](#)

Below is a combination of multiple calculators that consider these variables and allow you to size the essential components for your off-grid solar system: The solar array. The ...



## What Size Generator Do I Need? (With Easy To Use Calculator)

To figure this out, you need to add up the wattage of all the appliances you want it to power simultaneously, plus the highest-powered item you want to be able to use in addition ...



## [How To Size an Inverter: Solar Inverter Sizing Explained](#)

When sizing an inverter, calculate the total wattage needed and understand surge vs. continuous power. Choose the right size with a 20% safety margin. Factor in simultaneous ...

## Contact Us

---

For catalog requests, pricing, or partnerships, please visit:  
<https://bringmethehorizon.eu>