



SolarMax Pro Energy Storage Systems

How big an inverter should I choose for a 30kw photovoltaic capacity





Overview

What size solar inverter do I Need?

A 4.5 kW array (or ten 450-watt solar panels) would just about cover your consumption. The type of solar panels you choose can also impact the size of the inverter you need. Different types of solar panels have different wattage ratings and efficiency levels. The three main types of solar panels are monocrystalline, polycrystalline, and thin film.

Should your inverter size match your solar panel size?

Match your inverter to your lifestyle, not just your roof. If you're running a fridge, home office, and PS5 all day, size accordingly. If you're barely home, go leaner. Here's the cheat code: your inverter size should usually match your solar panel system's size in kilowatts.

How do I choose a solar inverter?

When designing a solar installation, and selecting the inverter, we must consider how much DC power will be produced by the solar array and how much AC power the inverter is able to output (its power rating).

Why are solar inverters sized lower than kilowatt peak?

Inverters are usually sized lower than the kilowatt peak (kWp) of the solar array because solar panels rarely achieve peak power. The solar array-to-inverter ratio is calculated by dividing the direct current (DC) capacity of the solar array by the inverter's maximum alternating current (AC) output.

How does the inverter size calculator work?

Our Inverter Size Calculator simplifies this task by accurately estimating the recommended inverter capacity based on your solar panel power and quantity. By inputting your panel's rated power and number of panels, the calculator produces a recommended inverter power range that aligns with 80-100% of your system's total DC capacity.



How many kW inverters do I Need?

Therefore, we typically recommend 5 kW inverters which cater even to the peak demand of most British households. Most inverters charge and discharge at the same rate. However, this is not always the case. For example, the Tesla PW3 has a charge capacity of 5 kW and discharge capacity of 11.5 kW.



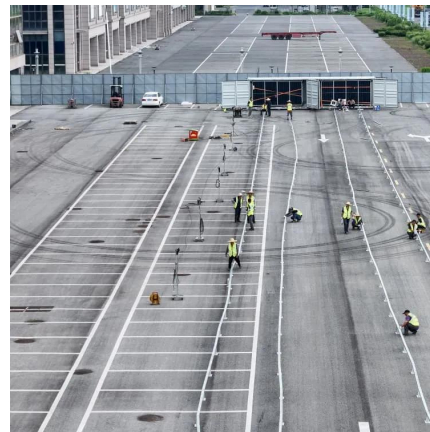
How big an inverter should I choose for a 30kw photovoltaic capacity



To calculate the ideal inverter size for your solar PV system, you should consider the total wattage of your solar panels and the specific conditions of your installation site. The general rule is to ...

What Size Inverter You Need (Calculations + Battery)

The size of the inverter required will be determined by the total wattage of the appliances you need to operate and the time they need to run. ...



What Size Inverter Do I Need ?A Complete Guide to Choosing ...

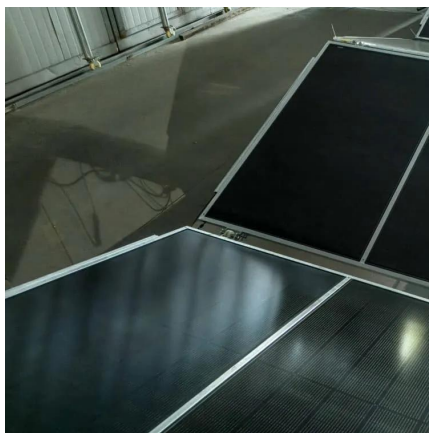
Discover how to select the perfect inverter size for your solar or backup power system. Learn to calculate power requirements, account for surge loads, match battery ...

Solar inverter size: Calculate the right size for your inverter

Inverters work most efficiently when operating near their maximum capacity and are typically



sized to be roughly the same size as your solar panels. Inverters are usually sized lower than ...

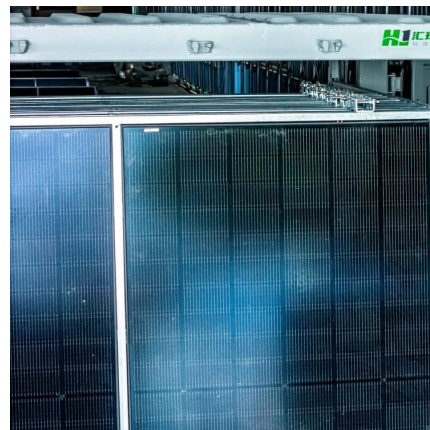


[How To Size A Solar Inverter in 3 Easy Steps](#)

As a basic estimate, you should try to roughly match the size of the inverter to the size of the solar array. Solar arrays are generally rated in kilowatts (kW), so you can easily

What Size Inverter Do You Need for Your Home? , Renogy US

Searching for the best power inverter for home? Wondering what size will perfectly meet your needs? This article helps you choose the right inverter for the house.



How to Choose the Right Size Solar Inverter: Step-by-Step with ...

This guide walks you through calculating inverter size based on panel capacity, power usage, and safety margins. We use real examples from installations in Texas and ...



Solar Inverter Sizing Guide for Maximum Efficiency , Mingch

This article explains how to calculate your inverter size, what affects it, and how to avoid costly mistakes, especially when using high-efficiency solutions like MINGCH Electrical's ...



[Inverter Size Calculator - self2solar](#)

Choosing the right inverter size is essential for a reliable and efficient solar power system. Our Inverter Size Calculator simplifies this task by accurately estimating the ...

What Size Solar Inverter Do I Need? Experts Break It ...

What Size Solar Inverter Do I Need? A solar inverter should closely match your solar system's output in kW--typically within 80% to 120% of your ...



[What Size Inverter Will Run a Home? Fenice Energy](#)

Now, here is how you calculate the inverter battery capacity, = (585 watts x 2 backup hours) / (12 volts) = 97.5 Ah This is the ideal inverter ...



How to Determine the Right Inverter Sizes for Your ...

Choosing the right inverter size ensures your electrical needs are met efficiently and safely. An inverter converts direct current (DC) electricity ...



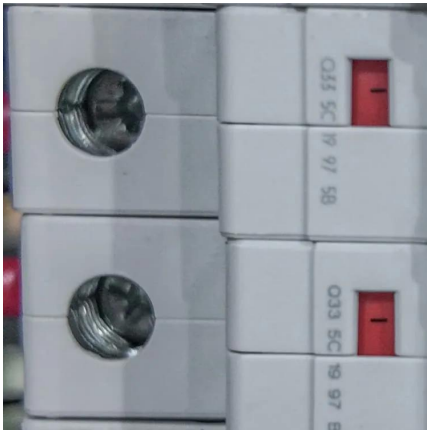
Choosing The Right Size Solar Inverter

Given below are the factors that determine the size of the inverter. Geographical Factors play a vital role in sizing your solar inverter due to their ...

A Guide to Solar Inverters: How They Work & How to Choose Them

Learn what a solar inverter is, how it works, how different types stack up, and how to choose which kind of inverter for your solar project.





[How To Size A Solar Inverter in 3 Easy Steps](#)

In this guide, we share 3 easy steps on how to size a solar inverter correctly. We explain the key concepts that determine solar inverter sizing including your power needs, the type and number ...

[How to Choose the Right Inverter Size for Home](#)

Learn how to choose the right inverter for your home. Calculate inverter capacity, understand kVA requirements, and pick the best inverter for reliable backup.



[Solar Inverter Sizing Guide for Maximum Efficiency](#)

This article explains how to calculate your inverter size, what affects it, and how to avoid costly mistakes, especially when using high ...

How do you determine what size of inverter you will need to

So, with that analogy, kwh is your gas tank size (how big your battery is) and your inverter is the size of your engine (it will give you a certain number of watts to use from your battery) So a

...



[kW to Cable Size Chart and Amp Chart](#)

Our kW to Cable Size and Amp Chart can help you determine the appropriate cable size for your electrical projects. Easily convert power (kW) to current (Amps) & ...



Inverter Size Calculator

The Inverter Size Calculator is a digital tool that allows you to determine the correct inverter size needed for a specific total wattage load, considering factors like safety margins and inverter ...



Solar inverter size: Calculate the right size for your ...

Inverters work most efficiently when operating near their maximum capacity and are typically sized to be roughly the same size as your solar panels. Inverters ...





How big an inverter should I choose for a 30kw photovoltaic ...

As a basic estimate, you should try to roughly match the size of the inverter to the size of the solar array. Solar arrays are generally rated in kilowatts (kW), so you can easily



Choosing The Right Size Solar Inverter

Given below are the factors that determine the size of the inverter. Geographical Factors play a vital role in sizing your solar inverter due to their impact on the production of ...

What Size Solar Inverter Do I Need? Experts Break It Down

What Size Solar Inverter Do I Need? A solar inverter should closely match your solar system's output in kW--typically within 80% to 120% of your total panel capacity.



Solar inverter sizing: Choose the right size inverter

Most PV systems don't regularly produce at their nameplate capacity, so choosing an inverter that's around 80 percent lower capacity than the PV system's nameplate output is ideal.



How to size an inverter that can run your air conditioner?

In any case, the Continuous Power rating of the inverter you choose should be higher than the power usage of your air conditioner. Later in ...



Solar inverter sizing: Choose the right size inverter

Choosing the right inverter size is essential for a reliable and efficient solar power system. Our Inverter Size Calculator simplifies this task ...



Contact Us

For catalog requests, pricing, or partnerships, please visit:
<https://bringmethehorizon.eu>