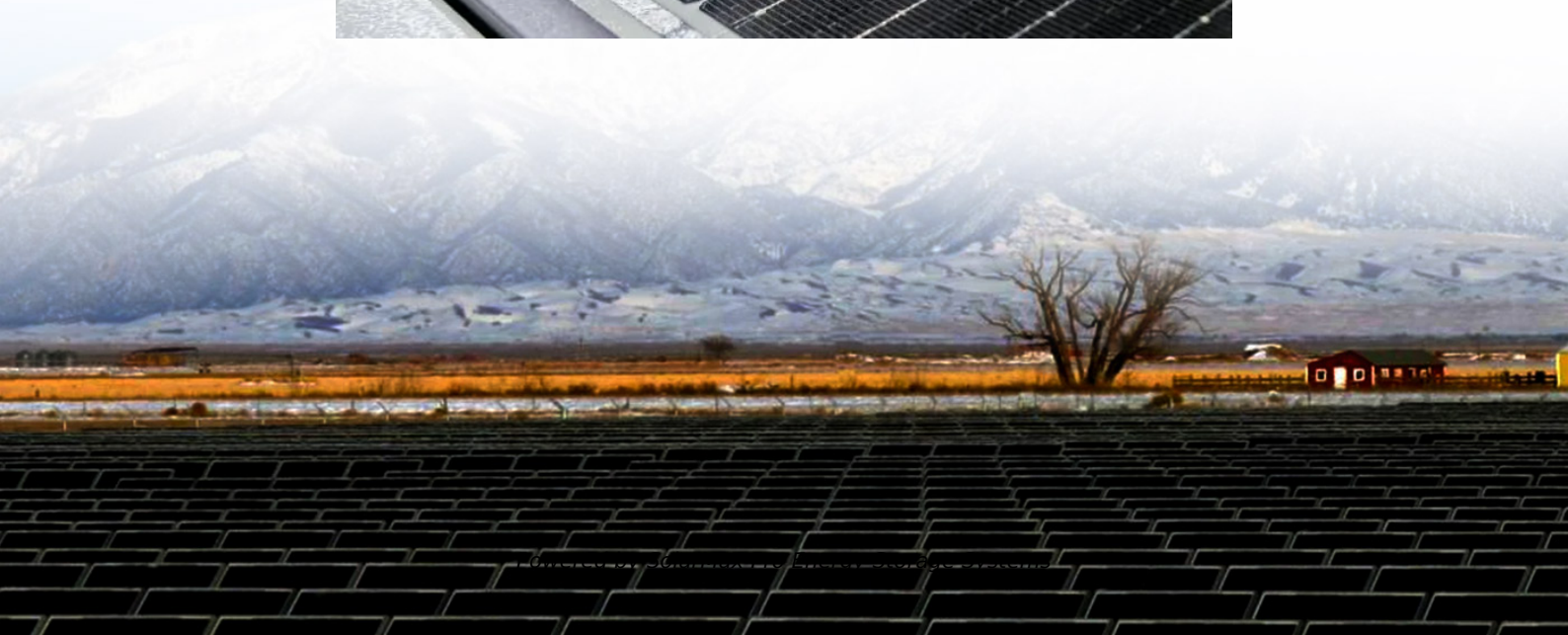
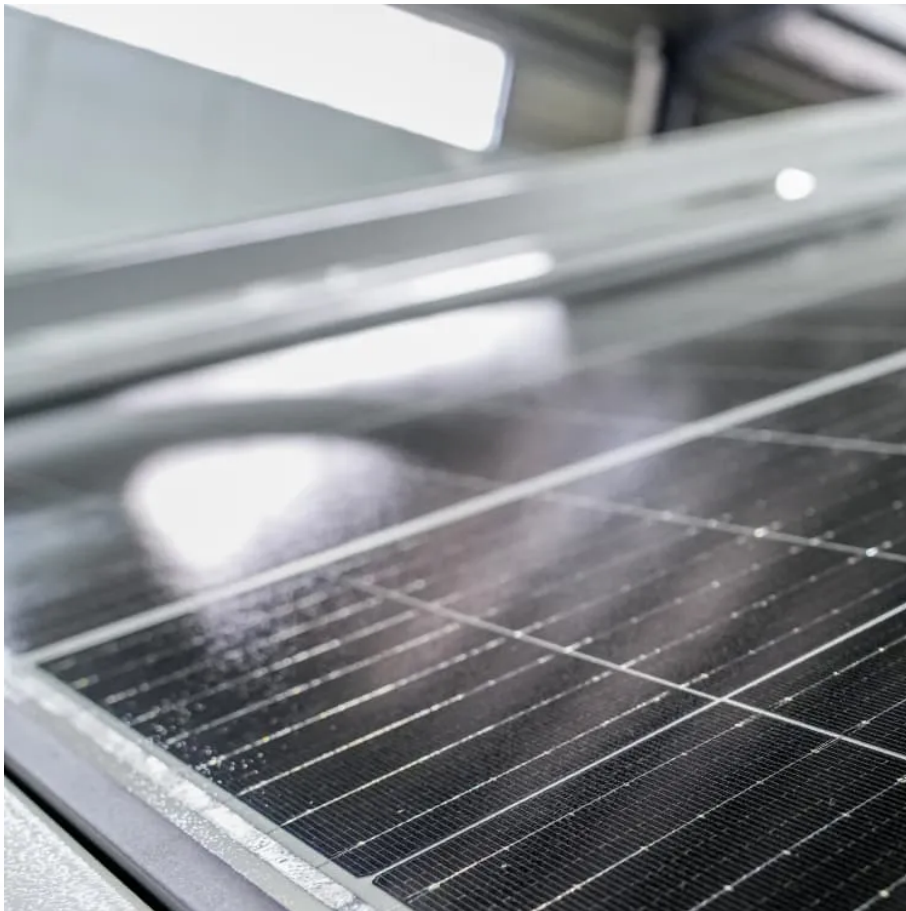




SolarMax Pro Energy Storage Systems

Gw12kt model inverter





Gw12kt model inverter



GoodWe GW12KT-DT 3-phase Solar Inverter

With 50% DC input oversizing, 10% AC output overloading capability, it drives this inverter to its full capacity by adding extra reflections from the backside of bifacial panels, to increase your ...

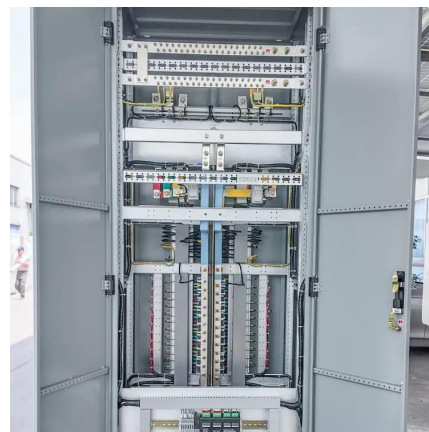


DT?SDT??????20150513

To WiFi model inverters, If the Power light flashes every 0.5sec, it indicates the connection between inverter and your WiFi router is

SDT G2 Series

With 150% DC input oversizing, 110% AC output overloading capability, it drives your inverter to its full capacity by adding extra reflections from the backside of bifacial panels, to increase ...



GOODWE SDT G2 SERIES USER MANUAL Pdf ...

View and Download Goodwe SDT G2 Series user manual online. Grid-Tied PV Inverter. SDT G2 Series inverter pdf manual download. Also for: Gw4k-dt, ...



abnormal; If the Power light flashes every 2.5sec, it ...



Quick Installation Guide

Kui inverteri läheduses leidub raadio- või juhtmevaba side varustust, mille sagedus on alla 30 MHz, siis tuleb teil: Installida inverter vähemalt 30 m kaugusele juhtmevabast varustusest. ...

Goodwe GW12KT-DT

Goodwe GW12KT-DT inverter 3~ Item No. 3002000036 Depth [mm] 155 Width [mm] 354 Height [mm] 433 Weight [kg] 18,0 Type of DC-connector MC4 max. input voltage [V] 1000 AC-nominal ...



Goodwe GW12KT-DT - SolarTopStore

The SDT G2 series of inverter from GoodWe is one of the best options available in the residential & commercial sectors owing to its technical strengths, which make it one of the most ...



[GoodWe Three-phase string inverter DTS series](#)

The GoodWe GW4K-DT to GW12K-DT (+DC-SWITCH/WIFI) three-phase string inverter with DC switch is a powerful solution for harnessing solar energy in homes and commercial ...



[Goodwe GW12KT-DT \(+DC-SWITCH/WIFI\) , SolarTraders](#)

Introducing the Goodwe GW12KT-DT (+DC-SWITCH/WIFI) 3 phase inverter - the perfect solution for your solar energy needs. Through its 18.0 kW (DC) and 12.0 kW (AC) power output, the ...

[GW12KT-DT \(+DC-SWITCH/WIFI\) , Solar Inverters](#)

Product information The SDT G2 series of inverter from GoodWe is one of the best options available in the residential & commercial sectors owing to its technical strengths, which make it ...



[Manual GoodWe GW12KT-DT Grid-tie Inverter](#)

Are you looking for the manual of your GoodWe GW12KT-DT Grid-tie Inverter in a different language? Choose your preferred language on our homepage and search for the model ...



GoodWe GW12KT-DT G2 , no communication -- SolarAction

This inverter is particularly beneficial for homeowners and small businesses looking to optimize their energy consumption while reducing costs. The GoodWe GW12KT-DT G2 , no

...



User Manual

The SDT G2 Series inverter is a three-phase PV string grid-tied inverter. The inverter converts the DC power generated by the PV module into AC power and feeds it into the utility grid. The ...

SDT G2 Series

The GoodWe 17-25kW SDT Series inverter is especially designed for three-phase residential and small commercial projects. With its compact design, the SDT inverter is 45% smaller than the

...





[Goodwe GW12KT-DT , Inverters , sun.store](#)

For enhanced safety, this inverter is able to incorporate AFCI. Its high efficiency (98.3%) and its enhanced oversizing & overloading capabilities represent an outstanding improvement in the ...

SDT G2 SERIES USER MANUAL

inverters. model The of the actual AC connector accessories and mounting bracket are various depending the diferent Only model GW15KAU-DT and GW20KAU-DT may difer. are equipped ...



[GoodWe , SDT G2 Series 4-15 kW , Solar Inverter ...](#)

GoodWe Technologies Co., Ltd. Solar Inverter Series SDT G2 Series 4-15 kW. Detailed profile including pictures, certification details and manufacturer PDF

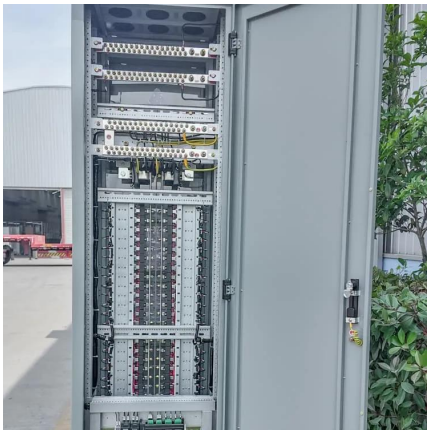
[Residential Smart Inverter Solutions](#)

The energy storage system consists of inverter, battery system, and smart meter. This manual describes the product information, installation, electrical connection, commissioning, ...



SDT G2 PLUS+ Series

The GoodWe 4-20 kW SDT G2 PLUS+ series inverter is specially designed for three-phase residential and small commercial projects. The integrated features of high efficiency allow for ...



[GOODWE SDT G2 SERIES USER MANUAL Pdf Download](#)

View and Download Goodwe SDT G2 Series user manual online. Grid-Tied PV Inverter. SDT G2 Series inverter pdf manual download. Also for: Gw4k-dt, Gw5k-dt, Gw6k-dt, Gw8k-dt, Gw10kt ...



Contact Us

For catalog requests, pricing, or partnerships, please visit:
<https://bringmethehorizon.eu>