



**SolarMax Pro Energy Storage Systems**

# **Frequency range of solar base station EMS**





## Overview

---

How do I select a EMS base station Radio?

To select a channel on an EMS base station radio, you should set the channel selector on the local primary channel as used in your area. The channel select button must be depressed in order to transmit on the selected frequency.

What CTCSS tone do EMS med radios use?

For this reason, all New Mexico EMSCOM UHF radios on the EMS MED channels should be using CTCSS tone 136.5. Types of Stations: A base station transmits directly to mobiles and portables. If the base station is at some distance away from the operator, it is known as a remote base station.

How are UHF frequencies assigned?

The UHF frequencies are assigned in pairs. In semi-duplex mode the higher frequency of the pair is usually used by the mobile while the lower frequency is used by the base (usually a hospital). Some EMS systems have the system configured for full-duplex where both parties can transmit and receive at the same time.

Are solar powered cellular base stations a viable solution?

Cellular base stations powered by renewable energy sources such as solar power have emerged as one of the promising solutions to these issues. This article presents an overview of the state-of-the-art in the design and deployment of solar powered cellular base stations.

What is the Santa Fe EMS system?

The Santa Fe EMS system is a priority system in cases of emergency radio communications traffic. Santa Fe Control can assist any EMS provider as needed during an emergency and can dispatch EMS for any area upon request by State Police, Sheriff, or private parties.



Does Albuquerque and Bernalillo County EMS use microwave repeaters?

Albuquerque and Bernalillo County EMS use two state microwave repeaters, which operate on MED 2 and MED 3. These repeaters are used by the system and all hospitals participating in EMSCOM have the capability to communicate on these two channels.



## Frequency range of solar base station EMS

---

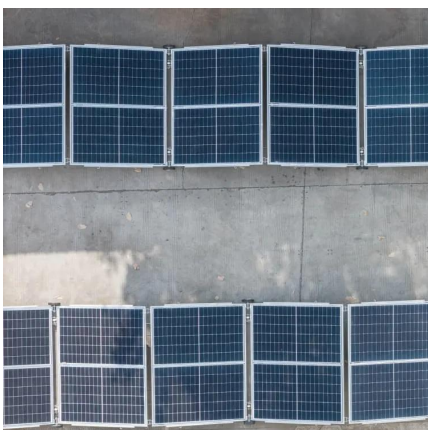


### [Chapter 5 Paramedic Flashcards , Quizlet](#)

Study with Quizlet and memorize flashcards containing terms like Who regulates radio communications in the US, What two types of frequencies do land mobile radios operate on, ...

### [Understanding FFR, FCR-D, FCR-N, and M-FFR: How BESS ...](#)

Explore how battery energy storage systems (BESS) support FFR, FCR-D, FCR-N, and M-FFR services to ensure grid stability with rapid, accurate, and reliable frequency ...



### **What is 5G NR Base Station Types**

Here's a detailed technical explanation of the various 5G NR base station types: 1. Classification by Frequency Range 5G NR base stations are categorized into two main frequency ranges: ...

### [VHF Base Stations for Long-Range Communication](#)

What Is a VHF Base Station? A VHF (Very High Frequency) base station is a fixed



communication device that operates within the 30 MHz to 300 MHz frequency range. Known ...



## EMSCOM

The EMS base station will vary to some degree between health care facilities depending on the manufacturer and the equipment design. In a hospital the base station is usually installed on ...



## [Ambulance Radios: Types And Uses . ShunAuto](#)

Additionally, base stations are designed to transmit at higher power levels, typically ranging from 20 to 50 watts, resulting in a longer transmission ...



## [Ambulance Radios: Types And Uses . ShunAuto](#)

Additionally, base stations are designed to transmit at higher power levels, typically ranging from 20 to 50 watts, resulting in a longer transmission range of approximately 10 to 15 ...





## Design Considerations and Energy Management System for ...

This paper presents the design considerations and optimization of an energy management system (EMS) tailored for telecommunication base stations (BS) powered by



## 10 things you need to consider when it comes to your ...

10 things you need to consider when it comes to your EMS station Be sure to include ample space for sleep, fitness and other critical activities ...

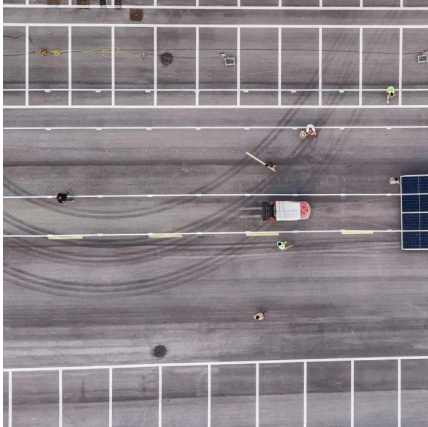
## Emergency Medical Services Radio

In semi-duplex mode the higher frequency of the pair is usually used by the mobile while the lower frequency is used by the base (usually a hospital). Some EMS systems have ...



## [The Best Emergency Radios of 2025 . GearJunkie ...](#)

The 136-174 and 400-520 MHz range is broad enough to receive all of the NOAA stations, AM/FM stations, marine VHF, and local EMS and ...



## Microsoft Word

Sometimes, the base station is operated in the duplex mode, however, in EMS the portable or mobile radio is often operated in the duplex mode, and the base station at the ...



## Azercell Telecom

Azercell operates a large number of radio base stations (RBS), with over 3400 LTE stations across the country. The company has installed more than 300 new base stations and ...

## [How To Listen To Police Radio: Scanner Frequencies ...](#)

How do I find local emergency radio frequencies? Use sites like RadioReference or Digital Frequency Search to find local frequencies. ...





## Multi-objective optimization and algorithmic evaluation for EMS in ...

The EMS manages this transition, ensuring stability in frequency and voltage, while reconfiguring the system to sustain essential loads. Furthermore, the EMS enables demand ...

## Solar Powered Cellular Base Stations: Current Scenario, Issues ...

This article presents an overview of the state-of-the-art in the design and deployment of solar powered cellular base stations.



## Nationwide Public Safety Interoperability

Law enforcement, fire/EMS, medical and general public safety interoperability frequencies. Most states, regions and even cities will have additional frequencies or dedicated ...

## REGIONAL

The range of the frequency spectrum is from VHF Low Band through 800 MHz. Appendix A shows the breakdown of frequencies and tone assignments used for the dispatch and coordination of ...



## Turning Base Transceiver Stations into Scalable and Controllable ...

This paper describes a practical approach to the transformation of Base Transceiver Stations (BTSS) into scalable and controllable DC Microgrids in which an energy management system ...



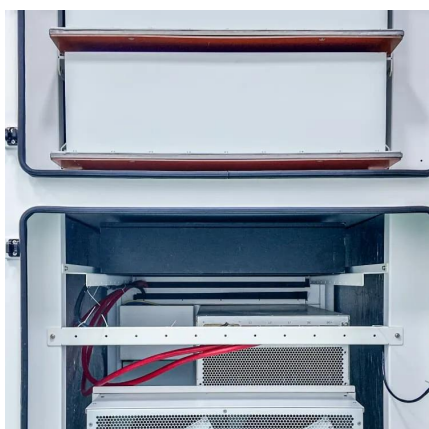
## The Hybrid Solar-RF Energy for Base Transceiver Stations

They are deployed in suitable places having a lot of freely propagating ambient radio frequency (RF) and solar energies. This paper is aimed at converting received ambient ...



## [The Hybrid Solar-RF Energy for Base Transceiver ...](#)

They are deployed in suitable places having a lot of freely propagating ambient radio frequency (RF) and solar energies. This paper is ...





## RADIO FREQUENCY INTERFERENCE BEST PRACTICES ...

To mitigate possible risks to public safety communications, SAFECOM and the National Council of Statewide Interoperability Coordinators (NCSWIC) developed the Radio Frequency ...



## **EMS WIRELESS ANTENNA E01191000598 Cellular Base Station**

...

The EMS Wireless Antenna E01191000598 is a dual-band antenna, supporting both 4G LTE and 3G frequencies. It is designed to work seamlessly with a wide range of cellular base stations ...

## EMS System Communications - georgiaemsacademy

The mobile radio typically has a transmission range of 10 to 15 miles over average terrain (read flat). Very often, the mobile radio will transmit to a repeater (a radio that receives ...



## **Contact Us**

For catalog requests, pricing, or partnerships, please visit:  
<https://bringmethehorizon.eu>