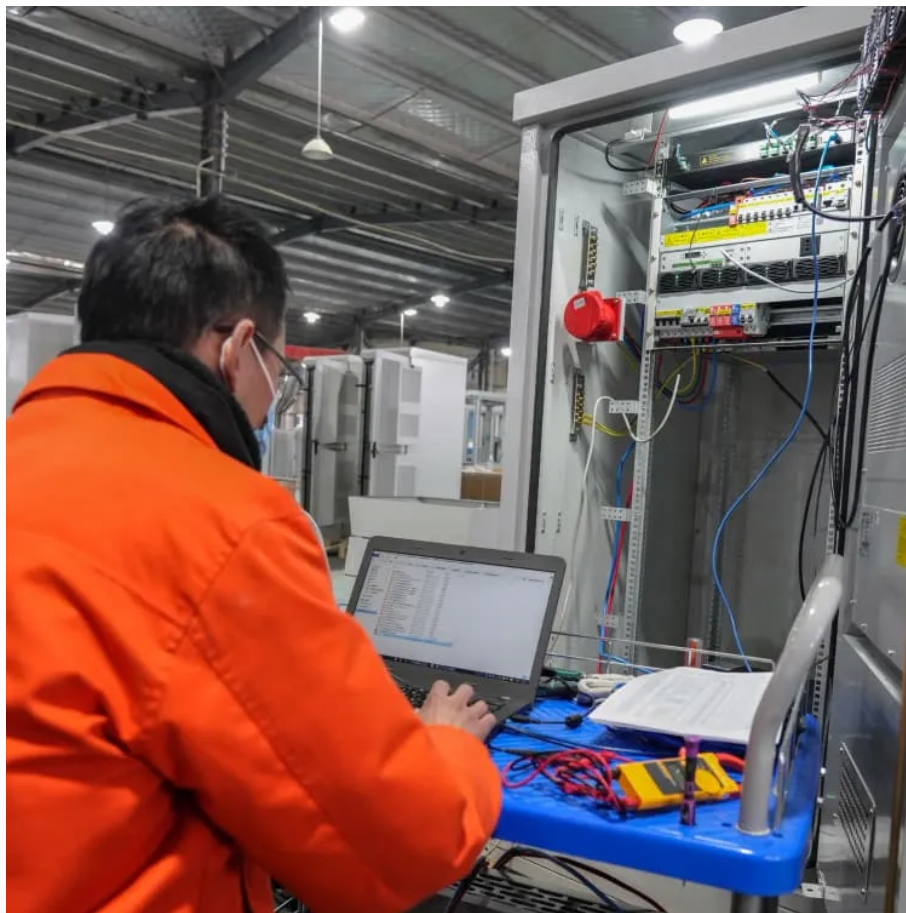




**SolarMax Pro Energy Storage Systems**

## **Does the communication base station use electricity**





## Overview

---

Communication base stations are one of the core nodes of modern communication networks and require uninterrupted power supply to maintain signal coverage and data transmission. What is a communication base station?

Communication base station setups will usually include a wide array of different technologies, including power supplies, data servers, head end, radio repeaters, and communication systems that allow for high-speed continuous information flow. It can also be used as part of a leaky feeder system in the communication network.

What are the components of a base station?

**Power Supply:** The power source provides the electrical energy to base station elements. It often features auxiliary power supply mechanisms that guarantee operation in case of lost or interrupted electricity, during blackouts. **Baseband Processor:** The baseband processor is responsible for the processing of the digital signals.

How does a mobile station communicate with a base station?

The communications between mobile station and base station occur concurrently via two air interface channels from each base station separately. Both channels (signals) are received at the mobile station by maximal combining Rake processing (see Figure 11.20 ). Soft handoff occurs in about 20–40% of calls. Figure 11.20. Soft handoff in CDMA.

Why are base stations important in cellular communication?

Base stations are important in the cellular communication as it facilitate seamless communication between mobile devices and the network communication. The demand for efficient data transmission are increased as we are advancing towards new technologies such as 5G and other data intensive applications.

Why do we need a base station?



Technological advancements: The New technologies result in evolved base stations that support upgrades and enhancements such as 4G, 5G and beyond, its providing faster speeds with better bandwidth. Emergency services: They provide access to emergency services, so that in case of emergency, people can call through their mobile phones.

How does a base station work?

It usually connects the device to other networks or devices through a dedicated high bandwidth wire of fiber optic connection. Base stations typically have a transceiver, capable of sending and receiving wireless signals; Otherwise if they only send the trailer it will be considered a transmitter or broadcast point only.



## Does the communication base station use electricity

---



### Measurements and Modelling of Base Station Power Consumption under Real

The real data in terms of the power consumption and traffic load have been obtained from continuous measurements performed on a fully operated base station site. Measurements ...

### Ground Stations Explained: How Does Satellite Data ...

Why are ground stations so important? Ground stations are the way we remain connected to spacecraft. They are the first port of call for ...



### Optimised configuration of multi-energy systems considering the

By transforming the energy supply of existing communication base stations and alleviating the pressure on the electric load, while including communication operators in the ...



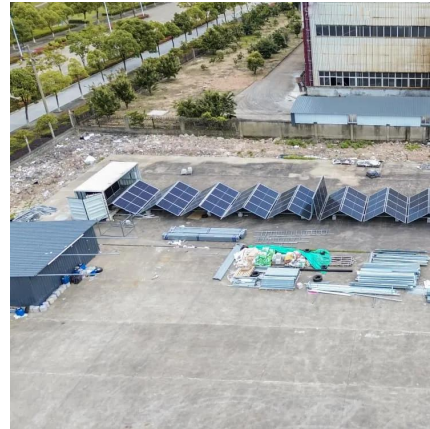
### How Solar Energy Systems are Revolutionizing Communication ...

Energy consumption is a big issue in the operation of communication base stations,





especially in remote areas that are difficult to connect with the traditional power grid, ...



## Key Factors Affecting Power Consumption in Telecom Base Stations

Discover the key factors influencing power consumption in telecom base stations. Optimize energy efficiency and reduce operational costs with our expert insights.

### Why does 5g base station consume so much power ...

In addition to other small modules that use electricity, the power consumption of a single 5G base station is generally around 3700 watts, ...



## Application of smart power usage on the communication base station

Using intelligent power management technology, it can realize intelligent power supply to communication equipment, providing appropriate power supply according to the actual ...



## Communication Base Station Power Consumption & Electricity ...

Calculate the energy consumption and running costs of your Communication Base Station efficiently with our tool. Discover how your 50-watt Communication Base Station impacts your ...



## Multi-objective cooperative optimization of communication base station

This paper develops a method to consider the multi-objective cooperative optimization operation of 5G communication base stations and Active Distribution Network ...

## Application of smart power usage on the ...

Using intelligent power management technology, it can realize intelligent power supply to communication equipment, providing appropriate power supply ...



## Key Factors Affecting Power Consumption in Telecom ...

Discover the key factors influencing power consumption in telecom base stations. Optimize energy efficiency and reduce operational costs with ...



### Space Explained: What is a satellite ground station?

Then comes the 'downlink', when the signal is transmitted from one of our satellites towards a specific ground station. Once the downlink signal has been captured, our ground stations use ...



### **Standardizing a new paradigm in base station architecture**

New antenna-integrated base station architectures were emerging and looking forward, an exciting breakthrough in the feasibility of using millimetre wave technologies was ...

### **Telecommunication base station system working principle and ...**

In communication power supplies, also known as switch rectifiers, they generally provide DC power with a voltage of -48V. After distribution, a voltage of -48VDC can be obtained.







### [What is a base station energy storage power station](#)

A base station energy storage power station refers to a facility designed to store energy generated from various renewable sources and ...

## **Station Communication**

How many communication base stations are needed to cover a city ? This article discusses the factors affecting the number of communication base stations required for a city, including city ...



### [Base Stations - IEEE ComSoc Technology Blog](#)

Selected 5G base stations in China are being powered off every day from 21:00 to next day 9:00 to reduce energy consumption and lower electricity bills. 5G base stations are truly large ...

### [Communication Base Station Energy Solutions](#)

Many remote areas lack access to traditional power grids, yet base stations require 24/7 uninterrupted power supply to maintain stable communication ...





### **What are base station energy storage batteries used for?**

Rapid deployment of emergency communication systems is often needed during disasters. Batteries provide the necessary power to re ...



### **Optimizing the power supply design for communication base stations**

Communication base station power system design scheme When selecting a power system design scheme, it is necessary to consider a variety of factors such as the ...



### **What are base station energy storage batteries used for?**

Rapid deployment of emergency communication systems is often needed during disasters. Batteries provide the necessary power to re-establish communication networks ...





## Basestation

A base station (BS) is defined as a fixed communication facility that manages radio resources for one or more base transceiver stations (BTSs), facilitating radio channel setup, frequency ...

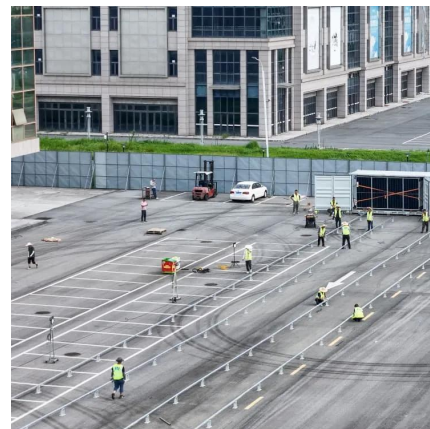


## Energy Storage for Communication Base

The one-stop energy storage system for communication base stations is specially designed for base station energy storage. Users can use the energy storage ...

## Communication Base Station Energy Solutions

Many remote areas lack access to traditional power grids, yet base stations require 24/7 uninterrupted power supply to maintain stable communication services.



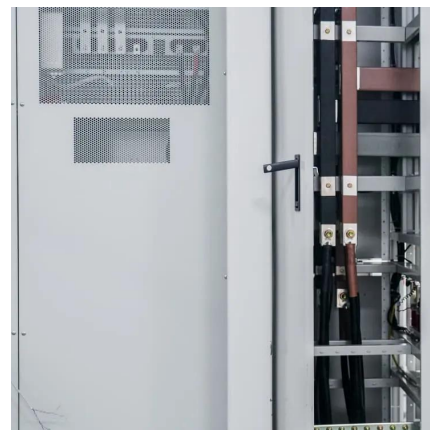
## How Solar Energy Systems are Revolutionizing Communication Base Stations?

Energy consumption is a big issue in the operation of communication base stations, especially in remote areas that are difficult to connect with the traditional power grid, ...



### Communication base station-solar power supply ...

Communication base stations located in remote areas can generally only draw electricity from rural power grids, with poor grid stability, long transmission ...



### **Why does 5g base station consume so much power and how to ...**

In addition to other small modules that use electricity, the power consumption of a single 5G base station is generally around 3700 watts, which is about three times that of 4G ...

### **Communication base station**

Communication base stations are one of the core nodes of modern communication networks and require uninterrupted power supply to maintain signal coverage and data transmission.





## Contact Us

---

For catalog requests, pricing, or partnerships, please visit:  
<https://bringmethehorizon.eu>