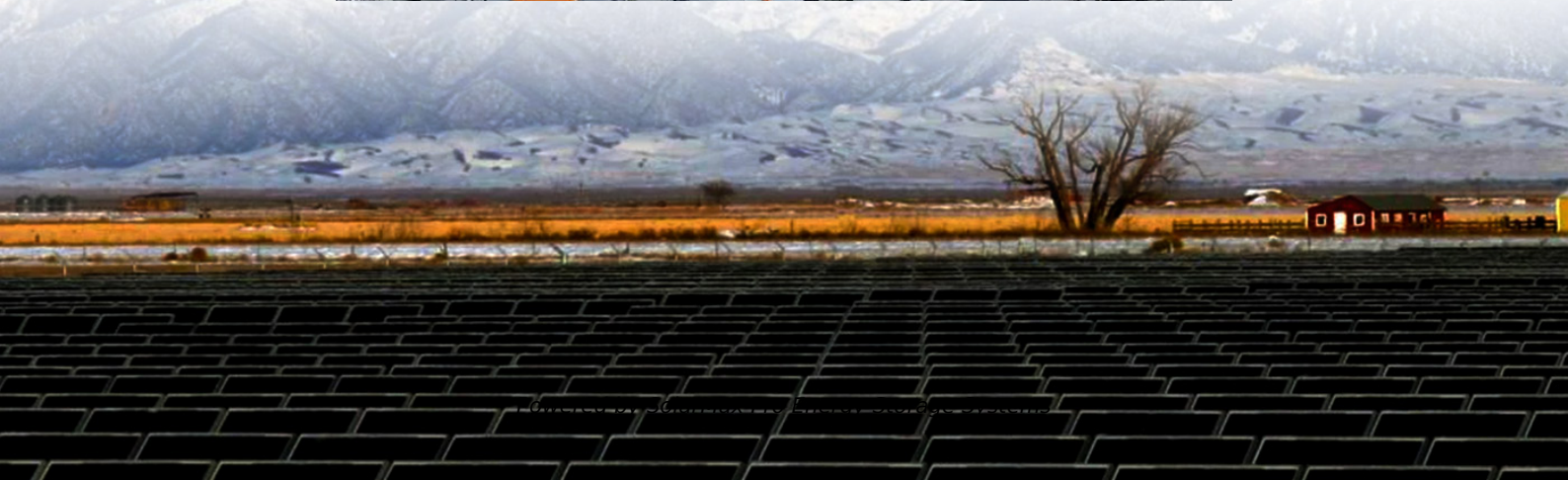
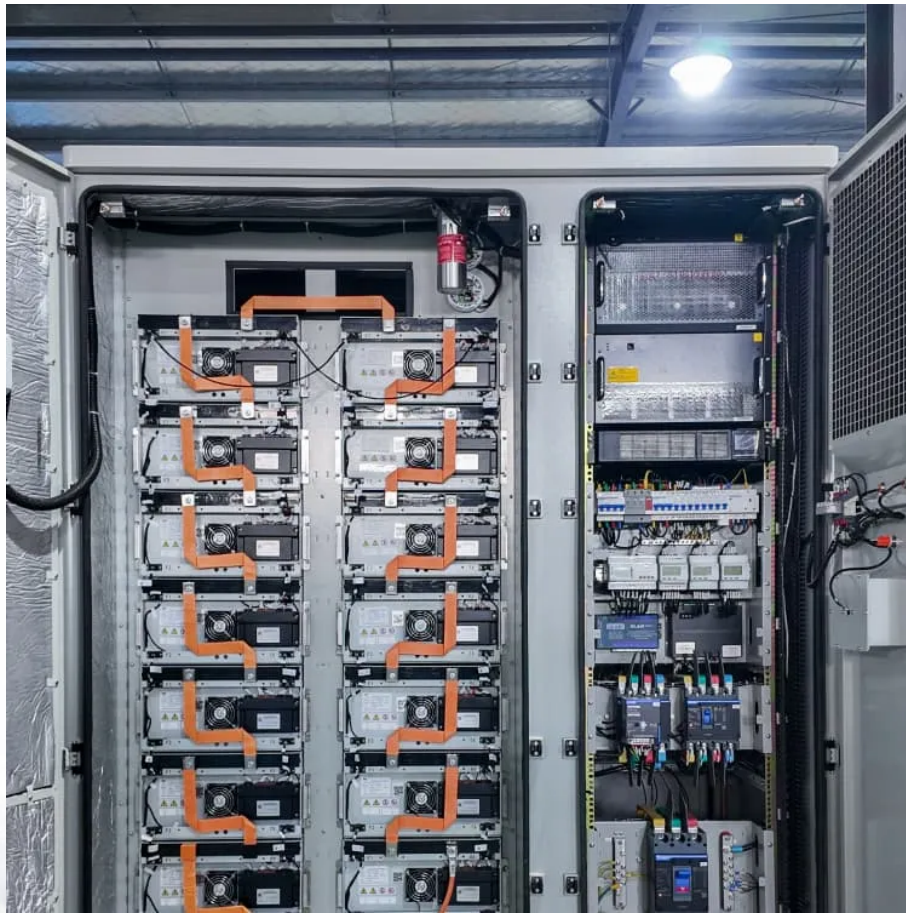




**SolarMax Pro Energy Storage Systems**

# **Does the EMS of communication base stations affect the surrounding areas**





## Overview

---

Are RF EME emitted by mobile phone base stations harmful?

No adverse health effects are expected from continuous exposure to the RF EME emitted by the antennas on mobile phone base stations. ARPANSA will continue to review the research into potential health effects of RF EME emissions from mobile phone base stations and other sources in order to provide accurate and up-to-date advice.

How cellular base stations affect the environment and human body?

All over the world, the electromagnetic pollution produced from cellular base stations erected in residential areas and its effect on the environment and human body is a problem that has been concerning the society for many years.

Are radio base stations harmful?

The WHO states: "From all evidence accumulated so far, no adverse short- or long-term health effects have been shown to occur from the RF signals produced by base stations." (WHO fact sheet "Base stations and wireless technologies") Mobile phones and mobile devices require a network of radio base stations to function.

Are mobile phone base station antennas harmful?

Based on current research there is no established scientific evidence to support exposure to the low-level RF EME from mobile phone base station antennas causes any health effects. An essential part of Australia's mobile phone network, base station antennas can be found on towers and buildings around the populated areas of our country.

Why do mobile phone users need more base stations?

In an area of increasing mobile phone use the number of additional base stations needed to maintain service quality increases, even in areas where



mobile network coverage already exists. If this is not done the mobile network will not operate properly and, as a result, mobile phone users may not be able to connect to their network.

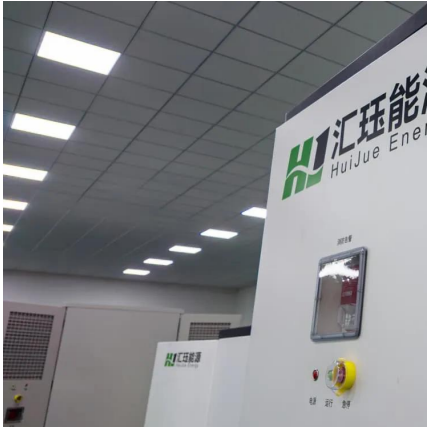
Do base station antennas affect humans?

The effects are radiofrequency sickness, cancer and changes in biochemical parameters. Similar effects from RF by different sources reinforce the conclusions of this review. The objective of this work was to perform a complete review of the existing scientific literature to update the knowledge on the effects of base station antennas on humans.



## Does the EMS of communication base stations affect the surrounding

---



### Human Exposure to Radio Frequency Fields: Guidelines for ...

In urban areas, cell sites commonly emit an ERP of 10 watts per channel or less. For PCS cell sites, even lower ERPs are typical. As with all forms of electromagnetic energy, ...

### Electromagnetic Interference Considerations for Electrical Power

Electromagnetic interference (EMI) is an important consideration for electrical systems and can come from many forms. This chapter discusses some of the common ...



### Base stations and networks

Base station antennas direct the radio signals away from the building or mast to obtain coverage in a certain area. The intensity of the radio waves is drastically reduced as the distance ...

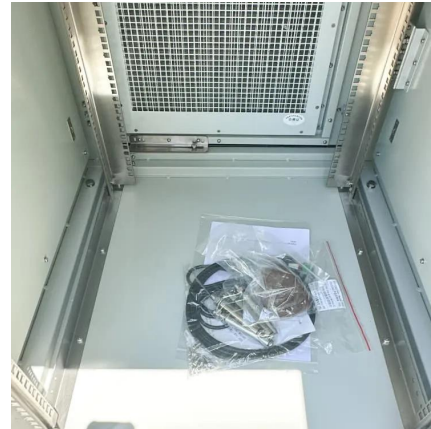
### [Biological effects from exposure to electromagnetic ...](#)

The siting of cellular phone base stations and other cellular infrastructure such as roof-





mounted antenna arrays, especially in residential neighborhoods, is a ...



## Cell Tower Effects on Health and Property Values , AreaHub

Base stations are located either in the centre of each cell or on the corner of a group of cells. The number of base stations required for a given area will depend on the terrain and number of ...

## The Future of EMS & Public Safety Technology in 2025

? As EMS and public safety technology advance in 2025, communication, dispatching, and medical response capabilities will become more efficient and ...



## Environmental Pollution of Cellular Mobile Base ...

The general public through our region is concerned that exposure to electromagnetic fields (EMF) from mobile telephones and their base ...



## Environmental Pollution of Cellular Mobile Base Station in Populated Areas

The general public through our region is concerned that exposure to electromagnetic fields (EMF) from mobile telephones and their base stations could be a ...



## [Mobile phone base stations and health. ARPANSA](#)

An essential part of Australia's mobile phone network, base station antennas can be found on towers and buildings around the populated areas of our country. ...

## Does base station signal radiation really affect health?

Nowadays, mobile communication technology has penetrated into every aspect of social life. Various mobile phone applications have completely changed our lives. As of 2019, China has ...



## [Human Exposure to Radio Frequency Fields: ...](#)

In urban areas, cell sites commonly emit an ERP of 10 watts per channel or less. For PCS cell sites, even lower ERPs are typical. As with all ...



### [Ambulance Radios: Types And Uses , ShunAuto](#)

Base stations In the context of emergency medical services (EMS), base stations play a crucial role in facilitating communication between different ...



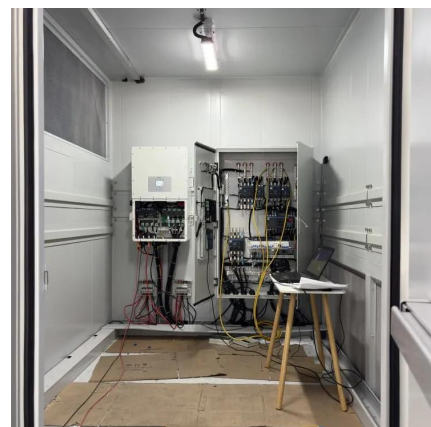
### [Chapter 5 Communication Questions Flashcards , Quizlet](#)

An EMS base station a. generally uses a low output of between 50 and 75 watts of transmission power. b. should be located in a low-lying area, free from potentially damaging high winds. c. ...



### **Cell Tower Effects on Health and Property Values , AreaHub**

The additional cell towers and cellular base stations that will be required to support a 5G network may increase the risk of exposure to high levels of RF radiation.





### Types and Applications of Mobile Communication ...

Mobile communication base station is a form of radio station, which refers to a radio transceiver station that transmits information between mobile ...

## **EMF**

Base stations are located either in the centre of each cell or on the corner of a group of cells. The number of base stations required for a given area will depend on the terrain and number of ...



### Mobile phone base stations and health , ARPANSA

Based on current research there are no established health effects that can be attributed to the low RF EME exposure from mobile phone base station antennas.

## **Effective Communication in EMS Systems: A Comprehensive Guide**

Understanding and utilizing advanced communication systems, adhering to regulations, and practicing effective communication techniques ensure the delivery of high-quality EMS services.





### Mobile phone base stations and health , ARPANSA

Based on current research there are no established health effects that can be attributed to the low RF EME exposure from mobile phone base station ...



### Evidence for a health risk by RF on humans living

The objective of this work was to perform a complete review of the existing scientific literature to update the knowledge on the effects of base station antennas on humans. Studies ...



### **Challenges and Solutions in EMS**

Emergency medical services (EMS) agencies are vital in providing timely medical attention and transportation to people in critical situations. Effective EMS operations are ...



## Base Station EMF Policies

As a response to controversy about the siting of mobile communications base stations, some councils and national authorities have considered the adoption of policies based on arbitrarily ...



## Mobile Phone Base Stations EMF / Health Fact Pack

The consequence of these measures is that in areas around base stations that are accessible to the public, the RF levels are typically many times below international safety limits.

## Contact Us

---

For catalog requests, pricing, or partnerships, please visit:  
<https://bringmethehorizon.eu>