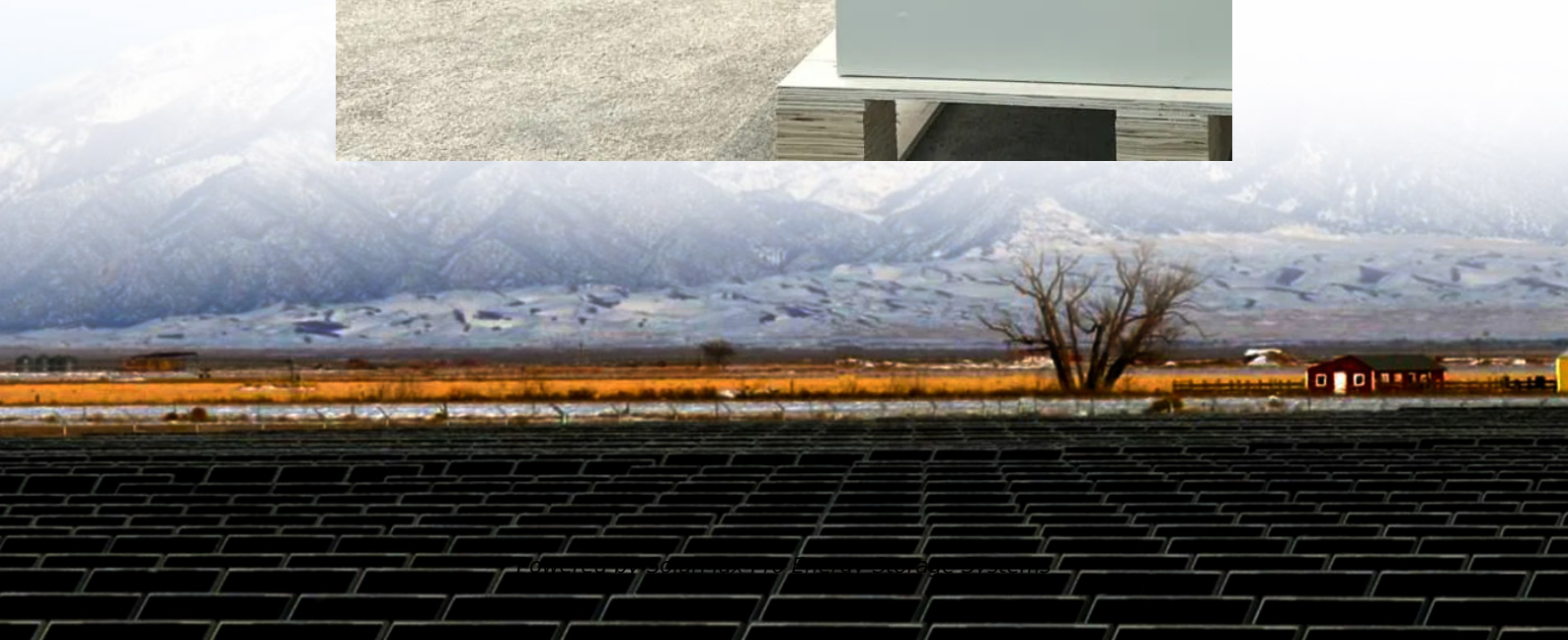




**SolarMax Pro Energy Storage Systems**

# **Does a signal base station belong to the communications business**





## Overview

---

In the area of wireless computer networking, a base station is a radio receiver/transmitter that serves as the hub of the local wireless network, and may also be the gateway between a wired network and the wireless network. It typically consists of a low-power transmitter and wireless router.

Base station (or base radio station, BS) is – according to the 's (ITU) (RR) – a " in the ."A base station is.

In communications, a base station is a communications station installed at a fixed location and used to communicate as part of one of the following:• a system, or;• a .

In the context of external land surveying, a base station is a receiver at an accurately-known fixed location which is used to derive correction information for nearby portable GPS receivers. This correction data allows and other effects to be.

• • • • •

What is a base station in a telecommunications network?

A base station is a critical component in a telecommunications network. A fixed transceiver that acts as the central communication hub for one or more wireless mobile client devices. In the context of cellular networks, it facilitates wireless communication between mobile devices and the core network.

Why are base stations important?

Base stations are the backbone of modern telecommunications networks, providing the essential infrastructure for wireless communication. They enable mobile devices to connect to the network, manage traffic efficiently, and ensure robust and reliable connectivity across wide areas.

What is a signal transmission & reception base station?

Signal Transmission and Reception Base stations use antennas mounted on cell towers to send and receive radio signals to and from mobile devices



within their coverage area. This communication enables users to make voice calls, send texts, and access data services, connecting them to the wider world.

Why are base stations important in cellular communication?

Base stations are important in the cellular communication as it facilitate seamless communication between mobile devices and the network communication. The demand for efficient data transmission are increased as we are advancing towards new technologies such as 5G and other data intensive applications.

How does a base station communicate with a client device?

Generally, if client devices wanted to communicate to each other, they would communicate both directly with the base station and do so by routing all traffic through it for transmission to another device. Base stations in cellular telephone networks are more commonly referred to as cell towers.

How does a base station work?

It usually connects the device to other networks or devices through a dedicated high bandwidth wire of fiber optic connection. Base stations typically have a transceiver, capable of sending and receiving wireless signals; Otherwise if they only send the trailer it will be considered a transmitter or broadcast point only.



## Does a signal base station belong to the communications business

---

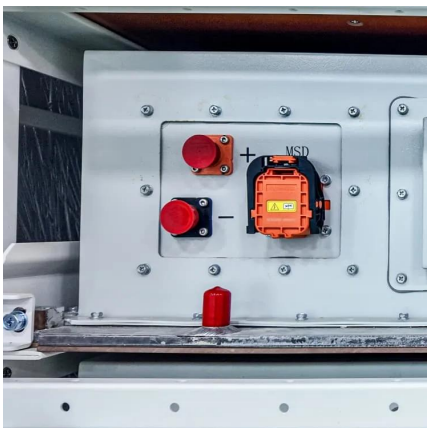


### The Base Station in Wireless Communications: The ...

Base stations are an essential element of wireless communication systems, enabling smooth and stable connections between users and the ...

### What is a Base Station in Telecommunications?

Base stations are the backbone of modern telecommunications networks, providing the essential infrastructure for wireless communication. They enable mobile devices to connect to the ...



### **What Is A Base Station?**

A base station is an integral component of wireless communication networks, serving as a central point that manages the transmission and reception of signals between ...

### Base Stations: The Core and Future of Telecom Networks

A telecom base station, also known as a mobile communication base station, is a wireless



communication device comprised of antennas, transmitters, and controllers.



## Base station

In the area of wireless computer networking, a base station is a radio receiver/transmitter that serves as the hub of the local wireless network, and may also be the gateway between a wired ...



## What is a base station?

A base station serves as a central connection point for a wireless device to communicate. It further connects the device to other networks or devices, usually through ...



## Base Station's Role in Wireless Communication Networks

The base station is the technology within the cell tower that performs the signal processing and communication tasks. Can base stations improve indoor network coverage?

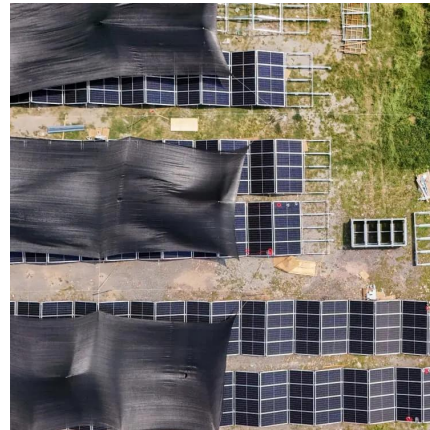






## What Are Base Station Antennas? Complete Guide

Base station antennas play a fundamental role in wireless communication systems by enabling the signal transmission and receival between the base stations and mobile devices.

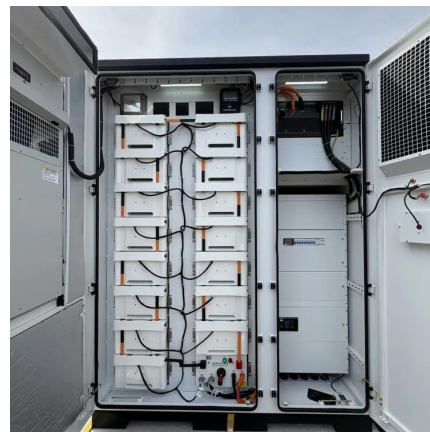


### **Base Station**

Importance A base station is a crucial aspect of communication infrastructure, playing a pivotal role in wireless and cellular communication. It acts as a central hub for the ...

### **Base Station**

A base station is a device that serves as the hub of a wireless communication system. It is typically responsible for transmitting and receiving signals to and from mobile devices, such as ...



### **The Base Station in Wireless Communications: The Key to ...**

Base stations are an essential element of wireless communication systems, enabling smooth and stable connections between users and the telecommunications network.



## Base transceiver station

A base transceiver station (BTS) or a baseband unit[1] (BBU) is a piece of equipment that facilitates wireless communication between user equipment (UE) and a network.



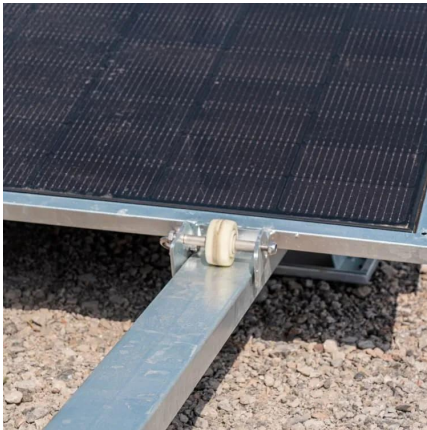
## Choosing the Optimal Channels for Base Stations: A ...

In the world of wireless communication, the choice of channels for base stations plays a critical role in ensuring reliable service, minimizing interference, and optimizing ...

## What Is the Role of a Base Station in Wireless Communication?

Base stations are critical components in wireless communication networks, serving as the intermediary between mobile devices and the core network. They play a vital role in ...





## Base Stations

Base stations form a key part of modern wireless communication networks because they offer some crucial advantages, such as wide coverage, continuous communications and ...

## Base Stations and Cell Towers: The Pillars of Mobile Connectivity

Base stations and cell towers are critical components of cellular communication systems, serving as the infrastructure that supports seamless mobile connectivity.



## What is a Base Station in Telecommunications?

Base stations are the backbone of modern telecommunications networks, providing the essential infrastructure for wireless communication. They enable ...

## Understanding Wireless Base Stations: Definition and ...

A wireless base station is an important component of cellular networks. It serves as a hub that connects mobile devices to the broader ...





## Understanding the Base Station Subsystem: A Comprehensive ...

In the world of mobile telecommunications, understanding the Base Station Subsystem (BSS) is paramount for grasping how our everyday communications function ...



## EMF

A base station is made up of antennas connected by cable to electronic (radio) equipment usually housed in a room or 'shelter'. Some base stations have radio communications dishes (shaped ...



## Base Stations and Cell Towers: The Pillars of Mobile ...

Base stations and cell towers are critical components of cellular communication systems, serving as the infrastructure that supports seamless ...





## Contact Us

---

For catalog requests, pricing, or partnerships, please visit:  
<https://bringmethehorizon.eu>