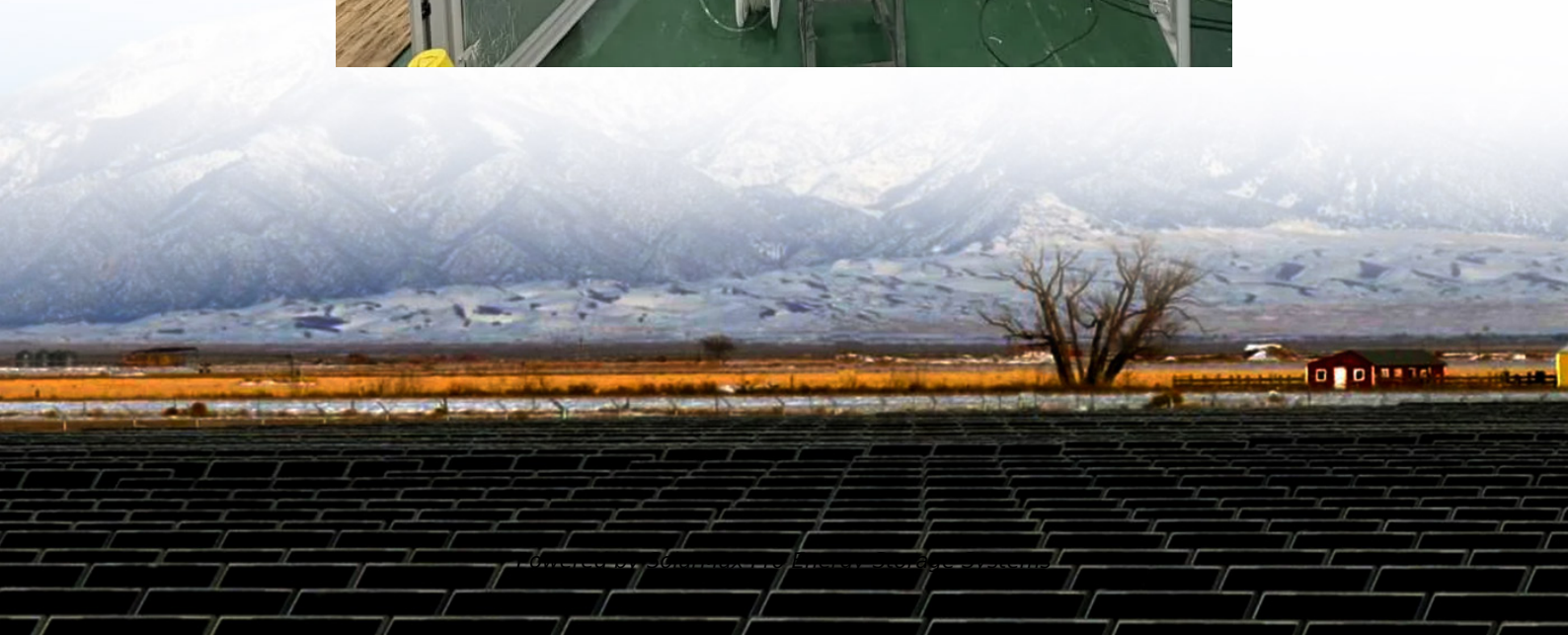




SolarMax Pro Energy Storage Systems

**Do you have a 14 volt lithium
battery pack**





Overview

What is a 14 volt lithium battery?

A 14-volt lithium battery is a rechargeable power source commonly used in power tools, laptops, and other portable devices. It provides stable power output with a lightweight design, making it ideal for high-performance applications. Lightweight and Compact: Easier to carry compared to traditional lead-acid batteries.

What is a 12V lithium battery pack?

Most commonly, a 12V lithium battery pack is made up of four lithium-ion cells, each with a nominal voltage of 3.7V. This configuration allows the pack to reach a total nominal voltage of approximately 14.8V when fully charged and around 12V when discharged.

How many volts does a lithium ion battery need?

Here's how it breaks down by type: Lithium-Ion Cells: Generally, four cells, each with a nominal voltage of 3.6V, are connected in series to achieve 14.4V ($4 \times 3.6V = 14.4V$). Nickel-Based Cells (NiCd, NiMH): With each cell providing 1.2V, a 14.4V NiCd or NiMH battery typically requires 12 cells in series ($12 \times 1.2V = 14.4V$).

What is a 15 volt lithium battery?

A 15-volt lithium battery offers slightly higher voltage, making it ideal for applications requiring additional power. These batteries are often found in high-performance electronics, medical equipment, and industrial tools. Increased Power Output: Provides extra voltage for more demanding applications.

What is a 14.4V battery?

A 14.4V battery is a dependable power source across various applications, from cordless tools to medical devices. By choosing the right type and



following best practices in charging and maintenance, you'll be well-equipped to maximize its lifespan and efficiency.

How many Li-ion cells should a 12V battery pack have?

Recognizing the difference is crucial for applications needing specific voltage outputs. For example, to create a 12V battery pack using standard Li-ion cells, you would need at least four cells in series ($4 \times 3.7V = 14.8V$) to meet the voltage requirement.



Do you have a 14 volt lithium battery pack



Lithium Battery Packs by the Numbers

Lithium Battery Packs by the Numbers What do these numbers mean? Looking at the label of any lithium based battery you will see a set of numbers that tell you what is inside. The first ...

The Ultimate Guide to Lithium Battery Packs

The Ultimate Guide to Lithium Battery Packs-from how they work and key types like lithium-ion to buying tips and maintenance advice. Learn to choose the right battery pack for smartphones, ...



Eight Cell Lithium Pack 14.8 V 6800 mAh, L148A68-8-12-2W

Tech Battery Solutions carries the best slowest discharging, lightest lithium replacement batteries available. These are 100% safe, with an extended service life competed to standard SLA ...

Ultimate Guide to Lithium-Ion Battery Voltage Chart

Lithium-ion battery voltage chart represents the state of charge (SoC) based on different



voltages. This Jackery guide gives a detailed overview of lithium-ion batteries, their ...

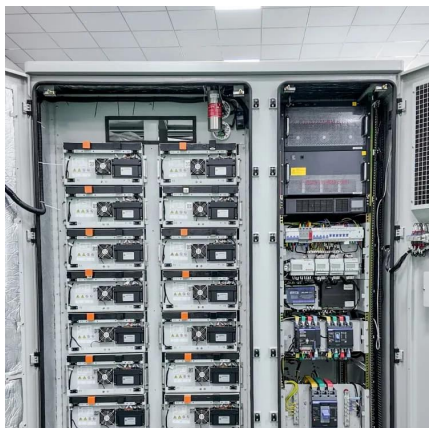
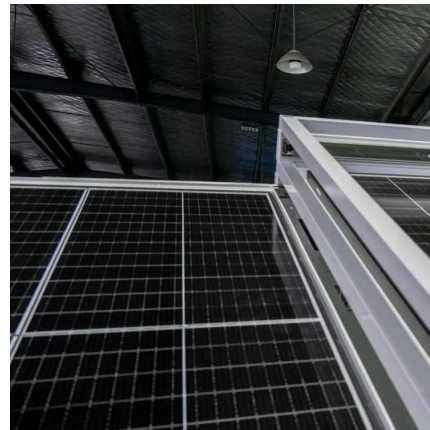


How to Convert Your Golf Cart to a Lithium Battery: A Step-by ...

Are you looking to convert your golf cart to a lithium battery? If so, you're in the right place! This article will provide you with a comprehensive guide on how to do just that. We'll cover ...

Makita USA

For added convenience, the BL1430B battery includes an L.E.D. charge level indicator. The information collected is used to send you newsletters, targeted information regarding Makita ® ...



[What's a 14.4 V Battery? A Simple Guide](#)

If you're looking for a reliable and customizable option, Ufine Battery offers a range of 14.4v batteries tailored to specific needs. They provide high-quality Li-ion, LiPo, and ...



Which battery pack do I need?

I doubt you'll need more than a 14 volt pack unless you're running your trains really fast. I can't speak specifically to the two locos you have, but the NW-2 I'm working on definitely ...



Amazon : XS Power RSV-S6 1000 Amp Lithium Battery with ...

Buy XS Power RSV-S6 1000 Amp Lithium Battery with M6 Terminal Hardware - 14 Volt 20Ah 750CA Deep Cycle LTO Powersports Powercell for Audio Stereo, LED Lighting - 9 ...

Battery Rebuild

Craftsman and Ryobi packs The pricing above includes most battery brands like Dewalt, Milwaukee, Bosch. If you have a brand like Craftsman, Ryobi, or even Harbor Freight the cost is ...



Understanding 14V and 15V Lithium Batteries: A Complete Guide_Battery

If your device is specifically designed for 14V lithium-ion batteries, stick with a 14-volt lithium battery for optimal performance. If you need slightly more power and your device ...



Panasonic CR1632 3.0 Volt Long Lasting Lithium Coin Cell ...

Panasonic CR1632 3.0 Volt Long Lasting Lithium Coin Cell Batteries in Child Resistant, Standards Based Packaging, 2-Battery Pack



How Many Cells in a Lithium Battery Pack? A Complete Guide to ...

Most commonly, a 12V lithium battery pack is made up of four lithium-ion cells, each with a nominal voltage of 3.7V. This configuration allows the pack to reach a total ...

Understanding 14V and 15V Lithium Batteries: A Complete ...

If your device is specifically designed for 14V lithium-ion batteries, stick with a 14-volt lithium battery for optimal performance. If you need slightly more power and your device ...





VIDAR Rechargeable Lithium Ion Battery Pack 14.8V 2200mAh ...

This item: VIDAR Rechargeable Lithium Ion Battery Pack 14.8V 2200mAh High Capacity Li-ion Battery Pack with JST PH2.54/2P Plug-in (Customizable) for Electronics, Lighting, Equipment

Introduction: What Is a Lithium-Ion Battery Pack?

Whether you need a 7.4V, 11.1V, or 14.8V battery pack, understanding their structure, chemistry, and configuration is crucial. In this guide from A&S Power, we'll explain the different types of Li ...



How To Connect Batteries In Series and Parallel

How to wire batteries in series: Connecting batteries in series increases the voltage of a battery pack, but the AH rating (also known as Amp ...



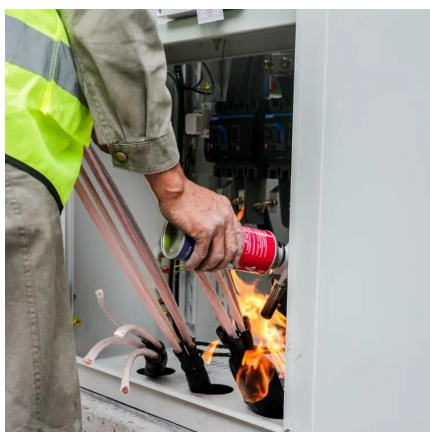
How Do 14.8V Li-Ion Battery Packs Work and Where Are They ...

A 14.8V Li-Ion battery pack combines four 3.7V cells in series (4S configuration) to deliver high energy density and stable power for devices like drones, power tools, and medical ...



48v 14ah Electric Bicycle Lithium (Li-Ion) Battery with ...

Perfectly suited for use with 48 volt, 1000 watt e-bike conversion kits, the 48v 14ah Electric Bicycle Lithium (Li-Ion) Battery with Mounting Rack comes ...



[Charging and Reviving 48V Lithium Batteries: A Guide](#)

To safely charge and revive 48V lithium batteries, you must follow precise protocols, monitor the state of charge, and avoid common mistakes. Use a compatible ...



[Can You Charge Lithium Batteries in Series?](#)

For example, if you have four 3.7 volt LiFePO4 batteries in series, the total voltage of the string will be 14.8 volts ($3.7 \times 4 = 14.8$). If you want to charge this string of batteries, you ...





[Eight Cell Lithium Pack 14.8 V 6800 mAh, L148A68-8 ...](#)

Tech Battery Solutions carries the best slowest discharging, lightest lithium replacement batteries available. These are 100% safe, with an extended ...



Contact Us

For catalog requests, pricing, or partnerships, please visit:
<https://bringmethehorizon.eu>