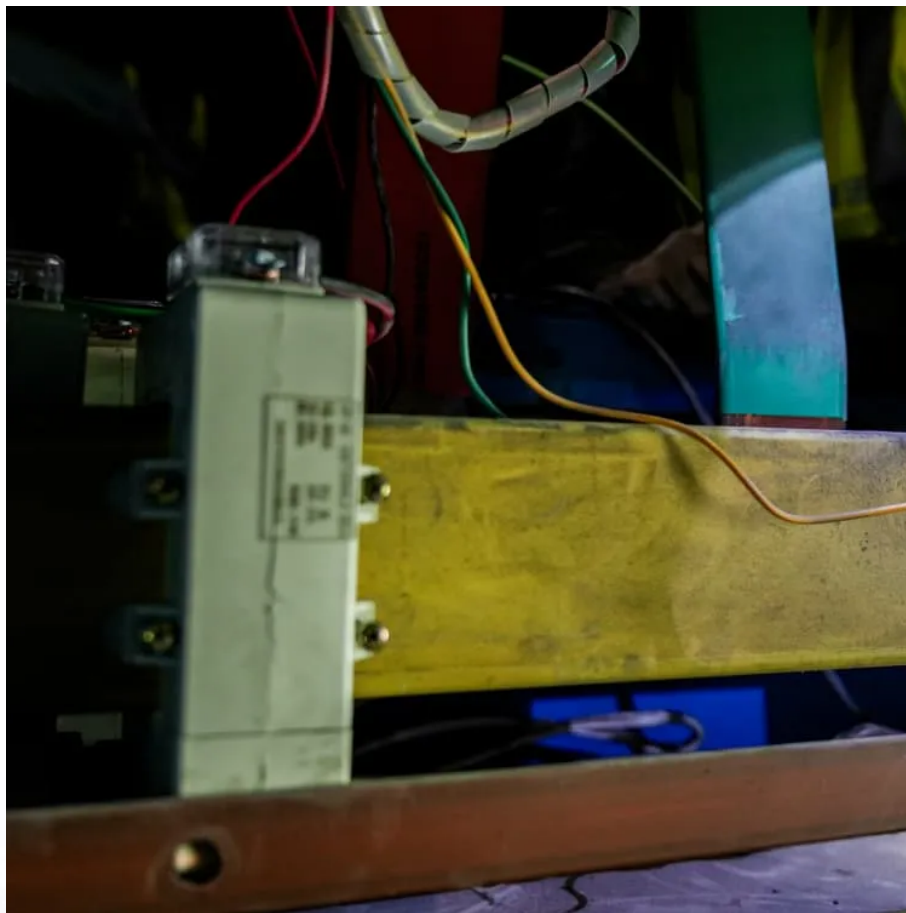




SolarMax Pro Energy Storage Systems

Do solar photovoltaic panels have different directions





Overview

Which direction should solar panels be installed?

South-facing solar panels typically yield the highest energy production, while east-west facing roofs can still be effective. The direction of your solar panels is generally more important than their angle. Most roof tilts will work well, with a few exceptions.

What is the difference between direction and efficiency of solar panels?

Direction refers to the cardinal direction that the solar panels face, whether north, south, east, or west. The angle represents the vertical tilt of the solar panels, measured in degrees from the horizontal. The efficiency represents the ratio of the electrical output to the solar input of the solar panels, expressed as a percentage.

Do solar panels follow the Sun?

Some solar arrays follow the Sun using solar tracking systems which significantly increase energy production. The following sections refer only to 'fixed' or non-tracking systems. In the northern hemisphere, the general rule for solar panel placement is, solar panels should face true south (and in the southern, true north).

Can solar panels be placed in multiple directions?

Combining Directions: Panels can be placed in multiple directions other than just an east/west split. For example, some solar panels could be placed facing north and some facing west. This will result in an output similar to north-west facing panels. But you're not limited to just two directions.

Should solar panels face east or west?

Solar panels that face east or west will produce about 15% less energy than those installed on a south-facing roof. A north-facing roof is the worst direction for solar, as panels will produce around 30% less energy than if they face



south.

How do solar panels work?

Solar panels harness the most power when the rays of the sun hit their surface perpendicularly. Therefore, ensuring that solar panels face the correct direction and have an appropriate tilt helps ensure that they produce maximum energy.



Do solar photovoltaic panels have different directions



The Best Direction for Your Solar Panels

Depending on your home's location and the angle possible for your panels (discussed in further detail below), your installer may recommend having your panels face a ...

Do's and Don'ts When Owning a Solar System in the Philippines

What are the do's and don'ts when it comes to owning a solar system? Do face all of the panels in the same direction if you are using an inverter with only 1 MPPT tracker inverter Do install a ...



Solar Panel Orientation: Does It Really Affect ...

When it comes to solar energy, maximizing efficiency is key to getting the most out of your investment. One of the most significant factors influencing solar ...

Maximize Efficiency: Best Direction for Solar Panels , Sunrun

Learn the best direction for solar panels to optimize energy efficiency and savings. Find



expert advice on positioning your panels for maximum performance.



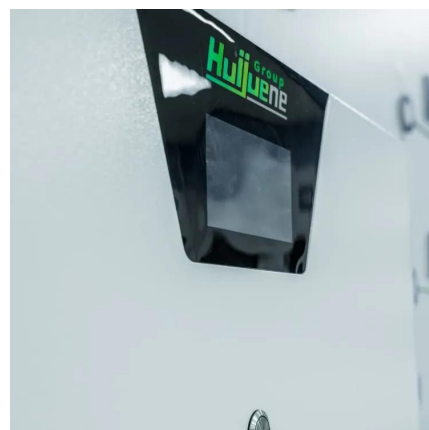
[Maximize Efficiency: Best Direction for Solar Panels](#)

Learn the best direction for solar panels to optimize energy efficiency and savings. Find expert advice on positioning your panels for ...



Optimal Solar Panel Angle: Maximizing Efficiency and Energy ...

South-facing solar panels typically yield the highest energy production, while east-west facing roofs can still be effective. The direction of your solar panels is generally more ...



[Understanding Solar Panel Orientation: A Complete ...](#)

Optimal Directions for Solar Panel Installation To effectively utilize the sun's power, homeowners in the northern hemisphere need to know which ...





[Solar Panel Placement: Best Direction & Orientation ...](#)

Discover the optimal solar panel direction, placement & orientation to maximize energy efficiency. Boost savings with expert tips for an ideal setup!



[Solar Panel Orientation: Everything You Need to Know](#)

Solar panel orientation primarily refers to the placement, direction, and angle of solar panels, representing the direction they face, typically north, south, east, or west.

Combining Solar Panel Strings facing different directions

2.1 Kw Suntech 175 mono, Classic 200, Trace SW 4024 (15 years old but brand new out of sealed factory box Jan. 2015), Bogart Tri-metric, 460 Ah. 24 volt LiFePo4 battery bank. Plenty ...



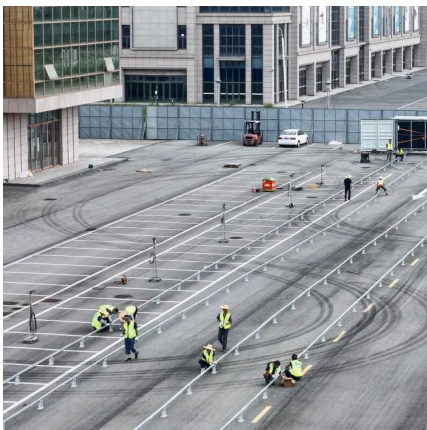
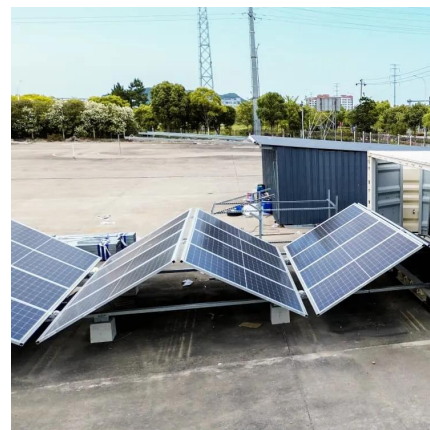
Solar Panel Tilt Angle Calculator

Why Does Tilt Angle Matter? To maximize efficiency and reduce energy costs, you'll want to find the best solar panel tilt angle for your solar power system.



[Which Solar Panel Direction \(Orientation\) Is Best?](#)

Discover which way your solar panels should face for maximum power. Expert advice on which solar module directions work, the orientations that don't and the impact on ...



[Solar Panel Direction & Orientation: 2025 Complete Guide](#)

Discover the optimal direction and angle for solar panels to maximize energy output. Complete guide with calculations, tools, and location-specific recommendations for 2025.

[Maximizing Efficiency: Ideal Directions for Solar Panels](#)

The primary factor influencing the efficiency and energy production of solar panels is their orientation. The direction in which solar panels face plays a pivotal role in determining ...





My installer says it's fine to have different roof orientations on the

If you have panels facing different directions then - as a general rule they should be on separate strings each with their own inverter input (MPPT). Most inverters have 2 inputs. ...

What's the Best Angle for Solar Panels? , EnergySage

South-facing solar panel systems almost always generate the most electricity, but east-west roofs can work well for solar, too. The direction is more important than the angle. ...



Optimal Solar Panel Angle: Maximizing Efficiency and ...

South-facing solar panels typically yield the highest energy production, while east-west facing roofs can still be effective. The direction of ...

Solar panel inclination angle and orientation

The optimal tilt angle of photovoltaic solar panels is that the surface of the solar panel faces the Sun perpendicularly. However, the angle of incidence of solar radiation varies ...



Solar panel orientation

The orientation of a solar panel is important in ensuring its power output is maximized. Some solar panels track the Sun whereas some, like the one above, are fixed in their angle.



Which Solar Panel Direction (Orientation) Is Best?

Solar panels can be installed on roofs that face other directions, but they will produce less energy than if they were pointing south, and it may require you to install more solar panels to meet ...



Solar panel inclination angle and orientation

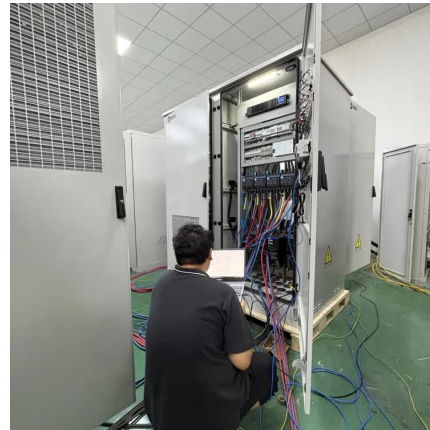
The optimal tilt angle of photovoltaic solar panels is that the surface of the solar panel faces the Sun perpendicularly. However, the angle ...





Solar Panel Placement: Best Direction & Orientation Guide

Discover the optimal solar panel direction, placement & orientation to maximize energy efficiency. Boost savings with expert tips for an ideal setup!



Contact Us

For catalog requests, pricing, or partnerships, please visit:
<https://bringmethehorizon.eu>