



SolarMax Pro Energy Storage Systems

Communications installs 5g base station on the roof





Overview

What were the effects of a 5G base station?

After deployment of 5G base stations close to her living place she developed severe ill health including fatigue, dysesthesia, dizziness, balance disorder, and light sensitivity that all are included in the microwave syndrome. Also her 83 years old husband was affected, although to a minor extent.

Does 5G require more base stations?

Since 5G began its rollout in 2018 or 2019, fifth-generation wireless networks have spread across the globe to cover hundreds of millions of users. But while it offers lower latency than precursor networks, 5G also requires more base stations.

What is a 5G tower?

5G Towers: These are large structures that support multiple sets of equipment from various wireless carriers. They're designed to accommodate antennas, remote radio heads (RRH), and other vital telecom gear. **Small Cells:** Much more compact, small cells typically fit within a volume of 25 cubic feet.

How do 5G towers work?

5G towers operate based on a combination of advanced technologies and principles of wireless communication. Here's a simplified breakdown of how 5G towers work: **Basic Principle:** At the most basic level, 5G towers, like their predecessors, transmit and receive signals using radio waves.

Are cell towers facing a 5G rollout?

Cell towers across different geographies have their drivers and challenges. In many markets, like in India, we see consolidation and mergers, the recent merger of Bharti Infratel and Indus towers and the acquisition of VIOM Networks. However, in other Asia markets like China, their outlook looks robust with 5G rollout happenings.



Why is Japan deploying a new 5G antenna?

Due to a lack of installation spots and the high cost of rolling out 5G networks, carriers in Japan have been sharing mobile infrastructure. Last month the Tokyo-based communications company JTower announced the deployment of the new glass antenna, created in part by glassmaker AGC (one of the world's largest) and the mobile carrier NTT Docomo.



Communications installs 5g base station on the roof



[Rooftop Telecommunication Antennas royalty-free ...](#)

Radiation pollution Cellular network base station antenna on the telecommunication mast for mobile communication on the rooftop of an ...

Case Report: The Microwave Syndrome after Installation of ...

In this case, report two previously healthy persons, a man aged 63 years and a woman aged 62 years, developed symptoms of the microwave syndrome after installation of a 5G base station ...



[5g Cell Phone Tower royalty-free images](#)

Telecommunication tower of 4G and 5G cellular. Macro Base Station. 5G radio network telecommunication equipment with radio modules and smart antennas mounted on a metal ...



Town Planning Statement 5G Electronic Communications ...

8.1 In summary, the application is in respect of a 5G electronic communications base station



necessary to improve a vital network that provides public services.



Rooftop Base Stations & Structure , Murphy Tower

Murphy Tower Service specializes in challenging rooftop installations of wireless communications infrastructure including base station shelters and custom support structures.



The Measurement and Evaluation of the Electromagnetic ...

Background measurement is the measurement of environmental electromagnetic field (EMF) before the installation of 5G base station while the working measurement is the measurement ...



5G Health Effects: 5 Case Reports of Health Symptoms After 5G ...

Case Report 3: A 52-Year Healthy Woman Developed Severe Microwave Syndrome - Shortly After Installation of a 5G Base Station Close to Her Apartment. Lennart ...





5g Installations royalty-free images

Copy space Workers install cellular base station with transmitters 3G, 4G, 5G and antennas on cell tower on background of blue sky. Mobile telecommunication equipments. ...

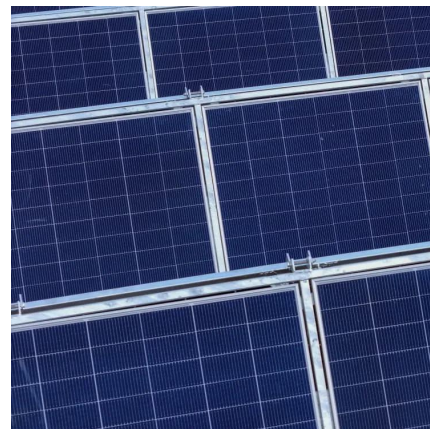


Case Report: Illness After 5G Antennas on Rooftop

In this case, report two previously healthy persons, a man aged 63 years and a woman aged 62 years, developed symptoms of the microwave syndrome after installation of a ...

5G Glass Antenna Turns Windows Into Base Stations

Last month the Tokyo-based communications company JTower announced the deployment of the new glass antenna, created in part by glassmaker AGC (one of the world's ...



5G Health Effects: 5 Case Reports of Health Symptoms After 5G ...

In the fifth case report a 49-year old previously healthy male developed symptoms almost immediately after a 5G base station was installed 20 meters from his apartment across ...



Health Risks Associated With 5G Exposure: A View From the

The deployment of the fifth-generation (5G) wireless communication services requires the installation of 5G next-generation Node-B Base Stations (gNBs) over the territory ...

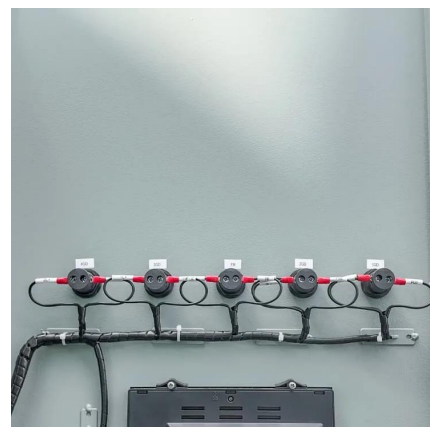


[5G Towers: What are 5G Towers and Who are Top ...](#)

We spotlight their current 5G towers offerings, gauge their support for small cells and DAS solutions in relation to 5G towers, and unravel the ...

Mount Everest, check! At the roof of the world, Huawei installs 5G

Huawei, in collaboration with China Mobile, has officially completed the world's highest 5G base station on Mount Everest at an anxiety-fuelled 6,500 metres above sea level.





World's first transparent 5G antennas turn windows into base stations

Dubbed WAVEANTENNA, it turns ordinary windows into inconspicuous 5G base stations by sandwiching a special transparent conductive material - similar to what's found in ...

The Role of Rooftop Infrastructure for 5G , American ...

Rooftops make it possible for antennas on the 5G network to transmit 5G signals directly to users through a better line of sight in an urban ...



Rooftop Base Stations & Structure , Murphy Tower

Murphy Tower Service specializes in challenging rooftop installations of wireless communications infrastructure including base station shelters and custom ...

The cooling challenges of 5G base stations

From the perspective of thermal design, the base station generates more heat, and the difficulty of temperature control rises sharply. Engineers who have worked in the ...



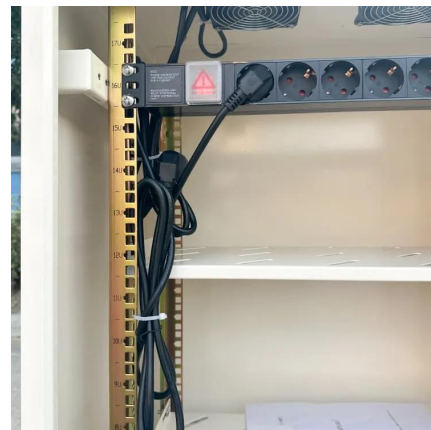
Gsm Roof Stock Photos and Pictures

A view of the antenna base station facility for cellular communication and next-generation 5G high-speed wireless mobile communication of mobile phones on the roof of the building.



Fast Optimization of the Installation Position of 5G-R ...

Because of the wireless communication roof antenna and pantograph arcing located above the roof, and in order to ensure the communication quality, it is difficult to use shielding technology ...



The Measurement and Evaluation of the Electromagnetic ...

Background measurement is the measurement of environmental electromagnetic field (EMF) before the installation of 5G base station while the working measurement is the measurement ...





The Role of Rooftop Infrastructure for 5G , American Tower

Rooftops make it possible for antennas on the 5G network to transmit 5G signals directly to users through a better line of sight in an urban area. In this way, people and devices ...



[5G Towers: What are 5G Towers and Who are Top 5G Tower](#)

We spotlight their current 5G towers offerings, gauge their support for small cells and DAS solutions in relation to 5G towers, and unravel the strategies these major players are ...

[Wireless Base Stations royalty-free images](#)

Base station antenna for mobile communication, made in the form of a 5G symbol. 3D illustration isolated on white background. Flat vector illustration of fifth generation mast base stations on ...



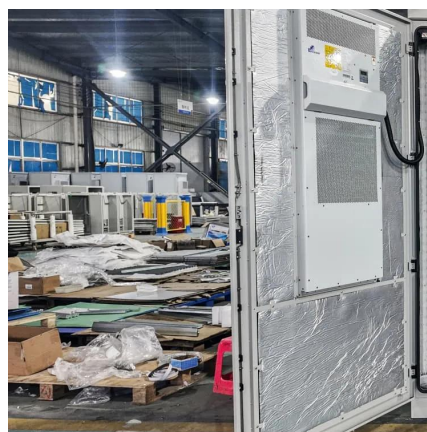
[Case Report: Illness After 5G Antennas on Rooftop](#)

In this case, report two previously healthy persons, a man aged 63 years and a woman aged 62 years, developed symptoms of the microwave ...



What Building Owners Need To Know About 5G Roof Technology

Commercial property owners, rental property managers, real estate developers and even homeowners can contract for the installation of 5G transmitters on the roofs of their ...



Revealing 5G Cell Tower Health Impacts: 7 Scientific Case Studies

In this case, report two previously healthy persons, a man aged 63 years and a woman aged 62 years, developed symptoms of the microwave syndrome after installation of a ...

Contact Us

For catalog requests, pricing, or partnerships, please visit:
<https://bringmethehorizon.eu>