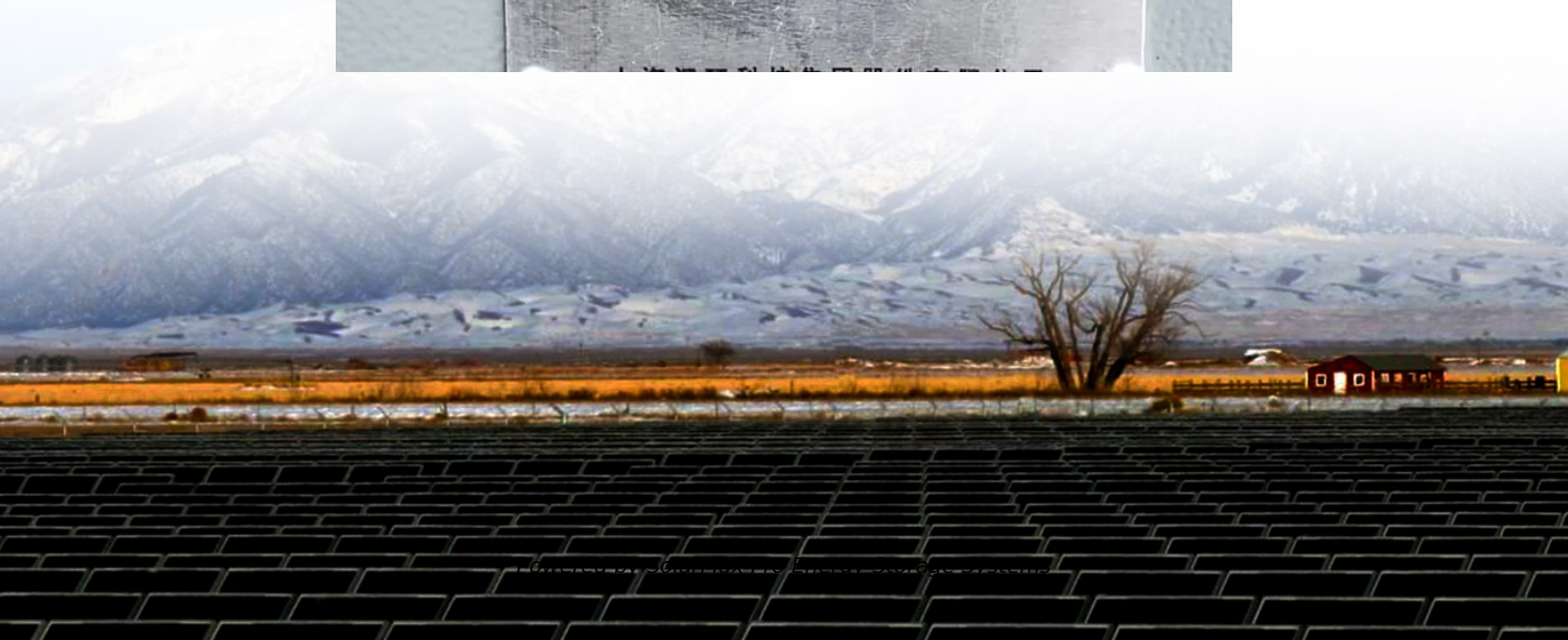




SolarMax Pro Energy Storage Systems

Communication large base station equipment includes





Overview

Base stations are equipped with transmitters and receivers, which help to send and receive radio signals to and from mobile devices. Base stations transmit and receive radio signals over a wide area, ensuring coverage for the devices within the range. What is a base station in a telecommunications network?

A base station is a critical component in a telecommunications network. A fixed transceiver that acts as the central communication hub for one or more wireless mobile client devices. In the context of cellular networks, it facilitates wireless communication between mobile devices and the core network.

How many types of base stations are there?

Macro cell, Micro cell, Pico cell and Femto cell are 4 types of base stations in wireless communication networks. Macrocell antennas must be properly mounted on ground-based masts, rooftops or other existing structures and at heights for an unhindered, clear view of the surroundings.

What does a base station do?

It serves as the central hub that connects multiple user devices (such as radios, mobile phones, or IoT devices) to a network, enabling long-range communication. Base stations are equipped with transmitters and receivers, which help to send and receive radio signals to and from mobile devices.

What equipment does a base station need?

Control Equipment: Base stations include control equipment that manages the communication protocols and coordinates the interaction between mobile devices and the network. This equipment ensures that data is routed correctly and efficiently. **Power Supply:** A reliable power supply is essential for the continuous operation of a base station.

What is a base station & support structure?



Base Station: Houses the radio transceivers and other equipment necessary for facilitating wireless communication between the tower and mobile devices.

Support Structure: Provides the necessary height and stability to maximize coverage and signal strength. This can be a lattice tower, monopole, or guyed tower.

How does a base station communicate with a client device?

Generally, if client devices wanted to communicate to each other, they would communicate both directly with the base station and do so by routing all traffic through it for transmission to another device. Base stations in cellular telephone networks are more commonly referred to as cell towers.



Communication large base station equipment includes

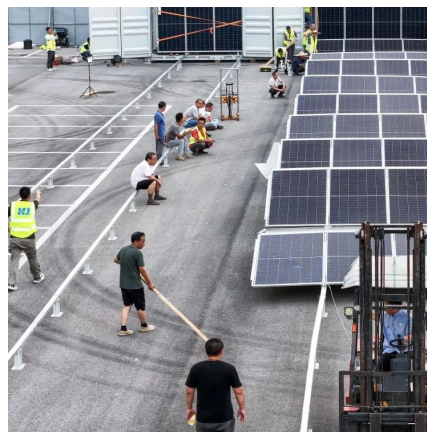


The Base Station in Wireless Communications: The Key to ...

Equipped with an electromagnetic wave antenna, often placed on a tall mast, the base station enables communication between mobile terminals (such as mobile phones or ...

Understanding Macro Towers: The Backbone of Wireless ...

Macro towers play an indispensable role in the infrastructure of wireless communications, enabling the vast reach and mobility that modern telecommunication users expect.



10 Best Base Station HAM Radios for Maximum ...

HAM radios are a popular tool for communication enthusiasts. Unlike regular radios, they allow two-way communication over long distances. ...



How Solar Energy Systems are Revolutionizing Communication Base Stations?

Energy consumption is a big issue in the



operation of communication base stations, especially in remote areas that are difficult to connect with the traditional power grid, ...



What Is A Base Station?

A base station is a piece of equipment that facilitates wireless communication between devices and a network. It contains the necessary hardware and software to transmit ...

Cellular Networks 101: A Beginner's Guide

Base Station and Cell Tower Infrastructure Base stations are the critical infrastructure that enables cellular communication. They are typically mounted on cell towers, ...



Radio Base Stations for Secure Communication

Discover BelFone's advanced radio base stations designed for reliable, scalable, and secure communication. Perfect for public safety, industrial, and enterprise use, BelFone's solutions ...



5g base station architecture

5G (fifth generation) base station architecture is designed to provide high-speed, low-latency, and massive connectivity to a wide range of devices. The architecture is more ...



[What Are Base Station Antennas? Complete Guide](#)

This article will provide a thorough outlook on base station antennas from working principles, applications, installation and maintenance ...

Types and Applications of Mobile Communication Base Stations

It is mainly composed of antennas, RF duplexers, low noise amplifiers, mixers, electrically adjustable attenuators, filters, power amplifiers and other components or modules, ...



What is a base station?

A base station will have one or more radio frequency (RF) antennas to transmit and receive RF signals to other devices. Base stations are also central points that all clients ...



[Cellular Networks, Base Stations, and 5G RAN](#)

A user's mobile telephone communicates through the air with an base station antenna, which in turn links to the central exchange of the operator - a computer. This routes ...



[Top 5 CB Base Stations: Your Ultimate Buying Guide](#)

We'll break down what makes a good CB base station, explain the key features you should look for, and even offer some tips to help you find the perfect match for your ...

Communication Base Station Equipment Rigid PCB Market's ...

The increasing adoption of advanced communication technologies, particularly in densely populated urban areas and developing economies, is a key driver. Furthermore, the ...





[What is a Base Station in Telecommunications?](#)

Discover the role and functionality of a base station in telecommunications networks. Learn how these critical components manage communication between mobile devices and the network, ...

[The Base Station in Wireless Communications: The ...](#)

Equipped with an electromagnetic wave antenna, often placed on a tall mast, the base station enables communication between mobile terminals ...



[Types and Applications of Mobile Communication ...](#)

It is mainly composed of antennas, RF duplexers, low noise amplifiers, mixers, electrically adjustable attenuators, filters, power amplifiers ...

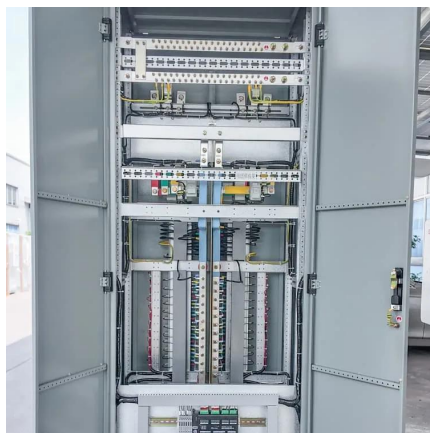
[What Are Base Station Antennas? Complete Guide](#)

This article will provide a thorough outlook on base station antennas from working principles, applications, installation and maintenance details and everything in between.



Communication Base Station Management

The base station includes various devices for wireless communication, power supply equipment used, and various auxiliary equipment. With the continuous ...



What is a Base Station in Telecommunications?

Discover the role and functionality of a base station in telecommunications networks. Learn how these critical components manage communication ...



10 Best Ham Radio Base Station For Long Range Communication

In this article, we have described details of different Ham radio base station that will help you to select the best one based on your needs.





What is Base Station?

Nowadays, networking has become a crucial part of our daily lives. To implement network services for users, base station plays an essential role to constitute a ...



Contact Us

For catalog requests, pricing, or partnerships, please visit:
<https://bringmethehorizon.eu>