



**SolarMax Pro Energy Storage Systems**

# **Communication base station wind and solar complementary photovoltaic fee**





## Communication base station wind and solar complementary photov



### Power supply and energy storage scheme for 20kw125kwh ...

Base station power supply wind solar complementary vanadium energy storage system realizes the complementarity of photovoltaic, wind power, energy storage and diesel / oil power ...

### Oulu Solar photovoltaic system supply power to Mongolia Communication

the wind solar complementary power supply system of communication base station is composed of wind turbine generator, solar cell module, communication integrated control ...



### [Wind-solar-storage complementary communication ...](#)

A technology for communication base stations and energy-saving systems, applied in the field of energy-saving systems for wind-solar storage ...

### [A wind-solar complementary communication base ...](#)

In this embodiment, the solar power generation equipment and the wind power generation

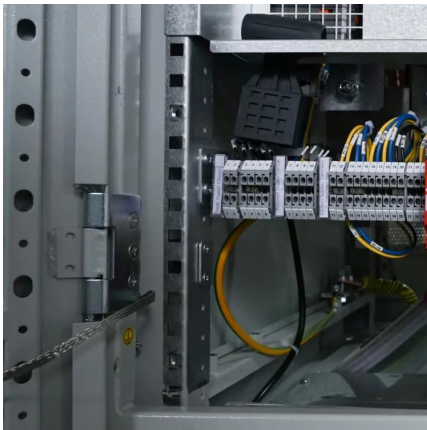


equipment are used to complement each other to provide stable ...



### **solar power for Base station**

For example, installing a system composed of multiple high-efficiency solar panels, equipped with smart controllers and high-performance batteries, enables the base station to ...



### **Application of wind solar complementary power generation ...**

To solve the problem of long-term stable and reliable power supply, we can only rely on local natural resources. As inexhaustible renewable resources, solar energy and wind ...



### **Telecom Base Station PV Power Generation System Solution**

The communication base station installs solar panels outdoors, and adds MPPT solar controllers and other equipment in the computer room. The power generated by solar energy is used by ...





## How to make wind solar hybrid systems for telecom stations?

Then, the application of wind solar hybrid systems to generate electricity at communication base stations can effectively improve the comprehensive utilization of wind and solar energy.



## Evaluating wind and solar complementarity in China: Considering ...

Changes in wind and solar energy due to climate change may reduce their complementarity, thus affecting the stable power supply of the power system. This paper ...

## Communication base station power station based on wind-solar

A wind-solar hybrid and power station technology, applied in the field of communication, can solve problems such as the difficulty of power supply for communication base stations, and achieve ...



## [Communication Base Station Solar Photovoltaic Co Ltd](#)

Solar energy communication base station is a kind of communication base station powered by photovoltaic power generation technology. This kind of base station is very reliable, safe and ...



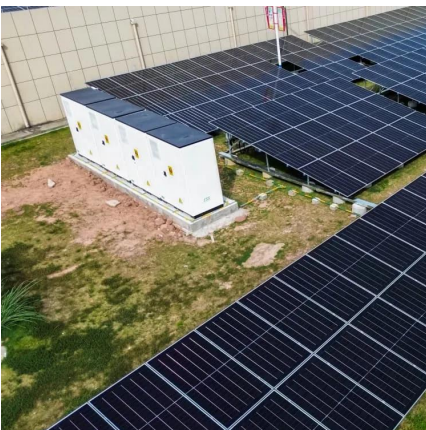
## Bundesnetzagentur

The provisional price lists published by electricity network operators for 2025 show that network tariffs in areas with strong growth in wind and solar power will be lower.



## [Cellular Base Station , Solar Power Solution , HT SOLAR](#)

Construction costs for alternative energy sources such as solar and wind power are significantly lower than traditional power transmission and distribution from the power grid, resulting in ...



## [Communication base station solar panel wholesale](#)

In this paper we study the use of solar energy to power an energy-efficient LTE macro base station. By coupling a photovoltaic (PV) solar panel with batteries that can store the energy ...





## Multi-timescale scheduling optimization of cascade hydro-solar

Shen J., Wang Y., Cheng C., Li X., Miao S. (2022) Research status and prospect of generation scheduling for complementary system hydropower-wind-solar energy, Proc. CSEE42, 11, ...

## Benefit compensation of hydropower-wind-photovoltaic complementary

Further, based on the model group for quantifying contributions and the compensation electricity contribution value, this paper proposes the benefit compensation ...



## Wind-solar complementary communication base ...

A communication base station, wind and solar complementary technology, applied in the field of new energy base stations, can solve problems such as ...

## Communication Base Station Energy Power Supply System

The wind-solar-diesel hybrid power supply system of the communication base station is composed of a wind turbine, a solar cell module, an integrated controller for hybrid energy ...



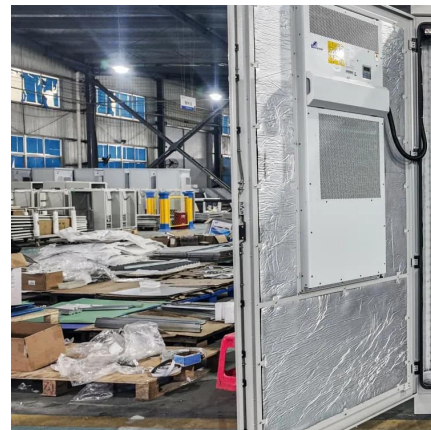
## Power supply and energy storage scheme for 20kw125kwh communication

Base station power supply wind solar complementary vanadium energy storage system realizes the complementarity of photovoltaic, wind power, energy storage and diesel / oil power ...



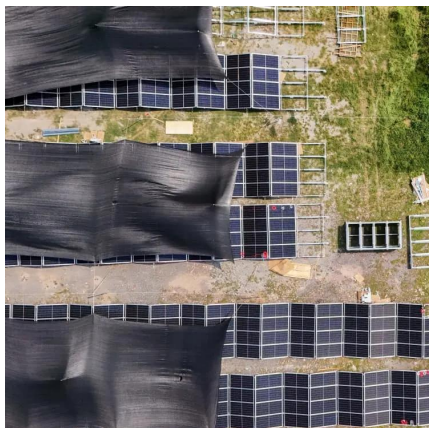
## Introduction of wind solar complementary power supply system for

The wind solar complementary power supply system of communication base station is composed of wind turbine generator, solar cell module, communication integrated ...



## CN106050571A

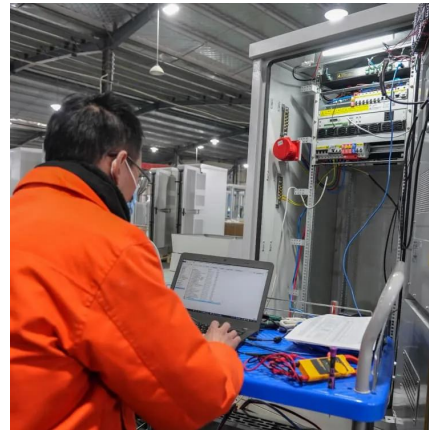
The comprehensive energy supply system is composed of a wind energy conversion system, a solar photovoltaic system, a miniature compressed air energy storage system, a refrigerating ...





## Variation-based complementarity assessment between wind and solar

The southwest region has abundant hydropower resources, but the limited production efficiency and complementarity of wind and solar energy may restrict the scale of ...



## Hebei Customized off-grid photovoltaic power supply system solar

Hebei Customized off-grid photovoltaic power supply system solar communication base station outdoor wind and solar complementary solar photovoltaic power generation

## A wind-solar complementary communication base station power

...

In this embodiment, the solar power generation equipment and the wind power generation equipment are used to complement each other to provide stable power for the communication ...



## Contact Us

For catalog requests, pricing, or partnerships, please visit:  
<https://bringmethehorizon.eu>