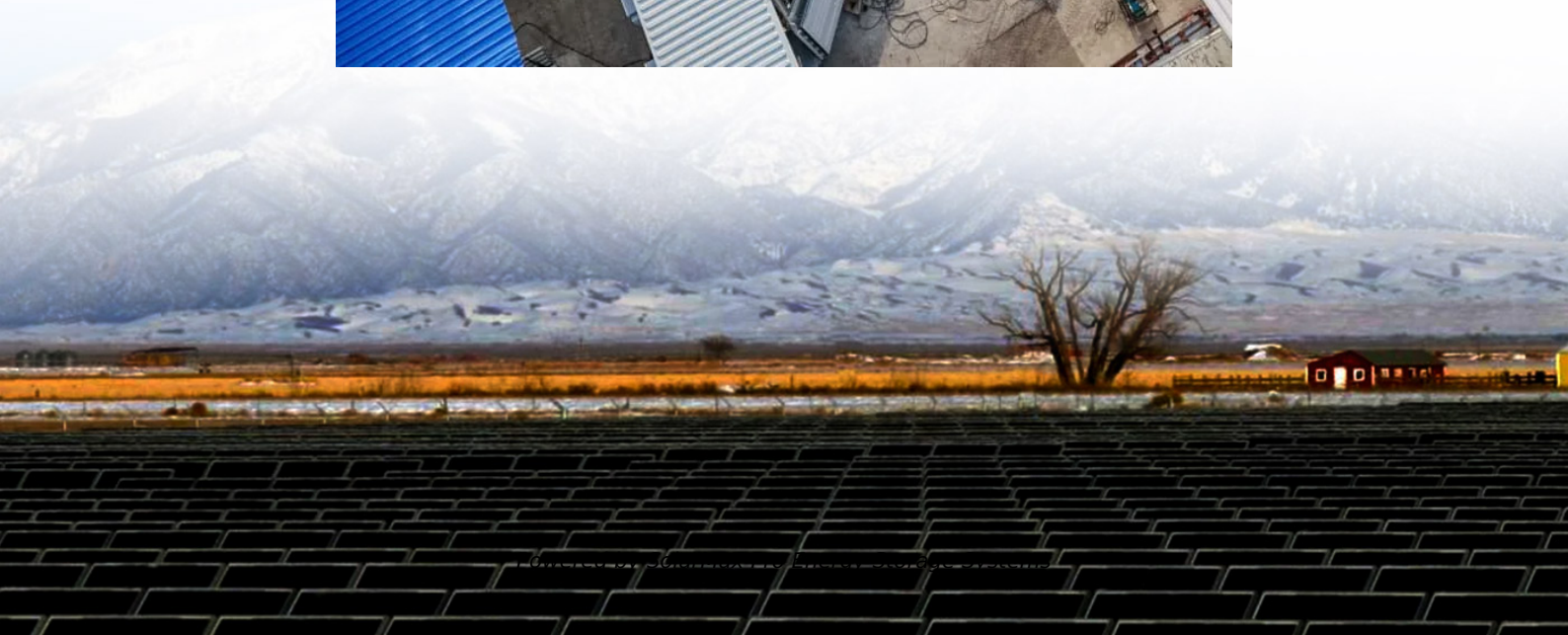




SolarMax Pro Energy Storage Systems

Communication base station inverter management fee





Communication base station inverter management fee



E3. What you should know about PACE Communications Base Stations.

PACE communication base station solution covers 50-200 ampere current, supports 5-20 ampere charging current limit, and supports up to 64 sets of batteries in parallel to meet diverse needs.

Communication Base Station Energy Solutions

The Importance of Energy Storage Systems for Communication Base Station With the expansion of global communication networks, especially the advancement of 4G and 5G, remote ...



Communication Base Station Cost Optimization: Navigating the ...

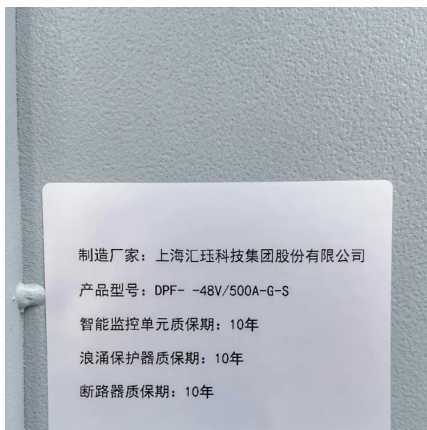
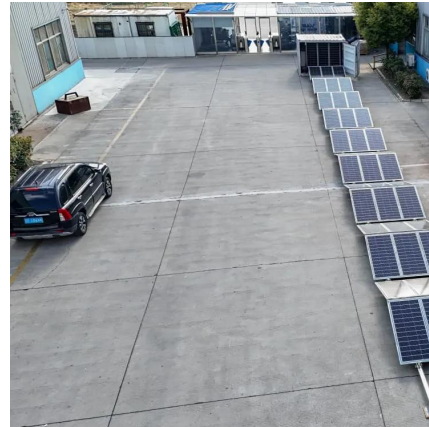
Their base station deployment optimization approach combined Open RAN architecture with solar-diesel hybrid systems, slashing energy costs by 60% in rural installations.

Resource management in cellular base stations powered by ...

This paper aims to consolidate the work carried out in making base station (BS) green and



energy efficient by integrating renewable energy sources (RES). Clean and green ...

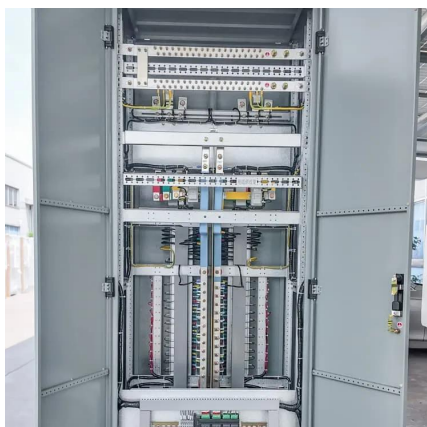


What is the cost of building and maintaining a communication base station

In conclusion, building and maintaining a communication base station involves significant initial setup costs and ongoing maintenance expenses. These costs can vary widely depending on ...

Communication Base Station Energy Solutions

Due to harsh climate conditions and the absence of on-site personnel to maintain fuel generators, the company required a reliable solution to ensure the base station's stable operation and ...



Communication Base Station-Infrastructure-ENERGROWTH ...

A smart solution for a communication base station integrates advanced technologies to optimize performance, energy efficiency, and reliability.



????

RTU (Remote Terminal Unit) plays a key role in energy management and optimal configuration in the integrated telecom base station solution. Its main work is to intelligently dispatch and ...



Communication Base Station Energy Management , Huijue ...

As global mobile data traffic approaches 1,000 exabytes monthly, communication base station energy management emerges as the linchpin balancing digital transformation and climate action.



Optimal configuration of 5G base station energy storage ...

The high-energy consumption and high construction density of 5G base stations have greatly increased the demand for backup energy storage batteries. To maximize overall ...



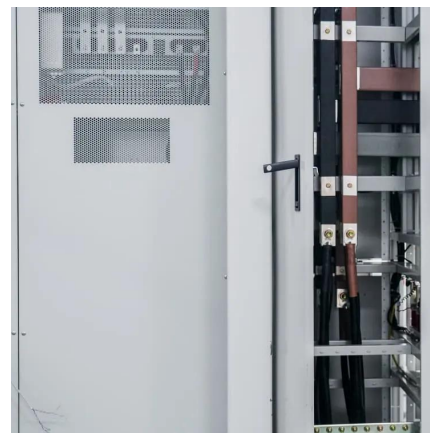
Base Stations and Cell Towers: The Pillars of Mobile ...

Base stations and cell towers are critical components of cellular communication systems, serving as the infrastructure that supports seamless ...



Communication Base Station Cost Benefit: Navigating the ...

As global 5G deployments accelerate, operators face a critical dilemma: How can they optimize communication base station cost-benefit ratios while meeting escalating connectivity demands?

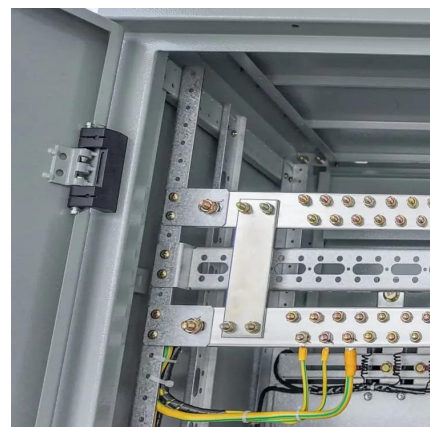


What is the cost of building and maintaining a communication ...

In conclusion, building and maintaining a communication base station involves significant initial setup costs and ongoing maintenance expenses. These costs can vary widely depending on ...

[Communication Base Station Energy Power Supply System](#)

The wind-solar-diesel hybrid power supply system of the communication base station is composed of a wind turbine, a solar cell module, an integrated controller for hybrid energy ...





Communication Base Station Lifecycle Cost , Huijue Group E-Site

As global 5G deployments accelerate, the communication base station lifecycle cost has emerged as a critical bottleneck. Did you know operators spend 65% more on maintaining 4G/5G hybrid ...

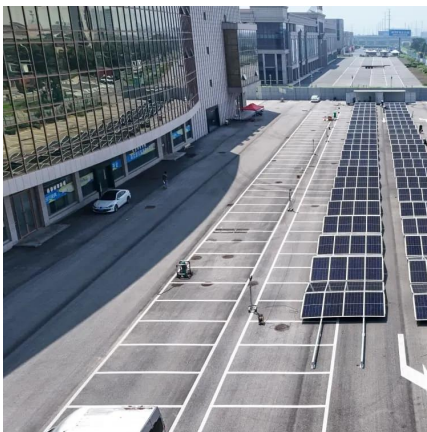
[10 applications of inverter and the communication ...](#)

This article will introduce the 10 applications of inverter, such as solar power systems, outdoor lighting, electric vehicles, etc., and the ...



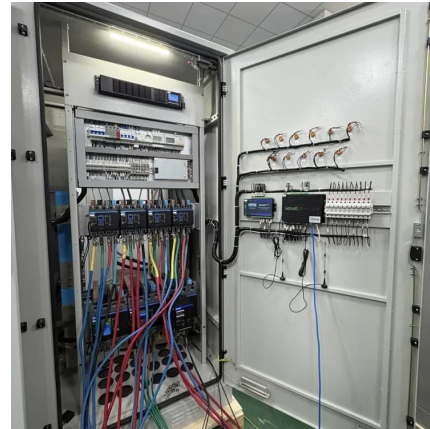
Communication Base Station TCO Analysis , Huijue Group E-Site

As global 5G adoption accelerates, communication base station total cost of ownership (TCO) has emerged as the elephant in the server room. Did you know operational expenses account for ...



The Future of Hybrid Inverters in 5G Communication Base Stations

Modern hybrid inverter systems support remote diagnostics and real-time energy monitoring, aligning perfectly with the needs of decentralized telecom networks. This means ...



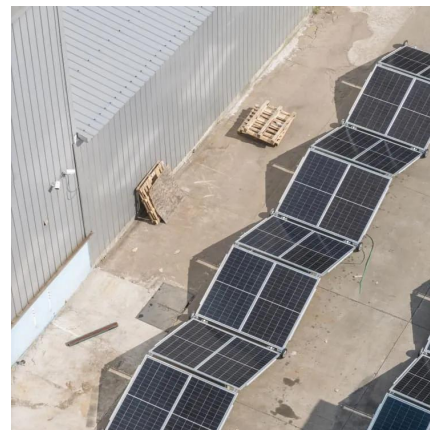
Communication Power Inverter Base Station Inverter

The LCD rackmount Power Supply Pure Sine Wave Inverter from Communication Power Inverter NASN Factory is a new generation of intelligent MCU high ...



Large-scale Outdoor Communication Base Station

Discover the Large-scale Outdoor Communication Base Station, designed for smart cities, communication networks, and power systems. Integrated with ...



Communication Base Station Energy Solutions

Due to harsh climate conditions and the absence of on-site personnel to maintain fuel generators, the company required a reliable solution to ensure the base ...





Wireless & Fixed Telephone Networks Questions & Answers

Answer: b Explanation: To provide wireless communication within a particular geographic region, an integrated network of base stations must be deployed to provide sufficient radio coverage ...



Contact Us

For catalog requests, pricing, or partnerships, please visit:
<https://bringmethehorizon.eu>