



**SolarMax Pro Energy Storage Systems**

# **Classification of communication equipment base stations**





## Overview

---

Base station (or base radio station, BS) is – according to the 's (ITU) (RR) – a " in the ." A base station is called in , in ( ), and in . The term is used in the context of ,



## Classification of communication equipment base stations

---



### Types and Applications of Mobile Communication Base Stations

In terms of form, future base stations will develop in three directions: macro base stations with higher performance and integration, micro base stations with smaller size, and ...

### Types and Applications of Mobile Communication ...

In terms of form, future base stations will develop in three directions: macro base stations with higher performance and integration, micro ...



### Base Station System Structure

The intent of this section is to explore the role of base stations in communications systems, and to develop a reference model that can be used to describe and compare base station software ...

### Base station

Base station (or base radio station, BS) is - according to the International Telecommunication Union 's (ITU) Radio



Regulations (RR) [1] - a "land station in the land mobile service." A base ...



## Key Mobile Network Equipment and Functions

Key Mobile Network Equipment 1. Base Transceiver Station (BTS) / Node B / eNodeB / gNodeB A Base Transceiver Station (BTS) is a critical piece of equipment in a mobile network, ...

## Base station

OverviewLand surveyingComputer networkingWireless communicationsSee also

Base station (or base radio station, BS) is - according to the International Telecommunication Union's (ITU) Radio Regulations (RR) - a "land station in the land mobile service." A base station is called node B in 3G, eNB in LTE (4G), and gNB in 5G. The term is used in the context of mobile telephony, wireless computer networking



## 4 types of Base stations

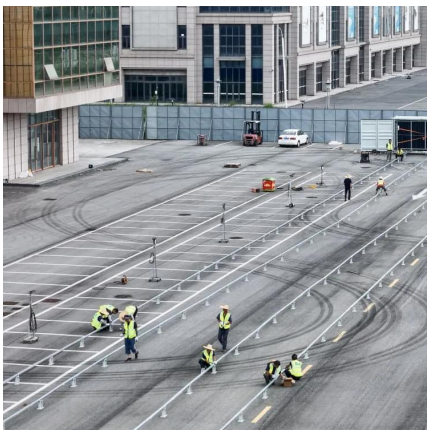
Macro cell, Micro cell, Pico cell and Femto cell are 4 types of base stations in wireless communication networks. Macrocell antennas must be properly mounted on ground-based ...





## Quick guide: components for 5G base stations and antennas

Base stations A 5G network base-station connects other wireless devices to a central hub. A look at 5G base-station architecture includes various equipment, such as a 5G ...



## Base station types: a solution for every deployment scenario

There are different types of base stations, offering a wide variety of operating characteristics under different conditions, with a suitable solution for each type of scenario, but ...



## Equipment for Your Ham Radio Station

Essential Equipment for a Ham Radio Station  
Setting up a ham radio station requires a few essential pieces of equipment. In this section, we will discuss ...



## Base Station Class

Base station classes refer to the categorization of base stations into wide area, medium range, and local area types, each defined by specific RF requirements and deployment scenarios, ...

## Types of Cell Towers and Cell Sites You Need to Know

A base station, small cell or repeater at the headend serves as the signal source, and fiber distributes the signal to remote equipment in IT ...



## Unraveling the Mysteries of Cell Towers and Base ...

In the ever-evolving landscape of mobile communications, understanding the intricacies of cell sites, cell towers, and base stations is crucial. These terms, ...

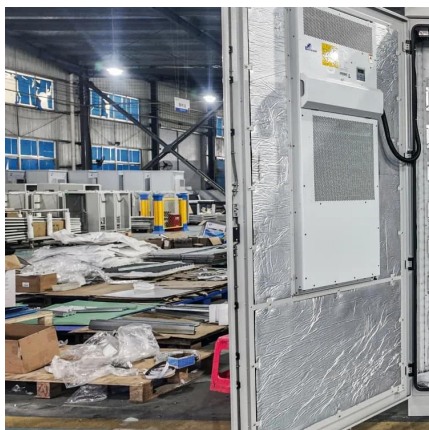
## Cell sites and cell towers in a mobile cellular network

A picture of a cell tower at a cell site Cell site means the location where a cell tower is installed  
A cell site is a location or "site" where a mobile ...



### [Breaking Down Base Stations - A Guide to Cellular Sites](#)

What are the main components of a telecom tower? The technology that makes up most telecom tower sites can be boiled down to three main categories: communications ...



## **Base Stations and Cell Towers: The Pillars of Mobile Connectivity**

Base stations use antennas mounted on cell towers to send and receive radio signals to and from mobile devices within their coverage area. This communication enables ...



## **What is a base station?**

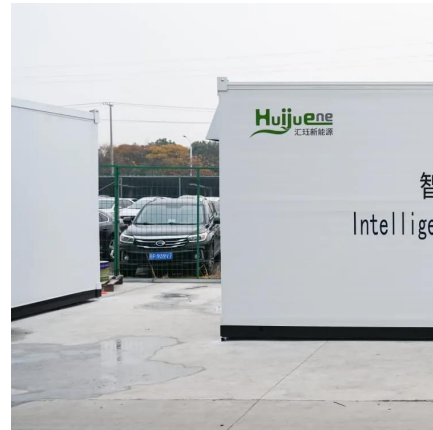
In telecommunications, a base station is a fixed transceiver that is the main communication point for one or more wireless mobile client devices. A base station serves as ...





## Base Stations and Cell Towers: The Pillars of Mobile ...

Base stations use antennas mounted on cell towers to send and receive radio signals to and from mobile devices within their coverage area. ...



## **Guide to Base Station Communications Equipment , Office of ...**

The first section discusses the frequency bands available to law enforcement agencies and factors that affect coverage in communications between base and mobile stations. Advantages ...

## **Contact Us**

---

For catalog requests, pricing, or partnerships, please visit:  
<https://bringmethehorizon.eu>