



SolarMax Pro Energy Storage Systems

Can a 3500w inverter be used with a household water pump inverter





Overview

Can a 500W inverter run a well pump?

As long as the inverter can handle the surge watts, you should be able to run the pump without trouble. Of course the rest of your solar system must be of sufficient size too. Does this mean you should get a 500W inverter?

No, because the well pump still needs 3000 watts approximately during startup.

Can a 2000W inverter run a refrigerator?

A 2000W inverter is a reliable source of continuous power for your most demanding equipment, such as power tools (driller, grinder, jigsaw, etc.). In addition, it can be a lifesaver in case of a power outage – 2000W is enough to run all of your basic domestic appliances, including a large fridge/freezer. What will a 3000W inverter run?

.

How many watts does an inverter need?

If you have a 1.5 HP pump, its running watts is going to be around 1500 watts, more or less. However, pump motors need a surge of power to start up. In a 1.5 AC pump this is about 3000 watts. Add 25% to 3000 watts and you get 3750 watts. Round that off to 4000, and that is the inverter you need.

Can a 3000W inverter run AC?

A 3000W inverter can run all the electric equipment in an off-grid cabin. It's even powerful enough to run a 1HP AC unit together with a refrigerator, TV, electric fan, led lights, and kitchen equipment. Related Reading: [DC To AC Conversion: How Do Inverters Convert DC To AC?](#)

Real-world scenario: What will a 3500W inverter run?



.

Can a 500W inverter run a refrigerator?

A 500W inverter will do a great job at powering your USB devices and laptop, together with LED lights, a water circulation pump, and an electric fan. On top of that, it will easily run a small refrigerator/freezer. Related Reading: [How Do Off-Grid Inverters Work?](#)

What will a 700W inverter run?

.

What can a 1000W inverter run?

A 1000W inverter works great in combination with lithium batteries (up to 1kWh). It will run multiple basic appliances simultaneously, such as a refrigerator, TV, projector, video games, printer, and small stereo equipment. What will a 1500W inverter run?

A 1500W inverter is powerful enough to cover most of your needs during an off-grid trip.



Can a 3500w inverter be used with a household water pump inverter

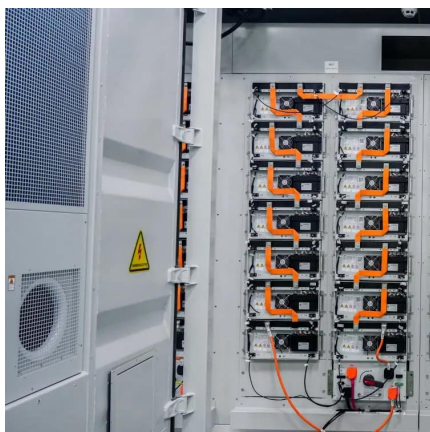


? Appliances You Can and Cannot Use with an Inverter - A Guide

Inverters have become a household essential for managing power outages and running appliances during blackouts. But not all appliances are suitable for inverter ...

Inverter Size Calculator

Knowing your AC power needs is key for selecting the right inverter. WattBuild's calculator lets you list the devices you want to power and then tells you the key stats you need to know, as ...



[Can a 380V water pump inverter be used in a water](#)

Conclusion In conclusion, a 380V water pump inverter can be used in a waterproof enclosure, provided that the appropriate precautions are taken to ensure the safety and reliability of the ...

Inverter power for water pumps: the ultimate guide to keep your home

With the increasing popularity of alternative energy sources, the question of whether a water



pump can run on an inverter has become a topic of interest. This blog post ...



[What Kind of Solar Inverter Can Drive a Water Pump?](#)

A solar pump inverter is a type of inverter specifically designed for driving water pumps using solar energy. Unlike traditional inverters, solar pump inverters ...

[What Will 3500 Watt Generator Run, EcoFlow US](#)

A 3500W generator is a powerful, robust, and versatile model with enough power for household backup or use at a work site. You can run most household appliances, virtually any RV ...



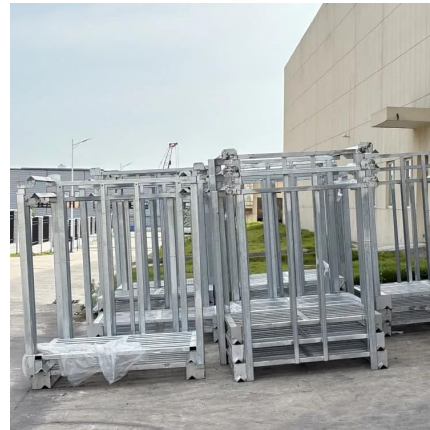
Inverter required for pressure pump

Most likely 3kw or higher spec inverter would be better suited and would/should allow more solar panels, aim for about 2000 watts solar panels. Make sure about your startup ...



[What Can A 3500 Watt Generator Run? Small but ...](#)

The most common question is What Can A 3500 Watt Generator Run? In this article, I will answer all questions and explain everything in great ...



[The Only Inverter Size Chart You'll Ever Need](#)

Inverters have become a household essential for managing power outages and running appliances during blackouts. But not all appliances are suitable for inverter ...

[How Many Batteries Do I Need for a Solar Inverter ...](#)

The items in the table can be used simultaneously. Adjusting the appliances may let you use the more items, for example, if only 2 fans, no ...



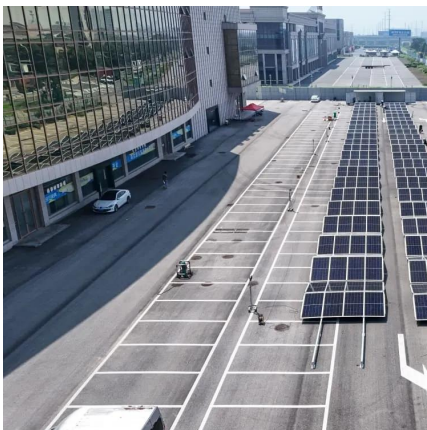
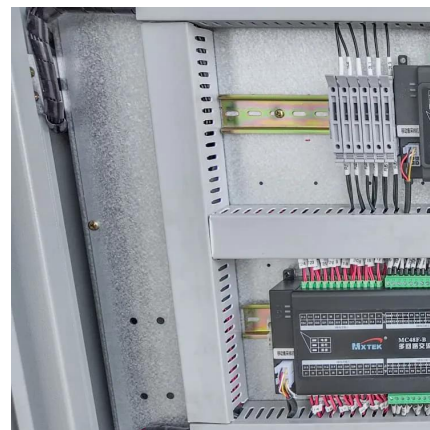
[How to Select Power of Inverter for Home Use?](#)

When selecting an inverter, its power should be higher than the starting power of the home electrical appliances used. When working, the ...



The Only Inverter Size Chart You'll Ever Need

Can I use a higher wattage inverter than my total appliance load requires? Yes, using an inverter with a higher wattage rating than required is typically safe and can be ...



Can You Use An Inverter For A Water Pump?

The short answer is yes; you can use an inverter to power a water pump. However, caution must be exercised when doing so because water pumps require a considerable amount of power to ...

What Will a 3500 Watt Inverter Run?

Yes, it depends on the total power of the electrical equipment in your house. If it is lower than 3500W, it can be operated, but if it exceeds 3500W, it is recommended that you ...





[How to Select Power of Inverter for Home Use?](#)

When selecting an inverter, its power should be higher than the starting power of the home electrical appliances used. When working, the inverter itself consumes part of the ...

[What Inverter Size for Well Pump to Use?](#)

As long as the inverter can handle the surge watts, you should be able to run the pump without trouble. Of course the rest of your solar system must be of sufficient size too.



Inverter power for water pumps: the ultimate guide to keep your ...

With the increasing popularity of alternative energy sources, the question of whether a water pump can run on an inverter has become a topic of interest. This blog post ...

Low cost and high efficiency: Recommended solar inverter types

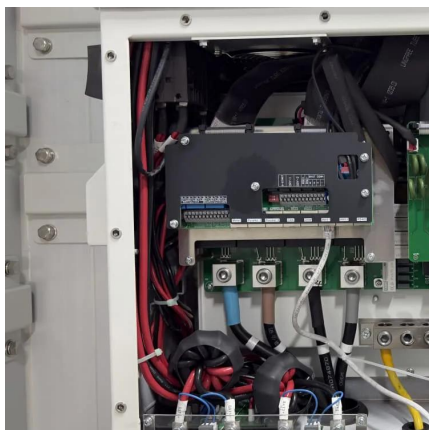
...

This article explores in depth the types of solar inverters suitable for small-power water pumps, aiming to provide accurate inverter selection references for agricultural irrigation, ...



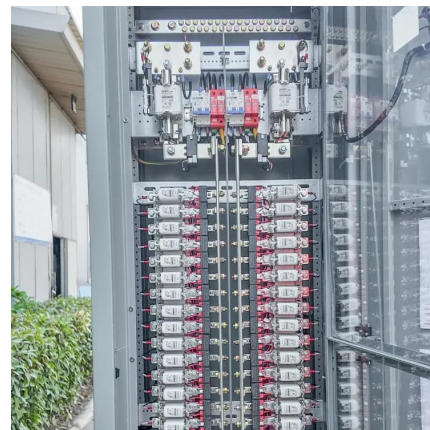
[What is a water pump inverter and other FAQs](#)

In large or complex plumbing systems a water pump inverter is a key part of the design. FAQs about water pump inverters and variable speed ...



What Will a 3500W Inverter Run?

A 3500W inverter is suitable for a medium sized solar system, meeting the average household's electricity needs. However, consider future power needs; if you expect higher ...



Water Pump and Inverter Compatibility: The Ultimate Guide

However, a common question arises: can water pumps run on inverters? In this comprehensive blog post, we will delve into the technicalities and practicalities of using ...



Comparing Water Pump Inverters

Water pump inverters are essential components in many household and industrial applications, enabling the efficient operation of pumps by converting alternating current (AC) to direct ...



[Buy Water Pump Inverter online , Lazada .ph](#)

An inverter water pumps are designed to pump water in a range of ranging from 5 gallons to 10 gallons. If the water pump is small, then a inverter pump pump can handle the water amount of ...

[How to select the Perfect Inverter for your house: A ...](#)

11?Water Pump: For a household water pumps, choose an inverter with a power rating at least 3-7 times higher than the water pump's rated power, considering the startup surge.



Contact Us

For catalog requests, pricing, or partnerships, please visit:
<https://bringmethehorizon.eu>