



SolarMax Pro Energy Storage Systems

Can a 2000v solar panel be used with an inverter





Overview

You can run an inverter with solar panels, but you don't have to. An inverter can run without a solar array, but it needs a battery bank or another source to power it. We have already covered the battery re.

How many solar panels can you put on an inverter?

The answer depends on the size of your inverter and the wattage of your panels. A general rule of thumb is that you can put up to twice as many panels on an inverter as the inverter can handle in watts. So, if you have a 1,000-watt inverter, you could theoretically put up to 2,000 watts worth of solar panels on it.

Can a solar system have multiple inverters?

A: Yes, using multiple inverters is a common approach for larger solar panel systems. In this setup, the system can be designed with several inverters, allowing you to connect more panels overall. Each inverter can manage a specific number of panels, and this can enhance system performance and efficiency.

How many solar panels for a 2000 watt inverter?

This is because using 7 solar panels of 300 watts for a 2000 watt Inverter does not take up much space as using 200 watts or 100 watts solar Inverter. Regardless, you can use the 200 watts solar panel combination or the 100 watts Solar panel combination as long as the total output is minimal of 2000 watts.

How to choose a solar inverter?

You can expect that the inverter should match or slightly exceed the combined wattage produced by the solar panels. Therefore, if you have an array of 20 solar panels, each with a capacity of 300 watts, the total output will be 6000 watts, which is an important benchmark for choosing your inverter.

Can I connect more solar panels to an inverter?



It's not a good idea to connect more solar panels to an inverter than it's rated for. But if the total power output of the solar panels matches or is within the maximum rated capacity of the inverter, then it's safe and efficient.

Are there different types of solar inverters?

A: Yes, there are different types of inverters, and they do affect the number of solar panels you can connect. The most common types are string inverters, microinverters, and power optimizers. String inverters have a set limit on the number of panels they can support due to their centralized nature.



Can a 2000v solar panel be used with an inverter



[How many solar panels for 1000, 1500, 2000, 3000, ...](#)

Ideally, your solar panels' total watts should be equal to your solar Inverter watts to have a good solar system. Anything solar panels total watts ...

[How to Wire Solar Panels to Inverter: Complete Guide](#)

How to Wire Solar Panels to Inverter: Connect them in series, parallel, or a combination of both, depending on the voltage & current output.



How Many Solar Panels Do I Need For a 2000 Watt Inverter?

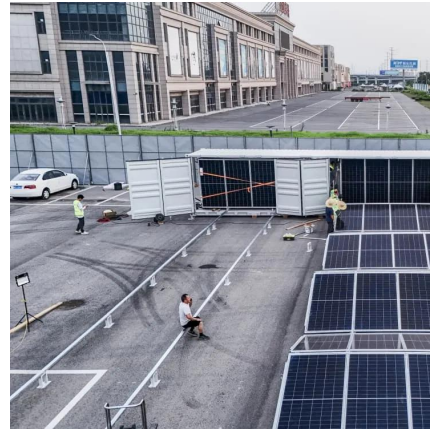
You can run an inverter with solar panels, but you don't have to. An inverter can run without a solar array, but it needs a battery bank or another source to power it.

[How many solar panels can an inverter handle](#)

Solar panels are a crucial component of your solar energy system, but understanding how



many can be connected to your inverter is crucial for ...

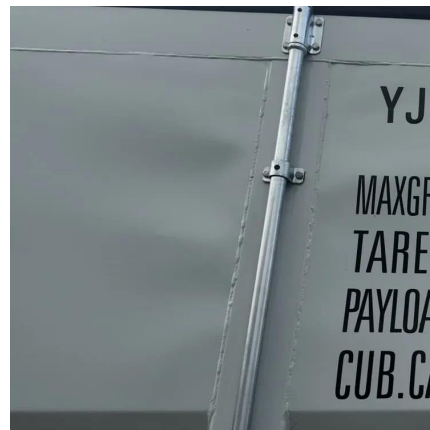


[The Only Inverter Size Chart You'll Ever Need](#)

We created a comprehensive inverter size chart to help you select the correct inverter to power your appliances. The need for an inverter size ...

[20160818 spw 1500V system white paper](#)

Solar panel manufacturers who want to offer solar panels that are rated at 1500VDC have to change some of the materials (backsheet), spacing of insulating materials, manufacturing ...



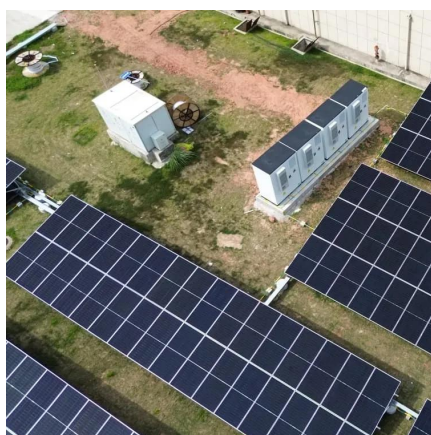
Is it Safe to Have Too Many Solar Panels on an Inverter?

You can technically hook up more solar panels to an inverter than it's rated for, but it's not a good idea because you'll lose efficiency, you could mess up your stuff, and it's not safe.



How to wire a 1000, 1500, 2000, 2500, 3000, 4000, 5000-watt inverter

Larger inverters like 1000, 1500, 2000, 2500, 3000, 4000, 5000-watt inverters need to be directly hard-wired to a battery. For this, you need to find a suitable location to mount the ...



[What Appliances Will a 2000 Watt Inverter Run? - ...](#)

A 2000-watt power inverter unlocks off-grid power for essential appliances--but knowing its real-world limits prevents frustrating overload ...

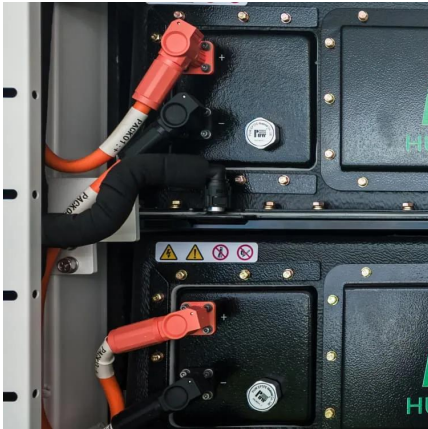
[How Many Solar Panels Can I Connect to an Inverter?](#)

Connecting the right number of solar panels to your inverter is about more than just filling space on your roof--it's essential for making your ...



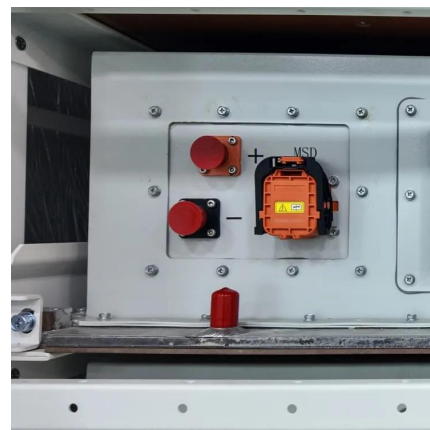
How many solar panels can I use with a particular inverter?

To determine the maximum number of solar panels you can use with an inverter, take the inverter's maximum input voltage and divide by your solar panel's Open Circuit ...



How Many Solar Panels Can I Connect to an Inverter? A ...

This guide will discuss the factors that determine how many solar panels can be connected to an inverter, such as inverter specifications, wiring configurations, and the use of charge controllers.



[What Inverter Size Do I Need to Run a Coffee Maker?](#)

In an off grid solar panel system the inverter relies on a battery bank to power appliances. Your battery has to be large enough not just for your coffee machine but every appliance you want ...

Is it Safe to Have Too Many Solar Panels on an Inverter?

You can technically hook up more solar panels to an inverter than it's rated for, but it's not a good idea because you'll lose efficiency, you could ...



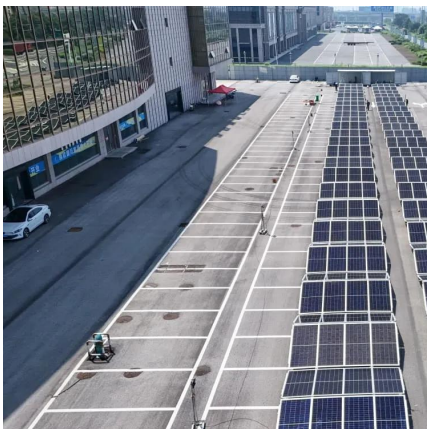


2000W Solar Panels Revealed: What They Actually Power & Why

Inverter efficiency: The inverter turns the DC power from your solar panels into AC power that you can use in your home. A good inverter can be 95-98% efficient, while a cheaper one might ...

[How Many Solar Panels for a 2000 Watt Inverter?](#)

How Many Solar Panels for a 2000 Watt Inverter? To effectively power a 2000 watt inverter, you typically need between 6 to 8 solar panels, depending on the wattage rating of each panel.



[How Many Panels Can I Put on My Inverter?](#)

A general rule of thumb is that you can put up to twice as many panels on an inverter as the inverter can handle in watts. So, if you have a 1,000-watt inverter, you could ...

[Battery bank required for 2000w inverter](#)

I have installed a 2000w pure sine wave inverter into my 2019 Thor Freedom Elite 24HE. I had the inverter installed in another RV and pulled it out before I traded it in.



2000V: Solar Odyssey -- How and Why the Industry is Moving Towards 2000V

Listen as we unpack how 2000V technology is poised to revolutionize utility-scale solar economics and how early adopters will gain a competitive edge in renewable energy's ...



How Many Panels Can I Put on My Inverter?

A general rule of thumb is that you can put up to twice as many panels on an inverter as the inverter can handle in watts. So, if you have a ...



How many solar panels for 1000, 1500, 2000, 3000, 4000, 5000 ...

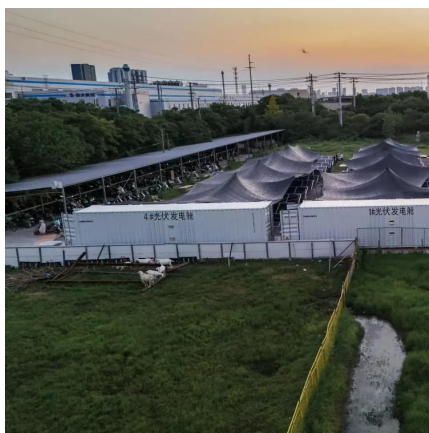
Ideally, your solar panels' total watts should be equal to your solar Inverter watts to have a good solar system. Anything solar panels total watts short of the solar Inverter watts is ...





How many solar panels can I use with a particular ...

To determine the maximum number of solar panels you can use with an inverter, take the inverter's maximum input voltage and divide by your ...



How many solar panels can an inverter handle

Solar panels are a crucial component of your solar energy system, but understanding how many can be connected to your inverter is crucial for optimal performance. ...

How Many Solar Panels Can I Connect to an Inverter?

This guide will discuss the factors that determine how many solar panels can be connected to an inverter, such as inverter specifications, wiring ...



Can I Connect Solar Panels Directly to an Inverter?

Can I connect solar panels directly to an inverter? Learn how to wire solar panels to inverters properly for grid-tied and off-grid photovoltaic ...



Can I Connect Solar Panels Directly to an Inverter? Explained

Can I connect solar panels directly to an inverter? Learn how to wire solar panels to inverters properly for grid-tied and off-grid photovoltaic systems.



What's the Difference Between 1000W and 2000W Inverters?

Renogy provides a wide range of solar power system components for home and off-grid solar applications. Our selection includes a range of high-quality pure sine wave ...

[Dual 100A LiFePO4 batteries with 2000 watt inverter.](#)

I have a travel trailer. I was going to purchase 2 100aH batteries (each has a 100a BMS), but want to occasionally use a microwave with an inverter. The inverter would need to ...





Contact Us

For catalog requests, pricing, or partnerships, please visit:
<https://bringmethehorizon.eu>