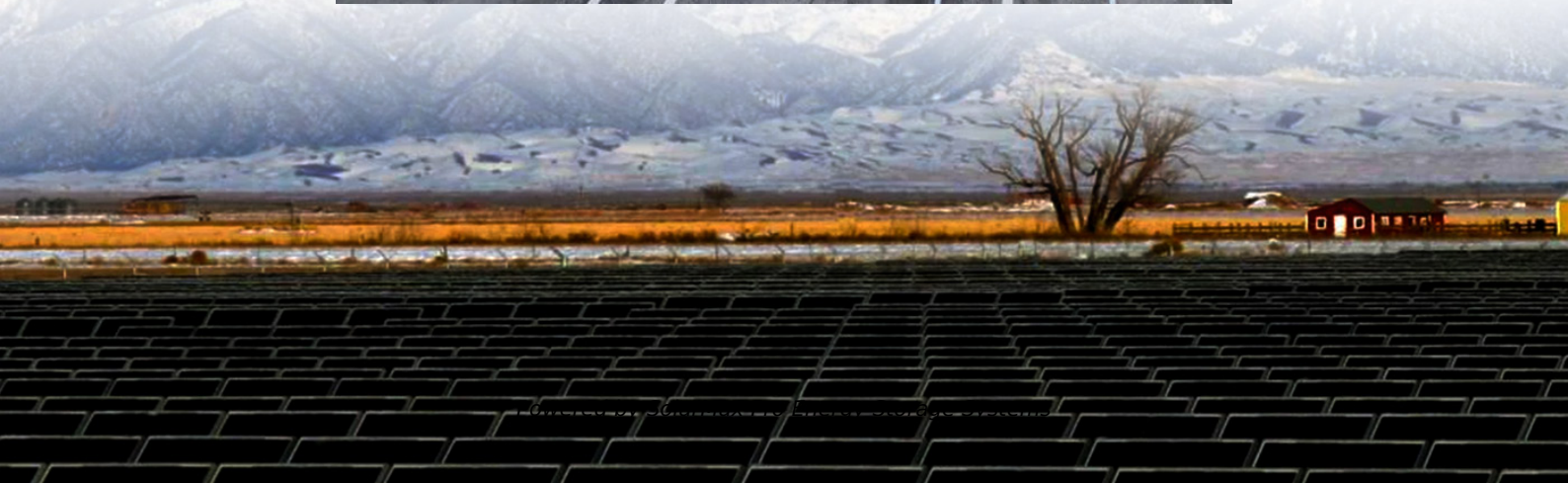




**SolarMax Pro Energy Storage Systems**

# **Campus communication base station inverter grid connection requirements**





## Overview

---

What are the requirements pertaining to inverter-based resources?

Elements of these requirements pertaining to inverter-based resources include, but are not limited to, the following: Any transmission line(s) connecting the inverter-based resource from the substation transformer to the POI should be modeled to the same level of accuracy that is used by the TO for other similar BPS elements.

Can grid-forming inverters be integrated?

r system operation with grid-forming (GFM) resources. In some cases, those requirements may not be appropriate for or may even inadvertently limit the use of GFM resources. The UNiversal Interoperability for grid-Forming Inverters (UNIFI) Consortium is addressing fundamental challenges facing the integration of GFM inverters in elec.

What are BPS-connected inverter-based resource performance recommendations?

The recommendations described throughout this chapter are based on those defined in the Reliability Guideline: BPS-Connected Inverter-Based Resource Performance,<sup>35</sup> and should be used as a reference when developing local interconnection requirements suitable for each specific TO's system.

Are BPs-connected inverter-based resources better than low voltage connected distributed energy resources?

BPS-connected inverter-based resources may cause less voltage fluctuation (flicker) concerns than low voltage connected distributed energy resources due to a higher reactance-to-resistance (X/R) ratio in HV/EHV systems, and the capability of BPS-connected inverter-based resources to automatically control voltage.

How should inverter-based resources be configured to control voltage at the pom?



Inverter-based resources should be configured to control voltage at the POM with a closed-loop, automatic voltage control mode to maintain the scheduled voltage provided by the TOP.

Which inverter settings should be approved by the company?

settings shall be approved by the Company. IEEE 1547 compliant and UL-1741 certified<sup>18</sup> inverters shall be equipped with an internal active anti-islanding scheme, under voltage (27), over voltage (59), under frequency (81U) and over frequency (81O) relays.



## Campus communication base station inverter grid connection requirements

---



### SRP Facility Connection Requirements

This FCR applies to all synchronous and non-synchronous generating facilities. Requirements that apply specifically to Inverter-Based Resources (IBR) are included in Appendix 1, ...

### Grid Standards and Codes , Grid Modernization , NREL

The goal of this work is to accelerate the development of interconnection and interoperability requirements to take advantage of new ...



### **2800-2022**

Purpose: This standard provides uniform technical minimum requirements for the interconnection, capability, and performance of inverter-based resources interconnecting with transmission and ...

### **Report**

Experience has shown that clear and effective communication of these requirements results in more reliable operation of inverter-based





resources. TOs should provide clarity to the required ...

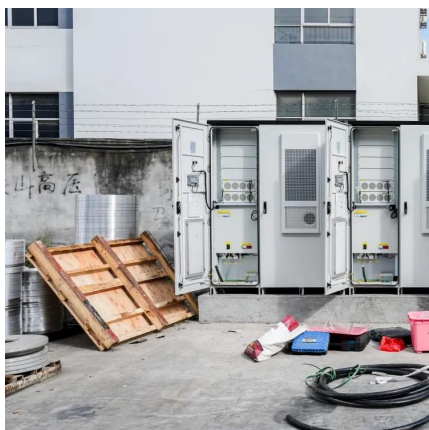


### [\(PDF\) Microgrid and Distributed Energy Resources ...](#)

Installation requirements Inverters  $\leq 200$  kVA at Low voltage Australia / New Zealand AS 4777-2 2015 Grid connection of energy systems ...

## **MAX 50-100K user manual**

1.2 Applicable Personnel Only qualified electrical technicians are allowed to install MAX series inverter. With reading through this manual and following all the precautions, ...



## **AESO Connection Requirements for Inverter-Based Resources**

The Alberta Electric System Operator (AESO) has developed this document to set out some functional requirements for facilities that are connected with the Alberta Interconnected Electric ...



## Specifications Electrical for Installations 2024

ESB 756-2024 references all requirements for parallel generation connected to National Grid facilities located in transmission jurisdictions in Upstate New York, Massachusetts, New ...



## **An Overview of Inverter-based Resource Interconnection ...**

nnexion of energy storage distributed energy resources (ES DER). The guide's scope includes ES DER that are interfaced to an EPS via a power electronic interface (commonly referred to ...

## **200, 49, 0**

A general overview of grid connection codes for integrating photovoltaic (PV) power plants to grids is presented in [1]. It presents a useful survey of grid codes, regulations, and technical ...



## **A comprehensive review of grid-connected solar photovoltaic ...**

This manuscript presents various standards of grid-interactive solar PV inverters and their detailed analysis in section 2. The requirements of the grid-connected solar power ...



### Requirements-for-Transmission-Connected-Facilities

These Requirements describe the FE plans to achieve the required system performance throughout the planning horizon by establishing connection requirements for new and ...



### **Telecommunication base station system working principle and ...**

The ESB-series outdoor base station system utilizes solar energy and diesel engines to achieve uninterrupted off grid power supply. Solar power generation is the use of ...

### **Philippine Grid Code (2016 Ed.) , ESCAP Policy Documents ...**

Objectives of the Philippine Grid Code 2016 Edition: The Philippine Grid Code 2016 Edition was developed: (a) To refine the existing provisions of the Philippine Grid Code Amendment No. 1; ...







### [IEEE 1547 and 2030 Standards for Distributed Energy ...](#)

P1547.8 addresses advanced controls and communications for inverters supporting the grid and best practices addressing multiple inverters and microgrids, and provides state-of-the-art ...

### [Energy Delivery Requirements for Connection of New ...](#)

This page intentionally left blank. Requirements for Connection of New Facilities or Changes to Existing Facilities Connected to the AEP Transmission System CAUTION: Printed copies of ...



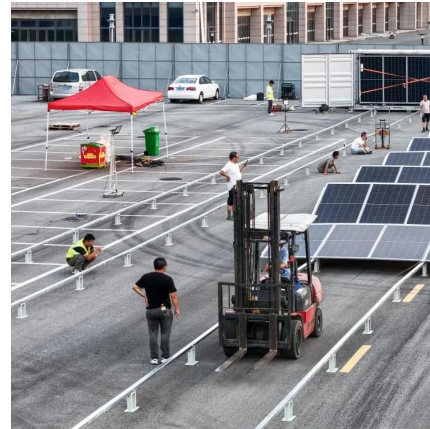
### [Specifications for Grid-forming Inverter-based Resources](#)

The purpose of the UNIFI Specifications for Grid-forming Inverter-based Resources is to provide uniform technical requirements for the interconnection, integration, and interoperability of GFM ...

## **How Solar Energy Systems are Revolutionizing Communication Base Stations?**

Energy consumption is a big issue in the operation of communication base stations, especially in remote areas that are difficult to connect with the traditional power grid, ...





## Grid Communication Technologies

The goal of this document is to demonstrate the foundational dependencies of communication technology to support grid operations while highlighting the need for a systematic approach for ...



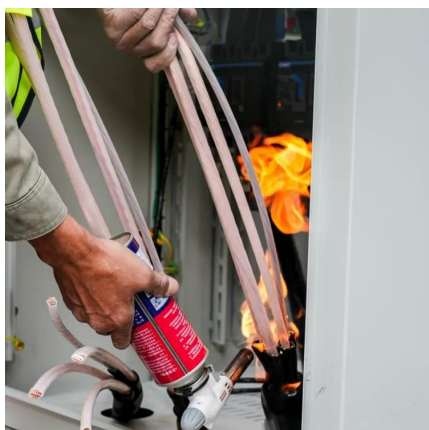
## Requirements-for-Transmission-Connected-Facilities

Purpose This reference guide defines the Requirements for Transmission Connected Facilities (Requirements) that constitute the facility connection requirements for all affiliates of ...



## IEEE 1547 and 2030 Standards for Distributed Energy ...

IEEE 1547 provides mandatory functional technical requirements and specifications, as well as flexibility and choices, about equipment and operating details that are in compliance with the ...





## Grid Connection Requirements

Grid Connection Requirements - Appendices 4.2 - Requirements for Generation and Electricity Storage Facilities Connected to the IESO-Controlled Grid The performance requirements set ...



## [Grid Standards and Codes , Grid Modernization , NREL](#)

The goal of this work is to accelerate the development of interconnection and interoperability requirements to take advantage of new and emerging distributed energy ...

## Contact Us

---

For catalog requests, pricing, or partnerships, please visit:  
<https://bringmethehorizon.eu>