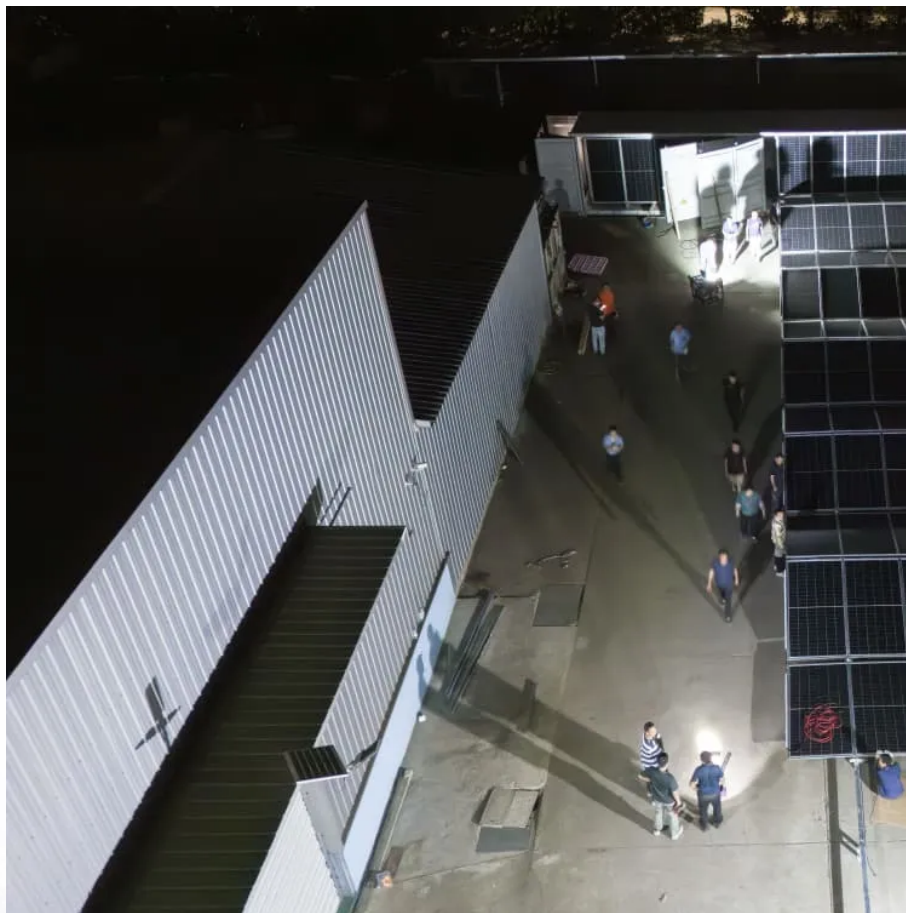




SolarMax Pro Energy Storage Systems

Battery cabinet voltage continues to drop





Overview

Why does battery voltage drop with load?

The greater this (non-load) internal resistance the more the battery connection voltage will drop with as load increases. It's more common with lead acid batteries to see larger voltage drop with load as they have a higher internal resistance than lithium chemistry batteries.

Does a battery drop under load?

Dropping under load, however, is exactly how it works. when you apply a load to a battery, the voltage will drop. This behavior is significantly less when using an LFP battery, but still present - it's simply how a battery behaves.

Is a battery voltage drop real?

So, the voltage drop is real — the measured voltage is what your load gets. The more current it draws from the battery, the lower is voltage it gets. When the battery is open you are measuring an open cell voltage. When the battery is in the system it's closed cell voltage under load.

What happens if you remove a battery load?

When you remove the load, the voltage recovers quickly. But with lead acid or alkaline batteries, it may take a lot longer to recover to the final open-circuit voltage after removing the load. In other words, it is more complicated than a voltage source in series with a resistor.

Why does a battery drop voltage if it's open or closed?

When the battery is open you are measuring an open cell voltage. When the battery is in the system it's closed cell voltage under load. You are dropping some voltage across the internal impedance of the battery because your system is drawing current when the measurement is being made (so at the terminals the voltage is indeed lower).



What if battery voltage drops below 8 volts?

If the battery voltage drops below 8 Volts when placed under a high amp load, then it will need replaced. Another early test to conduct is the alternator charging voltage. This test is performed by using the 20 V DC range on your VOM to test voltage at the battery terminals as the engine is running. The voltage should be in the 13.5 -15 V range.



Battery cabinet voltage continues to drop



I have a 97 saturn that will not stay running and the battery voltage

i have a 97 SATURN that will not stay running and the BATTERY VOLTAGE CONTINUES to DROP.Ok.. we are going to start by checking the fuses IGN1 and IGN3 for battery voltage with ...

[ASE A6 Study Guide Flashcards , Quizlet](#)

ASE A6 Study Guide Tech A says that voltage should not drop below 9.6V at 70° F during a battery capacity test. Tech B says the battery's state of charge and voltage increase as the ...



Does battery voltage actually get lower when connected to a ...

I am using a 3.7V battery and my microcontroller monitors the voltage and goes to sleep if my battery voltage is too low. The issue is that it reads a lower voltage than the battery ...



[How Much Voltage Should A Car Battery Drop Overnight?](#)

When it comes to maintaining a healthy car battery, one of the most critical factors to



consider is the voltage drop overnight. A car battery's voltage drop can have a significant ...



BC55 Battery Cabinet Installation, Operation, & Maintenance ...

Isolates the battery cabinet from the UPS Divides the 480VDC battery string into two (2) battery strings of 240VDC each. Unlocks the battery cabinet doors to allow access to the cabinet ...

Why would battery bank voltage drop

Batteries and their connections to loads are not zero resistance devices, they have an internal resistance so there will be a voltage drop across them, and that voltage drop ...



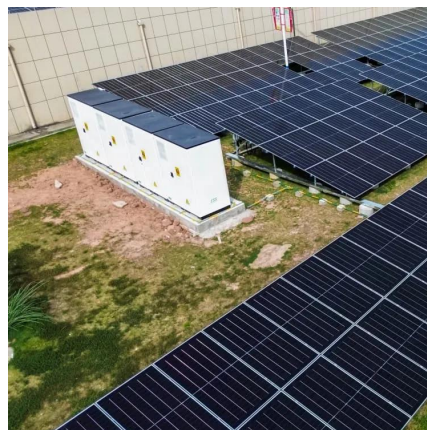
Series: Oasis-L215 OasisL215

2.3.2 Product structure The Oasis L215 battery cabinet energy storage system consists of battery box, high voltage control box, switchboard, fire protection system, temperature control system, ...



Battery voltage high & drops low under load!

I certainly recommend that you upgrade your battery bank; this may end up being required if, after a battery test, you discover that you need a ...



Battery Voltage Drop In Cars: The Essential Guide To Causes ...

A car battery is the lifeblood of your vehicle, providing the electrical power needed to start the engine and operate various components. However, sometimes you may encounter a ...

Car Battery Voltage Drops While Driving: 5 Reasons ...

Parasitic Battery Drain Parasitic battery drain refers to a situation where an electrical component or system in the vehicle continues to draw power even ...



Electric forklift battery question

I have a 36 volt electric lift and if it sits a week or so the voltage drops to around 34V, after a good charge the voltage reads 37V or so but with a volt meter attached that reads ...



Why is Battery Voltage Spiking when Charging

A 400Ah LiFePO4 battery should be able to take 30A when charging, without issues. ----- What also happen is that the battery percentage suddenly changes from 80% to 100% even though ...



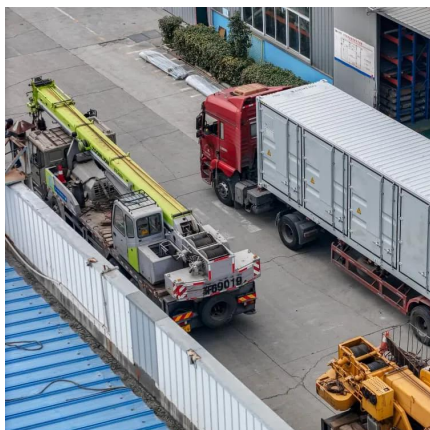
Why Does Battery Voltage Drop-Reasons and Solutions

A decrease in battery voltage causes the acid in the electrolyte to grow weaker, thus resulting in a constant reduction in the rate at which the fresh acid flows into the plates.

Battery Voltage Drop: Common Causes and Effective Solutions

Connecting a load to a battery often leads to a noticeable voltage drop, confusing many users. Understanding the underlying reasons for this behavior is in troubleshooting battery-related ...





Why Is My Car Battery Voltage Low?

Battery Age: Batteries naturally degrade over time, losing their ability to hold a charge. As a battery ages, its voltage will tend to drop.
Temperature: Extreme temperatures, ...

How Much Voltage Drop Is Acceptable 12v Car Battery? Safe ...

How Much Voltage Drop is Acceptable? The acceptable voltage drop for a 12-volt car battery depends on a range of factors, including the type of circuit, the load, and the ...



Battery Voltage drop , Thor Forums

Nor sure why there should be any drop in voltage when it is sitting in between trips . I guess I should have Mercedes check the battery that they installed if it continues to drop in ...

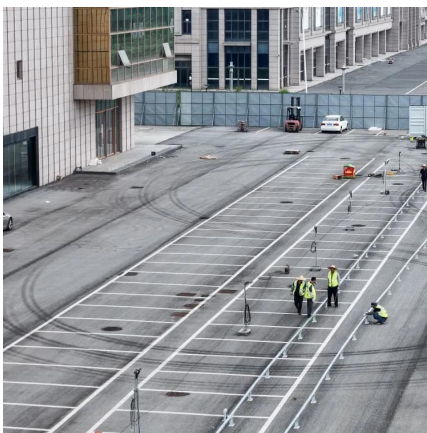
Battery voltage high & drops low under load!!

I certainly recommend that you upgrade your battery bank; this may end up being required if, after a battery test, you discover that you need a new battery. So, in summary: ...



Battery Voltage Drop: Common Causes and Effective ...

Connecting a load to a battery often leads to a noticeable voltage drop, confusing many users. Understanding the underlying reasons for this behavior is in ...



What Makes Battery Voltage Drop?

High amperage loads such as the engine starter can cause so much voltage drop that the circuit no longer has power. Check the battery condition with a battery load tester. ...



Could A Small Battery Have Low Voltage? Symptoms, Causes, ...

Low voltage in a small battery refers to a condition where the battery's voltage drops below its optimal operating level, affecting its ability to deliver power effectively. This ...



How Much Voltage Should Car Battery Lose Overnight? Normal ...

When it comes to maintaining a healthy car battery, one of the most critical factors is the voltage loss overnight. A car battery's voltage can fluctuate throughout the day due to ...



[maintaining charge deep cycle battery](#)

I have been doing some reading and planning to upgrade to a true deep cycle battery for my trailer. Currently using a marine battery purchased from Les Schwab. I've read ...

Battery Voltage Drop

Battery voltage drop occurs when the available voltage decreases under load, but the root causes are often misunderstood. Unlike simple discharge, voltage drop happens while ...



Contact Us

For catalog requests, pricing, or partnerships, please visit:
<https://bringmethehorizon.eu>