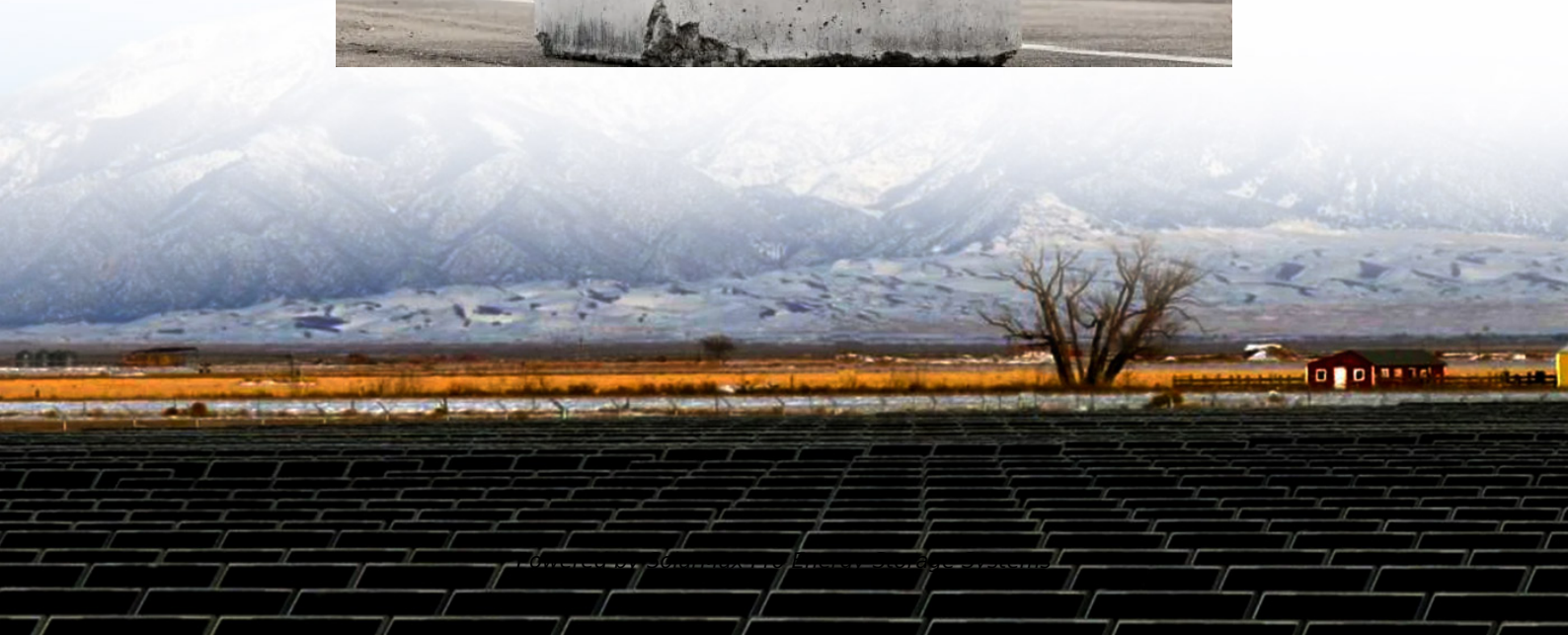




SolarMax Pro Energy Storage Systems

Battery cabinet placement site in distribution room





Overview

How should a battery room be located?

This will reduce the cost and exposure of the dc distribution system. The battery room shall be located in a way that provides access for lifting equipment to be used during initial installation and future maintenance operations. The location shall be as free from vibration as practical.

Where should storage batteries be located?

Storage batteries shall be located within a protective enclosure or area accessible only to qualified persons. A protective enclosure can be a battery room, control building, or a case, cage, or fence that will protect the contained equipment and limit the likelihood of inadvertent contact with energized parts.

Where should batteries be installed in a substation?

Batteries installed in unit substations, electrical equipment rooms and instrument rack rooms shall comply with the requirements of this section, Main Substation Design and Unit Substation Design. In these locations, stainless steel hoods vented to the outside shall be installed over batteries.

Does a battery room cover maintenance free or computer room type batteries?

It does not cover maintenance free or computer room type batteries and battery cabinets. Main keywords for this article are Battery Room Design Requirements, vented lead acid batteries, battery room safety requirements, Battery Room Ventilation, unit substations electrical. Batteries can be hazardous to both personnel and equipment.

What are the safety requirements related to batteries & Battery rooms?

Employers must consider exposure to these hazards when developing safe work practices and selecting personal protective equipment (PPE). That is where Article 320, Safety Requirements Related to Batteries and Battery



Rooms comes in.

Where should a battery charging facility be located?

Facilities for quick drenching of the eyes and body shall be provided within 25 feet (7.62 m) of battery handling areas. Facilities shall be provided for flushing and neutralizing spilled electrolyte and for fire protection. Battery charging installations shall be located in areas designated for that purpose.



Battery cabinet placement site in distribution room



Battery Room Design Requirements - PAKTECHPOINT

The battery room shall be located in a way that provides access for lifting equipment to be used during initial installation and future maintenance

...

Battery Room Design Requirements - PAKTECHPOINT

The battery room shall be located in a way that provides access for lifting equipment to be used during initial installation and future maintenance operations. The location shall be as free from ...



480.9 Battery Locations.

Working space shall be measured from the edge of the battery cabinet, racks, or trays. For battery racks, there shall be a minimum clearance of 25 mm (1 in.) between a cell container and any ...

Eaton-Battery-Handbook-BAT11LTA.PDF

Full-float operation - Operation of a DC system with the battery, battery charger and load



connected in parallel, with the battery charger supplying the normal DC load plus any self ...



NFPA 70 and NFPA 70E Battery-Related Codes Update

Abstract Two code documents have a dramatic impact on the acceptance or rejection of a battery installation by an inspector. These are the National Electrical Code (NEC /NFPA 70)1 and the ...

Battery Room

A battery room is defined as a designated area for backup and uninterruptible power supplies (UPS) that houses large lead storage batteries, typically located near facility control rooms or ...



Best Practices and Considerations for Siting Battery Storage ...

o Depending on the size of the battery and needs of the site, it is important to determine early on if the battery will be sited in the facility or outside of it. o This decision may be impacted by any ...



Differences Between LV and HV Distribution Rooms

Discover the key differences between low-voltage and high-voltage distribution rooms, including voltage levels, applications, equipment, and safety features.



Eaton Samsung Gen 3 Battery Cabinet Installation and ...

Contact your local Authorities Having Jurisdiction (AHJ), to discuss the planned lithium battery installation, including cabinet placement and spacing, as well as total quantities of lithium in ...



IFC Mounting Requirements for IQ Battery Systems

Enphase IQ Battery 3, 3T, 10, and 10T test was conducted at the manufacturers recommended mounting distances with a minimum of 6" between vertically stacked units, 1" ...



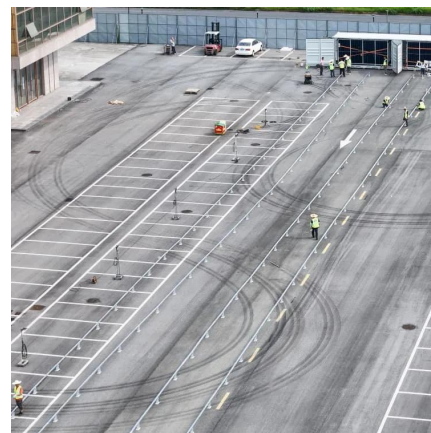
Battery Cabinet

Install the Battery Cabinet following local building requirements and applicable codes. Plan the location of the Battery Cabinet site ahead of time, taking into consideration the requirements ...



Battery Room requirements , Eng-Tips

If you do not need to use a separate room for the battery-pack, consider placing them in a room where the H₂ concentration can never reach dangerous levels (circulated air, ...



UNDERSTANDING UPS SYSTEMS AND BATTERIES

Because air exchanges in most computer rooms far exceed the ventilation of a normal work environment, placement of battery cabinets in a computer room is rarely a problem.

Data center batteries

Confirm that the generator is running stably.
After measuring the voltage at the input end of the transfer switch in the distribution cabinet to be normal, switch to the generator ...





UPS Room Layout Guide , Vital Power

Discover the optimal UPS room layout for your uninterrupted power supply needs. Explore Vital Power's comprehensive guide for efficient UPS installation and ...

Can the battery cabinet be located together with the machine ...

Where possible, it is usual to place a standard wall cabinet outside the battery room next to the door, so in the case of an emergency, the voltage may be cut BEFORE entering the room.



480.9 Battery Locations.

Working space shall be measured from the edge of the battery cabinet, racks, or trays. For battery racks, there shall be a minimum clearance of 25 mm (1 in.) ...

[Step-by-Step Guide to Designing Your Data Center ...](#)

Learn how to design a data center layout with our step-by-step guide. Optimize space, power, cooling, and cabling for efficiency and..



Switch Room Design Guide , PDF , Switch , Power Engineering

This document provides guidance on designing low voltage and medium voltage switchroom layouts. It discusses key considerations for switchboard sizing and placement, ...

The BESS System: Construction, Commissioning, and ...

Inspect and inventory packaging before installation. Keep the battery installation diagram and manual handy. Check the battery cabinet placement against the ...



1926.441

Batteries of the unsealed type shall be located in enclosures with outside vents or in well ventilated rooms and shall be arranged so as to prevent the escape of fumes, gases, or ...





Clause 10.3 Energy Storage Systems

(3) The requirements of compartmentation shall apply to any room that is designated as a battery room or of Threshold Stored Energy exceeding the limits stated in Cl.10.3.1d..



Designing Industrial Battery Rooms: Fundamentals and Standards

Industrial battery rooms require careful design to ensure safety, compliance, and operational efficiency. This article covers key design considerations and relevant standards.

Contact Us

For catalog requests, pricing, or partnerships, please visit:
<https://bringmethehorizon.eu>