

Batteries for base station wind power cabinets





Overview

Is battery storage a good choice for wind energy?

With versatile applications ranging from self-consumption optimization to backup power and peak demand management, battery storage is considered the best choice for maximizing the benefits of wind energy.

What is battery storage for wind turbines?

Battery storage for wind turbines offers flexibility and can be easily scaled to meet the energy demands of residential and commercial applications alike. With fast response times, high round-trip efficiency, and the capability to discharge energy on demand, these systems ensure a reliable and consistent power supply.

What are the different types of energy storage systems for wind turbines?

There are several types of energy storage systems for wind turbines, each with its unique characteristics and benefits. Battery storage systems for wind turbines have become a popular and versatile solution for storing excess energy generated by these turbines. These systems efficiently store the surplus electricity in batteries for future use.

Are energy storage systems a viable option for wind turbine installations?

Energy storage systems have been experiencing a decline in costs in recent years, making them increasingly cost-effective for wind turbine installations. As the prices of battery technologies and other storage components continue to decrease, energy storage systems become a more financially viable option.

How to choose a battery for a small wind turbine?

Voltage Compatibility: Ensure that the batteries you choose are compatible with the voltage output of your small wind turbine. Mismatched voltages can lead to inefficiencies and potential damage to the system. **Temperature Sensitivity:** Batteries are sensitive to temperature variations, and their



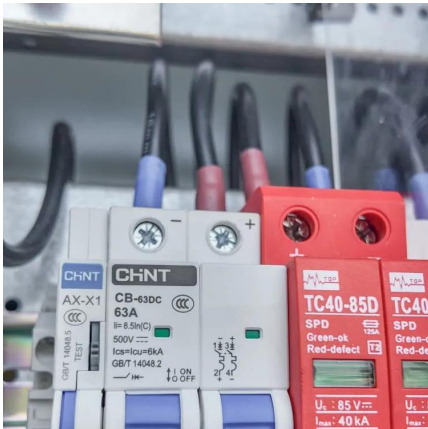
performance can be affected by extreme conditions.

Why do wind turbines need energy storage?

Wind turbines often generate more electricity than is immediately consumed. By storing and later releasing this excess energy, energy storage systems effectively address the challenge of mismatches between wind power generation and electricity demand.



Batteries for base station wind power cabinets



[BESS Commerical Energy Storage Cabinet System , AZE](#)

AZE can provide a wide selection range of outdoor integrated cabinet, battery cabinet and telecom equipment cabinet, which are widely used in wireless communication base station ...

What kind of batteries should I use to connect to my ...

Discover the essential factors in choosing batteries for small wind turbines to maximize efficiency and sustainability in your energy system.



[What Powers Telecom Base Stations During Outages?](#)

Telecom batteries for base stations are backup power systems using valve-regulated lead-acid (VRLA) or lithium-ion batteries. They ensure uninterrupted connectivity ...

Battery Bank Cabinets

Renewable energy storage: Battery bank cabinets play an important role in energy storage systems designed to support renewable energy



sources such as wind, solar, and hydropower ...



10 Best Wind Power Battery Storage Solutions for Maximum ...

When it comes to maximizing energy efficiency in wind power systems, choosing the right battery storage solution is essential. You'll find options that cater to various needs, ...



Outdoor BESS Battery Energy Storage Cabinet ...

AZE can provide a wide selection range of outdoor integrated cabinet, battery cabinet and telecom equipment cabinet, which are widely used in wireless ...



New Energy Station: How to Change Energy Supply Mode with ...

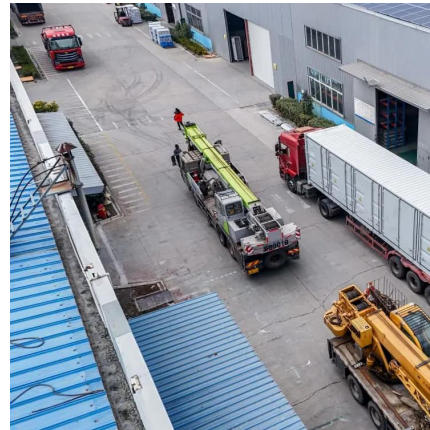
The Pole Type Base Station Cabinet represents a significant advancement in how energy is supplied and managed. By integrating smart technology, enhancing reliability, and ...





Grid-connected solar-powered cellular base-stations in Kuwait

In turn, the number of base-stations (BSs) has increased rapidly for wider ubiquitous networking; however, powering BSs has become a major issue for wireless service providers. ...



Energy Storage Systems for Wind Turbines

These systems efficiently store the surplus electricity in batteries for future use. Battery storage for wind turbines offers flexibility and can be easily scaled to ...

UMTS Macrocell base station overview

UMTS base station overview The following diagram provides a typical overview of the UMTS Macrocell base station when connected to a 3GP24i power cabinet.



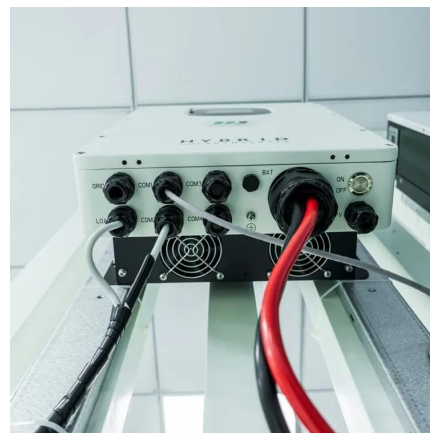
Can You Charge a Portable Power Station with a Wind Turbine?

Yes, you can charge a portable power station with a wind turbine-- but it requires the right setup, components, and knowledge. As renewable energy gains traction, many ...



does a wind system need battery storage > > Basengreen Energy

In order to address this issue, many wind systems incorporate battery storage to ensure a consistent and reliable power supply. In this article, we will explore the benefits of adding ...



Base Station Energy Storage

A base station energy storage system is a compact, modular battery solution designed to ensure uninterrupted power supply for telecom base stations. It supports stable operations during grid ...

[What equipment does the base station energy storage ...](#)

To encapsulate everything discussed, the components present in base station energy storage cabinets are vital for efficient operation and ...





[Base Power Battery Specifications , Compare Models](#)

Compare Base Power's home battery systems - from our streamlined 20kWh wall-mount to our advanced 50kWh ground-mount solution. View complete technical specifications.

[Energy Storage Systems for Wind Turbines](#)

These systems efficiently store the surplus electricity in batteries for future use. Battery storage for wind turbines offers flexibility and can be easily scaled to meet the energy demands of ...



Types of Wind Power Storage Batteries: The Ultimate Guide for ...

The secret sauce lies in wind power storage batteries - the unsung heroes capturing excess energy for rainy (or less windy) days. In this guide, we'll unpack the top ...

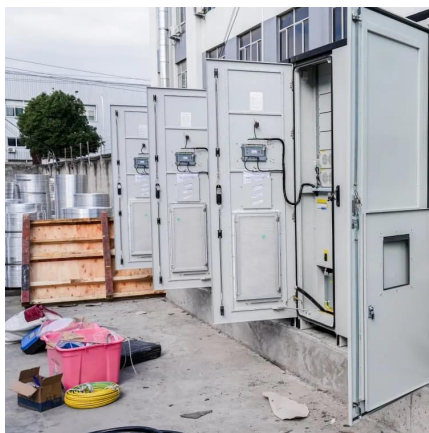
[Single \(double\) warehouse base station energy cabinet](#)

Support the introduction of multiple green power sources from photovoltaic/wind power/oil generators, and multiple voltage outputs: AC220V, DC48V, -12V; With intelligent system ...



Amazon : Battery Powered Weather Station

Weather Station Wireless Indoor Outdoor with 9-in-1 Sensor & LCD Display, Weather Station with Rain Gauge and Wind Speed/Direction, Moon Phase, Forecast, Temperature, Pressure, ...



Household wind and solar storage cabinet

This product integrates city power, oil engine, photovoltaic inverter system, wind power control system, photovoltaic panel telescopic control system, backup ...



What equipment does the base station energy storage cabinet ...

To encapsulate everything discussed, the components present in base station energy storage cabinets are vital for efficient operation and performance. Batteries, serving as ...





What are the battery cabinet energy storage power stations

most natural users of Battery Energy Storage Systems are electricity companies with wind and solar power plants. In this case, the BESS are typically large: they are either built near major ...



[Choosing the Right Battery Storage Cabinet: A ...](#)

This comprehensive guide provides a detailed overview of safety, design, compliance, and operational considerations for selecting and using ...

[What are the wind power storage batteries? , NenPower](#)

Wind power storage batteries function by storing excess electricity generated by wind turbines, which can then be distributed during periods of low wind or high demand.



[Wind Energy Battery Storage Systems: A Deep Dive](#)

Numerous case studies highlight successful battery storage implementations with wind energy. These projects improve grid operations, energy management, and demonstrate ...



Justrite Lithium Ion Battery Storage Charging Cabinet, ...

Product Description The Justrite Lithium-Ion Battery Charging Cabinet is the ultimate solution for safely charging and storing your lithium-ion ...



What kind of batteries should I use to connect to my wind turbine

Discover the essential factors in choosing batteries for small wind turbines to maximize efficiency and sustainability in your energy system.

[Base Power Battery Specifications . Compare Models](#)

Compare Base Power's home battery systems - from our streamlined 20kWh wall-mount to our advanced 50kWh ground-mount solution. View complete ...





Contact Us

For catalog requests, pricing, or partnerships, please visit:
<https://bringmethehorizon.eu>