



**SolarMax Pro Energy Storage Systems**

## **Base station outdoor construction and operation costs**





## Overview

---

How much does base operations support cost?

In 2016, \$25 billion—about 4 percent of DoD's budget—was allocated to the costs of such services, called base operations support (BOS). The costs of providing such support vary between bases, and the factors that affect those costs are not clearly understood.

What is a base station?

What is Base Station?

A base station represents an access point for a wireless device to communicate within its coverage area. It usually connects the device to other networks or devices through a dedicated high bandwidth wire of fiber optic connection. Base stations typically have a transceiver, capable of sending and receiving wireless signals;.

What are the properties of a base station?

Here are some essential properties: Capacity: Capacity of a base station is its capability to handle a given number of simultaneous connections or users. Coverage Area: The coverage area is a base station is that geographical area within which mobile devices can maintain a stable connection with the base station.

Why do we need a base station?

Technological advancements: The New technologies result in evolved base stations that support upgrades and enhancements such as 4G, 5G and beyond, its providing faster speeds with better bandwidth. Emergency services: They provide access to emergency services, so that in case of emergency, people can call through their mobile phones.

Are solar base stations economically interesting?



Based on eight scenarios where realistic costs of solar panels, batteries, and inverters were considered, we first found that solar base stations are currently not economically interesting for cellular operators. We next studied the impact of a significant and progressive carbon tax on reducing greenhouse gas emissions (GHG).

What is base operations support (BOS)?

This report analyzes the relationship between the cost of those services—also referred to as base operations support (BOS)—and specific characteristics of a base, such as its population and physical size. The key findings of the Congressional Budget Office include the following:



## Base station outdoor construction and operation costs

---



### Analyzing the Factors and Costs Involved in Military Base ...

Explore the factors driving military base construction costs, their economic impact, and future trends shaping defense budgets and regional development.

### [Base station performance and costs , Download Table](#)

This paper presents a case study of a single-chip 3G WCDMA/FDD base station implementation based on a circuit-switched network on chip.



### Base Stations

Cost and infrastructure: Base station construction, as well as retrofitting base stations for deeper penetration requiring additional investment in infrastructure like land ...

### (PDF) Ericsson's Radio Site solutions

Ericsson's Radio Site solutions offer a comprehensive approach to building efficient





radio networks, focusing on reducing total cost of ownership (TCO) through optimized design and ...

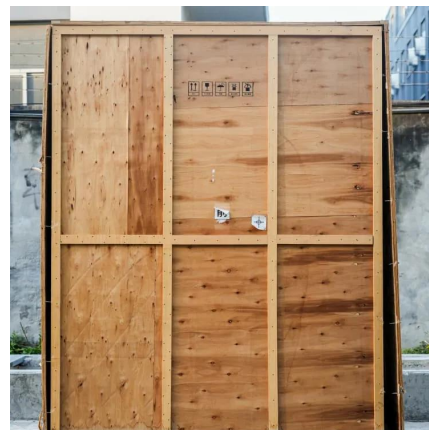


### [The Cost of Supporting Military Bases](#)

This report analyzes the relationship between the cost of those services--also referred to as base operations support (BOS)--and specific characteristics of a base, such as its population and ...

### **Base Station Operation Increases the Efficiency of Network Construction**

According to the analysis of FTTx costs of operators in 12 countries across 6 regions, the ROI period of base station operation is generally 3 years, about 3-4 years fewer than that in ...



### **Cost Analysis of Power Plants**

In this article we will discuss about:- 1. Generation Cost of Power Plants 2. Fixed and Operating Costs of Power Plants 3. Interest and Depreciation. Generation Cost of Power Plants: The ...



## How much does a military base cost to build?

The cost of construction materials (concrete, steel, lumber, etc.) and labor varies considerably depending on the location of the base and the prevailing economic conditions.



## **TETRA DIB-R5 Outdoor Base Station , TETRA Systems , Hytera ...**

The DIB R5 outdoor is the ultra compact variant for use outdoors or in particularly harsh environments. It guarantees minimum operating costs with reliable radio coverage.

**Dear Joseph,**

SECTION ONE: SITE SELECTION 2.1.

INTRODUCTION: Since the selection of a plant site has a significant influence on the design, construction and operating costs of a power plant, each ...



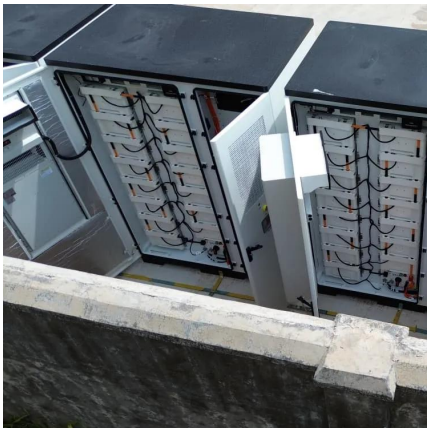
## **USAG Bavaria , Base Overview & Info , MilitaryINSTALLATIONS**

Find key information & resources for USAG Bavaria in including contacts, important messages, directions, cost of living, and more.



### Telecom Base Station , Outdoor Electronics Vents

Catering to large market demands, outdoor electronic products take up a major part of the outdoor products segment, which is mature in developed industries and relatively centralized with great ...



### **What is the cost of building and maintaining a communication base station**

In conclusion, building and maintaining a communication base station involves significant initial setup costs and ongoing maintenance expenses. These costs can vary widely depending on ...

### The Cost of Supporting Military Bases

The cost of construction materials (concrete, steel, lumber, etc.) and labor varies considerably depending on the location of the base and the prevailing economic conditions.



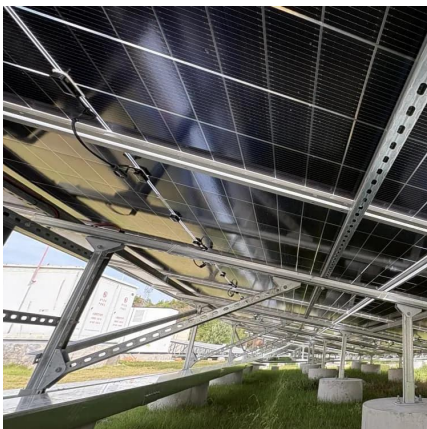


## Analyzing the Factors and Costs Involved in Military Base Construction

Explore the factors driving military base construction costs, their economic impact, and future trends shaping defense budgets and regional development.

### [Here's how much a 5G network really costs](#)

Here's how much a 5G network really costsHave you ever wondered how much a 5G non-standalone Evolved Packet Core for up to 50,000 subscribers costs, including the ...



### [Part I and II \(Building and Support Facilities\)](#)

Only new construction projects located within the Continental United States (CONUS), to include projects in Hawaii and Alaska, were utilized to develop facility specific unit costs, except for

## Optimizing the ultra-dense 5G base stations in urban outdoor ...

The objective of this study is to develop a location optimization model to support the planning of ultra-dense 5G BSs in urban outdoor areas and to help address the cost ...





## 5G Base Station Deployment: Solving the Outdoor Telecom ...

While bringing high-speed connectivity to people, the "temperature" management inside these cabinets, particularly the high energy consumption and maintenance costs of their ...



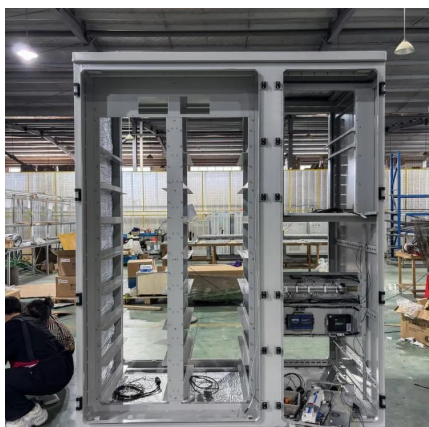
## Guidance Note 2

Context The Department of Infrastructure, Transport, Regional Development, Communications and the Arts (the department) provides and maintains cost estimation guidance intended to ...



## [Base station performance and costs.](#) [Download Table ...](#)

This paper presents a case study of a single-chip 3G WCDMA/FDD base station implementation based on a circuit-switched network on chip.





## What is the cost of building and maintaining a communication ...

In conclusion, building and maintaining a communication base station involves significant initial setup costs and ongoing maintenance expenses. These costs can vary widely depending on ...



## Microsoft Word

Outdoor enclosures have a lower acquisition cost, and do not require building permits. Transportation of the enclosure and equipment to the base station site can be accomplished ...

## Microsoft Word

Another solution to add capacity and coverage uses compact base stations which are getting large attention from both a cost and performance perspective. From a deployment perspective, ...



## Contact Us

For catalog requests, pricing, or partnerships, please visit:  
<https://bringmethehorizon.eu>