

Base station integrated power supply unit





Overview

The Power-Pac's highly regulated, low ripple 10 amp output powers radios and other sensitive communications equipment without causing RF or audio interference. At the same time it float charges one or two (depending on model) built in 7 amp/hour back-up batteries.

With 7 amp/hour battery installed, unit provides approximately the following power.*7 amps for 40 min. 10 amps for 20 min. 15 amps for 10 min. 20 amps for 4 min. With 14.

Input: 115/230 VAC, 50-60 Hz. Output: 13.6 VDC @ 5A cont., 10A Int.
Regulation: 1% line and load Ripple:1% P-P Operating Temp:0-40° C



Base station integrated power supply unit



ALLIANCE Data Sheet

The optical modules in the iBIU convert the RF and optical signals and transmits them via fiber to and from the remote units. The iBIU can be configured with any combination of point-of ...

[???base?XX??,base????????????XX? ...](#)

base?????:?????XX,?XX?????
?????????,??base?????,base+????:?????????
, ??? ???? ...

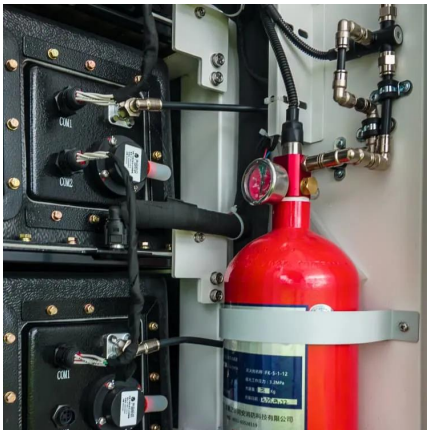
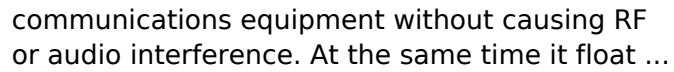


Power Supply Solutions for Wireless Base Stations Applications

Luckily, MORNSUN has a series of power solutions designed to provide state-of-the-art reliability while also curbing any unnecessary costs related to their installation, application, and ...

Power-Pac with Battery Back-Up , 12V DC , 5 Amps , 7 Amp ...

The Power-Pac's highly regulated, low ripple 10 amp output powers radios and other sensitive



Our company has developed an integrated design of distributed base station power supply system for a variety of installation environments such as corridor, shaft, and outdoor environment.

```
??,QQ?????(?????,????,????base.apk.1),?????????
?,????????????????????? ?????????????????????? ...
```



```
Obsidian??????? base ??????? ??????,?????????????
??base,??????????jpg?png?????,????????,????obsidi
an??? ...
```




The power supply design considerations for 5G base ...

To understand how, consider the power amplifier (PA) and power supply unit (PSU) in the 5G New Radio (NR) gNodeB base station. In 2G, 3G ...



5G Minimalist Base Station Optical Storage Power Supply Integrated

5G Minimalist Base Station Optical Storage Power Supply Integrated Power EquipmentAt the same time, energy management and efficient application are one of the keys. Ipandee can ...

SDXL?FLUX?Pony ??????????,????????? ...

SDXL?FLUX?Pony??,?????
?????: ???? SDXL:??Stable
Diffusion??,????????????,????????? ...



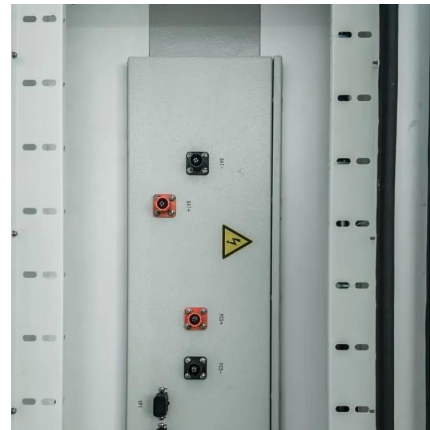
Power Supply for Base Station Market

The global base station power supply infrastructure chain is dominated by vertically integrated manufacturers with specialized R& D capabilities and extensive deployment experience.



5G Base Station Evolution , OpenRAN: RUs, DUs, CUs, and ...

5G Base Station Components A crucial role here is played by an integrated NodeB base station with a combination of 5G core, PHY, DFE, and RF front end, as well as layer 2 and layer 3 ...



Telecom Base Station Power System Solution

In order to ensure the continuity and efficiency of communication services, the power system of telecommunications base stations needs to have high reliability, stability and high efficiency to ...

CPU????????????????????

CPU-Z:??4500+,????3600+?3800+????3.6????
Armoury Crate???CPU-Z?????...





[A Beginner's Guide to Understanding Telecom Power ...](#)

These robust systems provide a reliable power supply to critical locations, such as datacentres and remote base stations, where continuous ...

Toward Net-Zero Base Stations with Integrated and Flexible ...

In this article, we design a many-to-many power supply architecture for BSs to maximize the utilization of renewable energy.



iBS3800

The integrated base station (iBS) is an outdoor station for use in the wireless broadband trunking communications system. The iBS3800 combines the functions of base band unit (BBU), ...

???base??????

base + ?? ??????(??????) base + ?? ???? ????:
XX?????base???? ?1.2-1.6M base + 25%



?????(Base ????)?

????(Base ????)?
??24?,????(???) ,???offer?



iBIU_AC SOLiD , SOLiD ALLIANCE DAS Integrated Base Stati.

The iBIU receives RF signals from, and sends RF signals to, the base station (BTS) or bi-directional amplifier (BDA). In the iBIU, each signal is independently filtered, attenuated and ...



Power-Pac with Battery Back-Up , 12V DC , 5 Amps

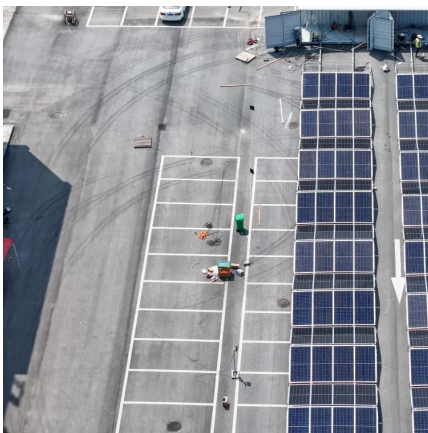
The Power-Pac offers peace of mind for the system designer or base station operator This unique power supply assures that a base station can remain up ...





Two-Stage Robust Optimization of 5G Base Stations ...

The energy consumption of the base station is mainly composed of direct current (DC) loads, including the Active Antenna Unit (AAU), Base ...



?base on sth???????base sth on sth,be based on?? ...

2 ??????? ???? , ?Base sth on/upon sth??????,???????:? ???/?
????????,??????,?????????????? ??! ...

Toward Net-Zero Base Stations with Integrated and Flexible Power Supply

The energy consumption and carbon emissions of base stations (BSs) raise significant concerns about future network deployment. Renewable energy is thus adopted and supplied to enable ...



RADWIN MultiSectorTM (PtMP) Base Station Series

A self-contained base station site in-a-box that delivers 1.5Gbps and can connect to 4 external MIMO antennas. This base station is Ideal for long-range rural ...



?????? ssp????????????????,????? ...

?????????:"XX?????base??12k,?????15?,??10k?Si
gning bonus(???)?
"??????????,??offer?package(???)???19???



The power supply design considerations for 5G base stations

To understand how, consider the power amplifier (PA) and power supply unit (PSU) in the 5G New Radio (NR) gNodeB base station. In 2G, 3G and 4G, the PA and PSU were ...

Contact Us

For catalog requests, pricing, or partnerships, please visit:
<https://bringmethehorizon.eu>