



SolarMax Pro Energy Storage Systems

Base station communication signal tower





Base station communication signal tower



[Cell Tower Range: How Far Do They Reach?](#)

Wireless networks transmit voice and data signals over cell towers, using a range of radio frequencies, that can reach a customer's cell phone far ...

Cell Tower vs Wi-Fi Tower: Understanding the Key Differences

What is a Cell Tower? A cell tower, also known as a cell site or base station, is a structure that supports antennas and other equipment necessary for wireless communication. ...



[What Are Base Station Antennas? Complete Guide](#)

Base station antennas are also known as cell site antennas and cellular antennas, and they are typically mounted on a tower or rooftop and connected to a base station through ...

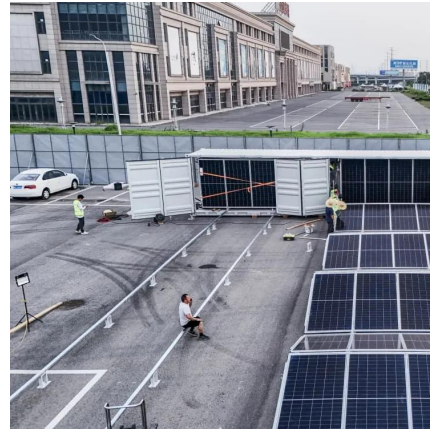


Base Stations and Cell Towers: The Pillars of Mobile Connectivity

Base stations use antennas mounted on cell towers to send and receive radio signals to and



from mobile devices within their coverage area. This communication enables ...



Unraveling the Mysteries of Cell Towers and Base Stations

The base stations are meant to improve the signal frequency and communication between interconnected devices such as computers or smartphones. On the other hand, a cell tower ...

BTS (base station transceiver)

BTS, or Base Station Transceiver, is a critical component in modern mobile communication networks. BTS is responsible for transmitting and receiving wireless signals ...



Blog -Communication Signal Tower Types & Design, Mobile Base Station

UHV (Ultra-High Voltage) transmission towers are structures designed to support high-voltage power lines for the transmission of electricity over long distances. UHV transmission systems ...



Base Transceiver Station: Core Functionality Explained

Discover what a Base Transceiver Station is and how it's pivotal in mobile communication networks. Unlock the essentials of BTS functionality here.



A Field Guide to American Communications Towers

Hot Dip Galvanized Three Legs Telecom Tower
Cellular antennas Cellular base stations consist of two main things: an array of bi-directional antennas operating on cellular ...

What is a Base Station?

Most base stations do not need special towers, and can be built directly on the existing roof. Generally, you can see a row of plate-shaped objects standing upright and ...



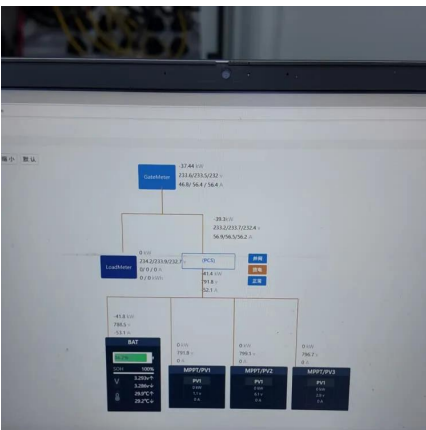
How do communication base stations work

Communication base stations, or cell towers, are vital for wireless networks. They consist of antennas, transceivers, controllers, and power supplies to transmit and receive signals.



Cellular tower locator

Cellular tower locator How to find your nearest cellular tower? RFNSA offer a detailed list of all available carriers throughout Australia. To determine which ...



Base Stations and Cell Towers: The Pillars of Mobile ...

Base stations use antennas mounted on cell towers to send and receive radio signals to and from mobile devices within their coverage area. ...

What is Telecommunication Base Station , China Hop

If there are few houses, a communication tower for hanging base stations will be specially built. At the top of the tower, there is a circle of rectangular plate-like things shining brightly, which is ...





Blog -Communication Signal Tower Types & Design,Mobile Base Station

The Wind Challenge: Why Tall Towers Tremble
High-rise communication towers face an invisible enemy: wind-induced vibrations. As towers grow taller to support 5G/6G antennas, their ...

A Field Guide To The North American Communications Tower

Technically speaking, they are called Base Transmitter Stations (BTS). You might see 'cell site' and 'cell tower' used interchangeably, but these terms are not synonymous. A ...



Blog -Communication Signal Tower Types & Design,Mobile Base ...

UHV (Ultra-High Voltage) transmission towers are structures designed to support high-voltage power lines for the transmission of electricity over long distances. UHV transmission systems ...



[What Are Base Station Antennas? Complete Guide](#)

Base station antennas are also known as cell site antennas and cellular antennas, and they are typically mounted on a tower or rooftop and ...



Communication tower foundation selection and design

According to the foundation design of two types of towers commonly used in the construction of communication base stations in Hebei ...



What Is A Base Station?

A base station, also known as a cell site or cell tower, is used for wireless communication. It is a fixed location equipped with antennas and other equipment that ...



What is Telecommunication Base Station , China Hop

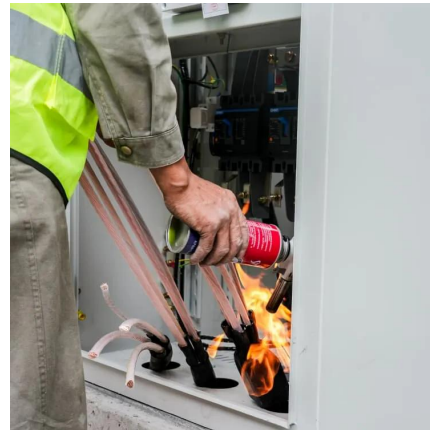
If there are few houses, a communication tower for hanging base stations will be specially built. At the top of the tower, there is a circle of rectangular plate-like ...





Introduction of base station and Remote Radio Unit

Base Station, generally refers to the "public mobile communication base station", (abbr.: BS), the base station is used to provide ...



Understanding Base Transceiver Stations: The Backbone of ...

How Base Transceiver Stations Work
Understanding how BTS functions demystifies mobile communication. This section outlines the processes involved in signal transmission and ...

Contact Us

For catalog requests, pricing, or partnerships, please visit:
<https://bringmethehorizon.eu>