



SolarMax Pro Energy Storage Systems

Base station communication link





Overview

In communications, a base station is a communications station installed at a fixed location and used to communicate as part of one of the following:

- a system, or;
- a system such as or .

A base station represents an access point for a wireless device to communicate within its coverage area. It usually connects the device to other networks or devices through a dedicated high bandwidth wire of fiber optic connection.



Base station communication link



Who Needs Basestations When We Have Sidelinks? , IEEE Communications

When a mobile device communicates in a cellular network, data is typically going in both uplink (UL) and downlink (DL) directions to a transceiver entity generally known as a ...

Understanding Base Station Controller Architecture: A ...

What is a Base Station Controller? A base station controller (BSC) is a vital component in the mobile telecommunications network that acts as the central hub for ...



Analyze the Types of Communication Stations , SpringerLink

Radio Base Stations (RBSs), which represent the access network and offer wireless communication link between mobile terminals and the core of the network. Mobile ...

What Is A Base Station?

A base station is an integral component of wireless communication networks, serving as a central point that manages the transmission and

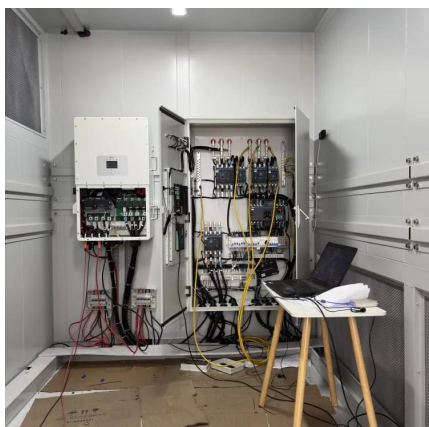


reception of signals between ...



Base station subsystem

The base station subsystem (BSS) is the section of a traditional cellular telephone network which is responsible for handling traffic and signaling between a mobile phone and the network ...



Base Station System Structure

The intent of this section is to explore the role of base stations in communications systems, and to develop a reference model that can be used to describe and compare base station software ...

SI110: Wireless Networking

What if a base station's (or host's) signal strength is insufficient to allow all the host stations I want on the network to communicate with the base station?



EMF

Mobile phones work by sending and receiving low power radio signals. The signals are sent to and received from antennas that are attached to radio transmitters and receivers, commonly ...



Aerial base station

An Aerial base station (ABS), also known as unmanned aerial vehicle (UAV)-mounted base station (BS), is a flying antenna system that works as a hub between the backhaul network ...

Tactical com: radio antenna installation and radio

Study with Quizlet and memorize flashcards containing terms like Never erected the antenna where powerlines could possibly sag or break and come into contact with the antenna or ...



Uplink and Downlink in mobile communications - ...

Downlink is the communication link from the base station to the phone. In CDMA networks, the downlink is called a forward channel, and the ...



Environmental Monitoring of Communication Base Station Based ...

...

Communication base stations are spread all over the country. Manually managed communication base stations are not only inefficient but also waste a lot of manpower and ...



Base Stations

Backhaul Connection: The backhaul connection links the base station to the core network in the mobile communication system. It provides for the interchange of data between ...

[Lecture Notes 12: Digital Cellular Communications](#)

Lecture Notes 12: Digital Cellular Communications Consider a cellular communications system with hexagonal cells each containing a base station and a number of mobile units.



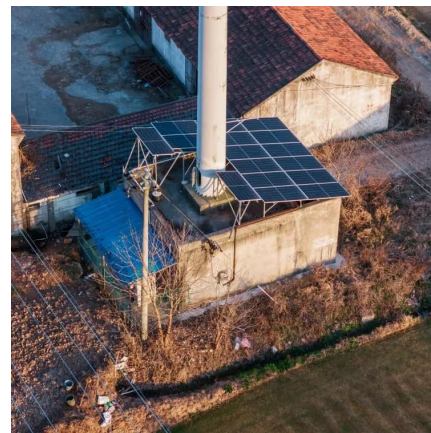


Uplink and Downlink in mobile communications - Commsbrief

Downlink is the communication link from the base station to the phone. In CDMA networks, the downlink is called a forward channel, and the uplink is called a reverse channel.

[Starlink Ground Stations: What They Are and How ...](#)

Starlink ground stations are the backbone of the satellite internet revolution, providing the crucial link between the heavens and earth



What is the function of the Base Station Subsystem (BSS) in GSM?

The Base Station Subsystem (BSS) is a crucial component of the GSM (Global System for Mobile Communications) architecture. It consists of the Base Transceiver Station ...

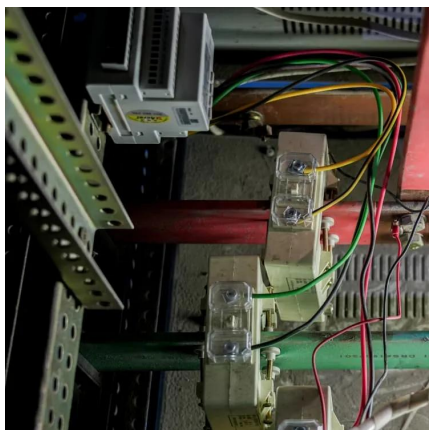
Base station

In professional two-way radio systems, a base station is used to maintain contact with a dispatch fleet of hand-held or mobile radios, and/or to activate one-way paging receivers. The base ...



Understanding the Base Station Subsystem: A Comprehensive ...

In the world of mobile telecommunications, understanding the Base Station Subsystem (BSS) is paramount for grasping how our everyday communications function ...



Cellular systems: multiple access and interference management

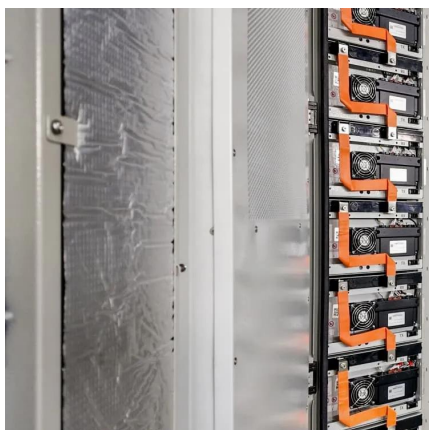
A cellular network consists of a number of fixed base-stations, one for each cell. The total coverage area is divided into cells and a mobile communicates with the base-station(s) close ...



Base station

OverviewWireless communicationsLand surveyingComputer networkingSee also

In radio communications, a base station is a wireless communications station installed at a fixed location and used to communicate as part of one of the following: o a push-to-talk two-way radio system, or;o a wireless telephone system such as cellular CDMA or GSM cell site.





Who Needs Basestations When We Have Sidelinks? , IEEE ...

When a mobile device communicates in a cellular network, data is typically going in both uplink (UL) and downlink (DL) directions to a transceiver entity generally known as a ...



No Link to Dispatcher Warning (Gen 3 SimpliSafe®)

Weather stations Large appliances that have radio frequency signals If your Base Station is close to any of the above devices, try moving it 3-5 feet away. Reset the Base Station In some ...

base transceiver station components

Backhaul Connection: The BTS needs to connect to the core network (like MSC, SGSN, or nowadays the evolved packet core in LTE/5G networks). This is typically done using ...



Contact Us

For catalog requests, pricing, or partnerships, please visit:
<https://bringmethehorizon.eu>