



**SolarMax Pro Energy Storage Systems**

## **Base station communication equipment identification**





## Overview

---

A base transceiver station (BTS) or a baseband unit (BBU) is a piece of equipment that facilitates between (UE) and a network. UEs are devices like (handsets), phones, computers with connectivity, or antennas mounted on buildings or telecommunication towers. The network can be that of any of the wireless communication technologies like , , , , or other

What is a radio base station?

In the world of radio communications, a radio base station plays a vital role in ensuring reliable and seamless communication across a wide area. Whether used in mobile networks, professional communication systems, or emergency response scenarios, base stations are essential for facilitating voice, data, and video transmissions.

What is a Base Transceiver Station (BTS)?

A base transceiver station (BTS) or a baseband unit (BBU) is a piece of equipment that facilitates wireless communication between user equipment (UE) and a network. UEs are devices like mobile phones (handsets), WLL phones, computers with wireless Internet connectivity, or antennas mounted on buildings or telecommunication towers.

What does a base station do?

It serves as the central hub that connects multiple user devices (such as radios, mobile phones, or IoT devices) to a network, enabling long-range communication. Base stations are equipped with transmitters and receivers, which help to send and receive radio signals to and from mobile devices.

What is a base station identity code (BSIC)?

The technical details of the Base Station Identity Code (BSIC) in the context of GSM (Global System for Mobile Communications): The BSIC is a crucial component in GSM networks. Its primary purpose is to uniquely identify a base station. Why is this necessary?

.



What are the components of a base station?

**Power Supply:** The power source provides the electrical energy to base station elements. It often features auxiliary power supply mechanisms that guarantee operation in case of lost or interrupted electricity, during blackouts. **Baseband Processor:** The baseband processor is responsible for the processing of the digital signals.

What are the different types of base stations?

Some basic types of base stations are as follows: Macro-base stations are tall towers ranging from 50 to 200 feet in height, placed at strategic locations to provide maximum coverage in a given area. Those are equipped with large towers and antennas that transmit and receive radio signals from wireless devices.



## Base station communication equipment identification

---



### Guide to Base Station Communications Equipment , Office of ...

This guide presents background information to help law enforcement agencies analyze their base station equipment needs and select superior equipment to provide reliable communication ...

### What is BSIC (Base Station Identity Code)

The BSIC is continuously transmitted on the broadcast channel (BCCH) by every base station. Mobile stations use this information to distinguish between ...



### Radio Base Stations for Secure Communication

Discover BelFone's advanced radio base stations designed for reliable, scalable, and secure communication. Perfect for public safety, industrial, and enterprise use, BelFone's solutions ...



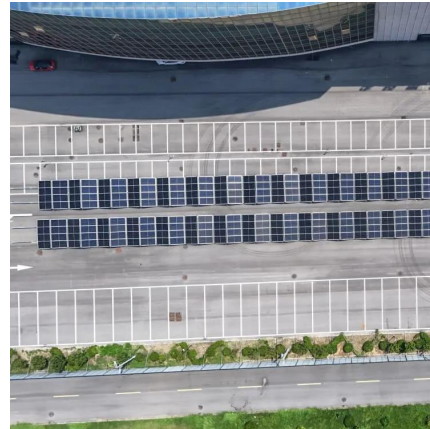
## Lesson 9 Mobile Forensics

A \_\_\_\_\_ handoff occurs when a cellular communication is conditionally handed off from one base station to another and the mobile





equipment is simultaneously communicating with ...



## 47 CFR 90.425

This includes station operating procedures, points of communication, permissible communications, methods of station identification, control requirements, and station record ...

## Types and Applications of Mobile Communication ...

Mobile communication base station is a form of radio station, which refers to a radio transceiver station that transmits information between mobile ...



## What is a Base Station in Telecommunications?

Discover the role and functionality of a base station in telecommunications networks. Learn how these critical components manage communication ...



## EMF

When base stations are located close to users, the transmitter power required by the mobile phone and the base station to communicate is relatively low. If base stations were located ...



## Ch. 12

The \_\_\_\_\_ is a set of radio transceiver equipment that enables communications between cellular devices and the mobile switching center (MSC). A. base transceiver station (BTS)

## eCFR :: 47 CFR 90.425 -

Alternatively, a base station (including a mobile relay station) which is controlled by radio may be identified by the transmission of the call sign of the station at which communications originate.



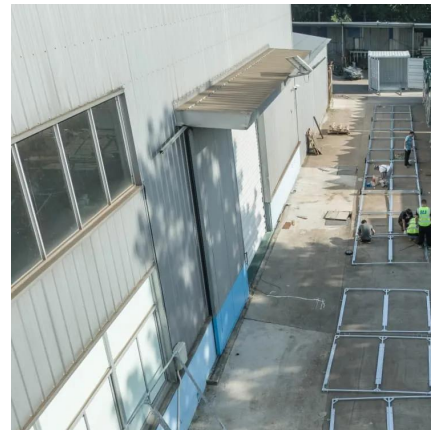
## [Shipborne Automatic Identification System \(AIS\)](#)

AIS base Station - Base stations are provided by an aids to navigation authority to enable the ship- to-shore/shore-to-ship transmission of information. ...



## Base Station System Structure

The intent of this section is to explore the role of base stations in communications systems, and to develop a reference model that can be used to describe and compare base station software ...



## Base transceiver station

A base transceiver station (BTS) or a baseband unit[1] (BBU) is a piece of equipment that facilitates wireless communication between user equipment (UE) and a network.

## Base transceiver station

A base transceiver station (BTS) or a baseband unit (BBU) is a piece of equipment that facilitates wireless communication between user equipment (UE) and a network. UEs are devices like mobile phones (handsets), WLL phones, computers with wireless Internet connectivity, or antennas mounted on buildings or telecommunication towers. The network can be that of any of the wireless communication







technologies like GSM, CDMA, wireless local loop, Wi-Fi, WiMAX or other

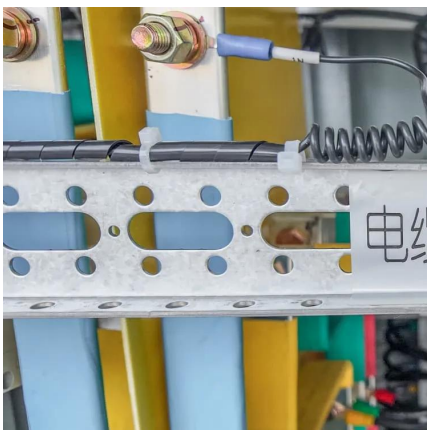
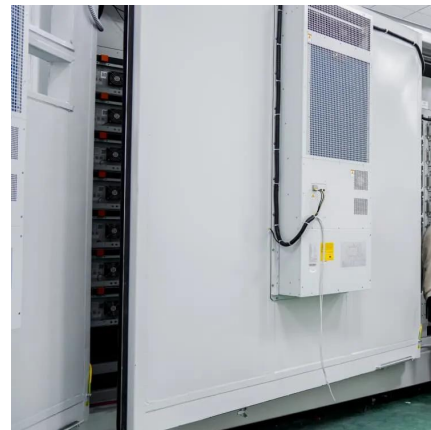


### **PNG BST30/35 Base Station**

The PNG system consists of one base station and one or more handheld rechargeable radios, chargers for the handhelds, as well as an optional control panel connected to the base station.

### **Base Stations and Cell Towers: The Pillars of Mobile Connectivity**

Base stations and cell towers are critical components of cellular communication systems, serving as the infrastructure that supports seamless mobile connectivity. These ...



### **Amateur Radio Products**

Region Amateur Radio Products Icom is a world leader in the amateur radio market. Also known as ham radio, Icom makes amateur radios for use in long-range (HF) and short-range (VHF, ...

### [Federal Communications Commission §9](#)

(4) Should activation of automatic Morse code identification equipment interrupt the communications of an-other co-channel licensee, the Commis-sion may require the use of ...





### What is BSIC (Base Station Identity Code)

The BSIC is continuously transmitted on the broadcast channel (BCCH) by every base station. Mobile stations use this information to distinguish between different base stations.



### **5G MIMO Antenna Designs for Base Station and User Equipment...**

5G multiple-input, multiple-output (MIMO) antenna systems will be an important pillar in realizing the new standard. The key advantages that MIMO provides are high data rate, low ...



## **Contact Us**

For catalog requests, pricing, or partnerships, please visit:  
<https://bringmethehorizon.eu>