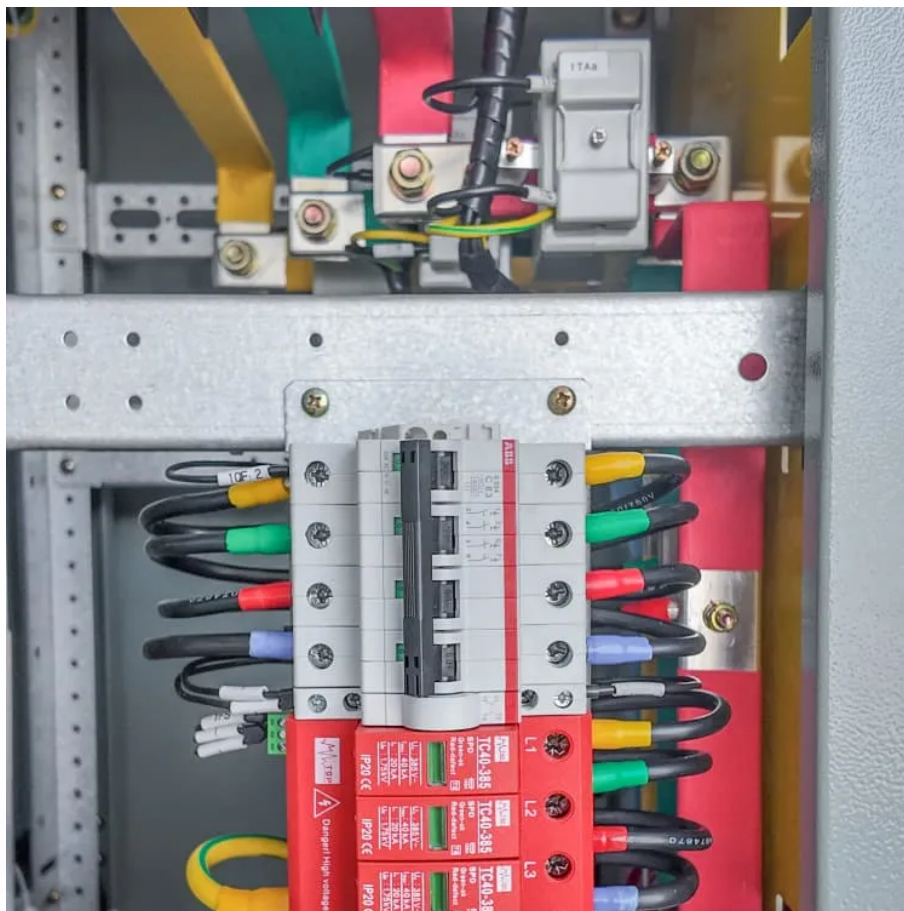


Base station battery location





Overview

How do you remove a battery from a base station?

To safely remove the battery from your SimpliSafe base station, you'll need a small Phillips head screwdriver. This tool will allow you to unscrew the securing screw that fastens the battery compartment cover in place.

Where is the battery located on a SimpliSafe base station?

The battery compartment on most SimpliSafe base stations is located on the bottom of the unit. To access the battery, you will need a small Phillips head screwdriver to unscrew the screw that secures the battery compartment cover.

How many batteries does the base station take?

The Base Station takes four (4) 1.2V, 1300mAh nickel-metal hydride (NiMH) rechargeable batteries. Regular alkaline batteries should never be inserted into the Base Station, as they may damage the device. Once you have acquired the necessary NiMH rechargeable batteries, you can follow the steps below to replace them:.

Where is the battery compartment located?

To remove the battery from your SimpliSafe Base Station, first locate the battery compartment on the bottom of the device. Once you've identified this area, proceed with the removal process using a small Phillips head screwdriver.

What type of batteries are used in the base station?

Inside the bottom of the base station are QTY (4) AA nickel-metal hydride rechargeable batteries (abbreviated NiMH or Ni-MH). Note, being RECHARGEABLE, there is a good chance that if you just keep the power on for several hours, they will be recharged.



Do I need to replace my base station's batteries?

If you're not certain which system you have, see the [Which Version of the SimpliSafe® System Do I Have](#) article. You will likely never need to replace your Base Station's batteries as they are rechargeable and meant to last. The Base Station takes four (4) 1.2V, 1300mAh nickel-metal hydride (NiMH) rechargeable batteries.



Base station battery location



[Where is SimpliSafe Battery Located? \(A Complete ...](#)

The SimpliSafe battery is located in the base station of the security system. To access the battery, you'll need to remove the screw at the bottom of the base ...

Base station operation guidelines

If semi-permanent or permanent operation is required, however, the modular receiver delivers significant advantages. Base station setup guidelines For good performance, observe the ...



[How to Remove Battery from Simplisafe Base Station](#)

Locate and Remove the Base Station Cover. Next, it's time to locate the battery compartment. On the SimpliSafe base station, the battery cover is located at the bottom of the ...

[?Base Station , SimpliSafe Support Home](#)

Base Station Battery Failure If there is a technical issue with the batteries, or if the Base Station is having trouble keeping them charged, you may



receive a Keypad warning or Base Station ...



[ADT System Batteries: Security System Battery Guide](#)

Get instructions on how to replace batteries in your ADT system, and ensure your security system's battery is working properly with this guide.



[SIMPLISAFE BASE STATION SETUP MANUAL Pdf Download](#)

All of your sensors are battery powered and the Base Station has a built-in rechargeable backup battery that provides power for up to 24 hours during a power outage.



[Technical Specifications for Ring Alarm Devices](#)

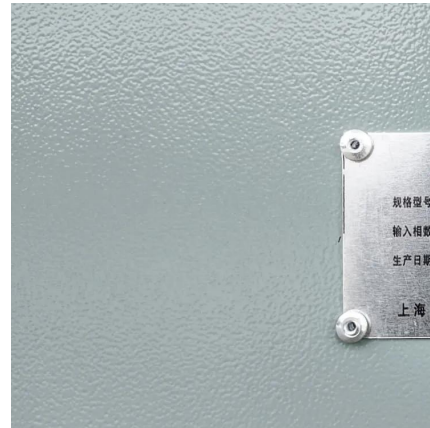
Technical Specifications for Ring Alarm Devices
Learn more about key technical specifications for Ring Alarm Devices like compatibility and battery life to ensure your Ring of Security performs ...





Replacing or upgrading your current Base Station with Ring ...

We've made it easier to replace and upgrade your Base Station from Ring Alarm to the new Ring Alarm Pro version. The Ring app will help you save all of your existing Ring Alarm devices and



How To Replace Base Station Batteries , SimpliSafe Support Home

The Base Station takes four (4) 1.2V, 1300mAh nickel-metal hydride (NiMH) rechargeable batteries. Regular alkaline batteries should never be inserted into the Base Station, as they ...

[How to Remove Battery from Simplisafe Base Station](#)

Place new battery into the compartment and insert the battery plug into the connector. NOTE: The battery plug is polarized and can only be inserted into the connector ...



?Changing batteries in base station , SimpliSafe Support Home

We can replace those batteries with actual NiMH rechargeables at no cost! It's actually pretty simple. You have to remove the power cord which will reveal a single screw on ...



[SIMPLISAFE BASE STATION OWNER'S MANUAL ...](#)

- o Indoor Installation: Adhere Siren in a central location within 100 ft. of the Base Station.
- o Outdoor Installation: Install within 100 ft of your Base Station.



[SIMPLISAFE BASE STATION OWNER'S MANUAL Pdf Download](#)

- o Indoor Installation: Adhere Siren in a central location within 100 ft. of the Base Station.
- o Outdoor Installation: Install within 100 ft of your Base Station.



Station Battery

To build a cascade of batteries (e.g. a stationary battery near solar panels and an APC at base power input), separate networks with transformers. Prefer a tree-like (or star-like) ...



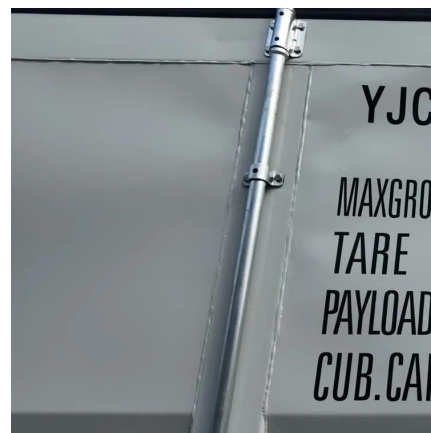


Ring Alarm (2nd Gen)

Top Articles Setting Up and Registering Your Base Station in the Ring App Add your Ring Alarm Base Station to your Devices in the Ring app to begin setting up your Ring Alarm system.

[Setting Up and Using Your Ring Alarm Pro Base Station](#)

BUILT-IN BATTERY BACKUP: The Base Station has an internal backup battery that will switch on when your power goes out. When the Alarm Pro Base Station is using the internal backup ...



[SIMPLISAFE BASE STATION SETUP MANUAL Pdf ...](#)

All of your sensors are battery powered and the Base Station has a built-in rechargeable backup battery that provides power for up to 24 hours during a ...

Optimum sizing and configuration of electrical system for

The rising demand for cost effective, sustainable and reliable energy solutions for telecommunication base stations indicates the importance of integration and exploring the ...



[How to Remove Battery from SimpliSafe Base Station](#)

Learn the step-by-step process to safely remove the battery from your SimpliSafe Base Station. Ensure your security system stays functional and efficient.



[Optimal configuration of 5G base station energy storage](#)

Abstract: The high-energy consumption and high construction density of 5G base stations have greatly increased the demand for backup energy storage batteries. To maximize overall ...



[Where is SimpliSafe Battery Located? \(A Complete Guide\)](#)

The SimpliSafe battery is located in the base station of the security system. To access the battery, you'll need to remove the screw at the bottom of the base station and detach the cover.





How to Remove SimpliSafe Base Station Battery? (Step-by-Step ...

To remove the battery from the SimpliSafe base station, start by unplugging the power adapter. Then, press the latch at the top of the base station and lift the cover to access the battery ...



Battery Replacement Instructions

Place new battery into the compartment and insert the battery plug into the connector. NOTE: The battery plug is polarized and can only be inserted into the connector ...

[18 SimpliSafe Base Station Known Problems \(Solved\)](#)

If your base station stops talking, rebooting the base stations will usually help fix the issue. To reboot your SimpliSafe base station, unplug it ...



[How to Remove Battery from SimpliSafe Base Station](#)

Learn the step-by-step process to safely remove the battery from your SimpliSafe Base Station. Ensure your security system stays functional ...



Contact Us

For catalog requests, pricing, or partnerships, please visit:
<https://bringmethehorizon.eu>