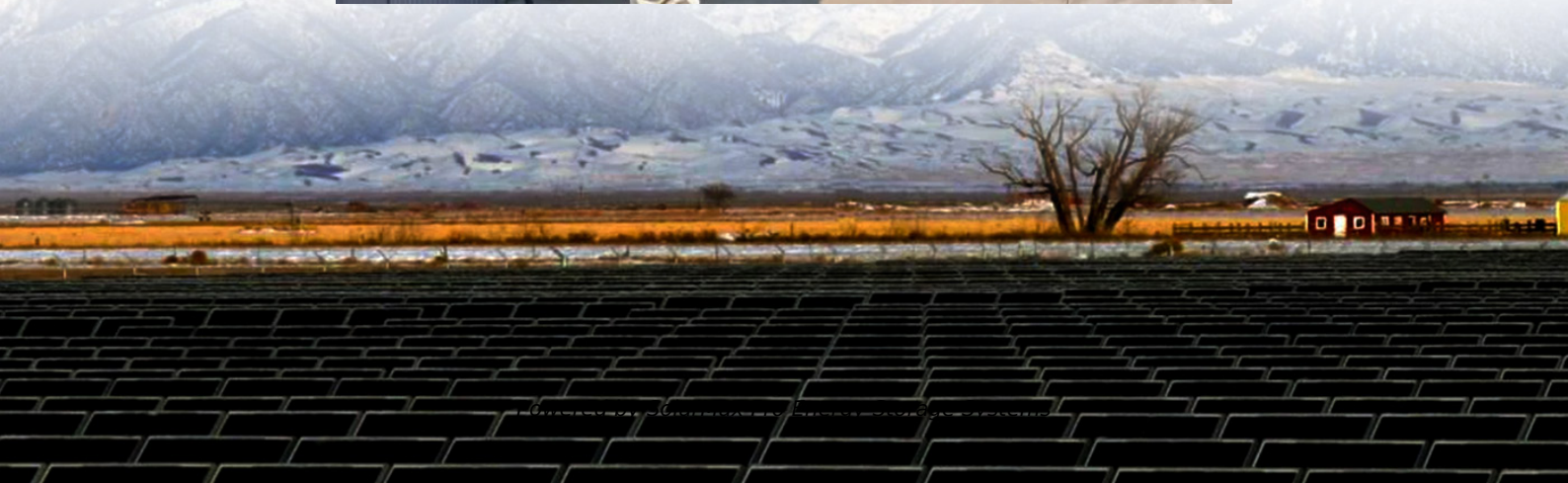




SolarMax Pro Energy Storage Systems

Backfill plan for the foundation of a seaside energy storage power station





Overview

What is backfilling in construction?

Backfilling is a critical process in construction, particularly in laying foundations for buildings. It involves refilling an excavated site with soil or other materials to provide support and stability to a structure. Proper backfilling ensures the longevity and integrity of the foundation, making it a vital aspect of construction projects.

What are the procedures for backfilling foundations for transmission line projects?

This document provides procedures for backfilling foundations for transmission line projects in a planned and controlled manner. It describes prerequisites like excavation drawings and equipment. The backfilling process is done in layers, with each layer leveled, wetted, and compacted before the next layer.

Do you have the Right Foundation for your energy storage project?

When it comes to energy storage projects, having the right foundation involves careful planning upfront. But each site is different, requiring careful consideration for details like the types of equipment being supported, site location and geologic factors.

What are the steps involved in backfilling a foundation?

Proper backfilling requires careful planning and execution to ensure the stability and longevity of the foundation. Here are the key steps involved in the backfilling process: Site Preparation: Before backfilling, the site must be properly prepared. This involves clearing debris, ensuring proper drainage, and compacting the subgrade.

What are the steps involved in the backfilling process?

Here are the key steps involved in the backfilling process: Site Preparation:



Before backfilling, the site must be properly prepared. This involves clearing debris, ensuring proper drainage, and compacting the subgrade. Foundation Inspection: Inspect the foundation to ensure it is properly constructed and cured.

What is the construction process of energy storage power stations?

The construction process of energy storage power stations involves multiple key stages, each of which requires careful planning and execution to ensure smooth implementation.



Backfill plan for the foundation of a seaside energy storage power s



BACKFILLING WORK PROCEDURE. MATERIAL , ...

This article is about Backfilling Work, Material, Foundation requirement, Backfilling Equipment, Compaction Requirement after backfilling, Risk ...

Construction method of backfill in layers for sea reclamation

The invention provides a construction method of backfill in layers for sea reclamation, which includes the steps: selecting shipborne machines; setting a middle cofferdam; distributing



Backfilling in a Foundation: 5 Benefits, Procedure, and ...

A. What is backfilling in a foundation? Backfilling in a foundation is the process of filling the excavated area around a foundation with soil or other ...

Chinese Scientists Support Construction of Salt Cavern Energy Storage

This photo shows a view of the surface structure



of salt cavern air storage inside the 300 MW compressed air energy storage station in Yingcheng City, central China's Hubei ...

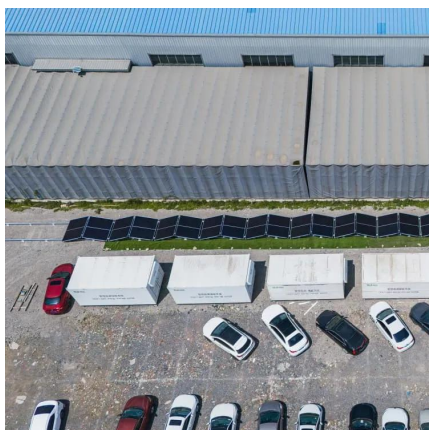


Analysis of the galleries cracking causes in the backfill area of

Pumped storage power stations usually arrange galleries in the backfill area at the bottom of the reservoir basin. Under the influence of uneven deformation, the galleries may be difficult to ...

Energy Storage Power Station Container Foundation Diagrams: ...

Ever wondered what keeps those massive battery containers from doing the electric slide during extreme weather? Enter the energy storage power station container foundation diagram - the ...



Identifying the Right Solutions for Energy Storage ...

When it comes to energy storage projects, having the right foundation involves careful planning upfront. But each site is different, ...



[Energy Storage Power Station Design Documents: A ...](#)

Let's face it: energy storage power station design documents aren't exactly beach reading. But for engineers, project managers, and investors, they're the holy grail of grid-scale battery projects.

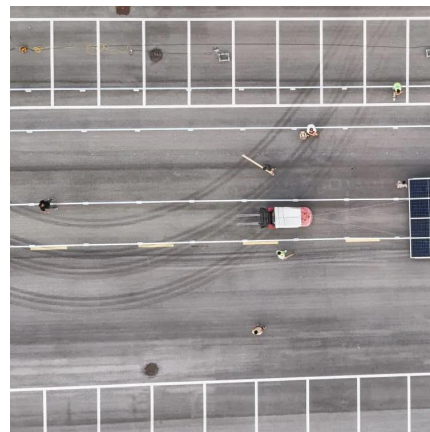


Foundation design of container energy storage power station

The Battery Energy Storage System (BESS) container design sequence is a series of steps that outline the design and development of a containerized energy storage system.

Energy Storage Power Station Buried in the Pit: The Underground

Imagine storing enough electricity to power 60,000 homes in an abandoned salt mine. That's exactly what China's Jintan Salt Cavern Compressed Air Energy Storage Project achieves [7]. ...



[Battery storage power station - a comprehensive guide](#)

The guide covers the construction, operation, management, and functionalities of these power stations, including their contribution to grid stability, peak ...



How is the energy storage power station installed?

1. Energy storage power stations are installed through carefully planned steps, beginning with site selection, then moving on to design and ...



Analysis of energy storage power station investment and benefit

In order to promote the deployment of large-scale energy storage power stations in the power grid, the paper analyzes the economics of energy storage power stations from three aspects of ...

Battery storage power station - a comprehensive guide

The guide covers the construction, operation, management, and functionalities of these power stations, including their contribution to grid stability, peak shaving, load shifting, and backup ...



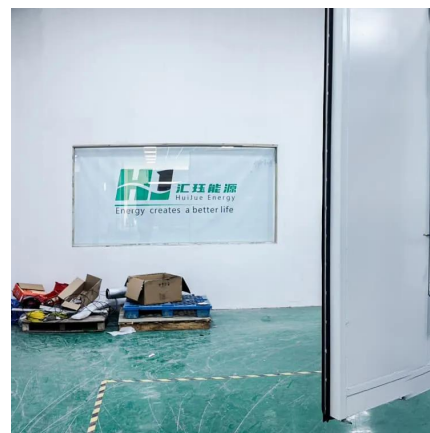


[Shanghai Pudong Seaside Waste Energy Power Plant Map](#)

Shanghai Pudong Seaside Waste Energy Power Plant is a power station in Shanghai, East China. Shanghai Pudong Seaside Waste Energy Power Plant is situated nearby to the power station ...

Section II - Structure Excavation and Backfill For Pump Station

Prior to commencing the excavation, the Contractor shall submit a plan of his proposed operations to the Engineer for approval. The Contractor shall consider, and his plan for excavation shall ...



[Backfilling in Foundation: Types and Procedures](#)

Proper backfilling ensures the longevity and integrity of the foundation, making it a vital aspect of construction projects. This article explores the types of backfilling materials, the ...

[Backfilling in Foundation: Types and Procedures](#)

Proper backfilling ensures the longevity and integrity of the foundation, making it a vital aspect of construction projects. This article ...



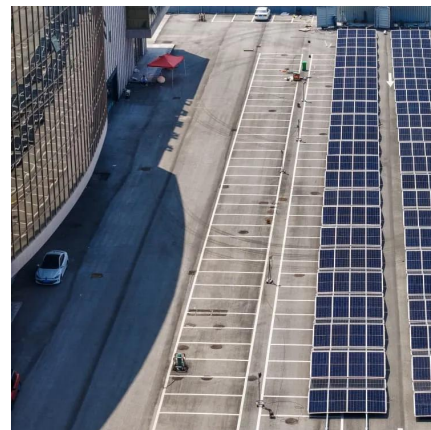
What does the civil construction of energy storage ...

This is crucial as the foundation must accommodate the significant weight of storage units, transformers, and ancillary equipment. A thorough ...



Energy storage power station foundation construction process

Firstly, this paper proposes the concept of a flexible energy storage power station (FESPS) on the basis of an energy-sharing concept, which offers the dual functions of



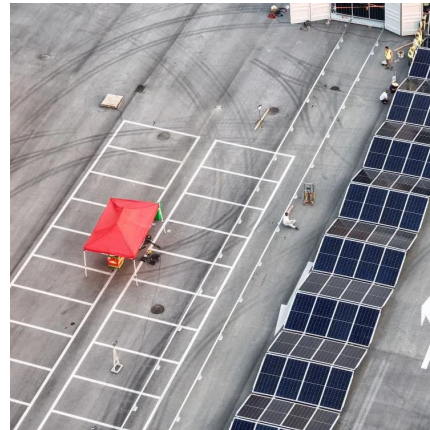
How to Backfill a Foundation

It's not about curb appeal, but the way you backfill a foundation makes a difference to a home's real value. Good backfill should be well-compacted and stable to ensure it won't ...



Modeling Energy Storage's Role in the Power System of the ...

Parallels prior NY studies in all other regards:
Replicates assumptions and data sources used in NY's Climate Action Council Scoping Plan and the Storage Roadmap as much as possible ...



Identifying the Right Solutions for Energy Storage Foundations

When it comes to energy storage projects, having the right foundation involves careful planning upfront. But each site is different, requiring careful consideration for details ...

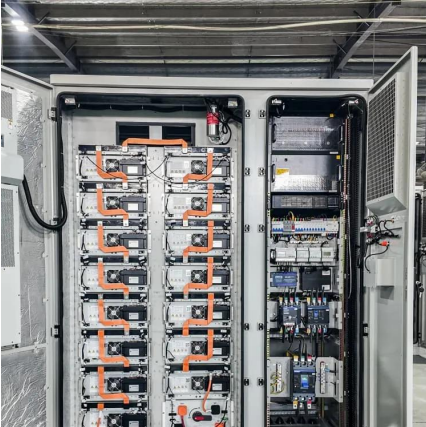
[SOP-0013-Standard Operating \(Work\) Procedure](#)

This document provides procedures for backfilling foundations for transmission line projects in a planned and controlled manner. It describes prerequisites like excavation drawings and ...



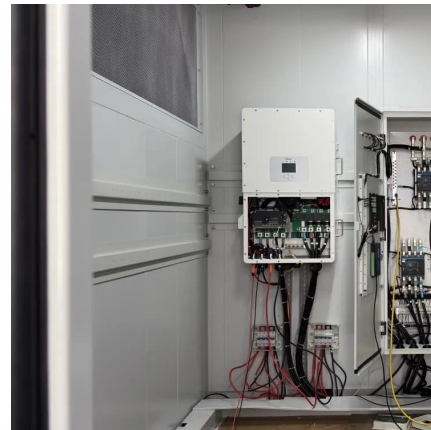
What does the civil construction of energy storage power station

This is crucial as the foundation must accommodate the significant weight of storage units, transformers, and ancillary equipment. A thorough understanding of the terrain ...



[SOP-0013-Standard Operating \(Work\) Procedure](#)

This document provides procedures for backfilling foundations for transmission line projects in a planned and controlled manner. It describes prerequisites ...

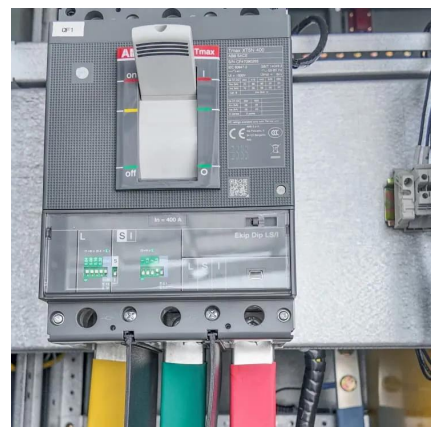


[A Glimpse of Jinjiang 100 MWh Energy Storage ...](#)

China Central Television (CCTV) recently aired the documentary Cornerstones of a Great Power, which vividly describes CATL's efforts in the ...

[PGE procures 400MWAC of battery energy storage ...](#)

Through the new battery energy storage facilities, PGE aims to optimise renewable power in its portfolio and deliver electricity even when ...





Contact Us

For catalog requests, pricing, or partnerships, please visit:
<https://bringmethehorizon.eu>