



SolarMax Pro Energy Storage Systems

Accessing an outdoor base station





Accessing an outdoor base station



[XIAOMI MJSXJ07BY USER MANUAL Pdf Download , ManualsLib](#)

Product Overview The Xiaomi Outdoor Camera Base Station provides smart online protection, ensuring a stable and safe home environment. With advanced features and exceptional ...

X4000 5G RAN 'All-in-One' gNodeB

X4000 5G SDR Small Cell Outdoor base stations enjoy great flexibility, high performance as well as very low cost of operation and ownership. "Stand ...



Radio access networks , Nokia

5G and Radio Access Networks The adoption of 5G is happening faster than any previous cellular technology. For consumers, 5G offers services ranging from ...

[Optimize Enterprise Communication with SIP-DECT](#)

Enhance your enterprise communication strategy with SIP-DECT base stations, ensuring robust



connectivity and improved scalability for your business.



KuWFi Waterproof Base Station Access Point 750Mbps Wireless ...

the video show you how to use the KuWFi Waterproof Base Station 1.KuWFi-AP610H is an 11ac dual band Outdoor wireless access point with 750Mbps data rate, It comply with IEEE 802.11ac/b/g/n



WBS510 , 5GHz 300Mbps Outdoor Wireless Base Station , TP-Link

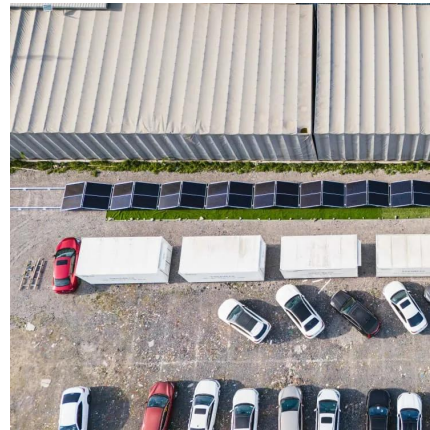
The TP-LINK Outdoor Wireless Base Station pairs professional performance with user-friendly design, making it the perfect solution for both business and home users.





KuWFi Waterproof Base Station Access Point 750Mbps Wireless

the video show you how to use the KuWFi Waterproof Base Station 1.KuWFi-AP610H is an 11ac dual band Outdoor wireless access point with 750Mbps data rate, It comply ...



B6 5GHz 11n 300Mbps Basestation

TD-MAX is Tenda TDMA (Time Division Multiple Access) proprietary protocol to improve performance and capacity for wireless WISP outdoor application scenarios. In outdoor ...

[CableFree Outdoor 4G & 5G LTE SDR Small Cell ...](#)

Experience CableFree's 4G & 5G LTE Small Cell outdoor base stations with software-defined radio for great flexibility, high performance & low operation ...



[How to Set Up Your Wyze Outdoor Camera Without a ...](#)

Setting up your Wyze outdoor camera without a base station is easy, and the first task is connecting to Wi-Fi. Begin by downloading the Wyze ...



Outdoor Camera Base Station User Manual

Turning on: Connect the charging cable and a power adapter with an output of $5\text{ V} = 2\text{ A}$, and then the base station will automatically turn on when the power is switched on. Turning off: ...



Outdoor Station

ZKTeco's VEX-B25L is a smart outdoor video station that seamlessly integrates video intercom capabilities with RFID card reading and PIN code password verification, offering a ...



Base stations and networks

Base station output power is relatively low The antenna output power level is typically between 20 watts and a few hundred watts for an outdoor base station. Television transmitters, by ...



Pairing a Base Station: A Comprehensive Guide to Seamless ...

In this article, we'll delve into the world of base station pairing, exploring the different types of base stations, the pairing process, and troubleshooting tips to help you overcome ...

X4000 5G RAN 'All-in-One' gNodeB

X4000 5G SDR Small Cell Outdoor base stations enjoy great flexibility, high performance as well as very low cost of operation and ownership. "Stand Alone" operation is possible which ...



Alcatel-Lucent 8378 DECT IP-xBS

The IP-xBS base stations pair with Alcatel-Lucent DECT handsets to deliver expert communication features (such as, dial-by-name and multi-line management) from ALE ...

[WBS510 , 5GHz 300Mbps Outdoor Wireless Base ...](#)

The TP-LINK Outdoor Wireless Base Station pairs professional performance with user-friendly design, making it the perfect solution for both ...



Wyze Base Station Setup Guide

Wyze Base Station is the communication hub for your Wyze Cam Outdoor and it is necessary for it to talk to your network. New to Wyze? Before starting, download the Wyze app ...

How do I set up local storage backups using my Arlo SmartHub or Base

WARNING: Do not use the Arlo SmartHub or Base Station to format storage devices with more than 2 TB of storage capacity. The Base Station formats storage devices using the ...



About the Wyze Base Station

This lets you connect up to four (4) Wyze Cam Outdoor cameras to your Base Station at home, then take the camera (s) to a remote location (as long as it's still plugged into ...



Contact Us

For catalog requests, pricing, or partnerships, please visit:
<https://bringmethehorizon.eu>