



**SolarMax Pro Energy Storage Systems**

## **96V battery cabinet connection**





## Overview

---

How do I connect a battery cabinet to an ups?

Connect the DC+ and DC- cables to the DC+ and DC- terminals. Connect the power cables in the UPS. If more battery cabinets are part of the solution, connect all battery cabinets to the UPS according to the diagram below.

How do I connect a battery to a cabinet?

requirements, see paragraph 3.2.3 on page 15, Table 4-1, and Figure 4-8. In the first battery cabinet, locate the battery-cabinet-to-battery-cabinet Shunt Trip and Aux battery interface cable with connector P3. Route this connector into the next cabinet and mate with the matching J3 connector in that cabinet (see Figure 4-8).

Where is the battery cabinet located?

The location for the battery cabinet is on the right side of the UPS cabinet. This location will allow for future expansion using an external module. Cabinets can be permanently bolted to the floor or left standing on leveling feet. Power and control wiring can be routed through the top or bottom of the cabinet depending on installation.

What is a battery cabinet?

The battery cabinet is installed in a standalone configuration. The term standalone refers to battery cabinets that may be installed adjacent to the UPS or in a separate location, are wired with external customer-supplied conduit and wiring, and may use the battery cabinet breaker as the battery isolation device or a switch.

How many volts should a battery cabinet have?

600V. The wiring should be a minimum of 18 AWG rated at 48V, 1 A minimum. All interface wiring between the UPS and battery cabinet is to be provided by the customer. When installing external interface wiring (for



example, battery breaker shunt trip) to the battery cabinet interface terminals.

How many cabinets can be installed on A Powerware 9395 Battery Cabinet?

single battery voltage range is available to meet application runtime needs. Up to four cabinets may be installed to further extend battery runtimes. The cabinets match the UPS cabinet in style and color. Figure 1-1 shows the Powerware 9395 Model IBC-L Battery Cabinet. A DC-rated circuit



## 96V battery cabinet connection

---



### Connect the Power Cables

Connect the DC+ and DC- cables to the DC+ and DC- terminals. Connect the power cables in the UPS. If more battery cabinets are part of the solution, connect all battery cabinets to the UPS ...

### [96V 100Ah 200Ah pack LiFePO4 Power 96 volt ...](#)

Like most popular 96v 200ah battery, 96v 100ah battery or 250Ah. Coremax developed and help other company on 96v battery pack to build OEM brand ...



### Wiring a sourced 96v battery for a QS205 5000w Bike Build

If you follow the link and look at the wiring diagram, it seems like it would be easy to add a BMS to a single sandwiched pair (26s4p) with the connections and binding posts.

### Battery Cabinet

This manual contains information on Atlantic Battery Systems battery cabinets. The information in this manual is intended for



Qualified Installers, Equipment Engineers, and Field Support ...

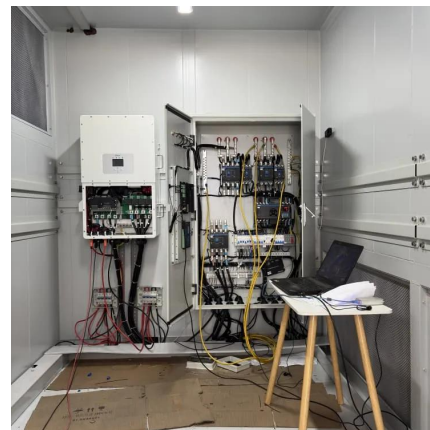


### [NetSure\(TM\) 211 Series -48 VDC Battery Cabin](#)

Connect the power system's battery cable terminated in an Anderson connector to the first battery cabinet's battery cable terminated in a mating Anderson connector.

### [96V 6kWH Lithium \(LFP\) Battery For UPS/Inverter, 5 ...](#)

Introducing our 96V 6kWh Lithium Battery Pack - a high-capacity energy solution for your normal and solar inverters. With a charging amp of ...



### [96V 192V 50AH 100AH High voltage Battery Cabinet](#)

High voltage Battery Cabinet using Li-ion Energy Storage Pack Our high voltage power cabinet for outdoor use, uses the high quality lithium battery which is the secondary battery. Would you ...



### [APC Smart UPS SRT 96V Tower Battery Pack for ...](#)

APC Smart UPS SRT 96V Tower Battery Pack for 3kVA: SRT96BP Protect your data and hardware from electrical power outages and current fluctuations. ...



### [Powerware 9395 Integrated Battery Cabinet \(Model IBC-L\)](#)

Use this procedure to install the battery cabinet. The battery cabinet shown in Figure 4-2 is located adjacent to the UPS cabinet, but may be located in a separate location.

### **Two 48V banks in series for 96V with Off-The-Shelf Equipment**

If you can find a 32S BMS that supports building a 96V LiFePO<sub>4</sub> battery from 32 3.2V cells then you can have a 96V LiFePO<sub>4</sub> battery. Or if you can find two 48V LiFePO<sub>4</sub> ...



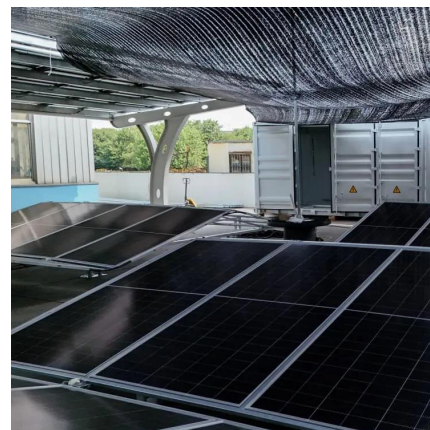
### **User Manual Eaton 9SXEBM96**

- Disconnect charging source prior to connecting or disconnecting battery terminals.
- Determine if battery is inadvertently grounded. If inadvertently grounded, remove ...



### [48V 96V Lithium Ion Battery Home Powerwall Storage ...](#)

48V 96V Lithium Ion Battery Home Powerwall Storage Batteries 400AH 800AH 20KWH 40KWH Cabinet Key Features of Lithium Battery Cabinet  
1. Integrated ...



### [UPS Installation Guide-Custom Lithium ion Battery ...](#)

ups unpacking, battery unpacking for backup, When assembling the battery cabinet, pay attention not to touch the positive and negative poles ...

### **Powerware 9390 Integrated Battery Cabinet (Models IBC-S ...**

Locate the battery cabinet-to-battery cabinet breaker sensing cable in the first battery cabinet. Route this connector into the cabinet to the immediate left and mate with the matching ...





### [DELL Smart-UPS SRT 96V 3kVA RM Batt Pack](#)

Shop for the Dell Battery Cabinet at ManMade Cycle. 96V DC, Lead Acid, maintenance-free, sealed & leak-proof. Perfect for your tech trade-ins & buybacks.

### **Smar tPack-Batter y**

It includes battery connection cables, breaker, terminal, etc, with max. capacity of 16pcs 12V/7Ah or 12V/9Ah batteries inside. The battery connection could be configured to output  $\pm 96V$ , two ...

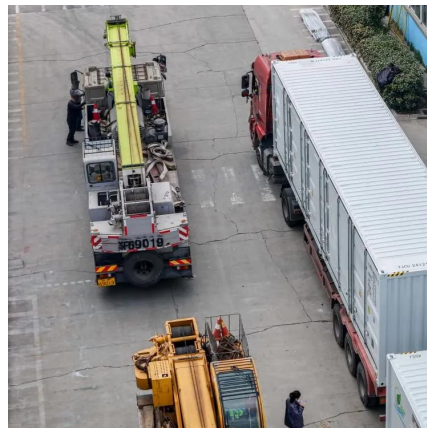


### **APC Smart-UPS On-Line SRT Battery Pack for 3kVA Extended runtime model 96V**

This APC Smart-UPS battery pack connected with SRT On-Line UPS, provides extended runtime to SRT mission critical applications. This 96V SRT extendable runtime battery pack is ...

### **Print**

Do not move or shift the cabinet once installed without first disconnecting load to the cabinet and all inter cabinet connections. Refer wiring diagrams for location of these connections. Do not ...



### **LiFeMnPO4 Prismatic Battery, Charger and BMS Package: 96V, ...**

LiFeMnPO4 Prismatic Battery, Charger and BMS Package: 96V, Choose from: 40Ah, 60Ah, 100Ah or 200Ah (w/ CAN) - UN38.3 (12.8V x 8 DGR)



### **BU-302: Series and Parallel Battery Configurations**

BU-302: Configuraciones de Baterías en Serie y Paralelo (Español) Batteries achieve the desired operating voltage by connecting several cells in series; ...



### **How to Charge a 96V Lithium Battery: A Comprehensive Guide**

Charging a 96V lithium battery correctly involves using the right charger, following proper connection procedures, setting appropriate parameters, and adhering to safety protocols.





## Contact Us

---

For catalog requests, pricing, or partnerships, please visit:  
<https://bringmethehorizon.eu>