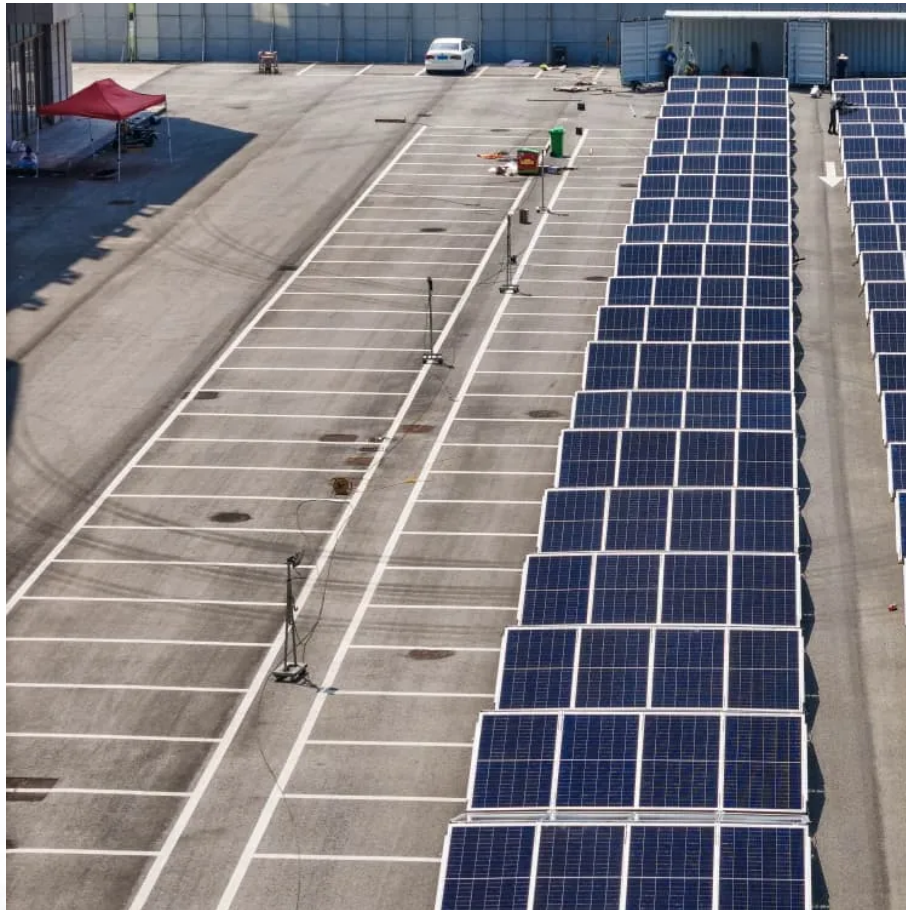




SolarMax Pro Energy Storage Systems

660wp photovoltaic module price





Overview

The price depends on several factors: Current Market Prices: On average, one panel costs between \$500 and \$800. Factors Affecting Price: Brand reputation, panel quality, warranty terms, and installation costs.



660wp photovoltaic module price

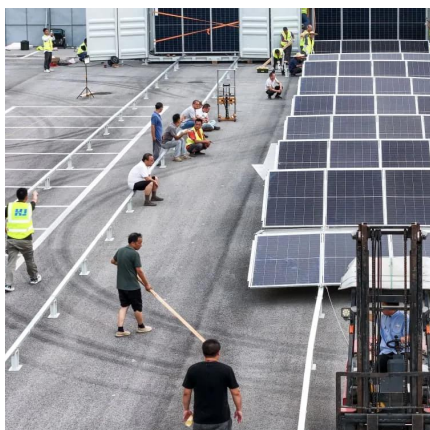


[LonGi 660W Solar Panel \(LR7-72HYD-660M\) - TSolar](#)

The LonGi 660W Solar Panel delivers superior energy efficiency with its bifacial design and advanced TaiRay wafer & BC-CELL technology, making it an ideal solution for utility-scale ...

[Mono PERC Bifacial Double Glass Photovoltaic Solar ...](#)

Based on 210mm silicon wafer and 132 half-cut mono-crystalline PERC cell, the Evo 6 Series photovoltaic panels comes with several innovative design ...



Ac Module Longi Mono Crystalline 500Wp 550Wp 660Wp High ...

Ac Module Longi Mono Crystalline 500Wp 550Wp 660Wp High Wattage Solar Photovoltaic Panel For Home Electricity, Find Details and Price about Solar Photovoltaic Panel Set Panel Solar ...

Vertex 670W TSM-DEG21C.20

Vertex 670W TSM-DEG21C.20 Based on the 210mm large-size silicon wafer and monocrystalline PERC cell, the innovative Vertex



allows high power output up to 670W.



Mono PERC Bifacial Double Glass Photovoltaic Solar Panel ...

Based on 210mm silicon wafer and 132 half-cut mono-crystalline PERC cell, the Evo 6 Series photovoltaic panels comes with several innovative design features allowing higher output ...



PV Module 650wp 655wp 660wp Manufacturer Monocrystalline Photovoltaic

PV Module 650wp 655wp 660wp Manufacturer Monocrystalline Photovoltaic Solar Panel, Find Details and Price about PV Solar Panel Solar Panel 1000W from PV Module 650wp 655wp ...



[Risen Mono PERC 660Wp Titan Solar Panel - ...](#)

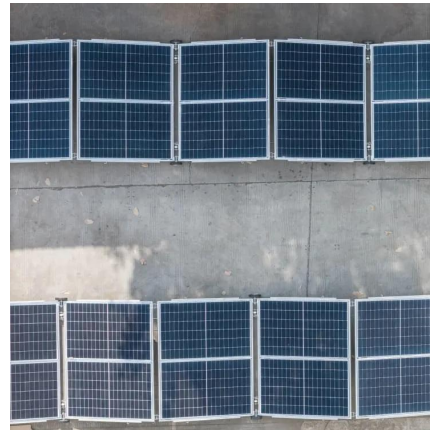
660Wp Risen monocrystalline photovoltaic module with PERC (Passive Emitter Rear Cell) technology with 21,2% module efficiency. This Risen solar panel ...





Solar Panel Bifacial Half-cut Monocrystalline 660 Wp

SOLAR PANEL 660 WATTS , TRINA SOLAR ,
Bifacial Half-cut , Monocrystalline , 132 Cells PV
Module , Power tolerance 0/+5W , L 2384 mm, W
1303 mm, D 33 mm , 38.30 kg , Material ...



Vertex 670W Ultra-High Power Module , Trina Solar US

Power up with the Vertex 670W TSM-DEG20C.20,
a technological breakthrough in solar modules
boosting efficiency and power output by over
41%.



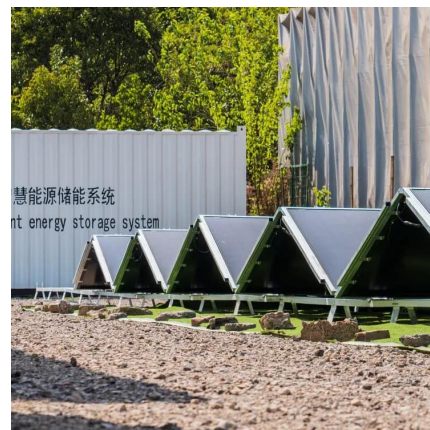
Trina Solar TSM-660DEG21C.20 Glass- Glass Bifacial

The Bifacial dual glass high efficiency TSM-
DEG21C.20-660W solar module from Trina comes
with an extensive 30-years warranty, assuring
you of its quality and reliability throughout its ...



660W/670W/680W All Black Monofacial PERC PV Module For ...

With an efficiency of up to 22.06 % and an output of 655W to 685W, this SP685M-66H all-black solar module ensures maximum energy generation, making it ideal for residential and ...



Solar PV Module Excellence , Pixon Manufacturing

Pixon leads in solar PV module manufacturing, offering high-performance solutions for India's renewable energy needs. Expertly engineered for efficiency and reliability.

Risen Mono PERC 660Wp Titan Solar Panel - DISTRIISMA

660Wp Risen monocrystalline photovoltaic module with PERC (Passive Emitter Rear Cell) technology with 21,2% module efficiency. This Risen solar panel has a positive power ...





[How much does a 660 watt solar panel cost? , NenPower](#)

A 660-watt solar panel typically has a cost range between \$1,200 and \$2,000, influenced by factors such as brand, technology, installation ...

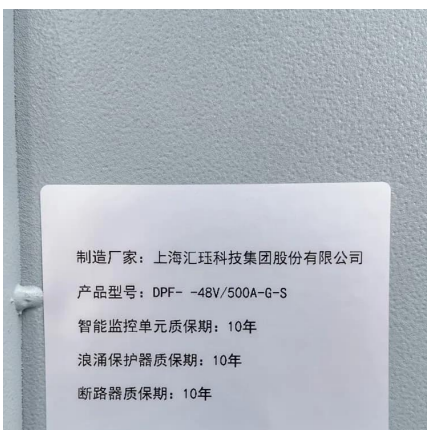
[What is WP in Solar Panels? Understanding Watt ...](#)

But what does it mean, and why does it matter? Understanding solar panel watt peak is crucial for evaluating solar panel efficiency, ...



Canadian Solar Releases New TOPCon 2.0 / 660 Wp N-Type Module ...

Canadian Solar Releases New TOPCon 2.0 / 660 Wp N-Type Module with up to 24.4% Efficiency for Utility and C& I PV Systems



[Amerisolar , AS-8M132-HC-640-665W , Solar Panel ...](#)

Amerisolar EU Solar Panel Series AS-8M132-HC-640-665W. Detailed profile including pictures, certification details and manufacturer PDF



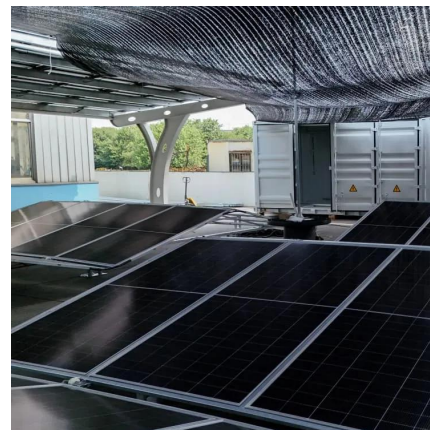
[How much does a 660 watt solar panel cost? , NenPower](#)

A 660-watt solar panel typically has a cost range between \$1,200 and \$2,000, influenced by factors such as brand, technology, installation expenses, and geog...



Large Solar Panels Mono 650W 660W 680W 685W Half Cut ...

We are best Large Solar Panels Mono 650W 660W 680W 685W Half Cut 132Cells Monocrystalline PV suppliers,we supply best 650w solar panel for sale.



Longi 650wp 660wp 670wp N Type Topcon Bifacial Solar Panel Price ...

A: The LONGi Hi-MO X10 is a premium product built on the revolutionary HPBC 2.0 cell technology. It leads in terms of power generation performance, reliability, and customer ...





[Trina Solar 660W+ series modules in world first with ...](#)

The Vertex 660W+ modules have greater scope for reducing BOS costs and photovoltaic power LCOE, and this will help accelerate the PV ...



CS-Datasheet

CSI Solar Co., Ltd. is committed to providing high quality solar photovoltaic modules, solar energy and battery storage solutions to customers. The company was recognized as the No. 1 module ...

[AESOLAR , AE ME-132 640-660W , Solar Panel ...](#)

AE Alternative Energy GmbH Solar Panel Series AE ME-132 640-660W. Detailed profile including pictures, certification details and manufacturer PDF



Longi 650wp 660wp 670wp N Type Topcon Bifacial Solar Panel ...

A: The LONGi Hi-MO X10 is a premium product built on the revolutionary HPBC 2.0 cell technology. It leads in terms of power generation performance, reliability, and customer ...



Contact Us

For catalog requests, pricing, or partnerships, please visit:
<https://bringmethehorizon.eu>