

# **5g network base station power consumption**





## Overview

---

To understand this, we need to look closer at the base station power consumption characteristics (Figure 3). The model shows that there is significant energy consumption in the base station.

Do 5G base stations consume a lot of energy?

The energy consumption of the fifth generation (5G) of mobile networks is one of the major concerns of the telecom industry. However, there is not currently an accurate and tractable approach to evaluate 5G base stations' (BSs') power consumption.

How much power does a 5G station use?

The power consumption of a single 5G station is 2.5 to 3.5 times higher than that of a single 4G station. The main factor behind this increase in 5G power consumption is the high power usage of the active antenna unit (AAU). Under a full workload, a single station uses nearly 3700W.

Is 5G more energy efficient than 4G?

Although the absolute value of the power consumption of 5G base stations is increasing, their energy efficiency ratio is much lower than that of 4G stations. In other words, with the same power consumption, the network capacity of 5G will be as dozens of times larger than 4G, so the power consumption per bit is sharply reduced.

Why does 5G use so much power?

The main factor behind this increase in 5G power consumption is the high power usage of the active antenna unit (AAU). Under a full workload, a single station uses nearly 3700W. This necessitates a number of updates to existing networks, such as more powerful supplies and increased performance output from supporting facilities.

Should power consumption models be used in 5G networks?

This restricts the potential use of the power models, as their validity and



accuracy remain unclear. Future work includes the further development of the power consumption models to form a unified evaluation framework that enables the quantification and optimization of energy consumption and energy efficiency of 5G networks.

What is a 5G base station?

A 5G base station is mainly composed of the baseband unit (BBU) and the AAU — in 4G terms, the AAU is the remote radio unit (RRU) plus antenna. The role of the BBU is to handle baseband digital signal processing, while the AAU converts the baseband digital signal into an analog signal, and then modulates it into a high-frequency radio signal.



## 5g network base station power consumption

---

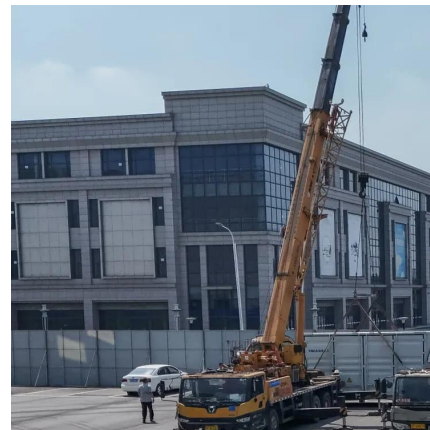


### Comparison of Power Consumption Models for 5G Cellular Network Base

Download Citation , On Jul 1, 2024, Alexander M. Busch and others published Comparison of Power Consumption Models for 5G Cellular Network Base Stations , Find, read and cite all the ...

### Modelling the 5G Energy Consumption using Real-world Data: ...

This paper proposes a novel 5G base stations energy consumption modelling method by learning from a real-world dataset used in the ITU 5G Base Station Energy ...



### Comparison of Power Consumption Models for 5G Cellular ...

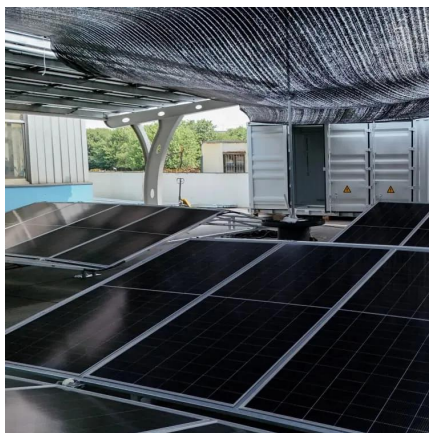
In order to quantify and optimize the energy consumption of mobile networks, theoretical models are required to estimate the effect of relevant parameters on the total ...

### What is 5G Energy Consumption?

5G Base Station Power Consumption: With each base station carrying at least 5X more traffic and operating over more frequency bands, 5G base



station power consumption is at least twice ...



### 5G Transmit Power and Antenna radiation

To keep the power density per MHz similar to LTE systems, the 100MHz 3.5GHz spectrum will require 5x 80 W, which is not easy to be achieved. 5G trials ...

### How Much Power Does 5G Base Station Consume?

Have you ever wondered how much energy our hyper-connected world is consuming? 5G base stations, the backbone of next-gen connectivity, now draw 3-4 times more power than their 4G ...



### **Power Consumption Modeling of 5G Multi-Carrier Base Stations: ...**

However, there is still a need to understand the power consumption behavior of state-of-the-art base station architectures, such as multi-carrier active antenna units (AAUs), ...





## Front Line Data Study about 5G Power Consumption

The power consumption of a single 5G station is 2.5 to 3.5 times higher than that of a single 4G station. The main factor behind this increase in 5G power consumption is the high power ...



## **Modelling the 5G Energy Consumption using Real-world Data:**

...

This paper proposes a novel 5G base stations energy consumption modelling method by learning from a real-world dataset used in the ITU 5G Base Station Energy Consumption Modelling ...

## 5G Base Stations: The Energy Consumption Challenge

Early deployments indicate that 5G base stations require 2.5-3.5 times more power compared to a 4G one. Moreover, C-band, i.e., 3.4 GHz to 4.2 GHz, is deemed as the most popular 5G ...



## **Machine Learning and Analytical Power Consumption Models for 5G Base**

The energy consumption of the fifth generation(5G) of mobile networks is one of the major concerns of the telecom industry. However, there is not currently an accurate and ...



### What is the Power Consumption of a 5G Base Station?

These 5G base stations consume about three times the power of the 4G stations. The main reason for this spike in power consumption is the addition of massive MIMO and ...



### Why does 5g base station consume so much power ...

Why does the base station consume electricity? The following presents the results of professional frontline testing, with the power ...

### **Comparison of Power Consumption Models for 5G Cellular Network Base**

In order to quantify and optimize the energy consumption of mobile networks, theoretical models are required to estimate the effect of relevant parameters on the total ...



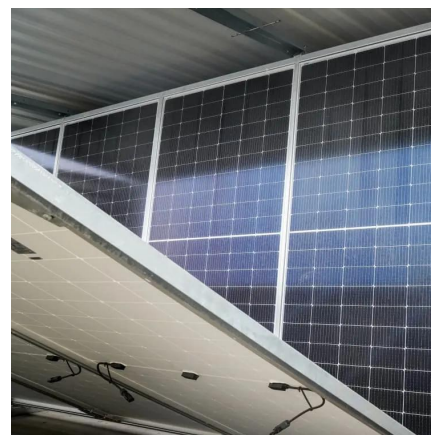


## Why does 5g base station consume so much power and how to ...

Why does the base station consume electricity? The following presents the results of professional frontline testing, with the power consumption of Huawei and ZTE 5G base ...

## Power consumption analysis of access network in 5G mobile ...

The architectural differences of these networks are highlighted and power consumption analytical models that characterize the energy consumption of radio resource ...



## 5G and Energy Efficiency

automation, health, etc. The main idea behind 5G is to minimize total network energy consumption, despite increased traffic and service expansion due to its use for these verticals ...

## Machine Learning and Analytical Power Consumption Models for 5G Base

In this article, we propose a novel model for a realistic characterization of the power consumption of 5G multi-carrier BSs, which builds on a large data collection campaign.





### Coordinated scheduling of 5G base station energy ...

AAU is the most energy-consuming equipment in 5G base stations, accounting for up to 90% of their total energy consumption. Auxiliary ...



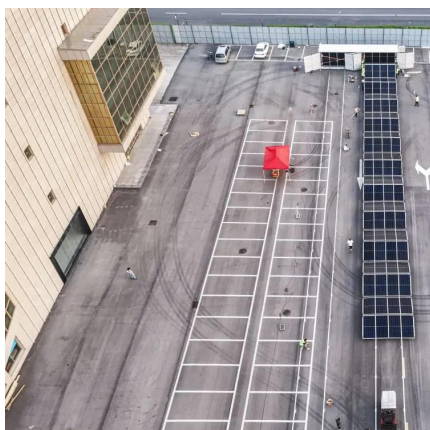
### **Machine Learning and Analytical Power Consumption Models for ...**

In this article, we propose a novel model for a realistic characterization of the power consumption of 5G multi-carrier BSs, which builds on a large data collection campaign.



### **A technical look at 5G energy consumption and performance**

To understand this, we need to look closer at the base station power consumption characteristics (Figure 3). The model shows that there is significant energy consumption in the ...





## Optimal configuration of 5G base station energy storage ...

The high-energy consumption and high construction density of 5G base stations have greatly increased the demand for backup energy storage batteries. To maximize overall ...



## The power supply design considerations for 5G base stations

An integrated architecture reduces power consumption, which MTN Consulting estimates currently is about 5% to 6 % of opex. This percentage will increase significantly with ...

## [ITU-AI-ML-in-5G-Challenge/5G-Energy-Consumption ...](#)

To reduce network energy consumption, it is crucial to optimize base station parameters and energy-saving methods. This requires a deep understanding ...



## Comparison of Power Consumption Models for 5G Cellular ...

This paper conducts a literature survey of relevant power consumption models for 5G cellular network base stations and provides a comparison of the models. It highlights commonly made ...



### Power Consumption Modeling of 5G Multi-Carrier Base ...

Importantly, this study item indicates that new 5G power consumption models are needed to accurately develop and optimize new energy saving solutions, while also considering the ...



## Contact Us

---

For catalog requests, pricing, or partnerships, please visit:  
<https://bringmethehorizon.eu>