



SolarMax Pro Energy Storage Systems

5g base station electricity bill





Overview

Today we see that a major part of energy consumption in mobile networks comes from the radio base station sites and that the consumption is stable. We can also see that even in densely deployed networks, as in city centers, the network traffic load can fluctuate very much during the day, with significant periods of.

The 5G NR standard has been designed based on the knowledge of the typical traffic activity in radio networks as well as the need to support sleep states in radio.

The first deployments of NR are mainly non-standalone(NSA) deployments. This means that existing LTE base stations will still be used, and NR will be added for.

We start by looking at the impact on user performance when introducing NR (Figure 6). We can notice that the LTE-only network is not sufficient to serve the.

Ericsson has made a significant contribution to the standardization of the New Radio's energy saving features. Parts of this process were documented in our.

Are 5G base stations causing more energy consumption?

However, Li says 5G base stations are carrying five times the traffic as when equipped with only 4G, pushing up power consumption. The carrier is seeking subsidies from the Chinese government to help with the increased energy usage.

How much power does a 5G base station consume?

That's almost a threefold increase compared to 4G (5). One 5G base station is estimated to consume about as much power as 73 households (6), and 3x as much as the previous generation of base stations (5), (7).

How much does a 5G base station cost?

[Click Here To Download It For Free!](#) Setting up a 5G base station is expensive,



with costs ranging from \$100,000 to \$200,000 per site. This price includes hardware, installation, site rental, and maintenance. Urban areas often have higher costs due to land prices and infrastructure challenges.

Does China Mobile have a 5G base station?

China Mobile has tried using lower cost deployments of MIMO antennas, specifically 32T32R and sometimes 8T8R rather than 64T64R, according to MTN. However, Li says 5G base stations are carrying five times the traffic as when equipped with only 4G, pushing up power consumption.

What is a 5G baseband unit?

The 5G baseband unit is responsible for NR baseband protocol processing, including the entire user plane (UP) and control plane (CP) protocol processing functions, and provides the backhaul interface (NG interface) with the core network and the interconnection interface between base stations (Xn interface).

How will 5G affect the energy consumption of mobile operators?

Edge compute facilities needed to support local processing and new internet of things (IoT) services will also add to overall network power usage. Exact estimates differ by source, but MTN says the industry consensus is that 5G will double to triple energy consumption for mobile operators, once networks scale.



5g base station electricity bill



Why does 5g base station consume so much power and how to ...

According to industry insiders' estimates, 100000 5G base stations require at least 2 billion yuan in electricity bills per year, so 8 million 5G base stations require at least 160 billion ...

What is the Power Consumption of a 5G Base Station?

These 5G base stations consume about three times the power of the 4G stations. The main reason for this spike in power consumption is the addition of massive MIMO and ...



5G means Batteries. A lot of them

Since an outdoor 5G base station consumes roughly three times more power than a similarly sized 4G installation, mobile network operators will draw on renewable generation to keep ...

5G NR Base Station Classes: Type 1-C, Type 1-H, ...

Learn about the different classes of 5G NR base stations (BS), including Type 1-C, Type 1-H, Type



1-O, and Type 2-O, and their specifications.



Renewable energy powered sustainable 5G network ...

Renewable energy is considered a viable and practical approach to power the small cell base station in an ultra-dense 5G network infrastructure to reduce the energy provisions ...

5G base stations use a lot more energy than 4G base stations: MTN

And this is expected to rise with the shift to 5G. A typical 5G base station consumes up to twice or more the power of a 4G base station, writes MTN Consulting Chief Analyst Matt ...



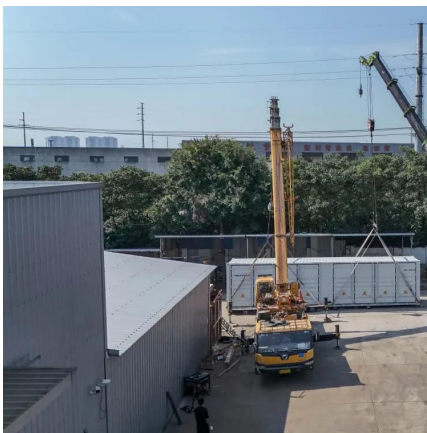
Carbon emissions and mitigation potentials of 5G base station in ...

Due to the high radio frequency and limited network coverage of 5G base stations, the number of the 5G base stations are 1.4~2 times than that of the 4G base stations, and ...



Is 5G a waste of electricity? Experts say it's complicated

A 5G base station consumes "four times more electricity" than its 4G counterpart, said Ding Haiyu, head of wireless and terminals at the China Mobile Research Institute, during a ...

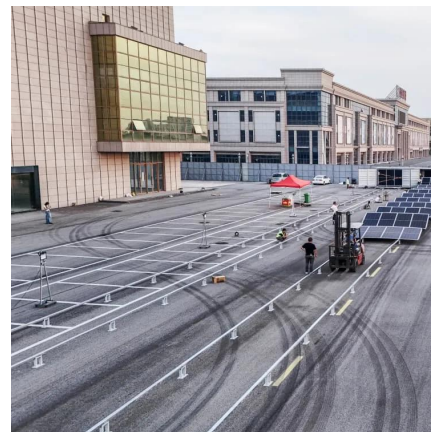


A technical look at 5G energy consumption and performance

To understand this, we need to look closer at the base station power consumption characteristics (Figure 3). The model shows that there is significant energy consumption in the ...

Why does 5g base station consume so much power ...

According to industry insiders' estimates, 100000 5G base stations require at least 2 billion yuan in electricity bills per year, so 8 million 5G base ...



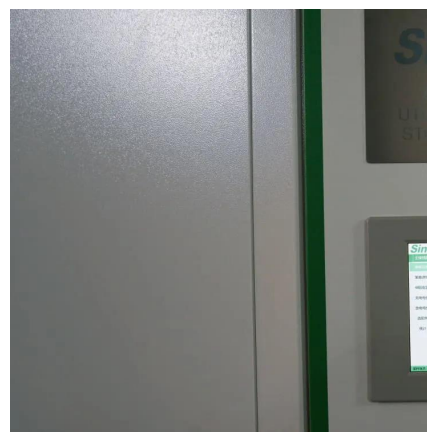
China's 5G construction turns to lithium-ion batteries ...

The Advanced Industry Research Institute (GGII) analysis believes that as the four major operators and China Tower start bidding for base station lithium ...



????????????5G????????? ...

???: 5G??, ??, ???, ?????, ??? Abstract: The electricity cost of 5G base stations has become a factor hindering the development of the 5G ...



Study on the Temporal and Spacial Characteristics of Electricity ...

The rapid development of the digital economy has led to a significant increase in the scale and electricity load of 5G base stations. 5G base stations, often equipped with batteries, can also ...

[Global 5G Base Station Industry Research Report](#)

Due to the substantial increase in power consumption of 5G base stations, electricity bills will bring tremendous pressure to the three major operators. In ...



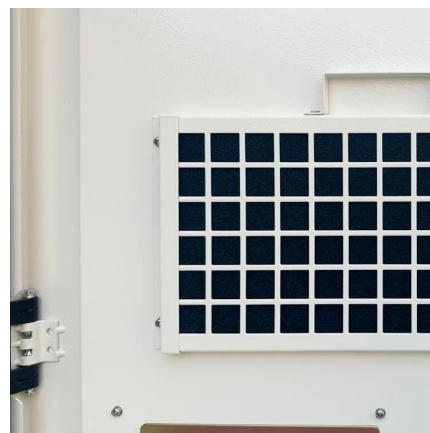


[Sustainable Connections: Exploring Energy Efficiency ...](#)

A portion of the dataset is published on GitHub. We develop high-accuracy models to profile 4G and 5G base station energy consumption, ...

[5G towers: everything you need to know about 5G cell ...](#)

Are 5G towers safe? Has Covid-19 stopped the roll-out of 5G? How do 5G cell towers operate? Here we demystify 5G's most controversial ...



[5G base stations use a lot more energy than 4G base ...](#)

And this is expected to rise with the shift to 5G. A typical 5G base station consumes up to twice or more the power of a 4G base station, writes ...

[5G Base Stations: The Energy Consumption Challenge](#)

Amongst these challenges, the most notable one is the energy consumption of a 5G base station due to the implementation of the massive MIMO technology and the level of network ...



Multi-objective interval planning for 5G base station ...

Large-scale deployment of 5G base stations has brought severe challenges to the economic operation of the distribution network, furthermore, ...



Modelling the 5G Energy Consumption using Real-world Data: Energy

This paper proposes a novel 5G base stations energy consumption modelling method by learning from a real-world dataset used in the ITU 5G Base Station Energy Consumption Modelling ...



5G Energy Consumption Prediction

This repository contains my project for the 5G Energy Consumption modeling challenge organized by the International Telecommunication Union (ITU) in 2023. The challenge aims to estimate ...





5G Base Station

The main energy consumption of 5G base stations is concentrated in the four parts of base station, transmission, power supply and computer room air conditioner, and the ...



5G Infrastructure Costs: What Telcos Are Paying , PatentPC

Setting up a 5G base station is expensive, with costs ranging from \$100,000 to \$200,000 per site. This price includes hardware, installation, site rental, and maintenance.

Energy Saving and Digital Management: 5G Telecom ...

Statistics show that the full load power consumption of a single 5G base station is about 3.5 to 4kW, with a daily power consumption of up to 65kWh. Such ...



How much power does 5G consume?

One 5G base station is estimated to consume about as much power as 73 households (6), and 3x as much as the previous generation of base stations (5), (7). When base stations, data centers ...



Energy Saving and Digital Management: 5G Telecom Tower Energy

Statistics show that the full load power consumption of a single 5G base station is about 3.5 to 4kW, with a daily power consumption of up to 65kWh. Such enormous energy consumption

...



Contact Us

For catalog requests, pricing, or partnerships, please visit:
<https://bringmethehorizon.eu>