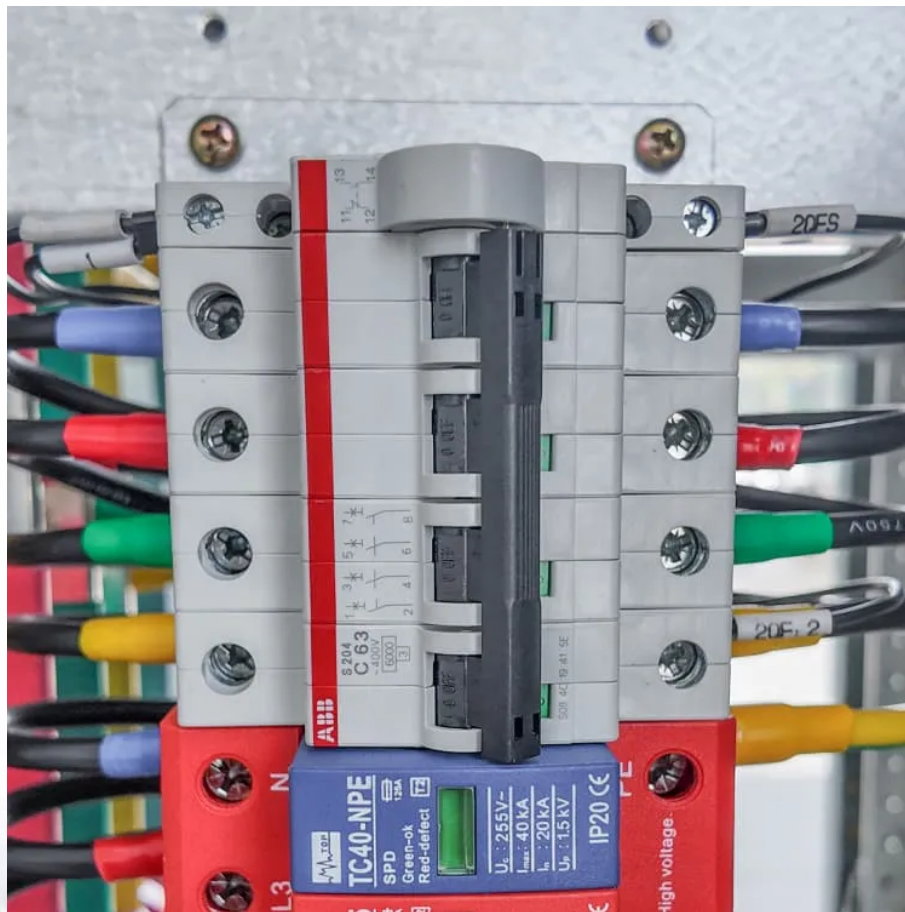




SolarMax Pro Energy Storage Systems

5G signal base station installed on the roof of the distribution room





Overview

What is a 5G base station?

Base Station Base Station (BS) is a key component of the 5G Radio Access Network (RAN) architecture that serves as an access point for wireless connections between user equipment (UE) and the network. It consists of a radio unit and an antenna system that transmits and receives signals to and from the UE.

Can a 5G base station be installed at ground level?

Many 5G base stations are being deployed at existing LTE sites. Each tower has a loading factor that defines the maximum weight of the radios and antennas that can be mounted. Due to legacy hardware on the tower, the radio may be required to be installed at ground level and only the antenna is tower mounted.

What is 5G Das & how does it work?

Fortunately, 5G DAS is designed to fix this issue by distributing 5G indoors to areas where the signal from outdoor 5G cell towers can't reach, ensuring indoor 5G coverage that is as good or even better than outdoors. What is 5G DAS?

.

What were the effects of a 5G base station?

After deployment of 5G base stations close to her living place she developed severe ill health including fatigue, dysesthesia, dizziness, balance disorder, and light sensitivity that all are included in the microwave syndrome. Also her 83 years old husband was affected, although to a minor extent.

Does a 5G base station have a RF test port?

Many 5G base stations do not have an RF test port. For this reason, over-the-



air (OTA) measurements must be made. Certain field spectrum analyzers offer a comprehensive suite of modulation quality measurements.

Should a 5G Das integrator install a distributed antenna system?

Distributed antenna systems are complex but the more 5G knowledge venue owners have, the better positioned they will be to partner with an experienced DAS integrator to successfully deploy a 5G DAS solution, whether that entails installing a new system or upgrading an existing DAS.



5G signal base station installed on the roof of the distribution room



5g network installation

Site Selection: Identify suitable locations for 5G base stations or small cells. These could be existing cell towers, buildings, utility poles, or new structures specifically erected for ...

Fusion application for 5G extended pico base station ...

This innovative solution relies on China Mobile's star "mass entrepreneurship and innovation" project - smart room distribution. For the ...



Location of 5G base station antenna in substation ...

Aiming at the engineering problem that 5G base station antenna is difficult to locate efficiently in complex electromagnetic environment, a two ...

Everything You Need To Know About DAS for In ...

Off-Air 5G Signal Source - An off-air 5G signal source uses a special antenna placed on a

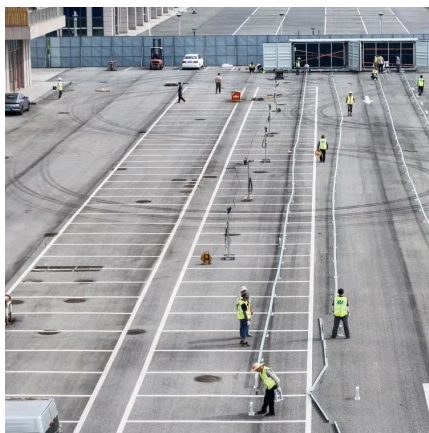


building's roof to capture signals from the nearest ...



Location of 5G base station antenna in substation taking into ...

Aiming at the engineering problem that 5G base station antenna is difficult to locate efficiently in complex electromagnetic environment, a two-stage positioning method of 5G base



The Role of Rooftop Infrastructure for 5G , American ...

With 5G antennas installed on several rooftops or building facades in an area, the signal of each antenna can go directly to each device, using it ...



A study on the ambient electromagnetic radiation level of 5G base

The results show that the factors that have significant impacts on the environmental radiation power density of 5G base stations including transmission distance, ...





[Guide to 5G Distributed Antenna Systems \(5G DAS\)](#)

A DAS consists of: A Signal Source A Distribution System The signal source - usually a base station, small cell, or repeater - has its signal ...

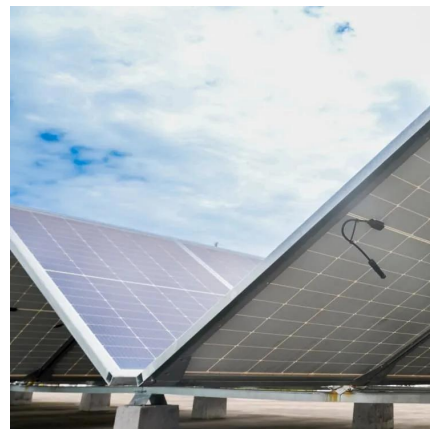


[Distributed Antenna Systems \(DAS\): The Definitive ...](#)

It's the most common signal source for DAS. On-Site Base Transceiver Station (BTS): Equipment that connects directly to the carrier's core network. ...

Quick guide: components for 5G base stations and antennas

Your 5G base-station design and 5G antenna components will need to address not only technical challenges, but also aesthetics, weather and security requirements.



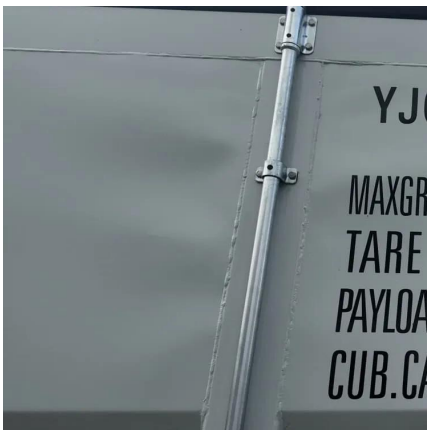
[5G DAS: Everything Building Owners Need to Know](#)

Fortunately, 5G DAS is designed to fix this issue by distributing 5G indoors to areas where the signal from outdoor 5G cell towers can't reach, ...



5G DAS: Everything Building Owners Need to Know

Fortunately, 5G DAS is designed to fix this issue by distributing 5G indoors to areas where the signal from outdoor 5G cell towers can't reach, ensuring indoor 5G coverage that is ...



Everything You Need To Know About DAS for In-Building 5G

Off-Air 5G Signal Source - An off-air 5G signal source uses a special antenna placed on a building's roof to capture signals from the nearest cell tower. However, this ...

Case Report: The Microwave Syndrome after Installation of ...

Abstract In this case, report two previously healthy persons, a man aged 63 years and a woman aged 62 years, developed symptoms of the microwave syndrome after installation of a 5G ...





Installation Criteria for a 5G Technology Cellular Base Station

PDF , On Jul 31, 2022, Wilmer Vergaray Mendez and others published Installation Criteria for a 5G Technology Cellular Base Station Modernization , Find, read and cite all the research you ...

Revealing 5G Cell Tower Health Impacts: 7 Scientific Case Studies

In this case report we present a woman aged 52 years who developed health problems consistent with the microwave syndrome after installation of a 5G base station facing ...



Base Station Transmits: 5G

It is important for field technicians to connect the base station to the antenna via a long RF cable to the tower or via short jumper cables from a rooftop mounted base station to ...

[Revealing 5G Cell Tower Health Impacts: 7 Scientific ...](#)

In this case report we present a woman aged 52 years who developed health problems consistent with the microwave syndrome after ...



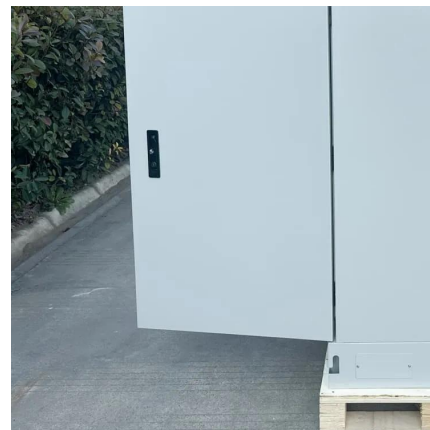
Improving 5 G base station placement through precise rooftop ...

By refining these detections, the placement of 5 G base stations is undertaken in a practical, industrial way, thus allowing network operators to perform a more real-world network ...



Intelligent Operation and Maintenance of Power ...

Based on 5G communication +5G edge computing, Hongdian provides intelligent operation and maintenance solutions for the power distribution room, uses ...



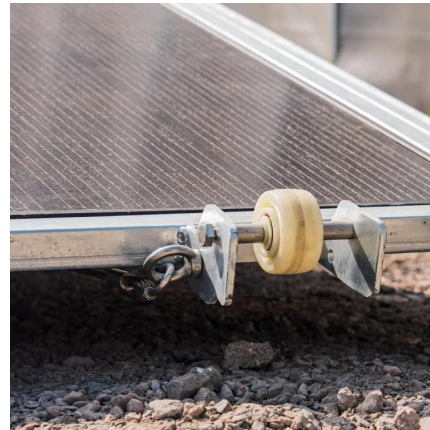
(PDF) Research on Distributed Work in the Context of ...

In this work, the Distributed Base Station (DBS) with Remote Radio Head (RRH) is considered as the envisioned architecture of the 5th ...



11410-02891A_5G NR_Base_Station_ AN-v3 dd

The result is that many 5G base stations do not provide an RF test port to facilitate traditional base station measurements. This has led away from direct measurements at a test port ...



Quick guide: components for 5G base stations and antennas

Base stations A 5G network base-station connects other wireless devices to a central hub. A look at 5G base-station architecture includes various equipment, such as a 5G ...

[5G RAN Architecture: Nodes And Components](#)

The UE communicates with the network infrastructure through the base station, which serves as the access point for wireless connections. In the context of 5G RAN, UE ...



[5G towers: everything you need to know about 5G cell ...](#)

Are 5G towers safe? Has Covid-19 stopped the roll-out of 5G? How do 5G cell towers operate? Here we demystify 5G's most controversial ...



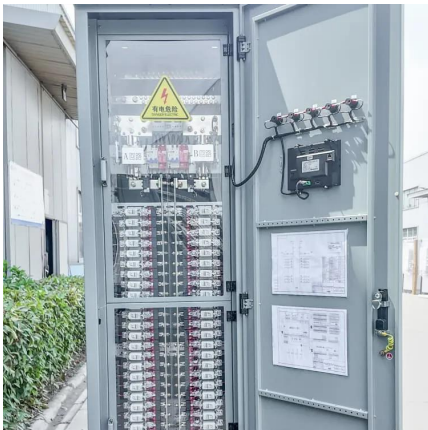
5g Base Station royalty-free images

Find 5g Base Station stock images in HD and millions of other royalty-free stock photos, illustrations and vectors in the Shutterstock collection. Thousands of ...



The Role of Rooftop Infrastructure for 5G , American Tower

With 5G antennas installed on several rooftops or building facades in an area, the signal of each antenna can go directly to each device, using it instead of traveling through ...



Contact Us

For catalog requests, pricing, or partnerships, please visit:
<https://bringmethehorizon.eu>