



**SolarMax Pro Energy Storage Systems**

## **540 specification photovoltaic panels**





## Overview

---

To give you an idea, a standard 540 watt solar panel is approximately 88 x 46 inches and tips the scales at around 72 pounds. Most modules with this output rating are monocrystalline and typically have at least 72 cells (144 half-cut cells). Which 540 watt solar panel is best?

The 540 watt solar panel is one of the best-rated solar panels, with high-quality 'A' grade solar cells and ultra-clear tempered glasses that are not easily broken. It can work effectively even in low light and cloudy conditions. Our 540-watt 24V solar PV module includes an IP 65 back side junction box.

What is a 540w half cut solar panel?

A 540W Half-Cut Solar Panel refers to a photovoltaic panel that has a power output of 540 watts and employs a "half-cut" cell design. In a half-cut design, the solar cells on the panel are divided into two halves, which are then wired in series.

How many cells are in a 540 watt solar panel?

To give you an idea, a standard 540 watt solar panel is approximately 88 x 46 inches and tips the scales at around 72 pounds. Most modules with this output rating are monocrystalline and typically have at least 72 cells (144 half-cut cells). Efficiencies vary widely from brand to brand, but most monocrystalline options fall into 18-22% range.

What is the warranty on 540 W solar panels?

Installing 540 W solar panels is simple enough, despite their larger size compared to standard panels. They typically come with a 25-year warranty, though some higher-end brands offer 30-year protection. Use our solar calculator to determine the optimal size for your installation.

Who makes 540wp 144 cells mono PERC DCR solar module?

TIER 1 Solar Module Manufacturer since last 20 Quarters. Only Module



Manufacturer to have TSEC approval. Shop.Waaree offers 540Wp 144 Cells Mono PERC DCR Solar Module at reasonable prices. Discover the Versatile and Lightweight Design of this Advanced Solar Panel.



## 540 specification photovoltaic panels

---



### Monocrystalline Solar Panel 540 WP

The 540 watt solar panel is one of the best-rated solar panels, with high-quality 'A' grade solar cells and ultra-clear tempered glasses that are not easily broken. It can work effectively even ...

### PV panels monocrystallines Silk® Plus 540-550 Wp , Futurasun

Silk® Plus is a series of monocrystalline PV modules with large area 182 mm 144 PERC half-cut cells with power up to 550 Wp. Silk® Plus reaches an high efficiency and is the latest solution ...



### 540W Bifacial Mono PERC Solar Panel

Take control of your energy costs with our high-efficiency 540W monocrystalline solar panel. With a rated voltage of 41.39V and a rated current of 13.05A, this panel is designed to deliver ...

### Data Sheet TP 540 HG10B (G-G) (new) (1)

Certified to withstand snow loads of up to 5400Pa. 6005-T6 grade. PID resistant module.



IP68 rated junction box. Warranties are subject to the terms and conditions as per the Tata Power ...

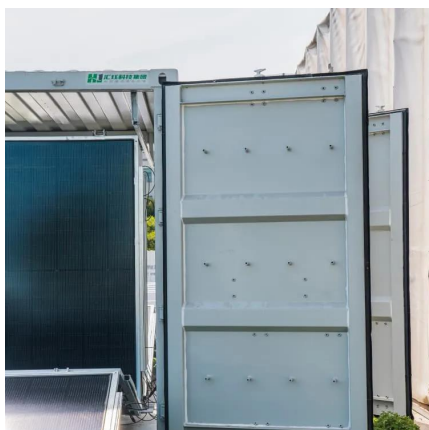


### 550W/24V Mono Perc Halfcut Solar Panel

For more details, visit the Warranty section under Specifications. Luminous offers a range of both Mono PERC halfcut solar panels and Polycrystalline PV modules. Our panels comply with IEC ...

### Rayzon Solar , L'lios Bifacial Modules 540WP (G2TB)

L'LIOS Bifacial 540 Wp Solar Panel Empower your energy systems with the L'LIOS 540 Wp Solar Panel, leveraging bifacial technology for enhanced energy absorption from both sides. Durable ...



### **540 Watt Solar panels for sale , Prices, dimensions, weight, ...**

540 Watt Solar panels' range of prices, dimensions, sizes, voltage output, specifications datasheets Ranges of information Voltage: 31.1V ~ 66V Amp: 8.19A ~ 17.36A





## 540W Bifacial Mono PERC Solar Panel

Take control of your energy costs with our high-efficiency 540W monocrystalline solar panel. With a rated voltage of 41.39V and a rated current of 13.05A, this ...



## PV panels monocrystallines Silk® Plus 540-550 Wp

Silk® Plus is a series of monocrystalline PV modules with large area 182 mm 144 PERC half-cut cells with power up to 550 Wp. Silk® Plus reaches an high ...

## Bluebird 540 Watt Half Cut Solar Panels

What is 540W Half Cut Solar Panels? A 540W Half-Cut Solar Panel refers to a photovoltaic panel that has a power output of 540 watts and employs a "half-cut" cell design. In a half-cut design, ...



## 540Wp / Mono: NBJD540

Solar Panel 540Wp / Mono: NBJD540 144 half-cell bifacial double glass solar panel designed for large free-field photovoltaic systems, optimized for long-term reliability and performance.



## Monocrystalline Solar Panel 540 WP

The 540 watt solar panel is one of the best-rated solar panels, with high-quality 'A' grade solar cells and ultra-clear tempered glasses that are not easily broken. ...



## [Datasheet Adani Solar India 520w 530w 535w 540w ...](#)

This document provides specifications for the ELAN SHINE Series Bifacial PV Modules. The modules have MBB cell technology and produce 520-545 watts ...

## [Renewsys 540 Watts Mono Perc Solar Panel](#)

The Renewsys Mono Perc 540 Watts Solar Panel is a high-performance solar panel designed for residential, commercial, and industrial applications. It features monocrystalline cells and a ...





### Mono PERC Solar Panel 540 Watt 24V Bi-Facial - ...

Mono Solar Panel 540 Watt 24V Bi-Facial has high performance with 27 years linear power warranty\*. It yields higher PV Energy even under low light & ...

### Jinko 540W Solar Panel (JKM540M-72HL4-TV) - TSolar

Jinko 540W Solar Panel Overview The Jinko 540W Solar Panel (Model: JKM540M-72HL4-TV) is a cutting-edge bifacial half-cell solar module ...



### **540 Watt Solar Panels**

Installing 540 W solar panels is simple enough, despite their larger size compared to standard panels. They typically come with a 25-year warranty, though some higher-end ...

## **Contact Us**

---

For catalog requests, pricing, or partnerships, please visit:  
<https://bringmethehorizon.eu>