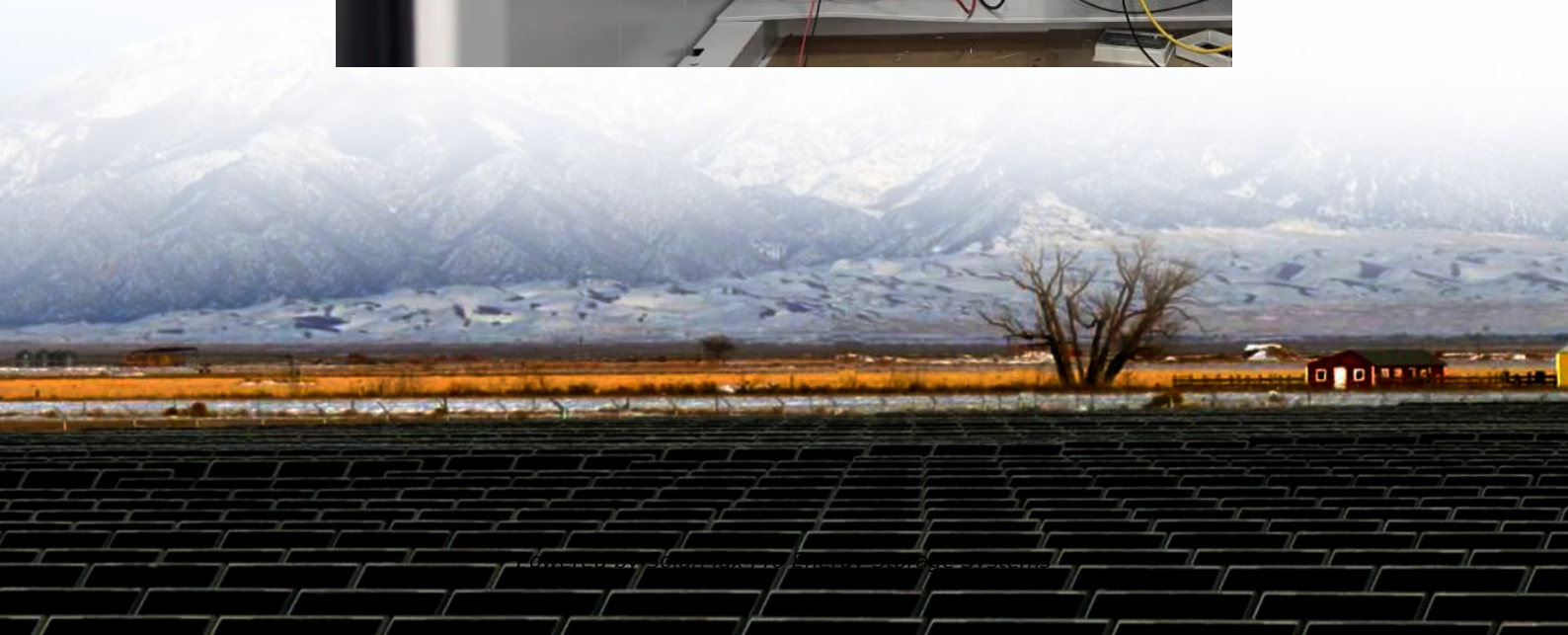
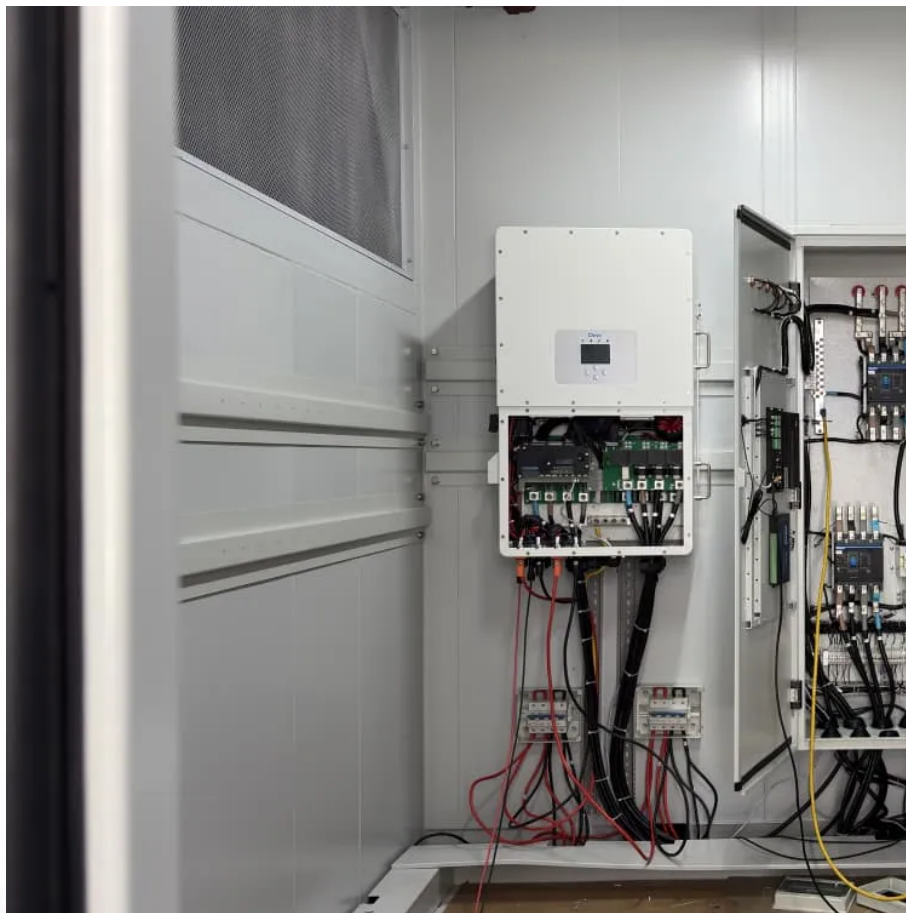




**SolarMax Pro Energy Storage Systems**

## **24v 500ah what size inverter should I use**





## Overview

---

Before we go any further, we highly recommend that you choose a pure sine wave inverter. This type of inverter delivers high-quality electricity, similar to your utility company.

We have summarized the appliances that inverters from 300W to 3000W can run depending on their rated maximum power. Note to our readers: Use the above formula to determine.

The rule of thumb is to size your inverter 1.25 bigger than your solar array. In some cases, you may need to use multiple inverters to meet your power needs or increase your system's voltage. This practice, known as inverter stacking, involves connecting multiple inverters in parallel or series. Do I need an inverter size chart?

The need for an inverter size chart first became apparent when researching our DIY solar generator build. Solar generators range in size from small generators for short camping trips to large off-grid power systems for a boat or house. Consequently, inverter sizes vary greatly.

How much battery do I need to run a 3000-watt inverter?

You would need around 24v 150Ah Lithium or 24v 300Ah Lead-acid Battery to run a 3000-watt inverter for 1 hour at its full capacity. Here's a battery size chart for any size inverter with 1 hour of load runtime. Note! The input voltage of the inverter should match the battery voltage.

How to calculate inverter size?

Using the Inverter Size Calculator is quick and easy. You'll need three inputs: Total Wattage (W): This is the total power consumption of all the appliances or devices you plan to run through the inverter. Safety Factor: A multiplier to ensure some buffer above your actual power requirement. Typically ranges from 1.1 to 1.5.

Does your solar inverter size match your battery bank voltage?

Your inverter's Size must match your battery bank voltage. Mismatched



voltages can cause failure or inefficient charging. Some inverters have built-in chargers with a max current limit. If your solar array can deliver 50A, but your inverter charger only accepts 30A, that limits charging efficiency—an argument for matching proper Size components.

How do I know if I need a solar inverter?

The simplest way to do this would be to look at your daily energy consumption. Most homes have an average daily consumption of between 9 to 20 kW. Depending on where they fall in that band and the size of their solar array, they will likely use a 3, 5, or 10kW inverter. You also need to consider surge watts and voltage drop.

How many Watts Does a 432 x 1.4 inverter use?

Now add up all the different wattages.  $150 + 7 + 75 + 150 + 50 = 432\text{W}$   $432 \times 1.4 = 604,8$  Result: To power the above appliances simultaneously, you'll need a minimum inverter size of 600 watts. Remember, the  $\times 1.4$  adds extra security if any of your appliances are inductive loads. Related Reading: [9 Best Off-grid Inverters \(Complete 2025 List\)](#)



## 24v 500ah what size inverter should I use

---

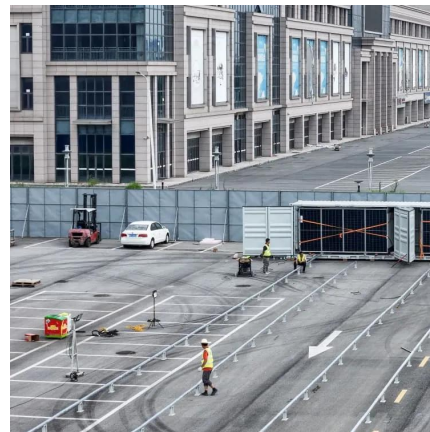


### Choosing the right DC breaker to stay in the limits of battery bank

I think this is the key to many problems! People will just flip the switch without removing loads. Take apart a typical square D type QO or QOU breaker and you can see the arc marks where ...

### [Sizing a battery DC circuit breaker : r/SolarDIY](#)

The inverter specifications say the maximum charge/discharge current is 50A and recommends 16-25mm<sup>2</sup> battery cables and a 200A DC circuit breaker. This seems high so I'm a bit confused.



### What Size Solar Inverter Do I Need? Experts Break It Down

Picking the right solar inverter isn't rocket science, but it's not a wild guess either. Match your inverter size to your solar panel output, leave a little headroom, and don't cheap ...

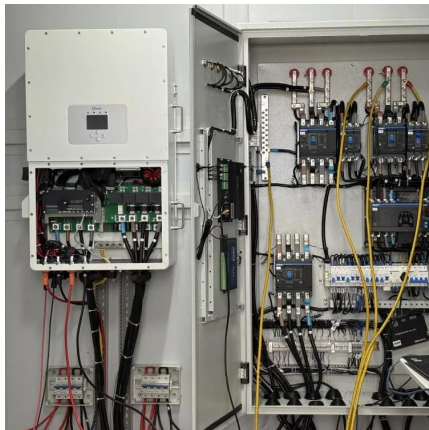
### [Determining the Solar and Inverter Size Needed to ...](#)

This guide will walk you through everything you need to know to calculate the optimal Size of





your solar and inverter setup to charge batteries  
...



### **How do I hook up the Inverter? What size cable should I use, and ...**

Additionally, some inverters require two or more cable sets and therefore may require a different cable size than listed. Cable size recommendations may vary among inverter brands and ...

### [Inverter Size Chat: What Size Inverter Do I Need?](#)

That's why I've put together a handy inverter size chart in order for you to quickly find out what size inverter is best for your needs. We'll start by going through the basic considerations, use ...



### [Inverter Size Chat: What Size Inverter Do I Need?](#)

That's why I've put together a handy inverter size chart in order for you to quickly find out what size inverter is best for your needs. We'll start by going through ...



## [How To Size A Solar Inverter in 3 Easy Steps](#)

Choose an inverter that has a surge watt rating equal to or greater than this value. As for voltage drop, check the wire length between your solar panels and the ...

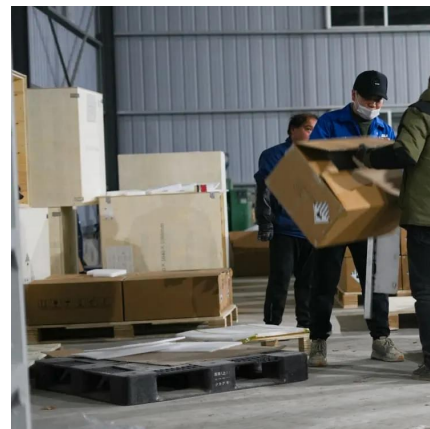


## **Inverter Size Calculator**

The Inverter Size Calculator is a powerful tool to help you select the right inverter based on your specific load requirements, efficiency level, and safety needs.

## **What Size Solar Inverter Do I Need? Experts Break It ...**

Picking the right solar inverter isn't rocket science, but it's not a wild guess either. Match your inverter size to your solar panel output, leave a little ...



## [What Size Inverter You Need \(Calculations + Battery\)](#)

Choosing an inverter can be tricky when working out all the various factors involved in this calculation. You want to be sure you have enough power to run all the different ...



## What Size Power Inverter Is Needed for a House [Full Guide]

In general, a 3000W to 5000W inverter works well for most homes, but the exact size depends on factors like household appliances, total power consumption, and battery ...



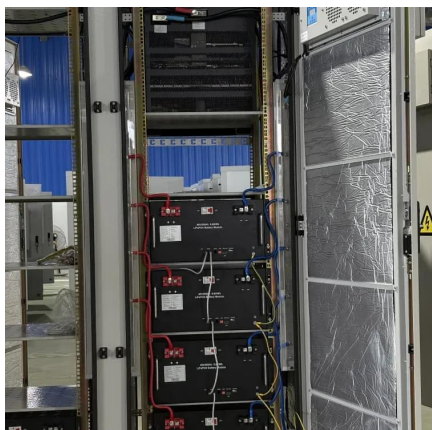
## Calculate Battery Size For Any Size Inverter (Using Our Calculator)

So I have made it easy for you, use the calculator below to calculate the battery size for 200 watt, 300 watt, 500 watt, 1000 watt, 2000 watt, 3000 watt, 5000-watt inverter

## How Many Batteries Do I Need To Run A 2000 Watt Inverter?

To power a 2000 watt inverter for 3 hours using a 12V system, you would need approximately 500Ah of battery capacity. In a 24V system, the same setup would only require ...





### **What size fuse should I attach to the positive terminals ...**

I am trying to determine what size fuse I should attach to the positive terminals of the batteries in my AGM battery bank. I am confused as to whether the ...

### **Inverter cable and breaker sizing**

Can anyone tell me what size wire I would use with a 250A breaker for this inverter? inverter specifications: Overload protection: 2,000 W - 2,100 W Reverse polarity protection: fuse Short ...



### **Wire gauge / fuse size help for connecting inverter (3000w) to**

I agree with rabbitaim. I'd use 2 gauge wire to connect them and an 150 amp fuse. The 2 gauge wire should handle any surges. I have a 24 volt system and ended up with the a 2 gauge wire ...

### [What Size Battery does a 3000W Inverter Use?](#)

To determine the required capacity, consider the average operating time of the inverter and multiply it by the power output. For example, ...





### wire sizing help for RV : r/SolarDIY

And from the 12v battery bank to a 1500/3000 (surge) inverter what size wire should would be needed? The distance between the bank and inverter would be around 5-7 feet as well.



### [What Size Power Inverter Is Needed for a House \[Full ...](#)

In general, a 3000W to 5000W inverter works well for most homes, but the exact size depends on factors like household appliances, total power ...



### Determining the Solar and Inverter Size Needed to Charge a Battery

This guide will walk you through everything you need to know to calculate the optimal Size of your solar and inverter setup to charge batteries effectively and safely.





### [Fuse size and location for a new battery/SolarDIY](#)

My understanding is you need a fuse for each leg. Panel to controller, controller to battery, battery to inverter. I think you'll need a 10a on the first leg, 20a on the second, and the size of the third ...



### [What Size Inverter You Need \(Calculations + Battery\)](#)

Choosing an inverter can be tricky when working out all the various factors involved in this calculation. You want to be sure you have enough ...

### [How To Size A Solar Inverter in 3 Easy Steps](#)

Choose an inverter that has a surge watt rating equal to or greater than this value. As for voltage drop, check the wire length between your solar panels and the batteries. If the wire length is ...



## Contact Us

---

For catalog requests, pricing, or partnerships, please visit:  
<https://bringmethehorizon.eu>