



SolarMax Pro Energy Storage Systems

12v water pump inverter can use 18v solar panel





Overview

The short answer to this question is Yes, you can charge a 12v battery with an 18v solar panel. But connecting a different volt solar panel directly to a 12v battery can damage the battery permanently. Can a solar panel power a water pump?

Also, there is chance your solar panel might create more than 12v power, in which your water pump will get damage in long run. To avoid this situation, you can simply connect DC buck converter between your solar panel and water pump which will help to supply only upto 12v power to your water pump.

Can a 12V pump run on a solar panel?

Buy a small, low power 12V pump. Connect it straight to the panel. It'll run most of the time when the sun is shining. It probably will work just fine like JRE says. But there could be a slight chance that the panel will over-volt the motor if the motor does not need the whole 10 Watts. @jigneshsorathiya that one won't work, it's for AC power.

How to choose a solar pump inverter?

Understand the rated power of the water pump. Normally, the rated power of the solar pump inverter should be slightly more than or equal to the rated power of the water pump to ensure that the pump can be operated normally. For instance, if the water pump's rated power is 2kW, the selected inverter should have a rated power of 2kW or higher.

Do I need a DC water pump if I have a solar panel?

A 12v 10w solar panel will create DC power. You need a DC water pump if you want to run it directly from your solar panel. Also, there is chance your solar panel might create more than 12v power, in which your water pump will get damage in long run.

Can a solar inverter drive a water pump?



Let's explore them. Three solar inverters can drive a water pump and convert photovoltaic direct current into alternating current. It is an inverter designed for running water pumps using solar power. It directly transforms the direct power produced by solar panels into an alternating current to drive the pump.

How do I connect a solar panel to a water pump?

To avoid this situation, you can simply connect DC buck converter between your solar panel and water pump which will help to supply only upto 12v power to your water pump. I'm doing a similar set up with a 50w 12v panel and 5w 12v pump.



12v water pump inverter can use 18v solar panel



A Step-by-Step Guide to Pairing Solar Panels with 12V Battery ...

Learn how to pair solar panels with 12V battery packs and LiFePO4 Battery in this step-by-step guide! Perfect for RV or off-grid use, with tips for efficiency. Visit HIMAX now!

How To Connect A Solar Panel To A Water Pump (Step By Step)

Can I connect a solar panel directly to a water pump? You could connect a solar panel directly to a water pump. It is not a good idea, though. The erratic pulse of electricity ...



Can a 18V Solar Panel Charge a 12V Battery: Best Practices for

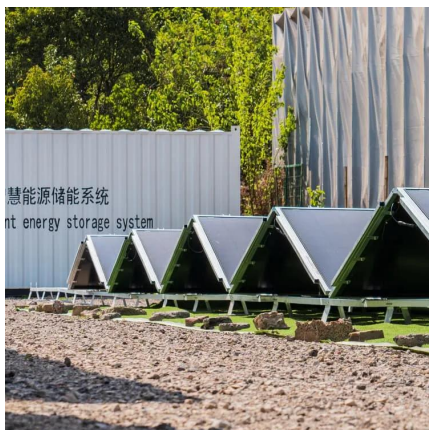
Curious if an 18V solar panel can charge a 12V battery? This article explores voltage interactions, optimal charging methods, and the essential role of charge controllers. ...

What Kind Of Solar Inverters Can Drive a Water Pump?

Head and Flow Determine the solar water pump's head and flow requirements. Giant heads and



larger flow water pumps usually require a higher-power solar inverter, which ...



[How do I convert my electric water pump to solar?](#)

The higher the HP of an electric water pump, you'll typically need more solar panels and a larger inverter. An inverter takes power from incoming DC voltage and turns the power into AC voltage.

Will a DC water pump work if directly connected to solar panels without

For example, most of DC water pumps can maintain work at 5 volts, for common pumps, they will start to work from 5 volts and then maybe stop because of voltage drop.



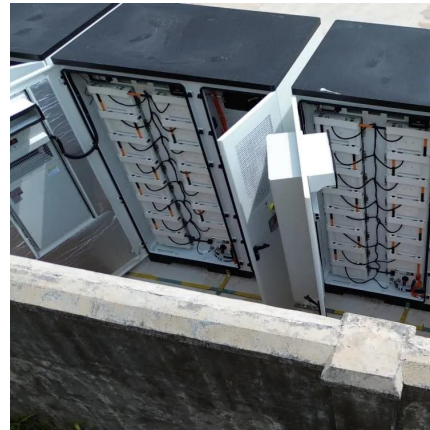
5+ Ways of Connecting Solar Panel to a Water Pump (For ...

To connect a solar panel to a water pump, you need to follow the necessary steps outlined in this guide. From determining power requirements to installing the solar panel ...



Off-Grid Solar Without Battery [Explained in Detail]

Pumping water for field irrigation Swimming pool pumps In both cases, the solar panels are connected to a controller. Depending on the type ...



Solar module directly attached to a DC water pump? : r/solar

Just 2 solar panels in series to get the voltage up above 24 volts and direct connected to the pump wires. It's a portable set up to provide garden hose amounts of water ...

can a 18v solar panel charge a 12v battery

Conclusion In conclusion, an 18V solar panel can indeed charge a 12V battery. However, it is crucial to use a charge controller to optimize charging performance and protect the battery ...



Solar module directly attached to a DC water pump? : r/solar

Just 2 solar panels in series to get the voltage up above 24 volts and direct connected to the pump wires. It's a portable set up to provide garden hose amounts of water at a distance from ...



[Buck-boost converter with solar panel?](#)

Here is an example of what could go wrong with using a generic DC-DC converter. Suppose your load running requires 12V @ 2A, a 24W load. You have a 100W panel with enough sun to ...



Solar Panel Size Calculator

Use our solar panel size calculator to find out the ideal solar panel size to charge your lead acid or lithium battery of any capacity and voltage. For example, 50ah, 100ah, ...

[What Kind Of Solar Inverters Can Drive a Water Pump?](#)

In short, selecting the right solar inverter for driving a water pump depends heavily on grid availability, location, and other application requirements. However, the best type is a ...





[How to Connect Solar Panels to Your Water Pump?](#)

Evaluate Sunlight Exposure: Ensure the location of your solar panels receives ample sunlight.
Decide on the Panel Capacity: Determine how ...

[on video Solar Panel Connection/Solar panel ...](#)

In this video, I talk about different ways to use solar panels directly without a battery. Whether you're curious about running an inverter without ...



[Can I Connect a Solar Panel Directly to a Water Pump?](#)

Yes, a water pump can run on solar power, provided that the system is correctly sized and configured. A solar water pump uses energy generated from ...

[Water feature system: determining power requirements](#)

One particular 12V DC pump recommends a solar panel of 18V/20W, and a minimum panel of 12V/8W. Would a single 100W/12V solar panel and 35WH battery be ...



18v panel to 12v inverter

No. You need a solar charge controller to connect the panel to the battery, otherwise, the panel would potentially over-charge the batteries (though their BMS should ...



Using a 18v solar panel on a 12v system

Is there any easy way to reduce the voltage to a safe level for use in my 12v rated inverter without having to open the front glass pane and rewiring the individual ...



Can I Connect a Solar Panel Directly to a Water Pump?

Yes, a water pump can run on solar power, provided that the system is correctly sized and configured. A solar water pump uses energy generated from photovoltaic (PV) solar panels to ...



[Using a 18v solar panel on a 12v system](#)

Is there any easy way to reduce the voltage to a safe level for use in my 12v rated inverter without having to open the front glass pane and rewiring the individual solar cells.

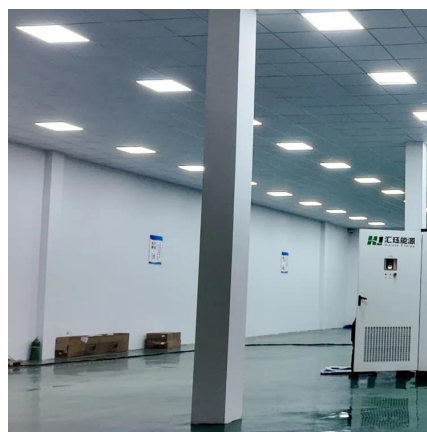


[5+ Ways of Connecting Solar Panel to a Water Pump ...](#)

To connect a solar panel to a water pump, you need to follow the necessary steps outlined in this guide. From determining power requirements ...

[How to run a small water pump using a solar panel?](#)

You need a DC water pump if you want to run it directly from your solar panel. Also, there is chance your solar panel might create more than 12v power, in which your water pump ...



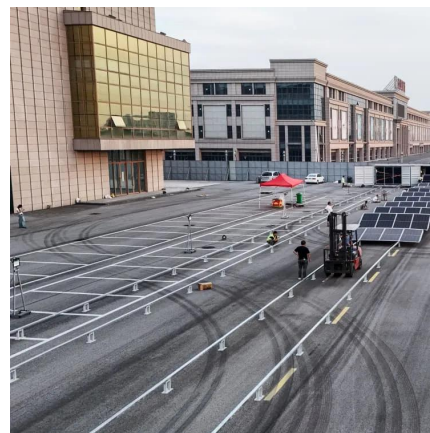
[Can I Use 18v Solar Panel To Charge 12v Battery?](#)

Can I connect a solar panel directly to a water pump? You could connect a solar panel directly to a water pump. It is not a good idea, though. ...



Marine Solar Water Pump 24V: Unboxing and Testing Using 200W Solar

The video shows how I testing (fixing / install) this Marine Solar Water Pump 24v-48v DC using 24v Solar Panel (200watt) and Power Supply AC 220v to 24v DC (



Contact Us

For catalog requests, pricing, or partnerships, please visit:
<https://bringmethehorizon.eu>