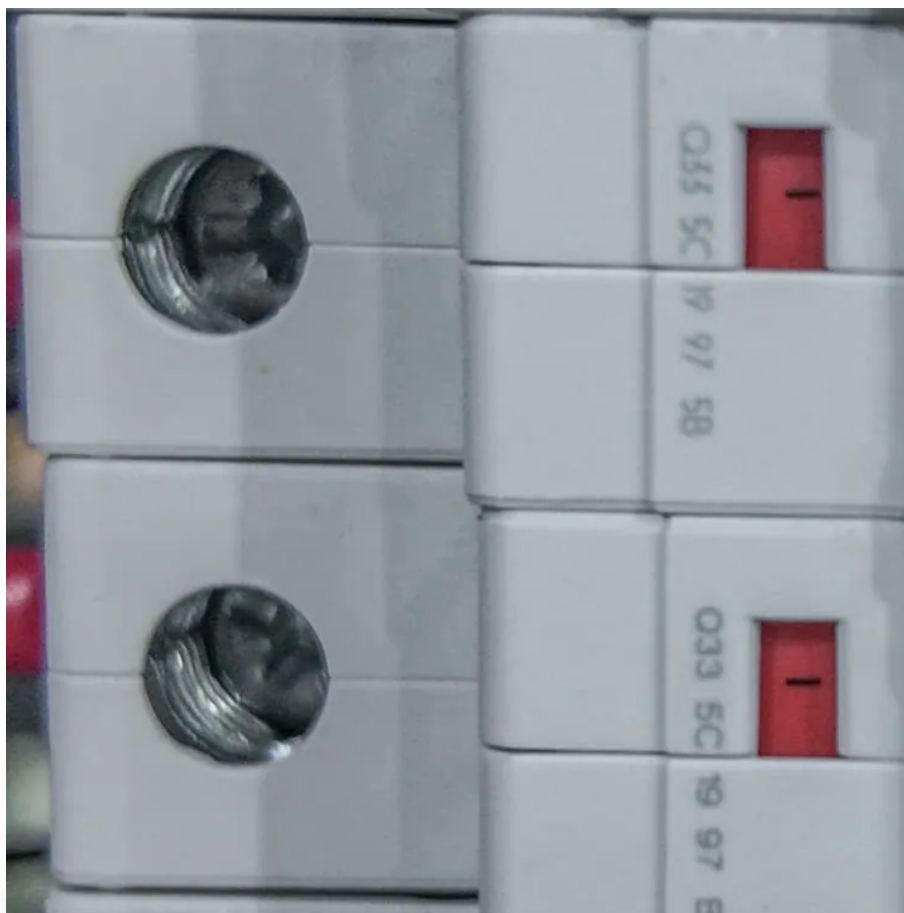




SolarMax Pro Energy Storage Systems

12v inverter connected to 72v battery





Overview

Can a 12V inverter be connected to a 24v battery?

Let's say you have a 12V inverter and try to connect two 12V batteries in series. You would end up inputting 24V to the inverter and cause an overload. This could cause damage to your equipment, at the very least your inverter will shut down to protect itself.

What voltage should a 12V inverter run on?

The input voltage of the inverter should match the battery voltage. (For example 12v battery for 12v inverter, 24v battery for 24v inverter and 48v battery for 48v inverter Summary What Will An Inverter Run & For How Long?

.

How many batteries can I connect to my inverter?

There is no set limit to how many batteries you can connect to your inverter. But you must understand how you connect your batteries together affects what you can and can't do! For example, connecting your batteries in series will be different to connecting in parallel.

Can you connect two 12V 100Ah batteries together?

If you connect together two 12V 100Ah batteries you end up with a 24V 100Ah capacity battery bank. You must be very careful doing this as an inverter will have a specific input voltage such as 12V or 24V. Let's say you have a 12V inverter and try to connect two 12V batteries in series.

Can a small power inverter be plugged into a 12 volt outlet?

Some small power inverters are equipped with DC power cords with plugs that can be plugged into a 12 volt vehicle outlet. Some have a cord set that have battery clips identified as Positive (Red color) and Negative (Black color). Some small inverters have two cords supplied; one with a plug and one with



battery clips. 12 Volt Outlets.

Should Inverter Batteries be wired in series?

If you decide to wire your inverter batteries in series it will increase the voltage and limit how many you can hook up to your inverter. Many people prefer to connect batteries and inverters in parallel. This is because there is less limitation on how many batteries you can connect to your inverter at once.



12v inverter connected to 72v battery

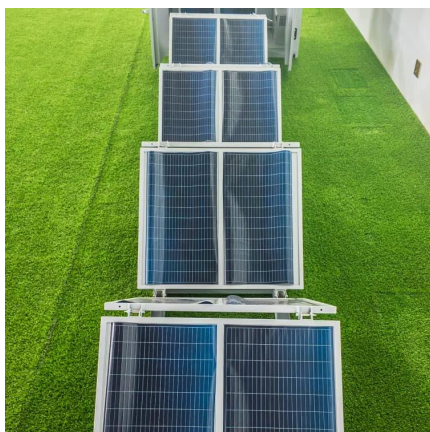


72v Charge controller?

I recently bought an old Miles Electric pickup truck that has a 72 volt battery and would like to only charge it primarily from the sun. I've been looking for some time, but i cannot ...

Building 72v battery from 3x 24v units?

You can build three 72v packs from 3v cells, and put those in parallel. If you build from 12v or 24v batteries, how will you keep the batteries balanced with each other?



Charging 72-volt lead-acid battery bank (6 x 12 V in series)

Greetings friends - I built a 72V battery bank using six 12V 7AH batteries connected in series. Naturally, I would like to keep them permanently...

How to Connect a Large or Small Inverter to a Battery

This blog answers questions about which inverters can be powered by 12V DC accessory



outlets (cigarette lighter sockets) and which require wiring directly to a battery.

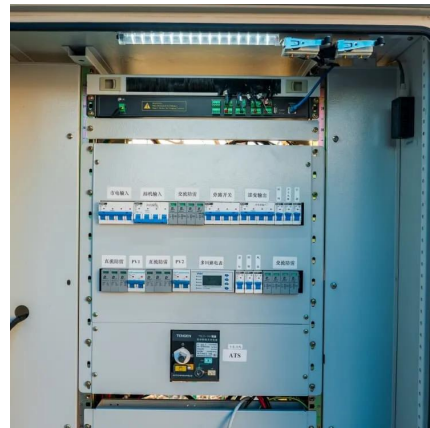


12V, 24V, or 48V Solar Power System: Which Voltage Is Best for ...

To do this, you need to connect an inverter to the battery bank. It is important to match the battery bank voltage with an inverter that can handle that same voltage. Simply put, if you have a 12V ...

eBike lithium batteries can hold an insane amount of ...

eBike lithium batteries can hold an insane amount of power. Has anyone thought about using them for emergency backup power? They should easily be able to ...



Battery connection for inverter

This article enlightens the features, risks and connectivity of inverter and the battery along with specific safety measures, its hazards and troubleshooting strategies.



12V to 72V inverter for battery charging , Electronics Forums

Scenario 12V,20A wind generator to charge a bank of 6x 12V batteries to run a 72V motor. What would happen if you ran a 12V to 110V sine or quasi-sine inverter, through a high ...



Sine Wave Grid Connected Inverter 1000W Battery Discharge ...

Buy Sine Wave Grid Connected Inverter 1000W Battery Discharge Auto-Limit MPPT DC24V 48V 72V 96V To 220 Grid Tie Inverter Limiter Sensor Solar Power Inverter,High Power at ...

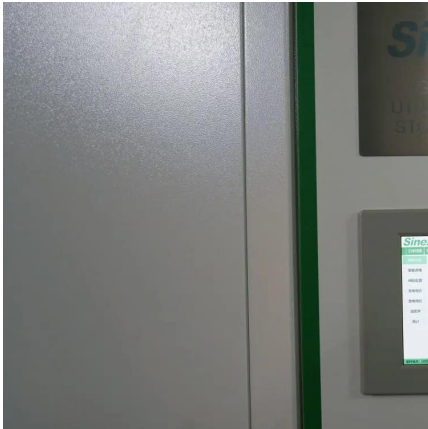
How to Safely Connect a Battery to an Inverter: A Step-by-Step ...

Learn how to safely connect your batteries to your inverter with our guide. Avoid common wiring mistakes to optimize performance and extend system life.



[Connecting Multiple Batteries to an Inverter: Easy Guide](#)

There is no set limit to how many batteries you can connect to your inverter. But you must understand how you connect your batteries together affects what you can and can't do! For ...



[How to Safely Connect a Battery to an Inverter: A ...](#)

Learn how to safely connect your batteries to your inverter with our guide. Avoid common wiring mistakes to optimize performance and extend ...



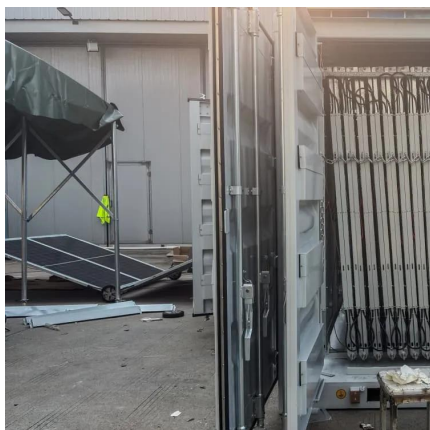
Amazon : 6000W DC 12V/24V/48V/60V/72V Pure Sine Wave Inverter

6000W DC 12V/24V/48V/60V/72V Pure Sine Wave Inverter Charger Split Phase DC Input AC Output 120V/240V Low Frequency Solar Power Inverter Converter,60v to 220v

Sine Wave Grid Connected Inverter 1000W Battery Discharge ...

Buy Sine Wave Grid Connected Inverter 1000W Battery Discharge Auto-Limit MPPT DC24V 48V 72V 96V To 220 Grid Tie Inverter Limiter Sensor Solar Power Inverter,Portable Design at ...



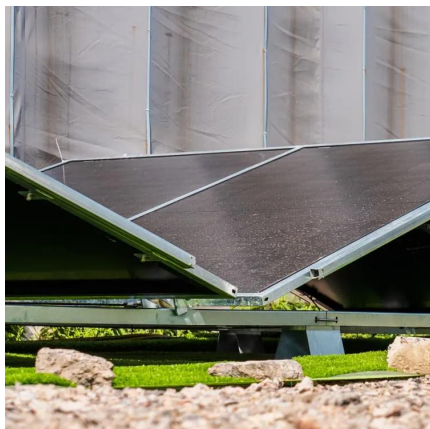


12V to 72V inverter for battery charging , Electronics Forums

Scenario 12V,20A wind generator to charge a bank of 6x 12V batteries to run a 72V motor. What would happen if you ran a 12V to 110V sine or quasi-sine

[How to Connect Solar Panels to Battery and Inverter](#)

Discover the step-by-step process of connecting solar panels to a battery and inverter. Harness solar energy efficiently for your power needs.



How to Connect a 72V Battery to a 12V Inverter A Technical Guide

Connecting a 72V battery to a 12V inverter isn't as simple as plug-and-play - it's like trying to fit a square peg into a round hole. Why? Because the voltage mismatch requires specialized ...

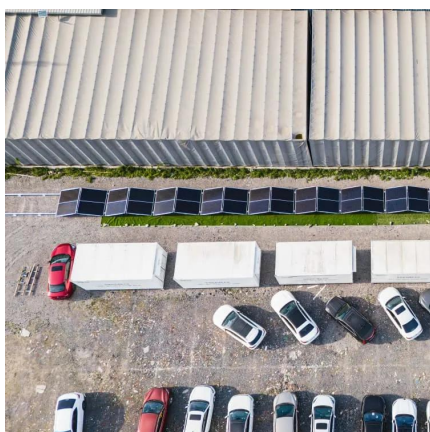
Calculate Battery Size For Any Size Inverter (Using Our Calculator)

To recharge your battery from time to time you would need the right size solar panel to do the job! Read the below article to find out the suitable solar panel size for your battery bank



[Calculate Battery Size For Any Size Inverter \(Using ...](#)

To recharge your battery from time to time you would need the right size solar panel to do the job! Read the below article to find out the suitable ...



[Connecting Multiple Batteries to an Inverter: Easy Guide](#)

There is no set limit to how many batteries you can connect to your inverter. But you must understand how you connect your batteries together affects what ...



[How to Connect a Large or Small Inverter to a Battery](#)

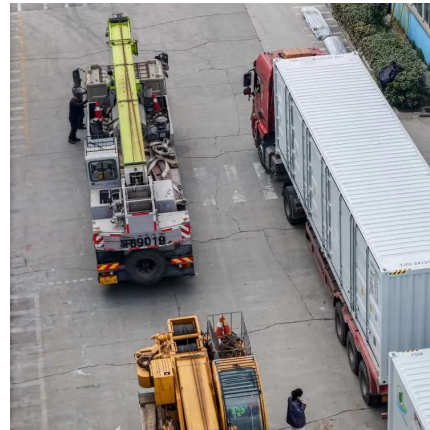
This blog answers questions about which inverters can be powered by 12V DC accessory outlets (cigarette lighter sockets) and which ...





How to Wire a Power Inverter to a Car Battery?

An inverter is a device that converts direct current (DC) from your batteries to alternating current (AC), allowing you to power your appliances, ...



500W MPPT Solar Grid Connected Inverter 12V 24V 36V 48V 60V 72V ...

500W MPPT Solar Grid Connected Inverter 12V 24V 36V 48V 60V 72V to AC 110V or 220V
Adjustable Battery Discharge Power Wholesale
consult the service of store . Product ...

Powering Up Safely: How to Wire Batteries in Series

So if you were to connect a 12v 50Ah battery in series with a 12v 100Ah battery, the result would be a 24v 50Ah battery. DO NOT CONNECT ...



Getting 12V 1A from 72V Battery?

You have six 12 volt batteries in series. To power your low voltage electronics, connect to the bottom 12 volt battery. There is no need to convert down from the maximum ...



Contact Us

For catalog requests, pricing, or partnerships, please visit:
<https://bringmethehorizon.eu>